



PARK VILLAGE EAST

EXISTING FRONT ELEVATION



EXISTING SIDE ELEVATION (NORTH)



EXISTING REAR ELEVATION



This original window opening has been repaired with replacement sashes fitted. The glazing bars are heavier in profile and do not align, the horns do not match the originals, obscure glass has been installed (including a bathroom extract fan). The windows in not in keeping with the original details.
Proposal to replace with new historic single glazed window to match original details.



Non-original opening (post 1955). Window sashes and glazing bars are heavier, no horns and generally not in keeping with historic details.
Proposal is to replace with new historic single glazed window to match original details.



Non-original opening (post 1955). Window sashes and glazing bars are heavier, no horns and generally not in keeping with historic details.
This window is removed and infilled as previous approved application 2011/1435/L



This original window has been repaired and partially replaced with non original sash fitted (circa 1955). The glazing bars no not align (see 4a detail photograph). The horns do not match on either side, and the window is generally in poor condition.
Proposal to replace with new historic single glazed window to match original details.



Original window has been repaired & partially replaced with non original sash. The window is generally in poor condition.
Proposal to replace with new single glazed window to match original details.



Original window has been repaired & partially replaced with non original sash and is generally in poor condition. Top sash has heavier glazing bar.
Proposal to replace with new single glazed window to match original details.



Non-original opening (post 1955). Window sashes and glazing bars are heavier, no horns, obscure glass has been installed (including a bathroom fan). Generally not in keeping with historic details.
Proposal is to replace with new single glazed window to match original details.



Non-original opening (post 1955).
This window is to be replaced with an arched door as previous approved application 2011/1435/L

9.



Non-original opening (post 1955). Window sashes and glazing bars are heavier and generally not in keeping with historic details. Propose to replace with new single glazed sash window to match historic details.

10.



Non-original window (post 1955). Most likely added when rear windows were fitted after 1955. No glazing bar, not in keeping with other windows. Proposal is to replace with new conservation double glazed sash window to traditional details.

11.



Non-original window (post 1955). Most likely added when rear elevation windows were fitted after 1955. No glazing bar, not in keeping with other windows. Proposal is to replace with new conservation double glazed sash window to traditional details.

12.



Non-original window (post 1955). Most likely added when rear windows were fitted after 1955. No glazing bar, not in keeping with other windows. Proposal is to replace with new conservation double glazed sash window to traditional details.

13.



Original window has been repaired and partially replaced over time. Both sashes have heavier glazing bars than the original windows. Proposal is to replace with new conservation double glazed sash window to traditional details.

14.



Original window has been repaired and partially replaced over time. Bottom sash has heavier glazing bar & thicker window frame than the original windows (see detail 14a). There is also a large gap between sashes (similar to detail 16a). Proposal is to replace with new conservation double glazed sash window to traditional details.

15.

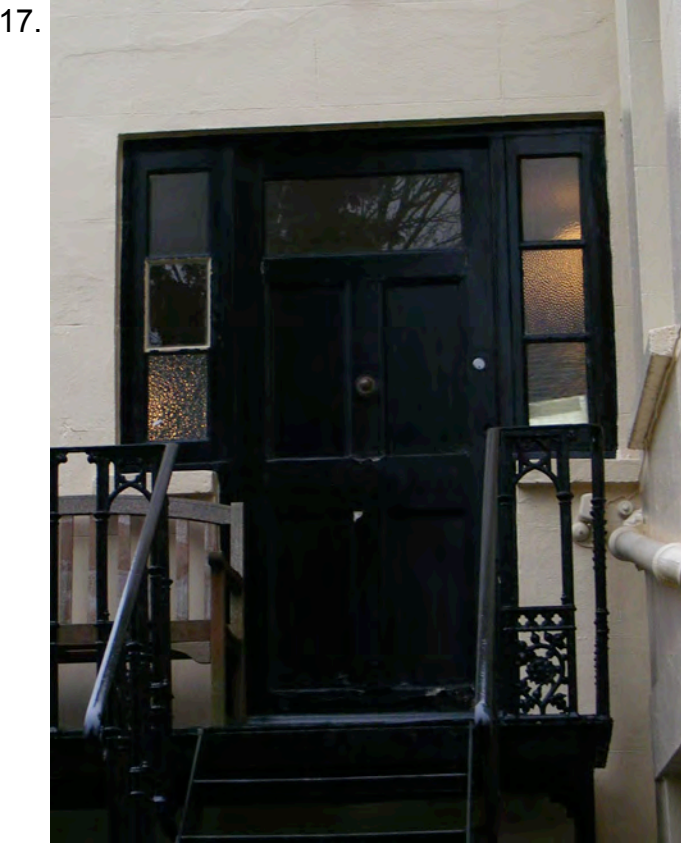


Original window has been repaired and partially replaced over time. In poor condition, glazing bars don't line up & there is also a large gap between sashes. Proposal is to replace with new conservation double glazed sash window to traditional details.

16.



Original window has been repaired and partially replaced over time. In poor condition & there is a large gap between sashes (see detail 16a). Proposal is to replace with new conservation double glazed sash window to traditional details.



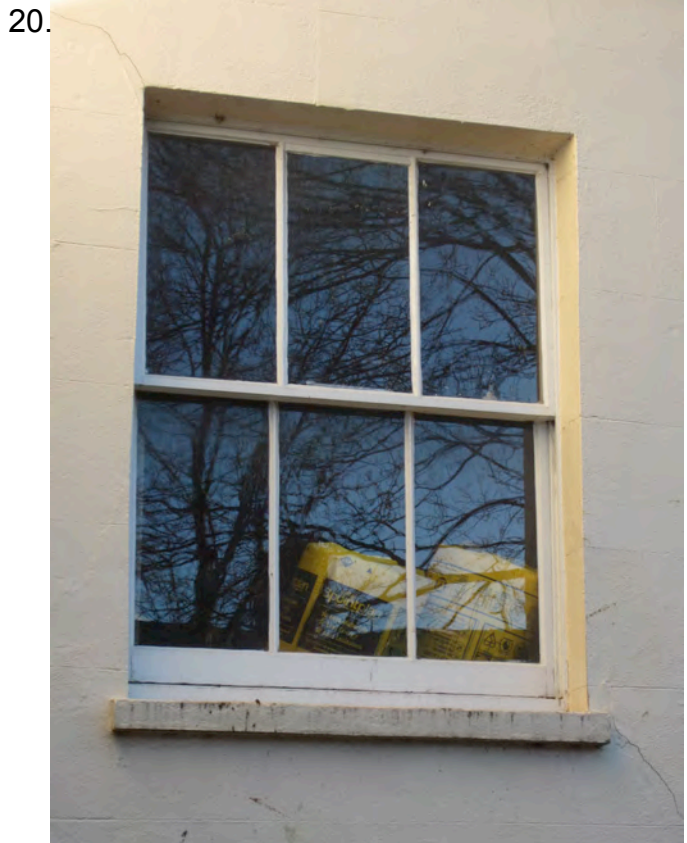
Existing door & side lights to be removed to be replaced by new sash window as per previous approved application 2011/1435/L. Proposal to replace with new conservation double glazed sash window to match all rear windows.



Non-original rear window (added post 1955). No glazing bar, not in keeping with other windows. This window is to be replaced with new glazed doors as per previous approved application 2011/1435/L.



Non-original rear window (added post 1955). No glazing bar, not in keeping with other windows. New wider window to be added as per previous approved application 2011/1435/L. Proposal to replace with new conservation double glazed sash window to traditional details.



Non-original rear window (added post 1955). Proposal is to replace with new conservation double glazed sash window to traditional details.



Internal detail of window 4. Note the glazing bars do not align. The bottom sash is original but in a poor state of repair this has an 18mm glazing bar, the upper sash is a replacement with heavier glazing bar at 23mm.



Internal detail of window 5 shows the window in a poor state of repair, with different glazing bar profiles for the top & bottom sashes again.



Internal detail of window 14 shows the window in a poor state of repair & different glazing bar details for the top & bottom sashes. Also the more recently installed bottom sash is deeper than the top sash.



Internal detail of window 16 shows the window in a poor state of repair & the large gap between the two poorly constructed sashes.