

PROPOSED FRONT ELEVATION

NOTE: WINDOWS TYPES AS INDICATED;
A - SINGLE GLAZED,
B - DOUBLE GLAZED.
REFER TO DRAWING NOS: 3139_TP.3005
& 3139_TP.3006 FOR DETAILS



FRONT ELEVATION
(East Facing)

PARK VILLAGE EAST

<div>GENERAL NOTES:</div> <div>Do not scale from this drawing.</div> <div>Check drawing on receipt and immediately report any discrepancies to the Architect.</div> <div>Verify all dimensions and levels on site prior to construction.</div> <div>The contents of this drawing are Stiff + Trevillion Architects LLP copyright and shall not be re-used without their written permission.</div>	No.	Date	Revision Notes	<div>PLANNING</div> <div>Stiff + Trevillion</div> <div>Stiff + Trevillion Architects LLP 16 Woodfield Road London W9 2BE</div> <div>T +44(0)20 8960 5550 F +44(0)20 8969 8668 mail@stiffandtrevillion.com www.stiffandtrevillion.com</div>	<div>Project</div> <div>36 PARK VILLAGE EAST LONDON NW1 1PZ</div>		
	<div>Drawing</div> <div>FRONT ELEVATION (East) AS PROPOSED</div>						
	Project No	Drawing No	Revision				
	3139	TP.2001	-				
	Scale	1:50 @ A1 1:100 @ A3	Date		NOV/2012	Revised	-

PROPOSED REAR ELEVATION

NOTE: ALL WINDOWS TYPE B UNLESS SPECIFIED.
A - SINGLE GLAZED,
B - DOUBLE GLAZED.
REFER TO DRAWING NOS: 3139_TP.3005
& 3139_TP.3006 FOR DETAILS



REAR ELEVATION
(West Facing)
PARK VILLAGE EAST

<div>GENERAL NOTES:</div> <div>Do not scale from this drawing.</div> <div>Check drawing on receipt and immediately report any discrepancies to the Architect.</div> <div>Verify all dimensions and levels on site prior to construction.</div> <div>The contents of this drawing are Stiff + Trevillion Architects LLP copyright and shall not be re-used without their written permission.</div>	No. Date Revision Notes		PLANNING	<div>Stiff + Trevillion</div> <div>Stiff + Trevillion Architects LLP 16 Woodfield Road London W9 2BE</div> <div>T +44(0)20 8960 5550 F +44(0)20 8969 8668 mail@stiffandtrevillion.com www.stiffandtrevillion.com</div>	Project 36 PARK VILLAGE EAST LONDON NW1 1PZ				
	Drawing REAR ELEVATION (West) AS PROPOSED				Drawing No TP.2002				
	Project No 3139				Revision -				
	Scale 1:50 @ A1 1:100 @ A3				Date NOV/2012 Revised -				

PROPOSED SIDE ELEVATION

NOTE: ALL WINDOWS TYPE B UNLESS SPECIFIED
A - SINGLE GLAZED,
B - DOUBLE GLAZED.
REFER TO DRAWING NOS: 3139_TP.3005
& 3139_TP.3006 FOR DETAILS



SIDE ELEVATION
(North Facing)

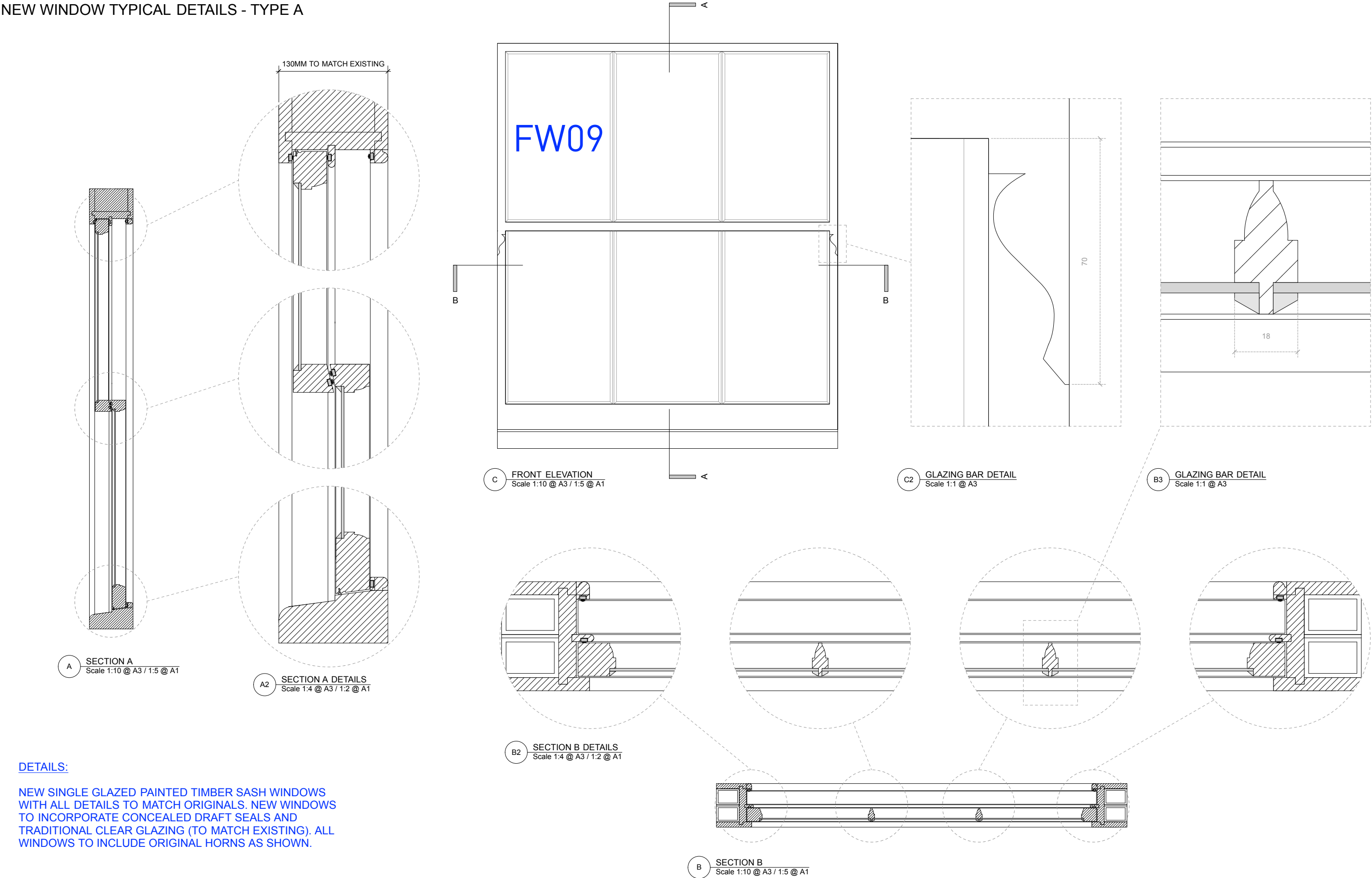
PARK VILLAGE EAST

<div>GENERAL NOTES:</div> <div>Do not scale from this drawing.</div> <div>Check drawing on receipt and immediately report any discrepancies to the Architect.</div> <div>Verify all dimensions and levels on site prior to construction.</div> <div>The contents of this drawing are Stiff + Trevillion Architects LLP copyright and shall not be re-used without their written permission.</div>	No. Date Revision Notes		<div>PLANNING</div> <div>Stiff + Trevillion</div> <div>Stiff + Trevillion Architects LLP 16 Woodfield Road London W9 2BE</div> <div>T +44(0)20 8960 5550 F +44(0)20 8969 8668 mail@stiffandtrevillion.com www.stiffandtrevillion.com</div>	Project 36 PARK VILLAGE EAST LONDON NW1 1PZ		
	Drawing SIDE ELEVATION (North) AS PROPOSED					
	Project No	Drawing No		Revision		
	3139	TP.2003		-		
	Scale	1:50 @ A1 1:100 @ A3		Date NOV/2012		
				Revised -		

NEW WINDOW TYPICAL DETAILS - TYPE A

DETAILS:

NEW SINGLE GLAZED PAINTED TIMBER SASH WINDOWS
WITH ALL DETAILS TO MATCH ORIGINALS. NEW WINDOWS
TO INCORPORATE CONCEALED DRAFT SEALS AND
TRADITIONAL CLEAR GLAZING (TO MATCH EXISTING). ALL
WINDOWS TO INCLUDE ORIGINAL HORNS AS SHOWN.



GENERAL NOTES:
Do not scale from this drawing.
Check drawing on receipt and immediately
report any discrepancies to the Architect.
Verify all dimensions and levels
on site prior to construction.
The contents of this drawing are
Stiff + Trevillion Architects LLP copyright
and shall not be re-used without their written permission.

No. Date Revision Notes

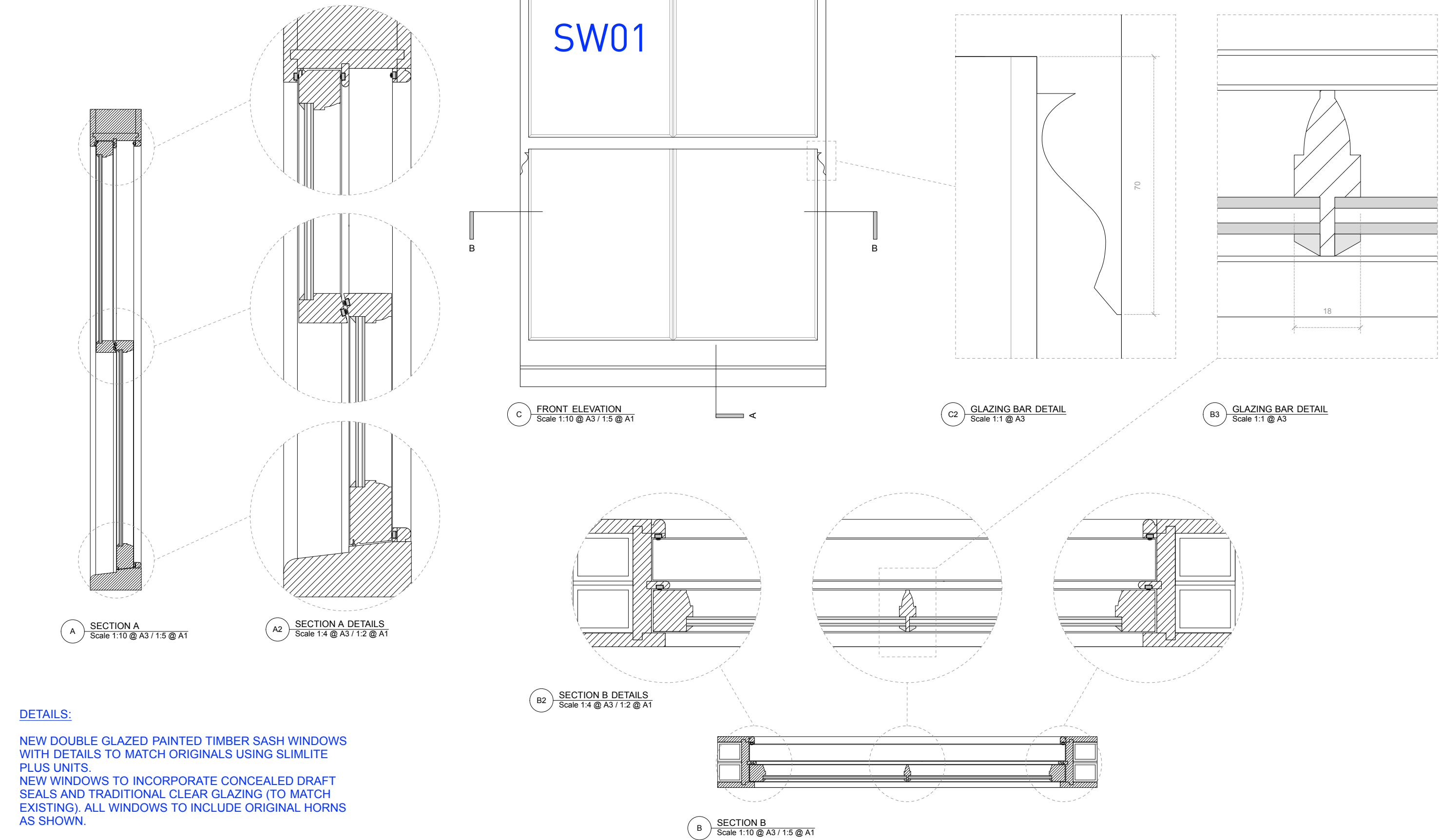
PLANNING

Stiff + Trevillion

Stiff + Trevillion Architects LLP
16 Woodfield Road
London W9 2BE
T +44(0)20 8960 5550
F +44(0)20 8969 8668
mail@stiffandtrevillion.com
www.stiffandtrevillion.com

Project	36 PARK VILLAGE EAST LONDON NW1 1PZ		
Drawing	WINDOW DETAILS - TYPE A AS PROPOSED		
Project No	3139	Drawing No	TP.3005
Scale	1:5/2 @ A1 1:10/4/1 @ A3	Date	NOV/2012
Revised	-	Revised	-

NEW WINDOW TYPICAL DETAILS - TYPE B

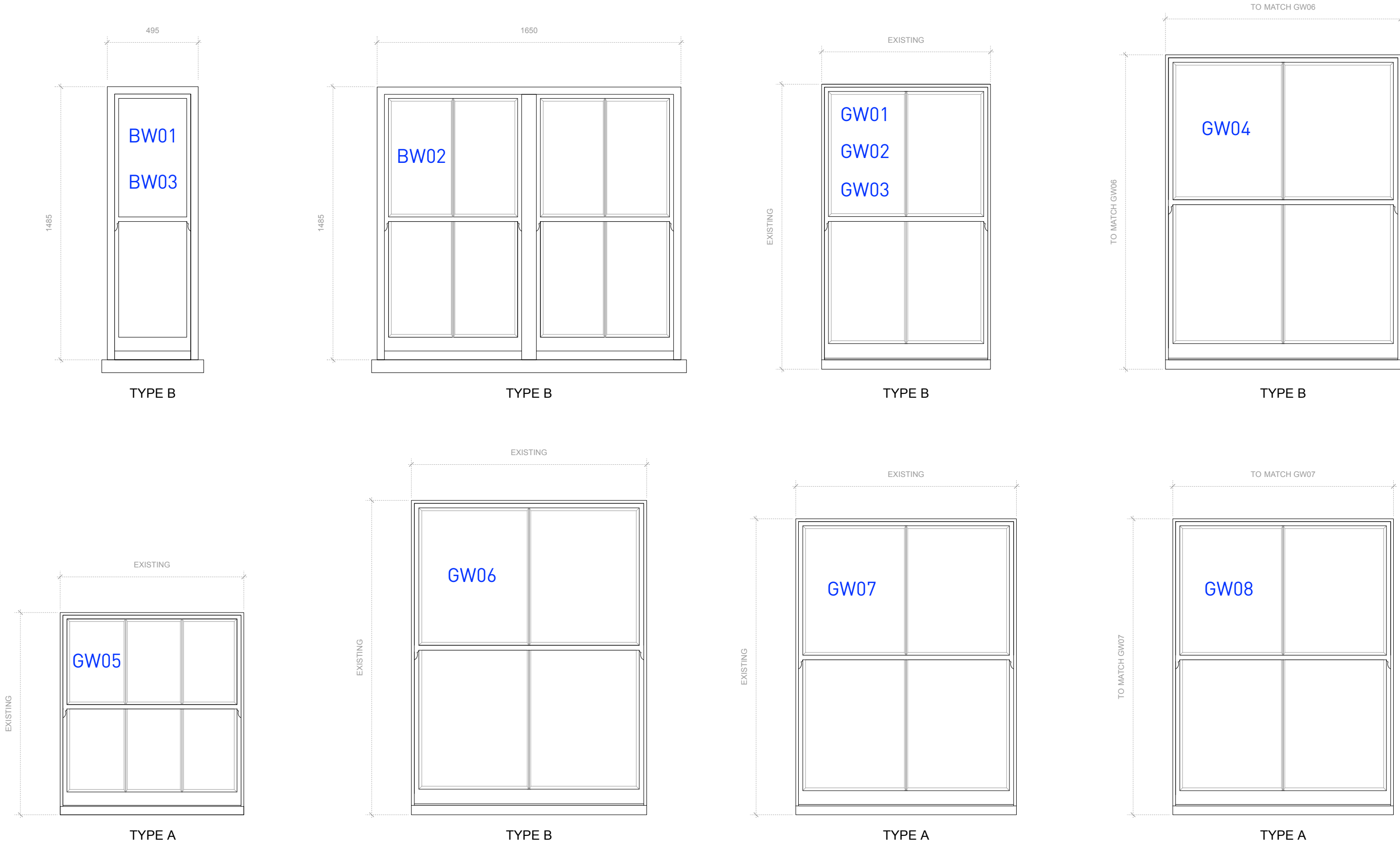


DETAILS:

NEW DOUBLE GLAZED PAINTED TIMBER SASH WINDOWS WITH DETAILS TO MATCH ORIGINALS USING SLIMLITE PLUS UNITS. NEW WINDOWS TO INCORPORATE CONCEALED DRAFT SEALS AND TRADITIONAL CLEAR GLAZING (TO MATCH EXISTING). ALL WINDOWS TO INCLUDE ORIGINAL HORNS AS SHOWN.

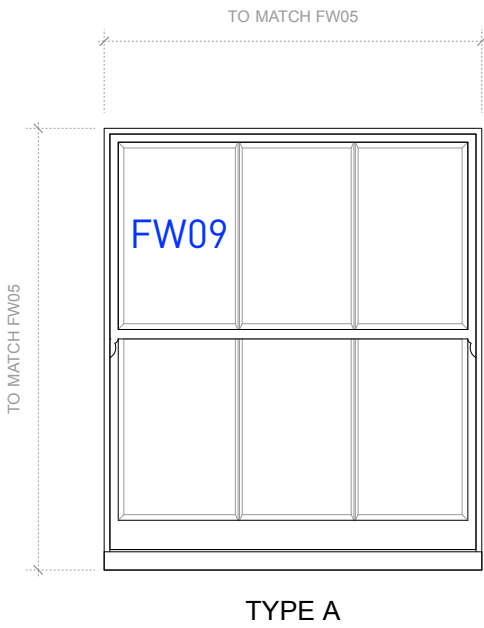
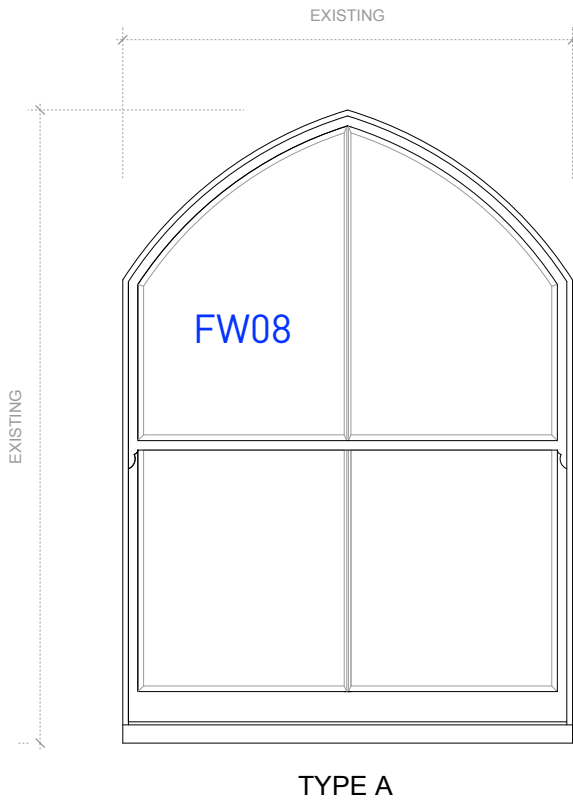
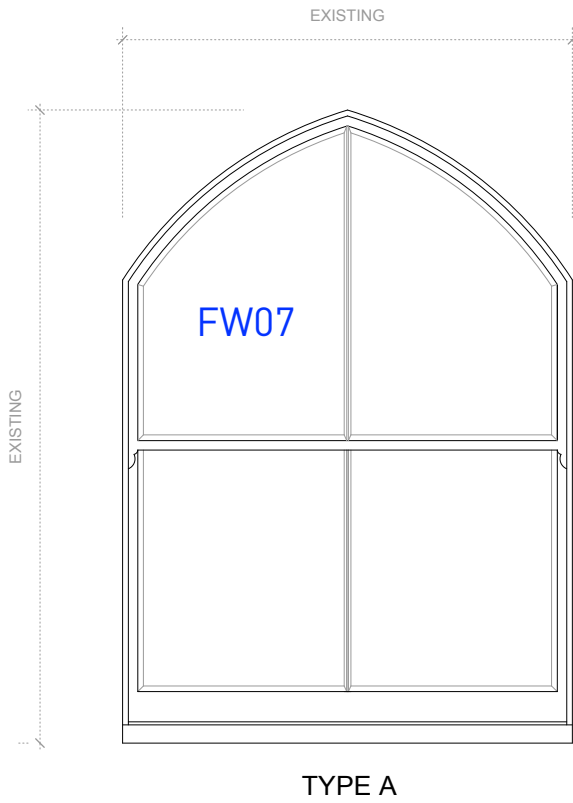
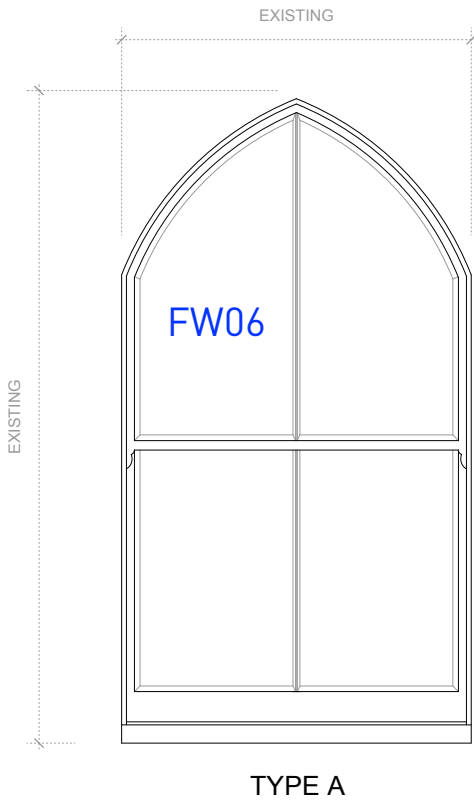
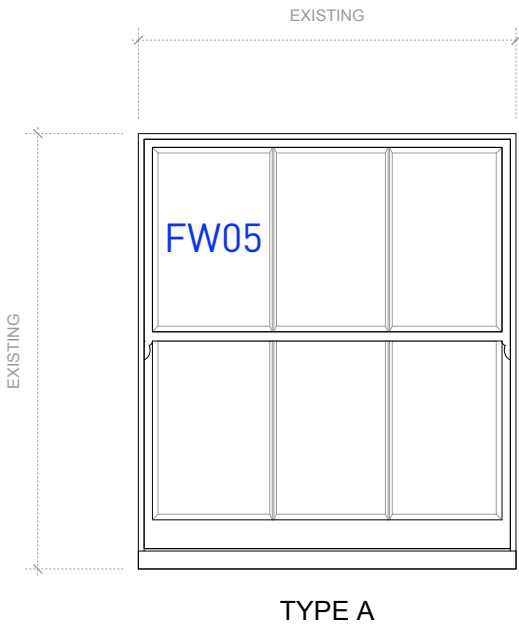
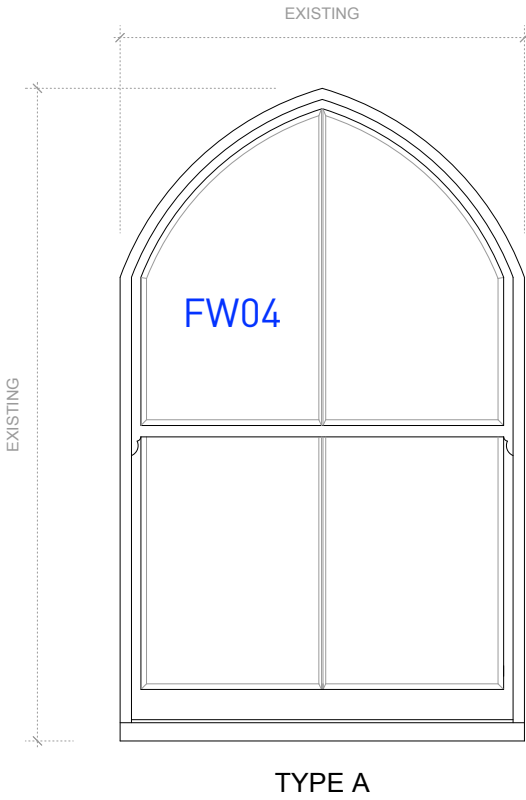
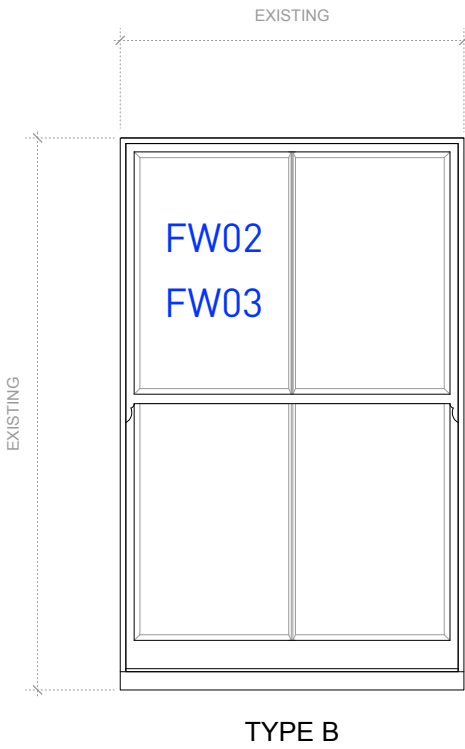
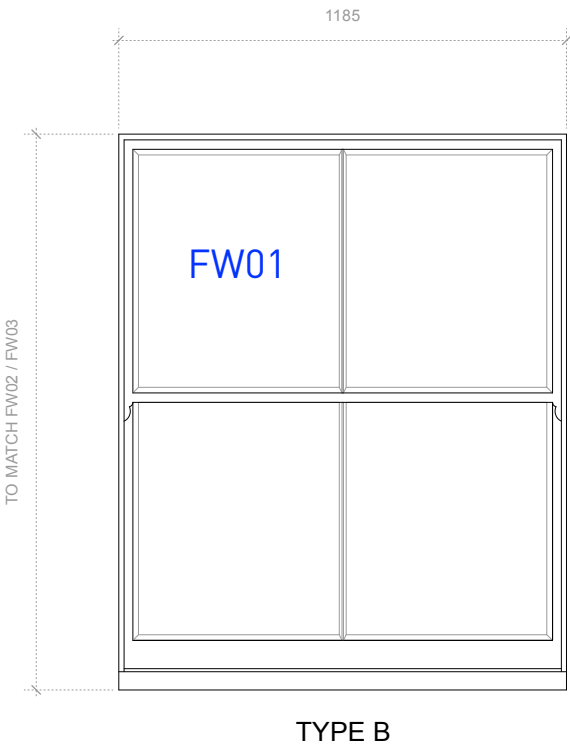
<div>GENERAL NOTES:</div> <div>Do not scale from this drawing.</div> <div>Check drawing on receipt and immediately report any discrepancies to the Architect.</div> <div>Verify all dimensions and levels on site prior to construction.</div> <div>The contents of this drawing are Stiff + Trevillion Architects LLP copyright and shall not be re-used without their written permission.</div>	No. Date Revision Notes		PLANNING	<div>Stiff + Trevillion</div> <div>Stiff + Trevillion Architects LLP 16 Woodfield Road London W9 2BE</div> <div>T +44(0)20 8960 5550 F +44(0)20 8969 8668 mail@stiffandtrevillion.com www.stiffandtrevillion.com</div>	Project 36 PARK VILLAGE EAST LONDON NW1 1PZ				
	Drawing WINDOW DETAILS - TYPE B AS PROPOSED				Drawing No TP.3006				
	Project No 3139				Revision -				
	Scale 1/5/2 @ A1 1:10/4/1 @ A3				Date NOV/2012				
					Revised -				

PROPOSED WINDOW SCHEDULE 1



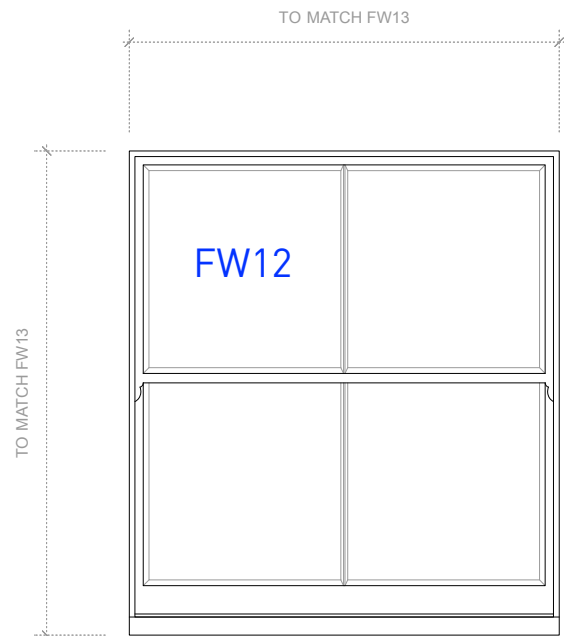
<div>GENERAL NOTES:</div> <div>Do not scale from this drawing.</div> <div>Check drawing on receipt and immediately report any discrepancies to the Architect.</div> <div>Verify all dimensions and levels on site prior to construction.</div> <div>The contents of this drawing are Stiff + Trevillion Architects LLP copyright and shall not be re-used without their written permission.</div>	No. Date Revision Notes		<div>PLANNING</div> <div>Stiff + Trevillion</div> <div>Stiff + Trevillion Architects LLP</div> <div>16 Woodfield Road</div> <div>London W9 2BE</div> <div>T +44(0)20 8960 5550</div> <div>F +44(0)20 8969 8668</div> <div>mail@stiffandtrevillion.com</div> <div>www.stiffandtrevillion.com</div>	Project 36 PARK VILLAGE EAST LONDON NW1 1PZ	
	Drawing WINDOW SCHEDULE 1 AS PROPOSED				
	Project No	Drawing No		Revision	
	3139	TP.3000		-	
	Scale	1:10 @ A1 1:20 @ A3		Date	NOV2012

PROPOSED WINDOW SCHEDULE 2

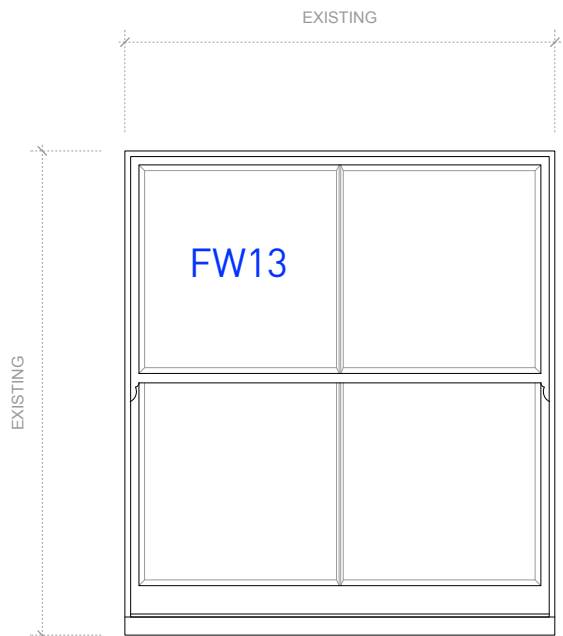


<div>GENERAL NOTES:</div> <div>Do not scale from this drawing.</div> <div>Check drawing on receipt and immediately report any discrepancies to the Architect.</div> <div>Verify all dimensions and levels on site prior to construction.</div> <div>The contents of this drawing are Stiff + Trevillion Architects LLP copyright and shall not be re-used without their written permission.</div>	No.	Date	Revision Notes	<div>PLANNING</div> <div>Stiff + Trevillion</div> <div>Stiff + Trevillion Architects LLP 16 Woodfield Road London W9 2BE</div> <div>T +44(0)20 8960 5550 F +44(0)20 8969 8668 mail@stiffandtrevillion.com www.stiffandtrevillion.com</div>	<div>Project</div> <div>36 PARK VILLAGE EAST LONDON NW1 1PZ</div>		
	<div>Drawing</div> <div>WINDOW SCHEDULE 2 AS PROPOSED</div>						
	<div>Project No</div> <div>3139</div>		<div>Drawing No</div> <div>TP.3001</div>		<div>Revision</div> <div>-</div>		
	<div>Scale</div> <div>1:10 @ A1 1:20 @ A3</div>		<div>Date</div> <div>NOV2012</div>		<div>Revised</div> <div>-</div>		

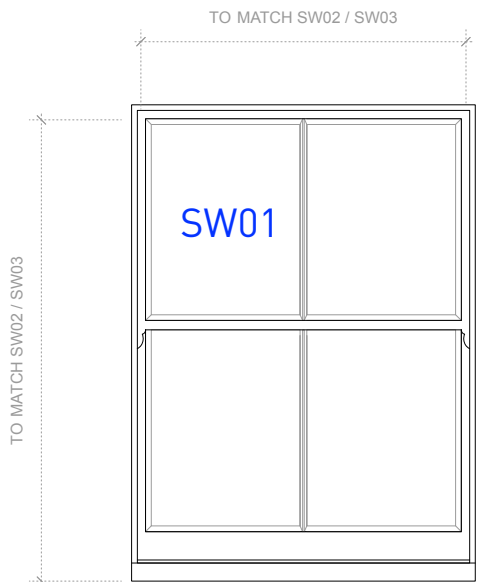
PROPOSED WINDOW SCHEDULE 3



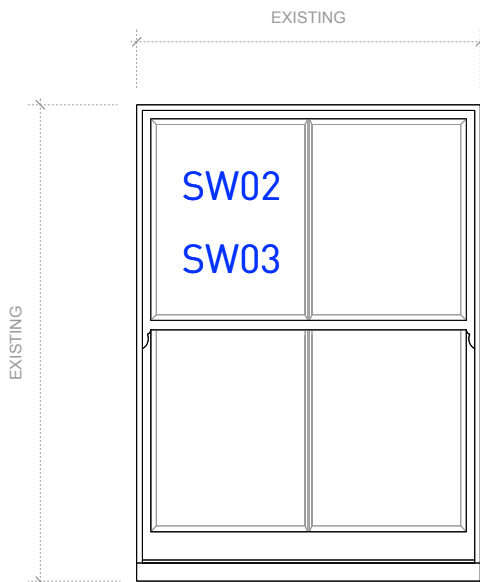
TYPE B



TYPE B



TYPE B



TYPE B

GENERAL NOTES:
Do not scale from this drawing.
Check drawing on receipt and immediately report any discrepancies to the Architect.
Verify all dimensions and levels on site prior to construction.
The contents of this drawing are Stiff + Trevillion Architects LLP copyright and shall not be re-used without their written permission.

No.	Date	Revision Notes
-----	------	----------------

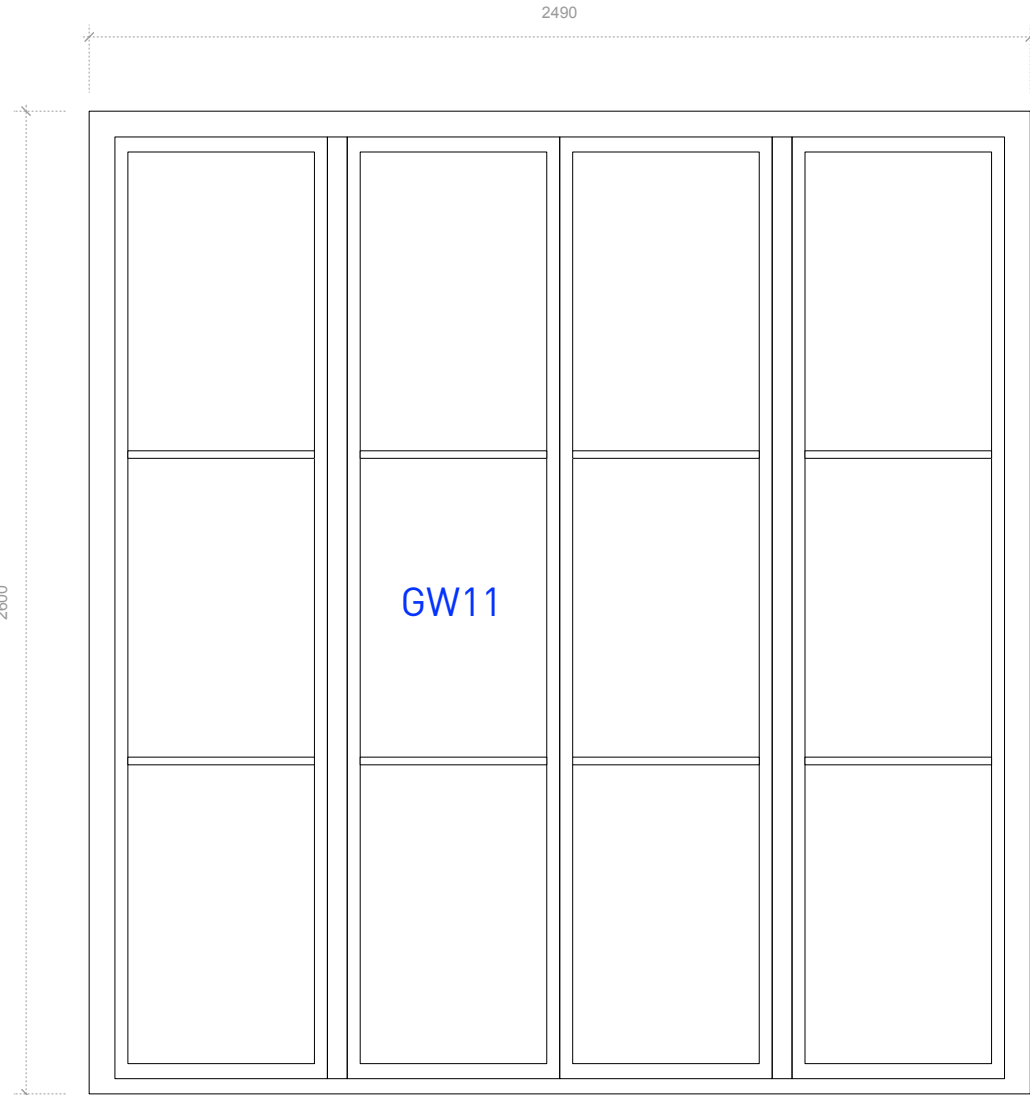
PLANNING

Stiff + Trevillion

Stiff + Trevillion Architects LLP
16 Woodfield Road
London W9 2BE
T +44(0)20 8960 5550
F +44(0)20 8969 8668
mail@stiffandtrevillion.com
www.stiffandtrevillion.com

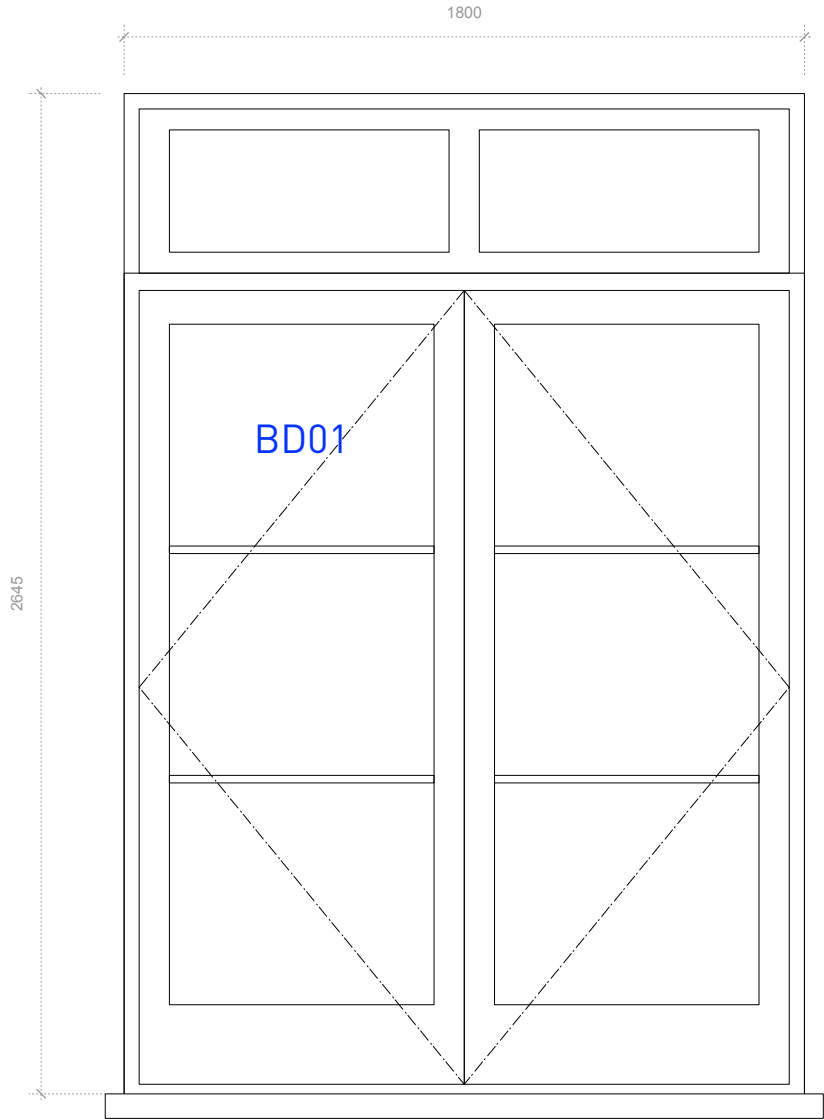
Project 36 PARK VILLAGE EAST LONDON NW1 1PZ		
Drawing WINDOW SCHEDULE 3 AS PROPOSED		
Project No 3139	Drawing No TP.3002	Revision -
Scale 1:10 @ A1 1:20 @ A3	Date NOV/2012	Revised -

PROPOSED DOOR SCHEDULE 1



TYPE B

WINDOWS: GW11
NEW FIXED PAINTED
TIMBER WINDOW.
GLAZING BARS TO
MATCH TYPICAL
WINDOW DETAIL TYPE B

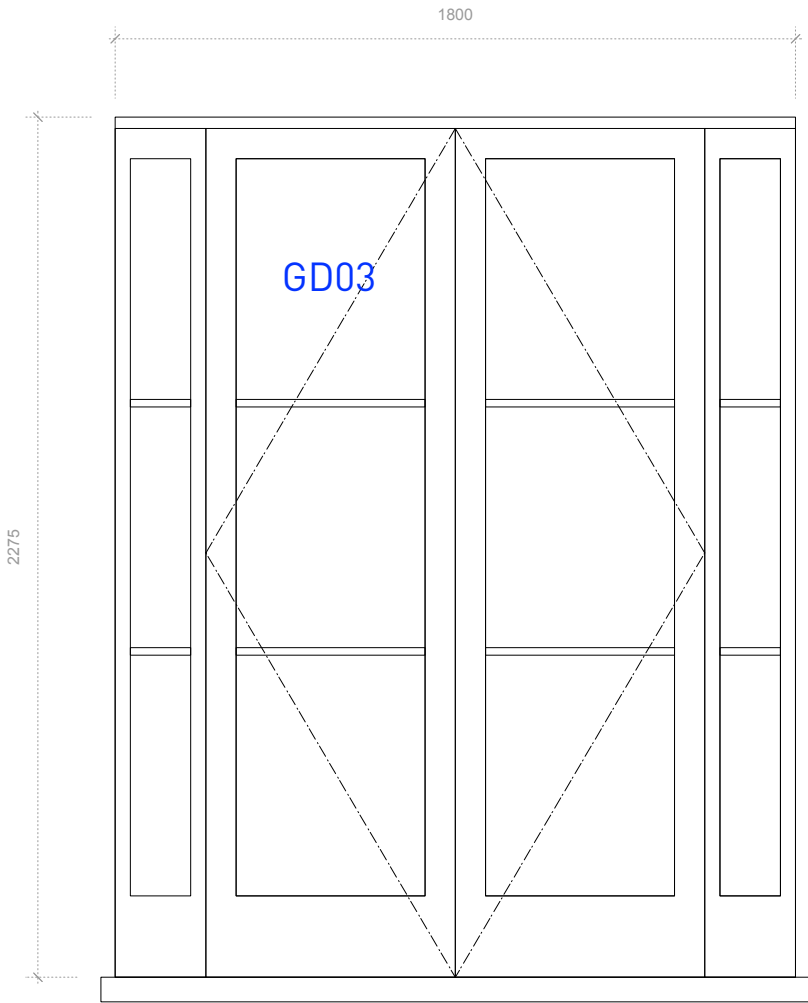


TYPE B

DOOR TYPE 1
DOORS: BD01
NEW PAINTED TIMBER
GLAZED DOORS WITH
FIXED FANLIGHT.
GLAZING BARS TO MATCH
TYPICAL WINDOW DETAIL
TYPE B

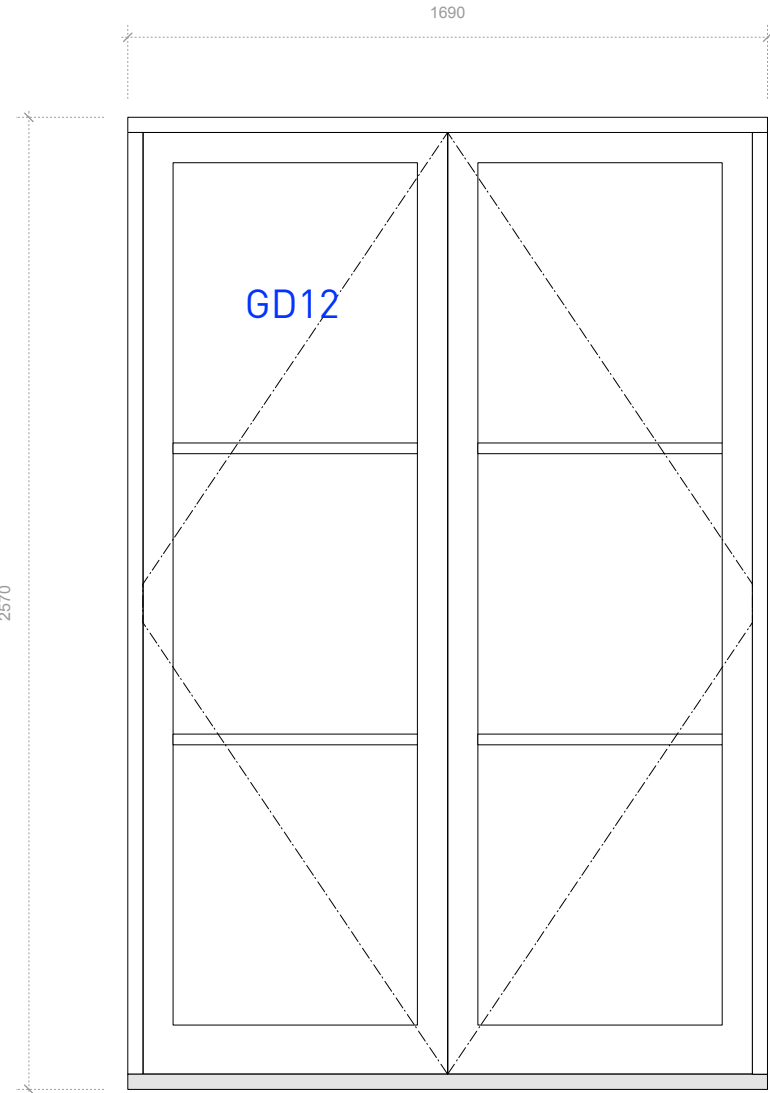
<div>GENERAL NOTES:</div> <div>Do not scale from this drawing.</div> <div>Check drawing on receipt and immediately report any discrepancies to the Architect.</div> <div>Verify all dimensions and levels on site prior to construction.</div> <div>The contents of this drawing are Stiff + Trevillion Architects LLP copyright and shall not be re-used without their written permission.</div>	No.	Date	Revision Notes	<div>PLANNING</div> <div>Stiff + Trevillion</div> <div>Stiff + Trevillion Architects LLP 16 Woodfield Road London W9 2BE</div> <div>T +44(0)20 8960 5550 F +44(0)20 8969 8668 mail@stiffandtrevillion.com www.stiffandtrevillion.com</div>	Project 36 PARK VILLAGE EAST LONDON NW1 1PZ		
	Drawing DOOR SCHEDULE 1 AS PROPOSED				Project No 3139		
	Drawing No TP.3003				Revision -		
	Scale 1:10 @ A1 1:20 @ A3				Date NOV/2012		
	Revised -						

PROPOSED DOOR SCHEDULE 2



TYPE B

DOOR TYPE 13
DOOR: GD03
NEW PAINTED TIMBER
GLAZED DOORS WITH
FIXED SIDELIGHTS.
GLAZING BARS TO MATCH
TYPICAL WINDOW DETAIL
TYPE B



TYPE B

DOOR TYPE 18
DOORS: GD12
NEW PAINTED TIMBER
GLAZED DOORS.
GLAZING BARS TO MATCH
TYPICAL WINDOW DETAIL
TYPE B

<div>GENERAL NOTES:</div> <div>Do not scale from this drawing.</div> <div>Check drawing on receipt and immediately report any discrepancies to the Architect.</div> <div>Verify all dimensions and levels on site prior to construction.</div> <div>The contents of this drawing are Stiff + Trevillion Architects LLP copyright and shall not be re-used without their written permission.</div>	No. Date Revision Notes		PLANNING	<div>Stiff + Trevillion</div> <div>Stiff + Trevillion Architects LLP 16 Woodfield Road London W9 2BE T +44(0)20 8960 5550 F +44(0)20 8969 8668 mail@stiffandtrevillion.com www.stiffandtrevillion.com</div>	Project	36 PARK VILLAGE EAST LONDON NW1 1PZ				
	Drawing				DOOR SCHEDULE 2 AS PROPOSED					
	Project No				3139	Drawing No		TP.3004	Revision	-
	Scale				1:10 @ A1 1:20 @ A3	Date		NOV/2012	Revised	-