



# Slot Drain Duo and Mono

## Slot Drainage System



Slot Drain Mono

- Discreet linear drainage system.
- Single or double slot entry.
- Constant and inbuilt fall bases available.
- Bespoke solutions available.
- Slot Drain Mono Load Classification C250.
- Slot Drain Duo Load Classification E600.
- Ideally suited for all paved areas where discreet yet efficient drainage is required, from prestigious pedestrian areas to motorway crossovers.
- Fully compatible with Marshalls range of paving materials and with extra care, other surfacing materials such as tarmac or in-situ concrete.



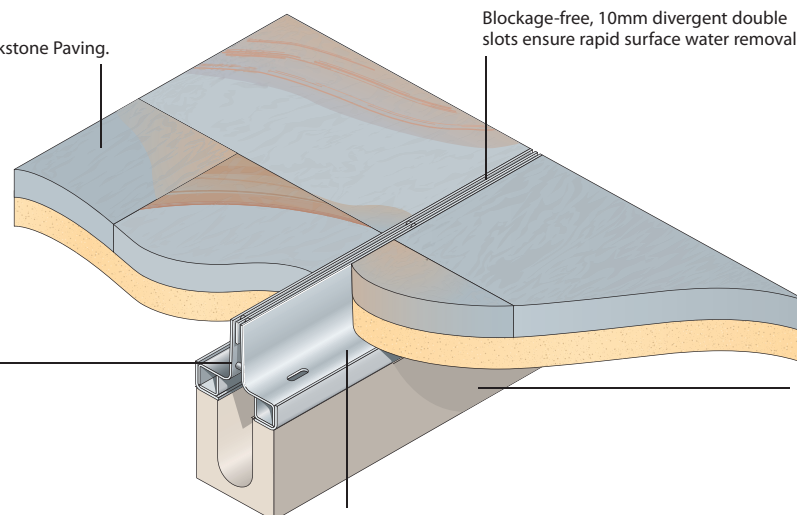
Slot Drain Duo

### How It Works

- An innovative solution that combines a fabricated, galvanised steel slot drain top to a base channel unit.
- The single entry slot drain seats itself on a Landscape Drain Channel unit.
- The double entry slot drain is positively bolted to a Marshalls Birco 100 Channel unit, ensuring a tamper proof and secure system.
- Access units allow for maintenance of the channel system.
- Bespoke solutions can be manufactured including alternative depth of top units, use of stainless steel and increased width, i.e. 150 or 200mm enabling solutions to suit your project demands.

Illustration shows Slot Drain with Yorkstone Paving.  
 For construction details refer to the  
 Drainage Design Guide

Discreet slots, Slot Drain Top  
 Units available in a range  
 of depths to accommodate  
 pavement construction



Blockage-free, 10mm divergent double  
 slots ensure rapid surface water removal

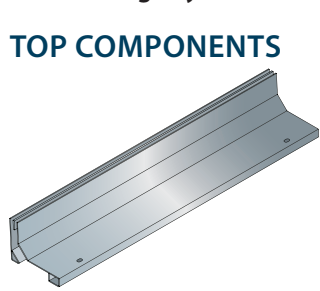
Robust and proven Birco  
 100 Channel Unit with  
 secure fixing detail

Heavy traffic, Loading Classification  
 E600 as defined by BS EN 1433:2002

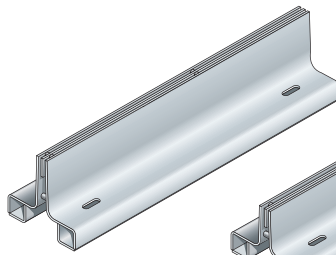
# Slot Drain Duo Components

## Slot Drainage System

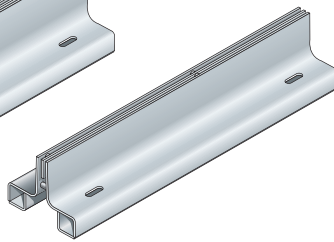
### TOP COMPONENTS



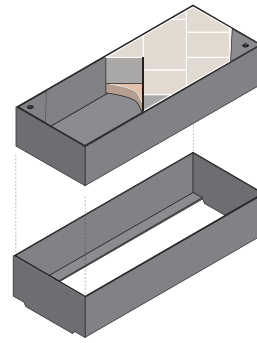
Offset Slot Drain 105



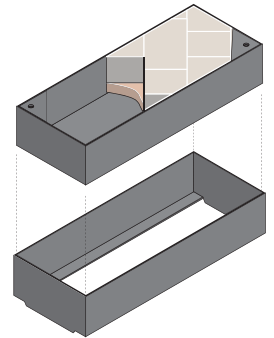
Slot Drain 105



Slot Drain 90



Access Cover and Frame 105



Access Cover and Frame 90

### BASE COMPONENTS

Base Channels are available in 1000mm or 500mm lengths

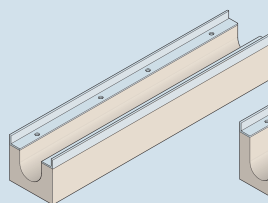
#### BASE CHANNELS

Birco 100 Base

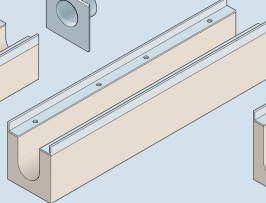
Cap Outlet



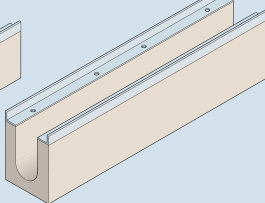
100 End Cap



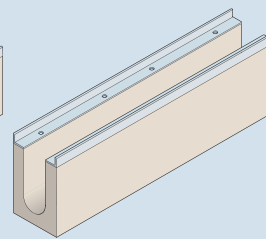
0/0 Channel



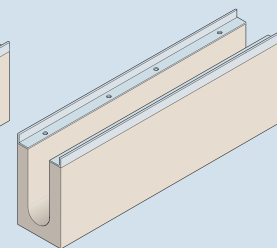
5/0 Channel



10/0 Channel

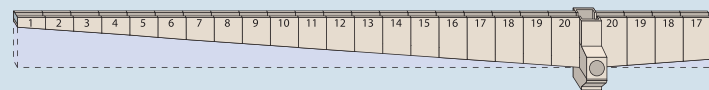


15/0 Channel



20/0 Channel

### INBUILT FALL



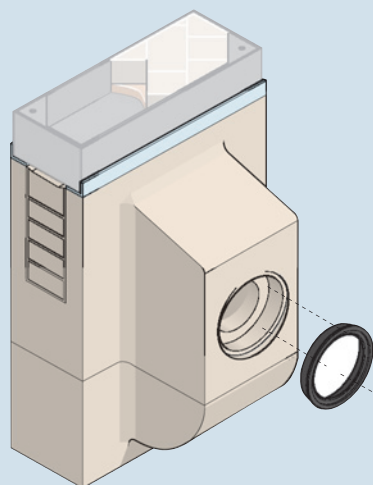
Slot Drain Channels are available with inbuilt falls. Inbuilt Fall Channels increase drainage discharge capacity by improving flow rates and thereby increasing the overall discharge capacity of the system. Inbuilt fall channels are 1000mm long.

### OUTFALLS

#### INLINE SIDE OUTLET OUTFALL

- A 2 section concrete trapped outfall, with galvanised steel inlaid access cover and frame.
- Side outlet for 150mm diameter pipework with universal seal.
- Cut-out panels in the silt box allow Slot Drain runs from both sides.

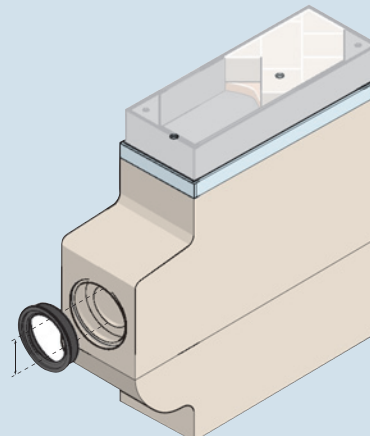
**Note:** Slot Drain Access Cover and Frame available separately.



#### INLINE END OUTLET OUTFALL

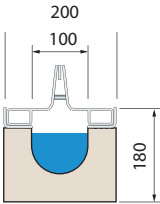
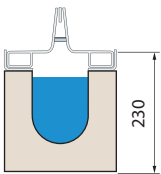
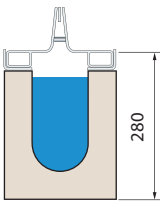
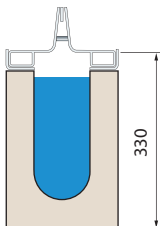
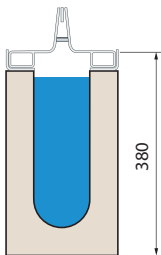
- A 2 section concrete trapped outfall, silt box with galvanised steel inlaid access cover and frame
- End outlet for 100mm diameter pipework with universal seal.
- Cut-out panel to allow Slot Drain run from one side only.

**Note:** Slot Drain Access Cover and Frame available separately.



## FLOW CAPACITY (litres/sec)

More comprehensive hydraulic properties are given in the Drainage Design Guide

	Slot Drain with Birco 100 0/0 Channel Unit	Slot Drain with Birco 100 5/0 Channel Unit	Slot Drain with Birco 100 10/0 Channel Unit	Slot Drain with Birco 100 15/0 Channel Unit	Slot Drain with Birco 100 20/0 Channel Unit
					
	Equivalent Pipe Diameter (mm) 375	Equivalent Pipe Diameter (mm) 525	Equivalent Pipe Diameter (mm) 160	Equivalent Pipe Diameter (mm) 175	Equivalent Pipe Diameter (mm) 190
Gradient Length (m)					
30	16	26	16	26	59
50	12	20	12	20	46
75	10	17	10	17	37
100	9	14	9	14	32
150	7	12	7	12	26
200	6	10	6	10	23
500	4	6	4	6	14
750	3	5	3	5	12
1000	3	4	3	4	10

Note: 1. Flow figures, l/s, are derived from Colebrook-White equation.

# Slot Drain Duo

## Component Codes

TOP UNITS		
Slot Drain 90	Weight (kg)	Item Code
Slot Drain 90 Top 500mm	9	DR4955300
Slot Drain 90 Top 1000mm	17	DR4955400
Slot Drain 90 F Rad 500mm	9	DR4955630
Slot Drain 90 Access Cover	12	DR4955050

STAINLESS STEEL TOP UNITS		
Slot Drain 90	Weight (kg)	Item Code
Slot Drain 90 S/S Top 500mm	9	DR4955350
Slot Drain 90 S/S Top 1000mm	18	DR4955450
Slot Drain 90 Access Cover	14	DR4955070

TOP UNITS		
Slot Drain 105	Weight (kg)	Item Code
Slot Drain 105 Top 500mm	9	DR4956300
Slot Drain 105 Top 1000mm	18	DR4956400
Slot Drain 105 Offset 500mm	9	DR4956850
Slot Drain 105 F Rad 500mm	9	DR4956630
Slot Drain 105 Offset 1000mm	18	DR4956750
Slot Drain 105 Access Cover	14	DR4956050

STAINLESS STEEL TOP UNITS		
Slot Drain 105	Weight (kg)	Item Code
Slot Drain 105 S/S Top 500mm	9	DR4956350
Slot Drain 105 S/S Top 1000mm	18	DR4956450
Slot Drain 105 S/S Access Cover	14	DR4956070

BASE COMPONENTS		
Caps	Weight (kg)	Item Code
100 End Cap 0/0	1	DR1251500
100 End Cap 5/0	1	DR1251550
100 End Cap 10/0	1	DR1251600
100 End Cap 15/0	2	DR1251650
100 End Cap 20/0	2	DR1251700
100 Cap Outlet 0/0	1	DR1251750
100 Cap Outlet 5/0	1	DR1251800
100 Cap Outlet 10/0	1	DR1251850
100 Cap Outlet 15/0	2	DR1251900
100 Cap Outlet 20/0	2	DR1251950

BASE COMPONENTS		
Outfalls	Weight (kg)	Item Code
100 Outfall 100mm End	105	DR1301700
100 Outfall 150mm Side	142	DR1301750

# Slot Drain Duo

## Component Codes

BASE UNITS		
Base Channels	Weight (kg)	Item Code
100 Channel 0/0 1000mm	55	<b>DR0801050</b>
100 Channel 5/0 1000mm	65	<b>DR0801150</b>
100 Channel 10/0 1000mm	75	<b>DR0801250</b>
100 Channel 15/0 1000mm	85	<b>DR0801350</b>
100 Channel 20/0 1000mm	95	<b>DR0801450</b>
100 Channel 0/0 500mm	28	<b>DR0901500</b>
100 Channel 5/0 500mm	33	DR0901600
100 Channel 10/0 500mm	39	DR0901700
100 Channel 15/0 500mm	43	DR0901800
100 Channel 20/0 500mm	51	DR0901900
100 IBF Channel No.1	57	<b>DR1000100</b>
100 IBF Channel No.2	59	<b>DR1000200</b>
100 IBF Channel No.3	61	<b>DR1000300</b>
100 IBF Channel No.4	63	<b>DR1000400</b>
100 IBF Channel No.5	65	<b>DR1000500</b>
100 IBF Channel No.6	67	<b>DR1000600</b>
100 IBF Channel No.7	69	<b>DR1000700</b>
100 IBF Channel No.8	71	<b>DR1000800</b>
100 IBF Channel No.9	73	<b>DR1000900</b>
100 IBF Channel No.10	75	<b>DR1001000</b>
100 IBF Channel No.11	77	<b>DR1001100</b>
100 IBF Channel No.12	79	<b>DR1001200</b>
100 IBF Channel No.13	81	<b>DR1001300</b>
100 IBF Channel No.14	83	<b>DR1001400</b>
100 IBF Channel No.15	85	<b>DR1001500</b>
100 IBF Channel No.16	87	<b>DR1001600</b>
100 IBF Channel No.17	89	<b>DR1001700</b>
100 IBF Channel No.18	91	<b>DR1001800</b>
100 IBF Channel No.19	93	<b>DR1001900</b>
100 IBF Channel No.20	95	<b>DR1002000</b>

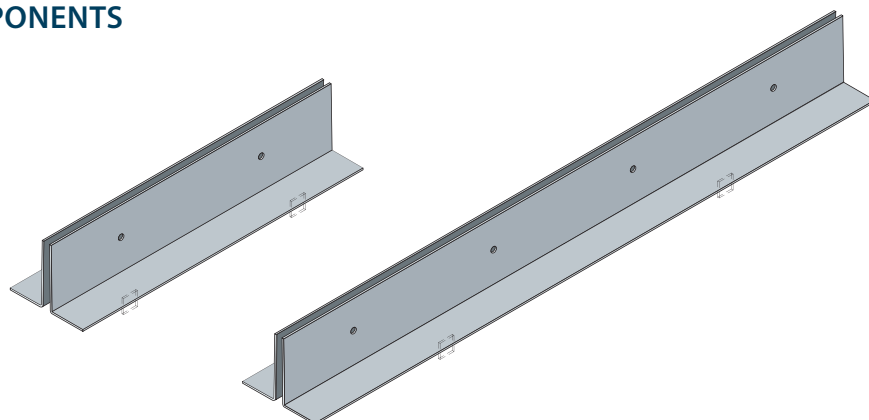
BASE COMPONENTS		
T-Channels	Weight (kg)	Item Code
100 T-Channel 0/0	27	<b>DR1101210</b>
100 T-Channel 5/0	33	<b>DR1101250</b>
100 T-Channel 10/0	39	DR1101300

Slot Drain Duo with reference numbers indicated in bold black are available ex-stock.  
Slot Drain Duo with reference numbers indicated in light black are manufactured to order.  
Contact our sales office to discuss your requirements.

# Slot Drain Mono Components

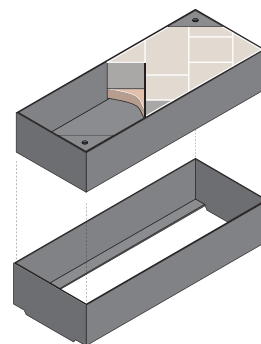
## Slot Drainage System

### TOP COMPONENTS



Slot Drain Mono 500

Slot Drain Mono 1000

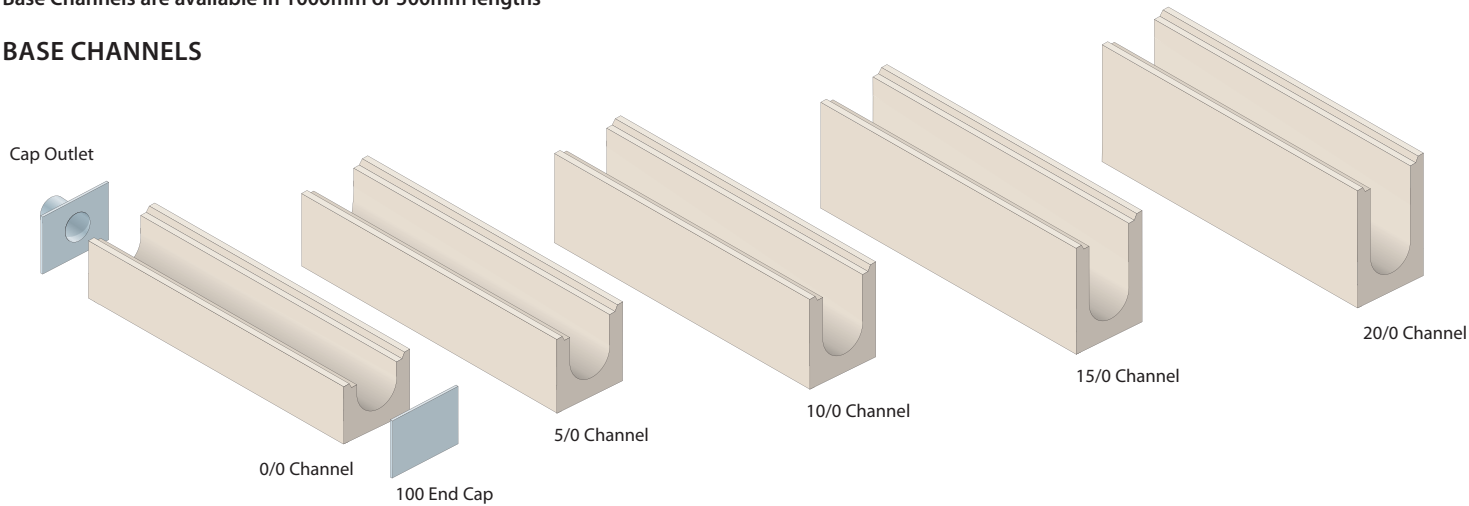


Slot Drain Mono Access Cover

### BASE COMPONENTS

Base Channels are available in 1000mm or 500mm lengths

#### BASE CHANNELS



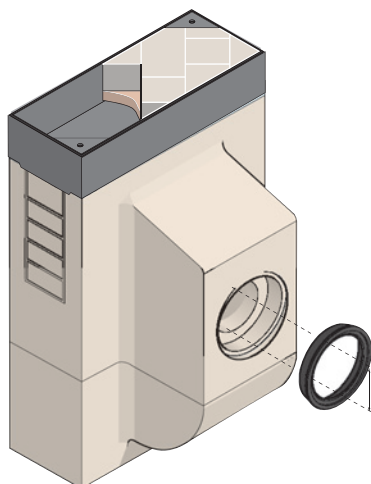
### OUTFALLS

#### INLINE SIDE OUTLET OUTFALL

(supplied in two sections with universal-fit seal and stopper included)

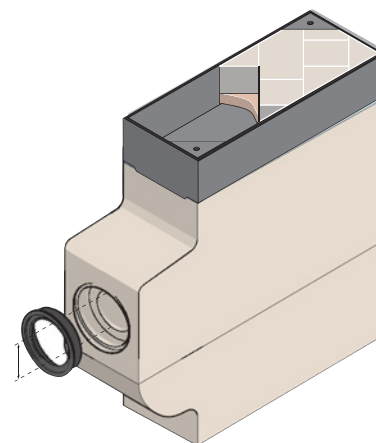
- A 2 section concrete trapped outfall, silt box with galvanised steel inlaid access cover and frame.
- Side outlet for 150mm diameter pipework with universal seal.
- Cut-out panels in the silt box allow slot drain runs from both sides.

**Note: Slot Drain Access Cover and Frame available separately.**



- A 2 section concrete outfall unit trapped outfall, silt box with access cover and frames available separately.
- Outlet suitable for a 100mm diameter outlet pipe with universal seal.
- Cut-out panel to allow slot drain run from one side only.

**Note: Slot Drain Access Cover and Frame available separately.**

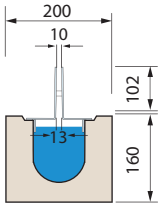
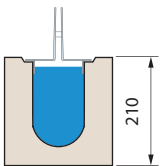
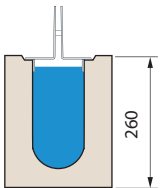
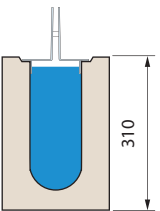
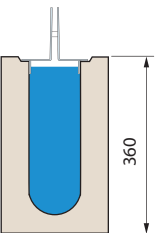


#### INLINE END OUTLET OUTFALL

(supplied in two sections with universal-fit seal and stopper included)

## FLOW CAPACITY (litres/sec)

More comprehensive hydraulic properties are given in the Drainage Design Guide

	Slot Drain with Landscape Channel, 0/0 Channel Unit	Slot Drain with Landscape Channel, 5/0 Channel Unit	Slot Drain with Landscape Channel, 10/0 Channel Unit	Slot Drain with Landscape Channel, 15/0 Channel Unit	Slot Drain with Landscape Channel, 20/0 Channel Unit
					
	Equivalent Pipe Diameter (mm) 120	Equivalent Pipe Diameter (mm) 145	Equivalent Pipe Diameter (mm) 160	Equivalent Pipe Diameter (mm) 175	Equivalent Pipe Diameter (mm) 190
Gradient (1 in)					
30	16	26	37	48	59
50	12	20	29	37	46
75	10	17	23	30	37
100	9	14	20	26	32
150	7	12	16	21	26
200	6	10	14	18	23
500	4	6	9	12	14
750	3	5	7	9	12
1000	3	4	6	8	10

Note: 1. Flow figures, l/s, are derived from Colebrook-White equation.

# Slot Drain Mono

## Component Codes

TOP COMPONENTS		
Top Units	Unit Weight (kg)	Item Code
Slot Drain Mono 500mm Top Unit	5	DR4958100
Slot Drain Mono 1000mm Top Unit	10	DR4958200

BASE COMPONENTS		
Base Channels	Unit Weight (kg)	Item Code
Channel 0/0 1000mm	50	DR3206100
Channel 5/0 1000mm	60	DR3206200
Channel 10/0 1000mm	70	DR3206300
Channel 15/0 1000mm	80	DR3206400
Channel 20/0 1000mm	90	DR3206500
IBF Channel No. 1	52	DR3300100
IBF Channel No. 2	54	DR3300200
IBF Channel No. 3	56	DR3300300
IBF Channel No. 4	58	DR3300400
IBF Channel No. 5	60	DR3300500
IBF Channel No. 6	62	DR3300600
IBF Channel No. 7	64	DR3300700
IBF Channel No. 8	66	DR3300800
IBF Channel No. 9	68	DR3300900
IBF Channel No. 10	70	DR3301000
IBF Channel No. 11	72	DR3301100
IBF Channel No. 12	74	DR3301200
IBF Channel No. 13	76	DR3301300
IBF Channel No. 14	78	DR3301400
IBF Channel No. 15	80	DR3301500
IBF Channel No. 16	82	DR3301600
IBF Channel No. 17	84	DR3301700
IBF Channel No. 18	86	DR3301800
IBF Channel No. 19	88	DR3301900
IBF Channel No. 20	90	DR3302000

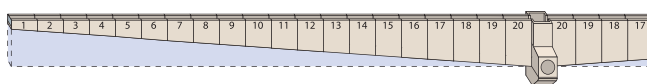
Items available ex-stock.

TOP COMPONENTS		
Access Cover	Unit Weight (kg)	Item Code
Slot Drain Access Cover & Frame	20	DR4958000

BASE COMPONENTS		
Outfalls	Unit Weight (kg)	Item Code
Outfall 100mm End	104	DR3556700
Outfall 150mm Side	142	DR3556750

BASE COMPONENTS		
Caps	Unit Weight (kg)	Item Code
100 End Cap 0/0	1	DR1251500
100 End Cap 5/0	1	DR1251550
100 End Cap 10/0	1	DR1251600
100 End Cap 15/0	2	DR1251650
100 End Cap 20/0	2	DR1251700
100 Cap Outlet 0/0	1	DR1251750
100 Cap Outlet 5/0	1	DR1251800
100 Cap Outlet 10/0	1	DR1251850
100 Cap Outlet 15/0	2	DR1251900
100 Cap Outlet 20/0	2	DR1251950

## Inbuilt Fall



Slot Drain Channels are available with Inbuilt Falls. Inbuilt Fall Channels increase drainage discharge capacity by improving flow rates and thereby increasing the overall discharge capacity of the system. Inbuilt fall channels are 1000m long.