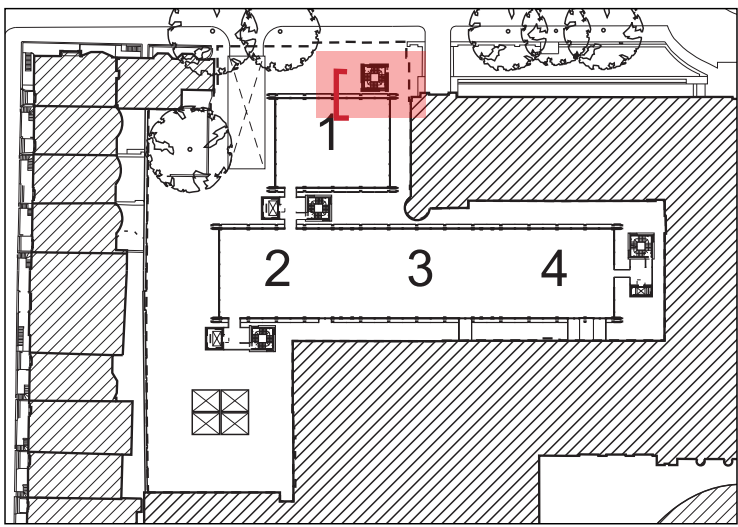


PLAN EXTRACT FROM PLANNING DRAWING **5370-FD-DB-700**
DETAILED BAY NORTH/SOUTH ELEVATION (BUILDING 1)



Fig P1070255 INTERIOR VIEW BETWEEN CAST GLASS AND DOUBLE GLAZED FACADE



KEY PLAN



1 VISUALISATION OF VIEW THROUGH CAST GLASS FACADE. AS SUBMITTED IN DESIGN + ACCESS STATEMENT



1 Fig P1020656 VIEW THROUGH CLEAR SECTIONS OF CAST GLASS

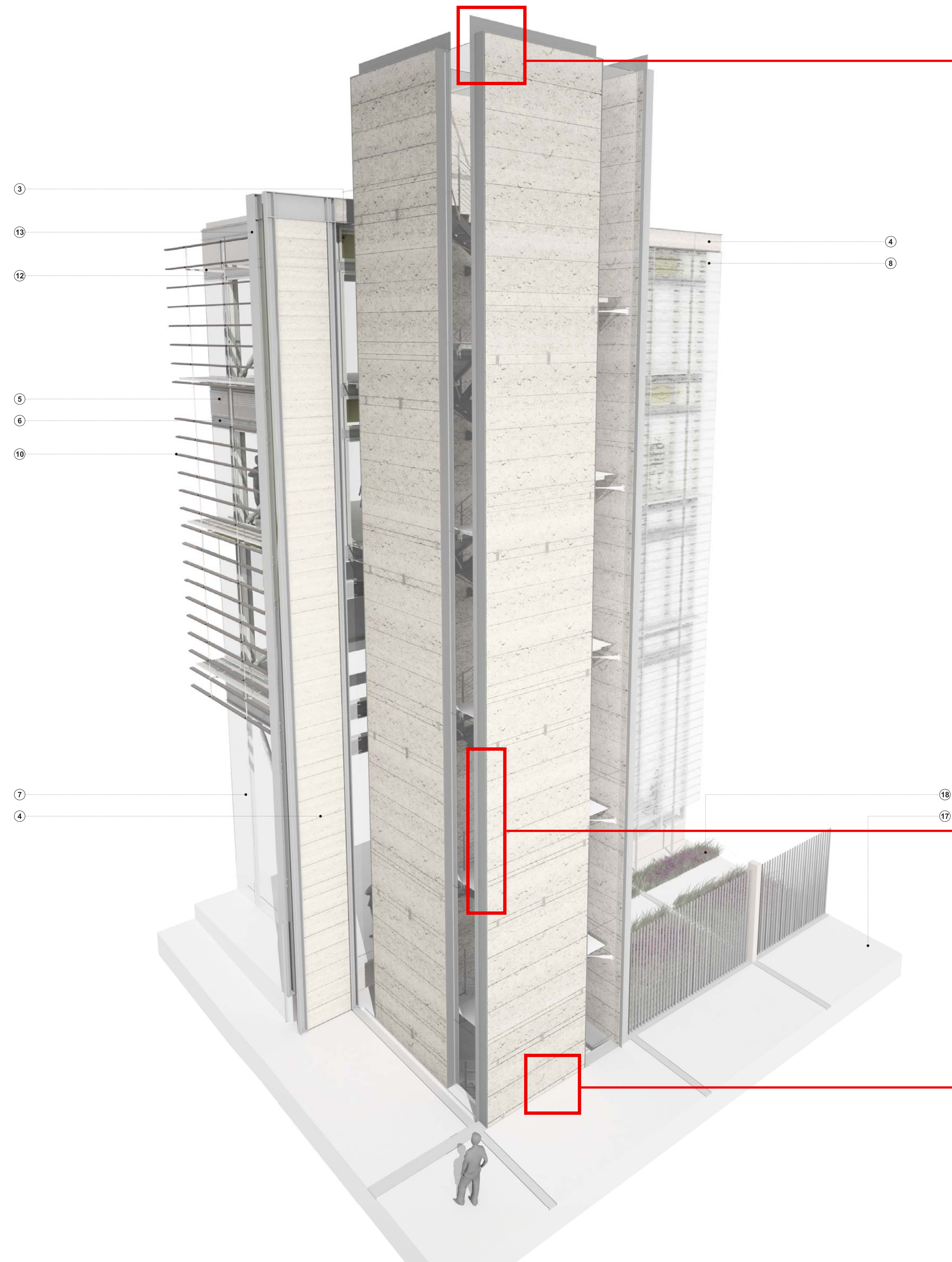


Fig P1070801 PORTLAND LIMESTONE CLADDING CORNER DETAIL

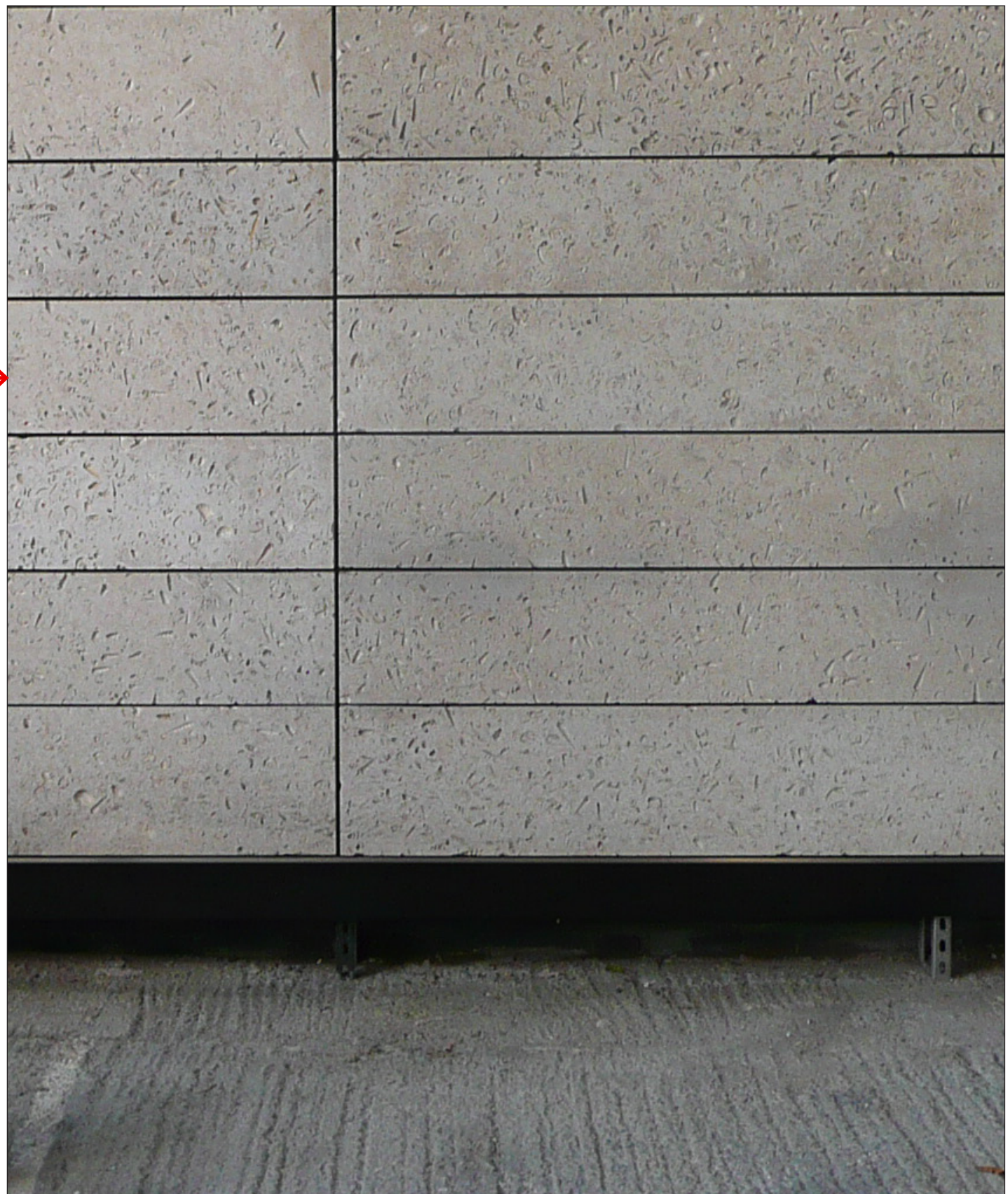


Fig P1070804 PORTLAND LIMESTONE BASE DETAIL

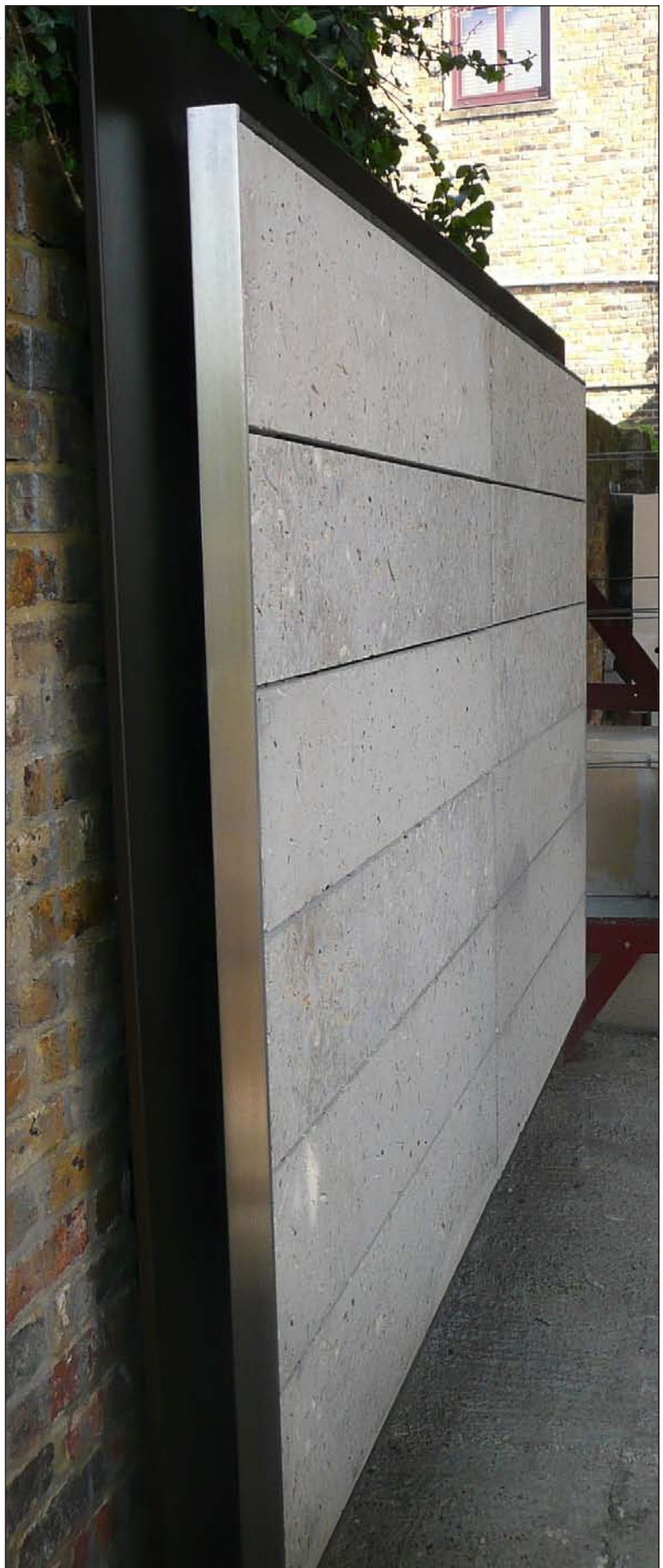
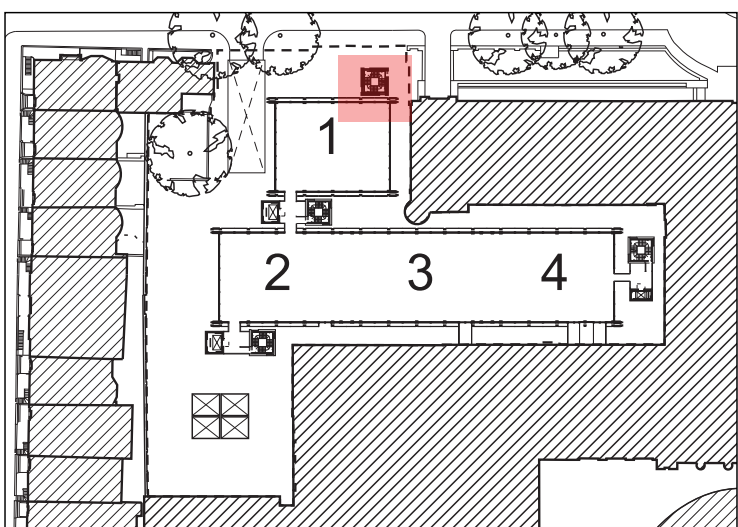


Fig P1070802 EDGE DETAIL

EXTRACT FROM PLANNING DRAWING **5370-FD-DB-703**
DETAILED BAY NORTH STAIR CORE NTS



KEY PLAN

MATERIALS DESCRIPTION

- 01 - LIFTS:
Full height single glazing butt jointed within silver grey anodised aluminium support system with opening vents
- 02 - STAIR CORE:
Loadbearing Portland stone flank walls with recessed single glazed fixed openings enclosing steel support framework
- 03 - LOBBIES:
Full height double glazing butt jointed within silver grey anodised aluminium support system
- 04 - EXTERNAL ENVELOPE:
Portland Stone solid slabs supported within primary structure
- 05 - EXTERNAL ENVELOPE:
Anodised aluminium cladding panels, anthracite grey, insulation to back
- 06 - EXTERNAL ENVELOPE:
Anodised aluminium, anthracite grey, micro pillane
- 09 - EXTERNAL ENVELOPE:
Extruded aluminium deck forming cleaning, maintenance and access walkway
- 10 - SOLAR SHADING:
Fixed dark grey anodised aluminium louvres on stainless steel support system
- 11 - SOLAR SHADING:
External roller blind to Level 2 West elevations only
- 12 - SOLAR SHADING:
Mild steel section painted anthracite grey forming support bracket to solar shading system
- 13 - STRUCTURE:
Primary structural steel frame painted anthracite grey
- 14 - ROOF:
Anodised aluminium, anthracite grey, micro pillane