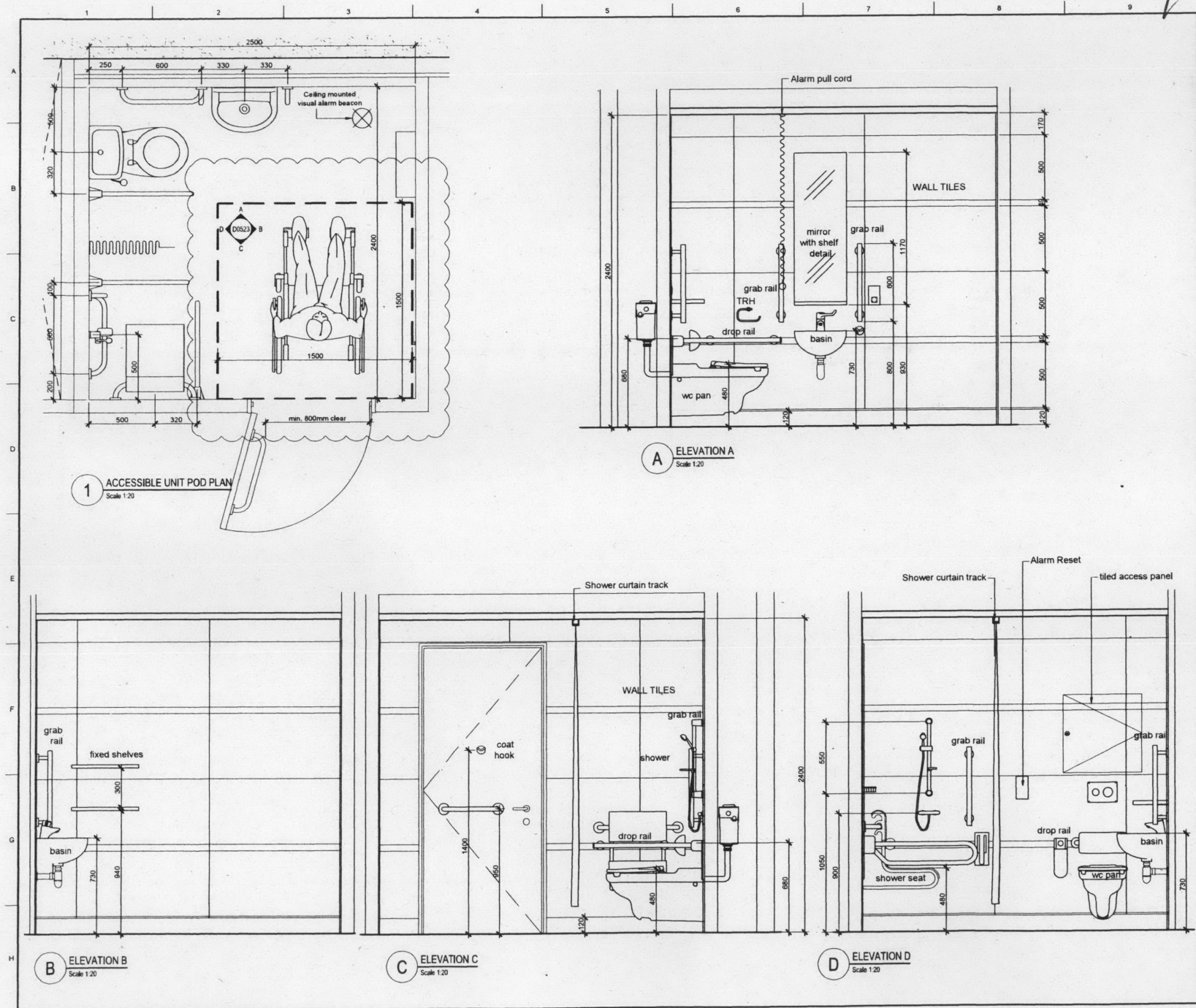


2012 6102/8



CLIENT

STRUCTURAL ENGINEER

SERVICES ENGINEER

CONSULTANT

ROOM REFERENCE NO's
BASEMENT - AD/B-9 and AD/B-12

ALL GRAB / HAND RAILS TO BE 'DOLPHIN' (OR SIMILAR APPROVED) STAINLESS STEEL WITH RUBBER GRIPS WHERE REQUIRED.

DO NOT SCALE. FIGURED DIMENSIONS ONLY TO BE TAKEN FROM THIS DRAWING. CHECK DIMENSIONS ON SITE AND REPORT DISCREPANCIES TO THE ARCHITECT.

THIS DRAWING IS PROTECTED BY COPYRIGHT.

ALL AREAS HAVE BEEN MEASURED FROM CURRENT DRAWINGS. THEY MAY VARY BECAUSE OF (E.G.) SURVEY, DESIGN DEVELOPMENT, CONSTRUCTION TOLERANCES, STATUTORY REQUIREMENTS OR RE-DEFINITION OF THE AREAS TO BE MEASURED.

No.	Date	Comment	Drawn	Chk'd
P2	18.12.12	1500 x 1500 wheelchair turning space shown	VG	dtb
P1	26.10.12	Issued for Planning Submission	MT	dtb

Revisions

Issue Status

PLANNING

tp bennett
architecture
interiors
planning

One American Street London E1 6NE UK +44 (0) 20 7268 5000 www.tpbenne.com

London Manchester Alder Sharn New York

Project

Student Residential Development
Bentley House, 200 Euston Road

Drawing Title

**PROPOSED ACCESSIBLE POD
PLANS / ELEVATIONS (Basement)**

Drawn	Date	Scale @ A2	Alt. Ref.	Rev
VG	07.08.12	1:20	-	-

tp bennett Project No. Drawing Number Rev

A10482 D 0523 P2

PLOTTED FILE IN ACTIVE PROJECTS ARCHITECTURE BENTLEY HOUSE DELICADATIVE/DOBIC-WARD PLANNING CONDITION 8/1/2012 10:18 PM

don. plan REC 20/12/12