

revisions:
All dimensions and areas are approximate and are to be verified on site.
notes:

NORTON MAYFIELD ARCHITECTS LLP

Spaceworks, Harland Works, John Street, Sheffield S2 4QU
t/f 0114 270 0014, studio@nortonmayfield.co.uk

PLANNING

client:

Gateville Developments Limited

61-63 Holmes Road
London

drawing N°:

1214- PL-501A

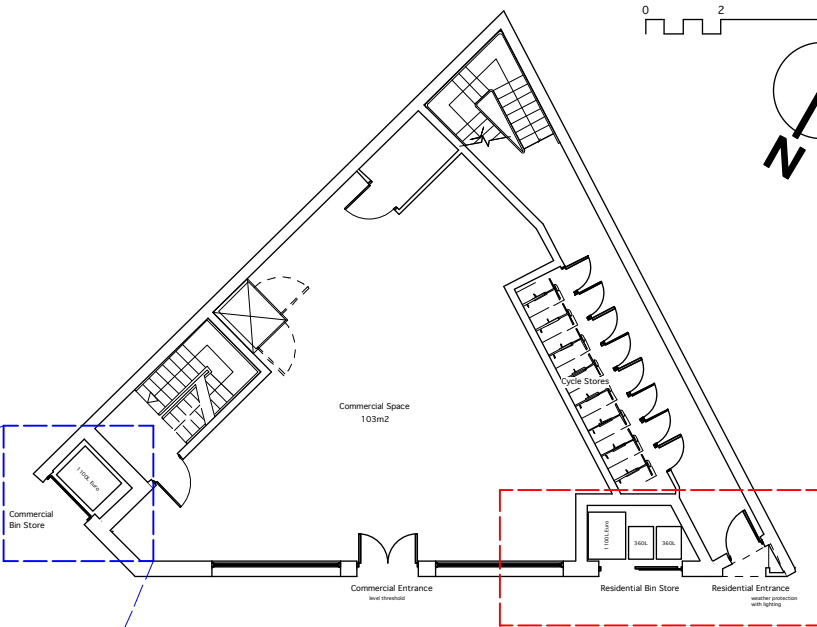
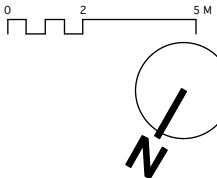
drawing title:

Details: Proposed Bin Store

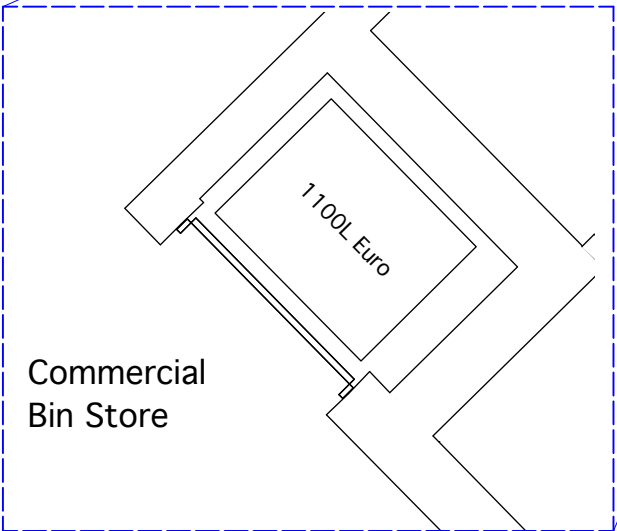
scale:
1:200 & 1:50 @ A3

date:

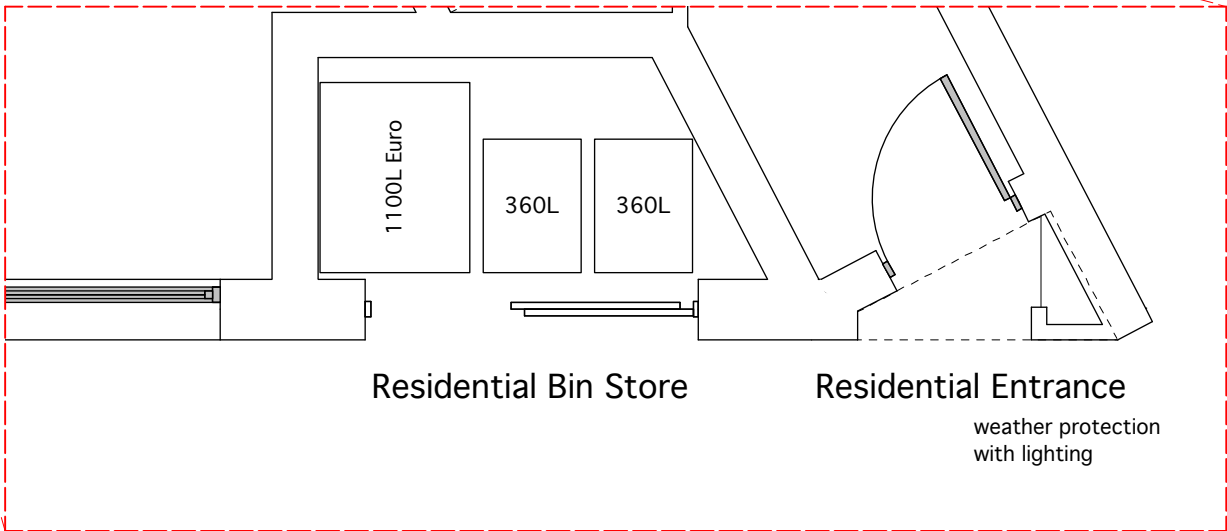
July 2012



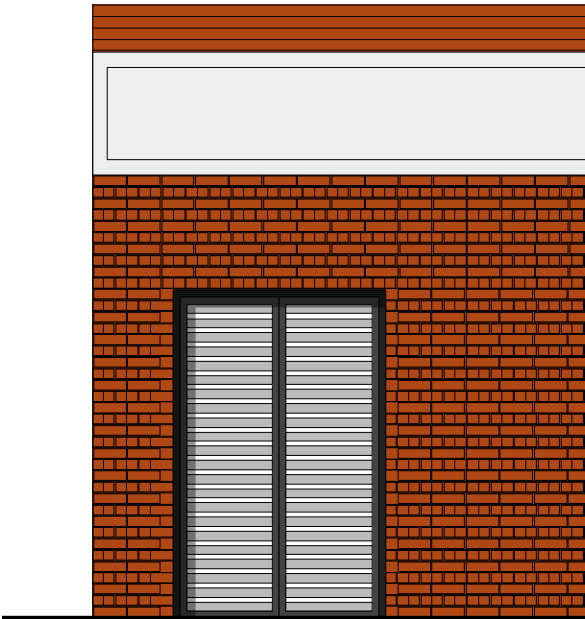
1:200 Plan



1:50 Plan



1:50 Plan



1:50 Elevation



1:50 Elevation