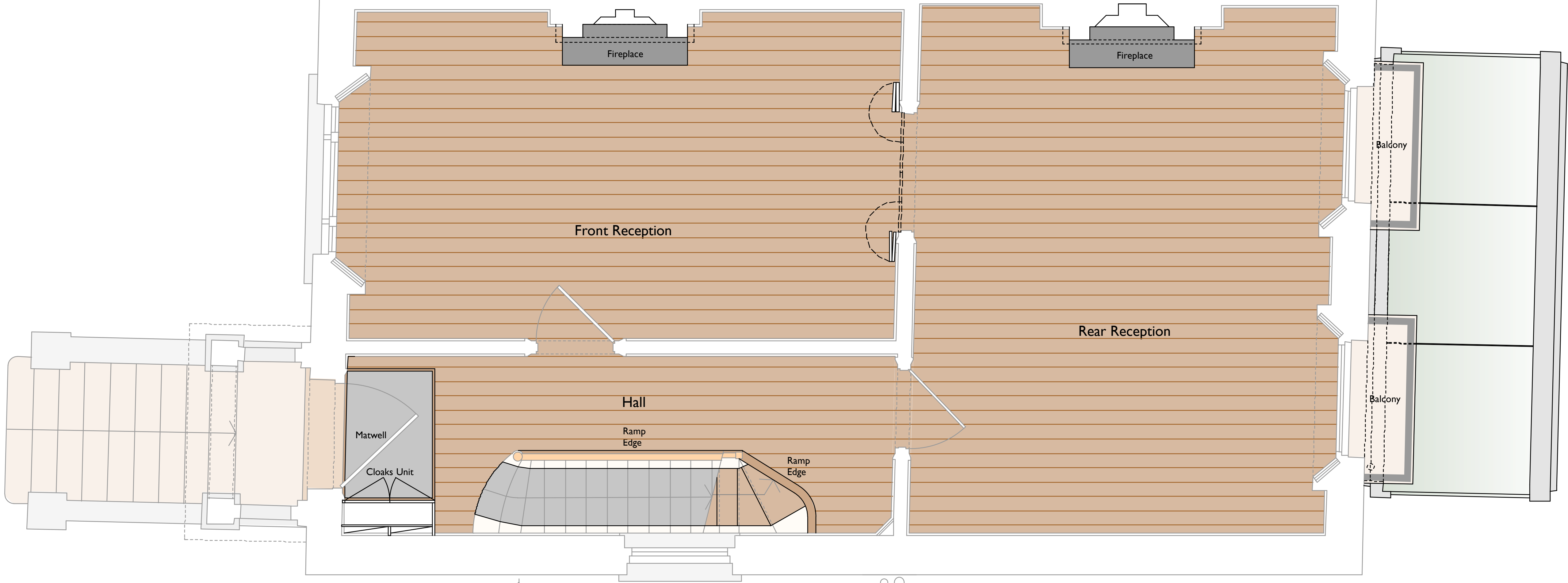
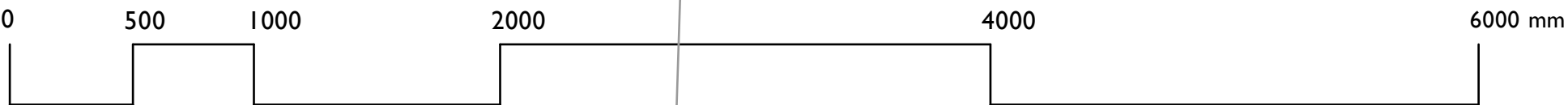
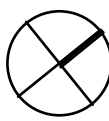



20 Eton Villas



18 Eton Villas

- Notes
- Details of existing areas of construction are indicative and are included for information only.
  - Fixings, waterproof membranes, vapour barriers, drips, flashings, sealants and other weathering items have been omitted for clarity.
  - All levels and dimensions will need to be checked on site prior to construction.



project	19 Eton Villas London NW3			 The Studio 28 Killyon Road London SW8 2XT contact@smerin.co.uk www.smerin.co.uk
title	Upper Ground Floor Floor Finishes Plan			
scale	1:50 at A3	project number	A101	
date	07.01.13	drawn by	PS	
drawing status	Planning	checked by	PS	
drawing number	PL 033	revision	-	