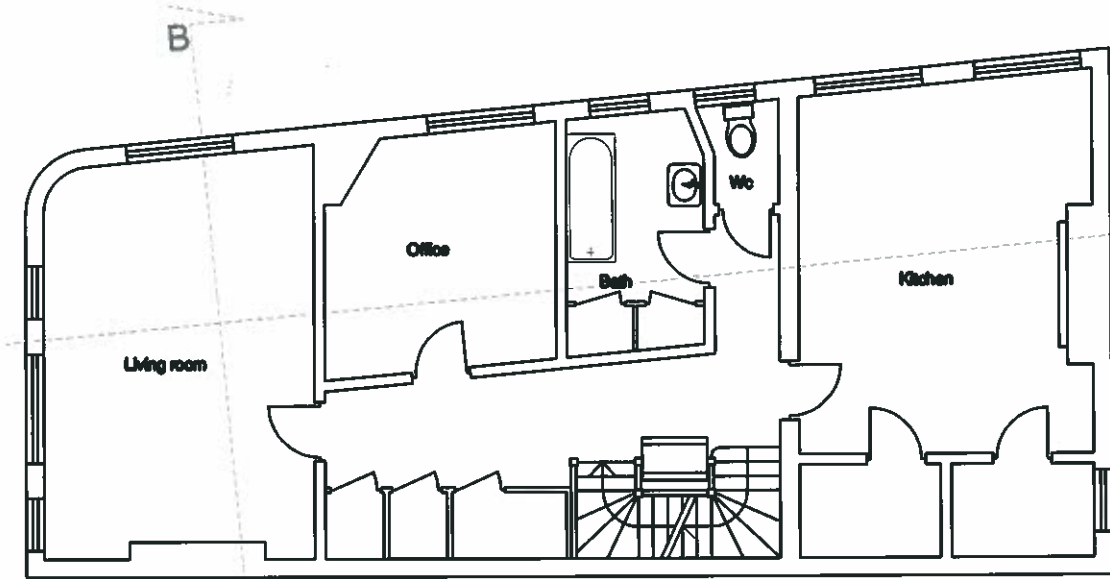


FIRST FLOOR

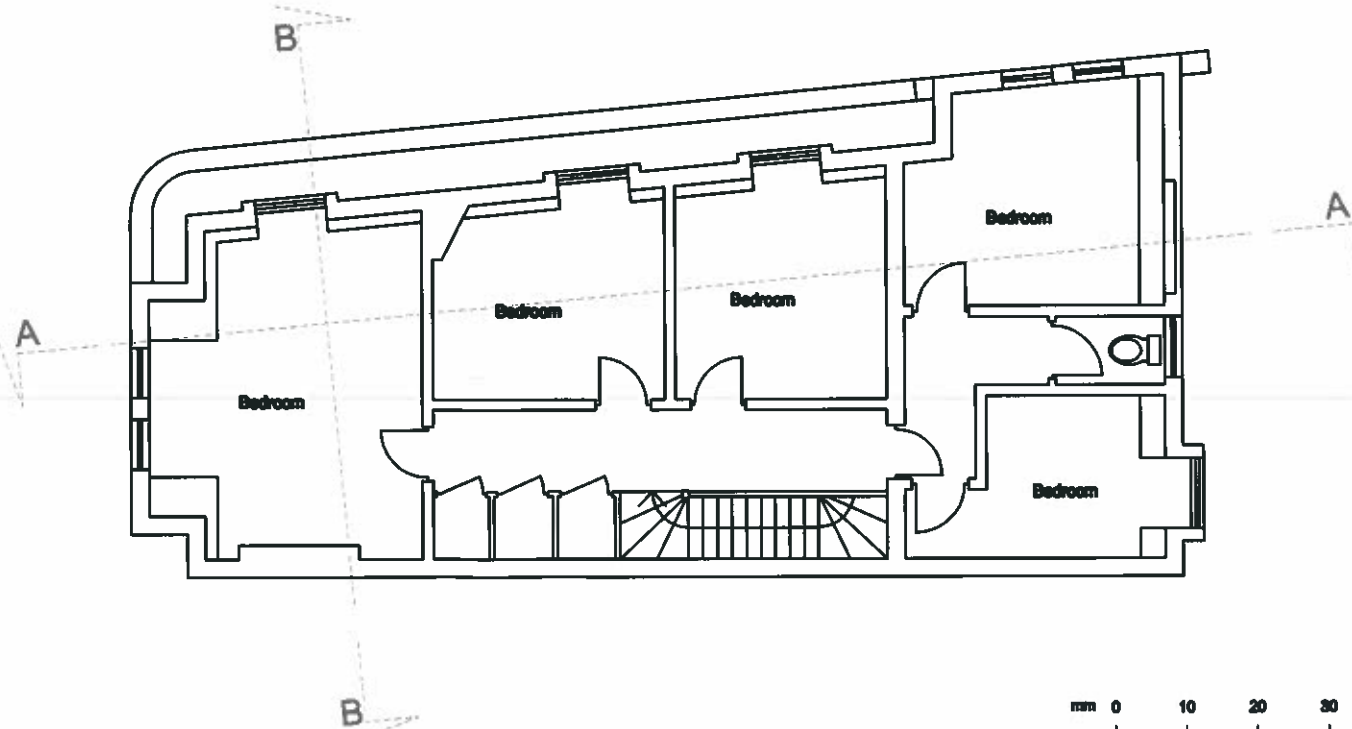
Gross Area = 89.46 m²
= 962.97 sqf



SECOND FLOOR

Gross Area = 88.99 m²
= 957.91 sqf

THIRD FLOOR
Gross Area = 75.65 m²
= 817.54 sqf



Planning Drawings Revisions 02.01.2013 / a - sections lines added	DRAWING TITLE: EXISTING FLOOR PLANS		CLIENT / JOB TITLE: GOLDEN LION 88 ROYAL COLLEGE STREET LONDON NW1		BUILDTECH BUILDING SURVEYORS 28 Shamrock Way, Southgate, London, N14 5RY Tel 020 8368 0605 Fax 020 8361 0677
	Scale: 1:100 @ A3	Date: 08. 2011	Drawn by:	Revision:	