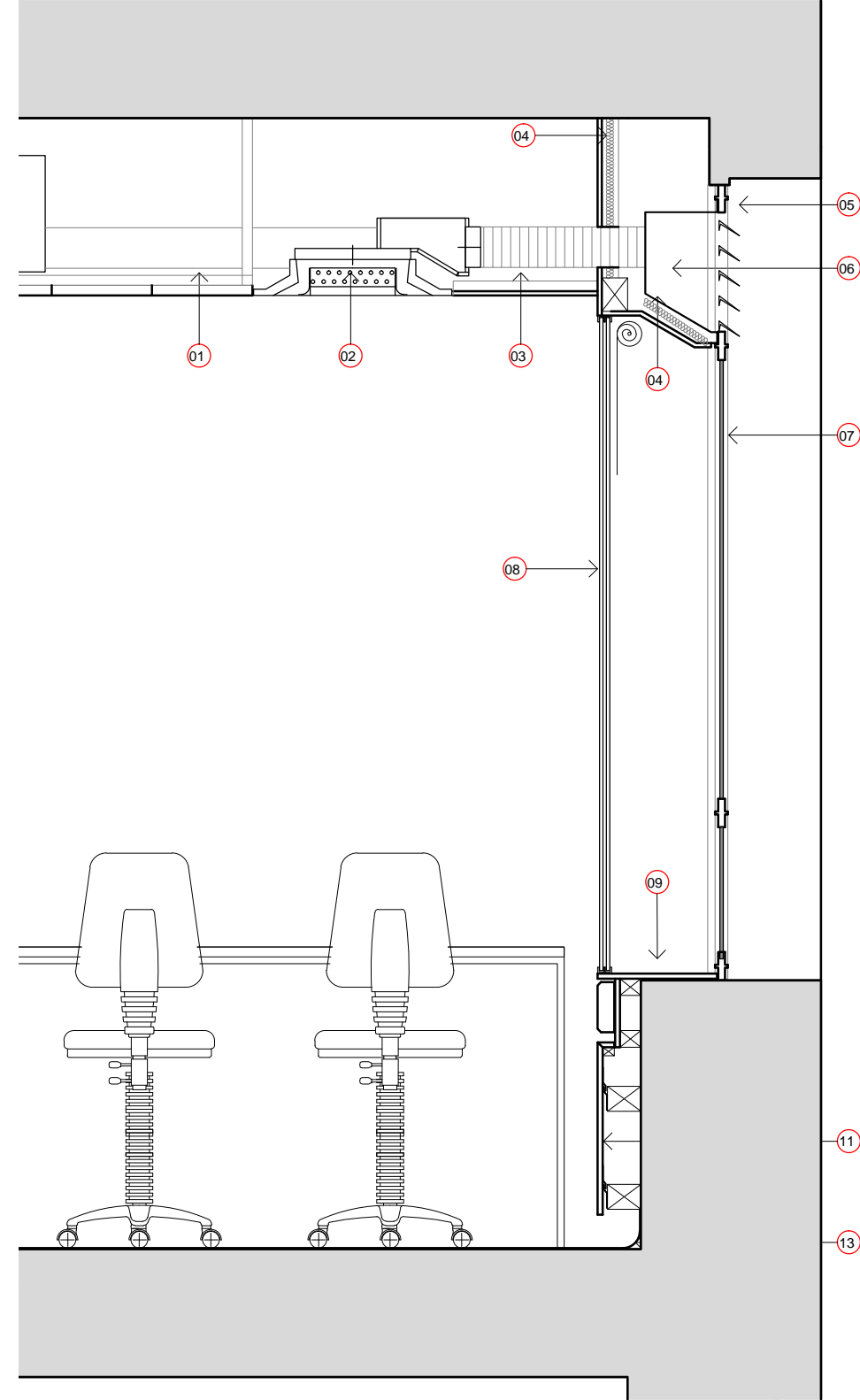
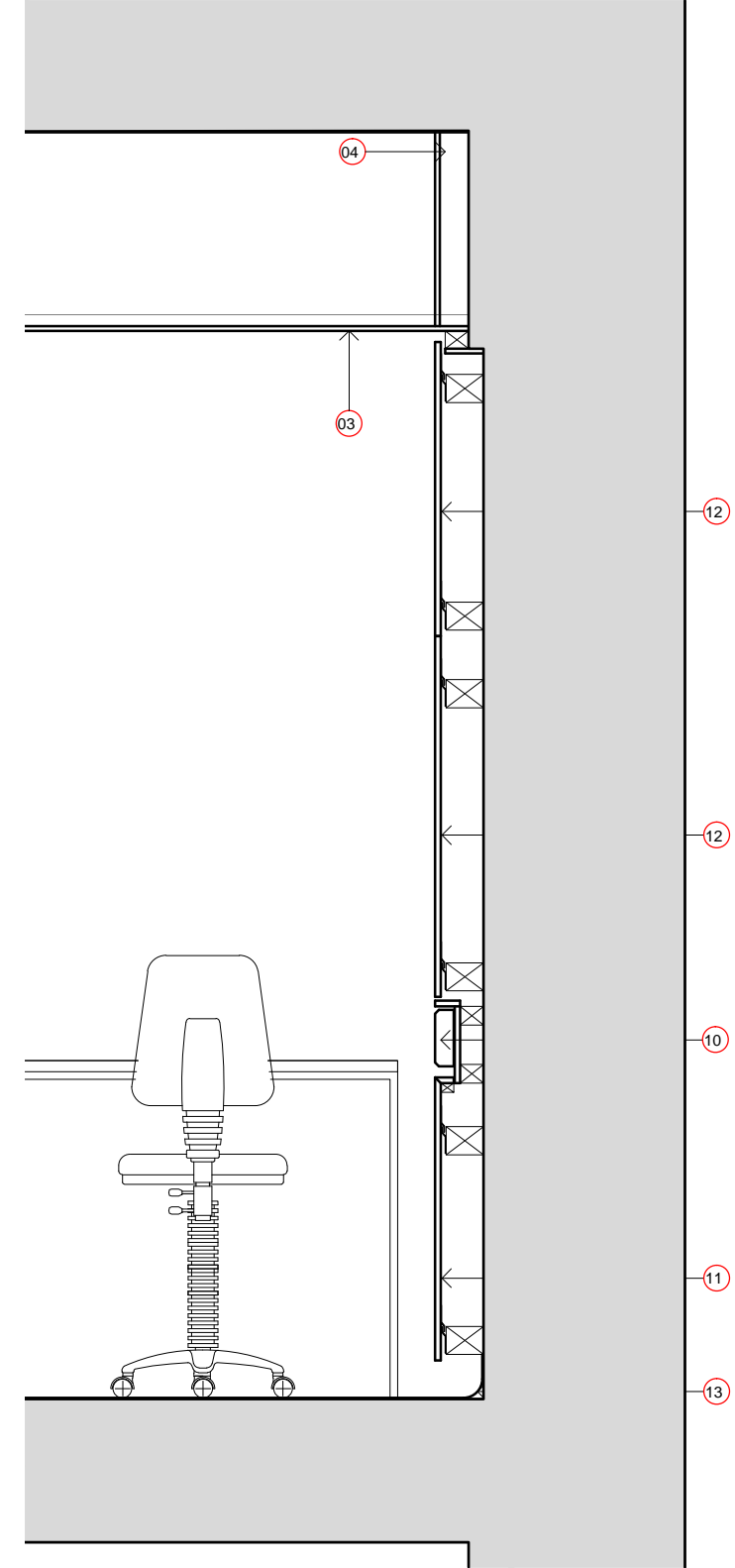


LEGEND:

1. Hinged metal tiles
2. Chilled beam to M&E specifications
3. MF suspended ceiling
4. Insulated wall board
5. PPC aluminium louvres inserted in existing window frame
6. Galvanized zinc air plenum
7. Existing window
8. New frameless secondary glazing with SS ironmongery to Architect's approval
9. Trespa Athlon window cill
10. Dado trunking on Trespa Athlon enclosure
11. lift off Trespa Athlon panel
12. Lift off Trespa Athlon panel with butt joint at mid air
13. Vinyl flooring coved skirting
14. SW timber framnig fro trespa cladding
15. Boxing out to align with existing reveal and edge of glazing surround - painted MDF
16. Planed Softwood
17. Partition construction
18. Existing masonry wall
19. New timber frame, timber type and finishes to match existing



1
DL(2-)110
Generic Section Through Window
Scale 1:20 @ A3



2
DL(2-)110
Generic Section Through Wall
Scale 1:20 @ A3

Status	Description	date	checked by	"copyright and ownership of this drawing is vested in paul murphy architects whose prior written consent is required for its use, reproduction or for publication to any third party. all rights reserved by the law of copyright and by international copyright conventions are reserved to paul murphy architects and may be protected by court proceedings for damages and/or injunctions and costs."
-	FOR PLANNING	2013.01.14		do not scale this drawing all written dimensions are in millimetres any inconsistencies to be reported to the architect immediately © paul murphy architects 2007

PaulMurphyArchitects

The Foundry 7 Glenthorne Mews London W6 0LJ	client UCL
T 020 8846 2520 F 020 8846 2521	project UCL Physics Lab Phase 2
info@paulmurphyarchitects.co.uk www.paulmurphyarchitects.co.uk	drawing SETION WALL CLADDING DETAILS
	stage C-D
	no 1229 DL(2-)110
	scale 1/20 @ A3
	rev -