

A2005
01 **Ground Floor Plan**

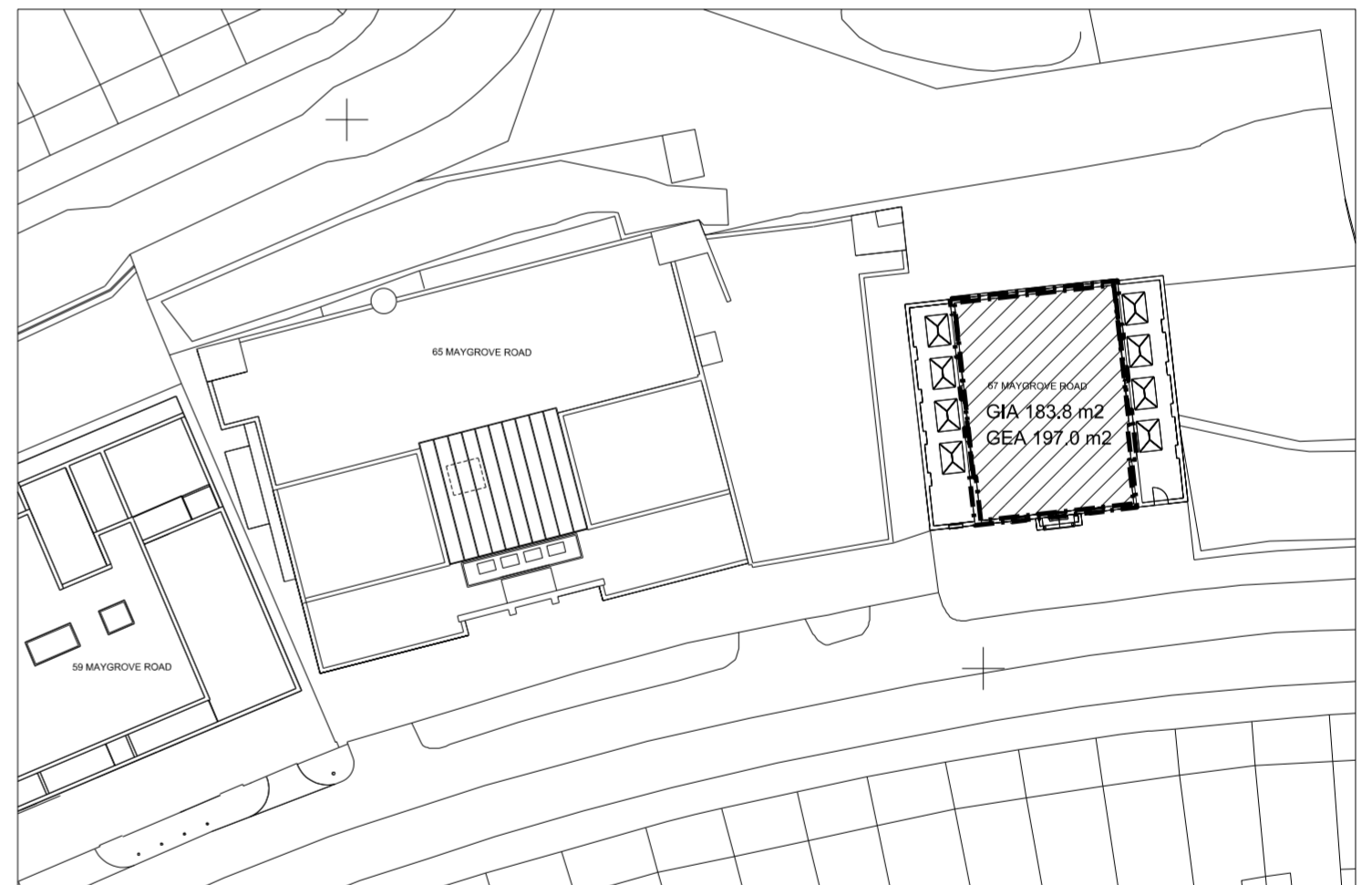
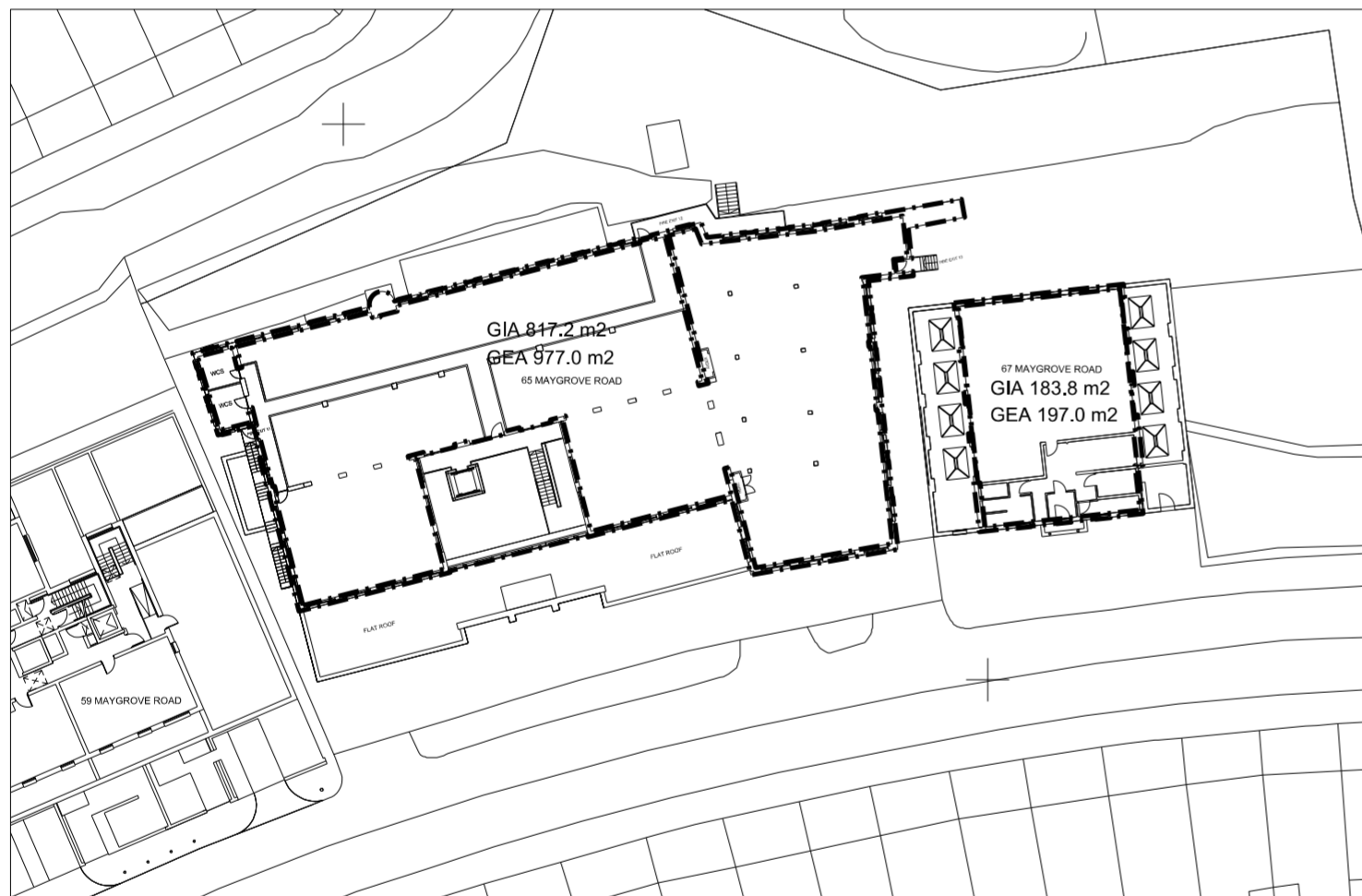
65 Maygrove Road - GIA 1134.9 sqm
- GEA 1189.4 sqm

67 Maygrove Road - GIA 289.8 sqm
- GEA 311.5 sqm

A2005
02 **First Floor Plan**

65 Maygrove Road - GIA 988.0 sqm
- GEA 1134.1 sqm

67 Maygrove Road - GIA 183.8 sqm
- GEA 197.0 sqm



A2005
03 **Second Floor Plan**

65 Maygrove Road - GIA 817.2 sqm
- GEA 977.0 sqm

67 Maygrove Road - GIA 183.8 sqm
- GEA 197.0 sqm

A2005
04 **Third Floor Plan**

65 Maygrove Road -----

67 Maygrove Road - GIA 183.8 sqm
- GEA 197.0 sqm

67 Maygrove Road
GIA Residential area only

▨ = Residential use only

G I A , G E A (R I C S V 6)

Existing 67 Maygrove Road		
Floor	GIA (sqm)	GEA (sqm)
G	289.8 sqm	311.5 sqm
01	183.8 sqm	197.0 sqm
02	183.8 sqm	197.0 sqm
03	183.8 sqm	197.0 sqm
Total	841.2 sqm	902.5 sqm

Existing 65 Maygrove Road		
Floor	GIA (sqm)	GEA (sqm)
G	1134.9 sqm	1189.4 sqm
01	988.0 sqm	1134.1 sqm
02	817.2 sqm	977.0 sqm
03	-	-
Total	2940.1 sqm	3300.5 sqm

G I A , G E A

Work Package	Cost Check	Kitting/Building	Tender	Contract	Construction	Date	Revision	Description	Date	Rev	Revision	Project	Sort Code	Drawing Number	Rev.
						18/12/2012	A	Based under Memo 019				Maygrove Road Housing	AMRH	2005	D
						31/10/2012	B	Based under Memo 025 for Planning Application							
						18/12/2012	C	Based under Memo 040 to RIBA JUNE 10 (2011)							
						02/01/2013	D	Based under Memo 043 to RIBA JUNE 10 (2011)							