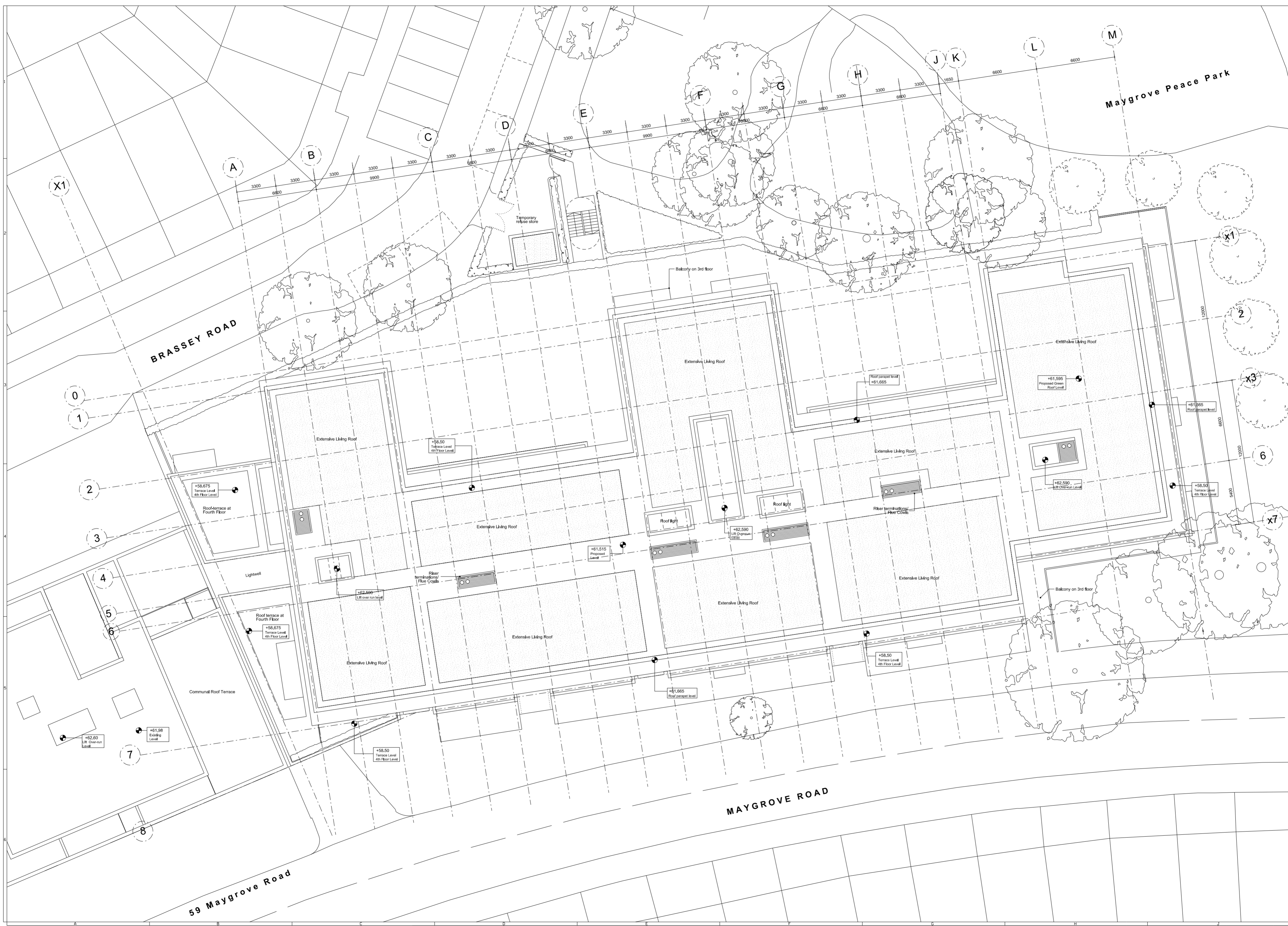
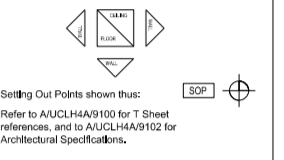


05 - Roof



- General Notes:**
- G1 For file and GA5 setting out refer to AUCUHMA3000
 - G2 All dimensions to be checked on site
 - G3 Any discrepancies between drawings to be reported to the Architect immediately.
 - G4 All Levels are above Ordnance datum (AOD)
 - Existing Levels are shown thus
 - New Levels are shown thus
 - Roofed Living Levels
 - G5 Use Riser dimensions only. Do not scale from drawings. IP IN OCCUPY, ASIC.
 - G6 Refer to Structural Engineers drawings for all structural and services information.
 - G7 For tolerances see the Design Drawings and Specifications.
 - G8 For elements of work subject to Contractor's Design, this drawing is a guide only. The Contractor is responsible for the detailed design and coordination of the installation with the parameters defined in the specification, design drawings, contract terms and contract documents.
 - G9 Room numbers are shown thus
 - G10 Door (D) & Window (W) References are shown thus
 - G11 Clear height is shown thus
 - G12 T Sheet Reference shown thus
 - G13 Finishes are shown thus



Note: for detail of Extensive Living Roof
 call-up please refer to drawing:
 'A_MRH6001 Roof Build up 1-20, OR'

Work Package	Cost Check	Info/Marking	Tender	Contract	Construction	Date	Revision	Description	Date	Rev.	Revision	Date	Rev.	Revision
						11.10.2012	A	Based on Memo 0010 for design team co-ordination						
						15.10.2012	B	Based under Memo 0014 for Condition Reports						
						26.10.2012	C	Based under Memo 0023 for Planning Application						
						30.10.2012	D	Based under Memo 0025 for Planning Application						
						02.11.2012	E	Based for Altering applications memo 026						
						27.11.2012	F	Based under Memo 0036 for Ecology / Planning Issues						
						03.12.2012	G	Based under Memo 0038 Updated Issue to London Borough of Camden						

Project	Subject	Sort Code	Drawing Number	Rev.
Maygrove Road Housing	Proposed Roof Plan GA Plan	AMRH	3105	E

Architects: Hopkins Architects Partnership LLP
 27 Brassey Terrace, London, NW1 6LG
 T: 00 7524 1751 E: mh@hopkins.co.uk

Date: 10.12.2012 Scale: 1:200 at A2