



A4001 East Elevation
CC

Parapet FFL +61.665
Roof FFL +61.515

L04 FFL +58.500

L03 FFL +55.550

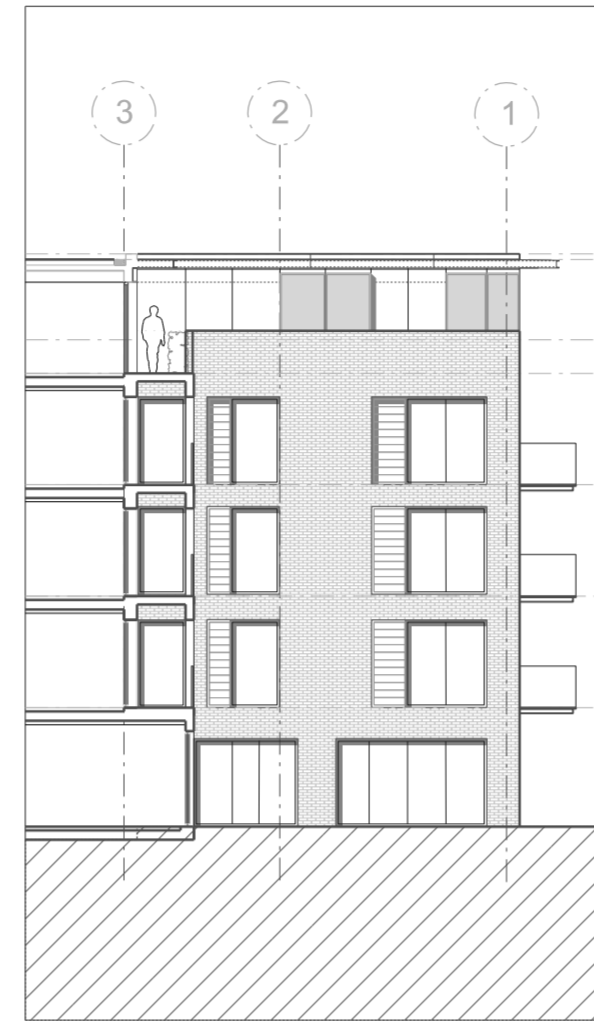
L02 FFL +52.600

L01 FFL +49.650

L00 FFL +46.500

Lower duplex level FFL +43.550

Basement level FFL +42.500



A4001 At GL C looking west
DD

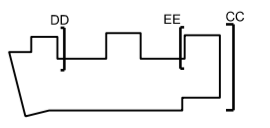


A4001 At GL J looking east
EE

- General Notes:**
- G1 For Site and GIS setting out refer to AMRH000
 - G2 All dimensions to be checked on site
 - G3 Any discrepancies between drawings to be reported to the Architect immediately.
 - G4 All Levels are above Ordnance Datum (AOD)
 - New Levels are shown thus: +20.345
 - Existing Levels are shown thus: EA+20.345
 - Finished Existing Levels: EA+20.345
 - G5 Use Square dimensions only. Do not scale from drawings. If IN CONCRETE, etc.
 - G6 Refer to Structural Engineers drawings for all structural and services information.
 - G7 For references see the Design Drawings and Specifications.
 - G8 For elements of work subject to Contractor's design, this drawing is indicative of the finish & performance requirements only. The Contractor is responsible for the detailed design and coordination of the installation with the parameters defined in the specification, design drawings, contract terms and contract documents.
 - G9 Room numbers are shown thus: 118
 - G10 Door(D) & Window(W) References are shown thus: 118
 - G11 Clear height is shown thus: 2700
 - G12 T-Sheet Reference shown thus: M041
 - G13 Finishes are shown thus: 118
 - G14 Setting Out Points shown thus: 118
 - G15 Refer to AMRH0100 for T-Sheet references, and to AMRH0102 for Architectural Specifications.

MATERIALS KEY

- Brickwork
- Glazing
- Metal Panel
- Timber Panel
- Metal Frame
- Recess



Work Package	Cost Check	Modeling	Tender	Contract	Construction	Date	Revision	Description	Date	Rev.	Revision	Project	Subject	Sort Code	Drawing Number	Rev.
						11.10.2012	A	Issue for design team coordination. Memo 10				Maygrove Road Housing	Proposed East + West Elevations	AMRH	4001	G
						17.10.2012	B	Issued for valuation. Memo 216								
						26.10.2012	C	Issued under memo 021 for Planning Application								
						30.10.2012	G	Issued for Planning Application. Memo 025								
						01.11.2012	D	Revised drawing. Memo 028								
						02.11.2012	E	Revised drawing. Memo 028								
						02.11.2012	E	Revised for Planning Application memo 028								
						07.12.2012	F	Issued under Memo 025. Update issues to London Borough Council								
						08.01.2013	G	Issued under Memo 045. Updated to LBC Comments								

Copyright Hopkin Architects Partnership LLP. Registered in England number OC356976. Registered address: 27 Broadway, Temple London NW1 8LG. Use Figure Dimensions Only. All dimensions to be checked on site. Original Drawing E2x A2

Architects: Hopkin Architects Partnership LLP, 27 Broadway, Temple, London, NW1 8LG, T: 00 7724 1751, E: mail@hopkin.co.uk

Date: 09.01.2013 Scale: 1:100 at A2