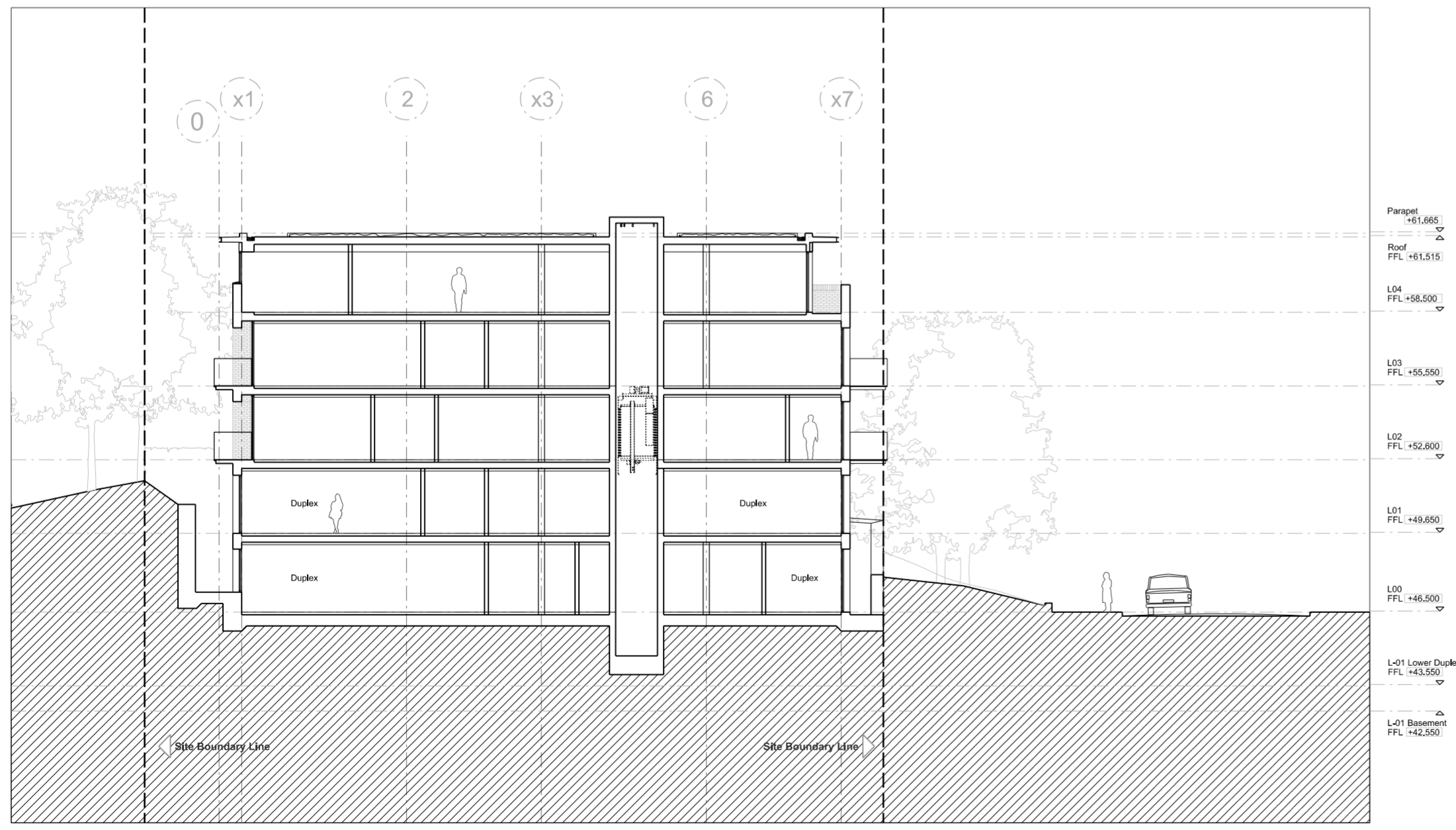
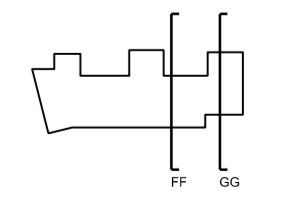


A4013 Section FF
FF



A4013 Section GG
GG

- General Notes:**
- G1 For Site and Grid settings refer to AUCJMA000
 - G2 All dimensions to be checked on site
 - G3 Any discrepancies between drawings to be reported to the Architect immediately.
 - G4 All Levels are above Ordnance Datum (AOD)
 - New Levels are shown thus: -20,345
 - Existing Levels are shown thus: EA-20,345
 - Finished Existing Levels: EA-20,345
 - G5 Use Square dimensions only. Do not scale from drawings. If IN DOUBT, ASK.
 - G6 Refer to Structural Engineers drawings for all structural and services information.
 - G7 For tolerances see the Design Drawings and Specifications.
 - G8 For elements of work subject to Contractor's design, this drawing is indicative of the detail & performance requirements only. The Contractor is responsible for the detailed design and coordination of the installation with the parameters defined in the specification, design drawings, contract terms and contract documents.
 - G9 Room numbers are shown thus: 118
 - G10 Door(D) & Window(W) References are shown thus: 118
 - G11 Clear height is shown thus (Finished floor to finished soffit): 2700
 - G12 T Sheet Reference shown thus: M001
 - G13 Finishes are shown thus: M001
 - G14 Setting Out Points shown thus: SOP
 - G15 Refer to AUCJMA0100 for T Sheet references, and to AUCJMA0102 for Architectural Specifications.



Work Package	Cost Check	Modeling	Tender	Contract	Construction	Date	Revision	Description	Date	Revision	Description	Date	Revision	Description
						07.12.2012	A	Memo 07 - Issued to EBC						
						05.12.2012	B	Issued under Memo 0036. Updated Issue to London Borough of Camden						

Project	Subject	Architects
Maygrove Road Housing	Proposed Section FF, GG Section	Hopkins Architects Partnership LLP 27 Broadway Terrace, London, NW1 8LG T: 002 7724 1751 E: mail@hopkins.co.uk

Sort Code	Drawing Number	Rev.
A/MRH	4013	B

Date: 10.12.2012 Scale: 1:200 at A2