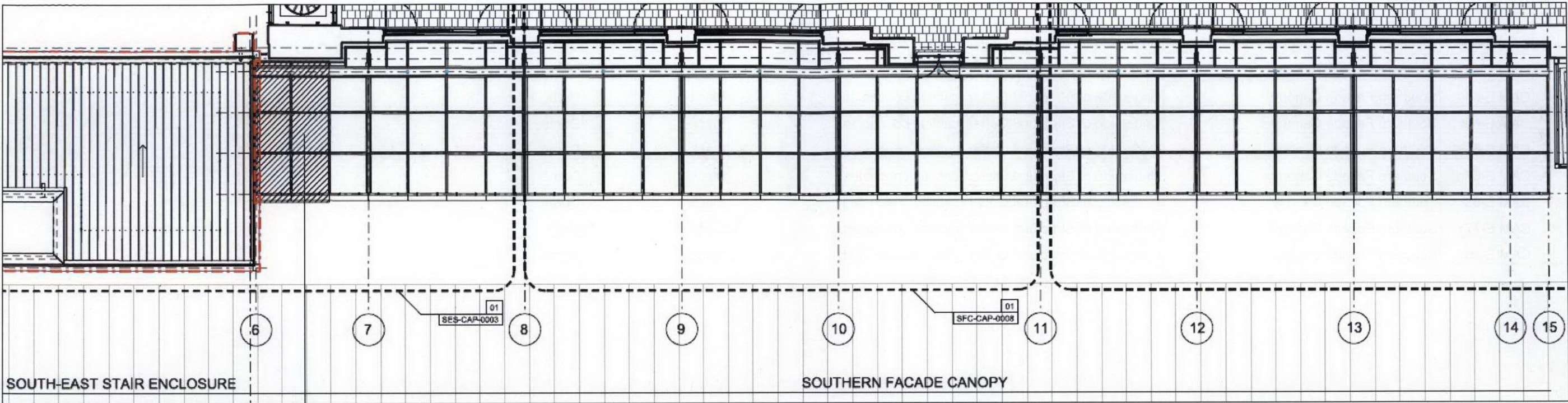
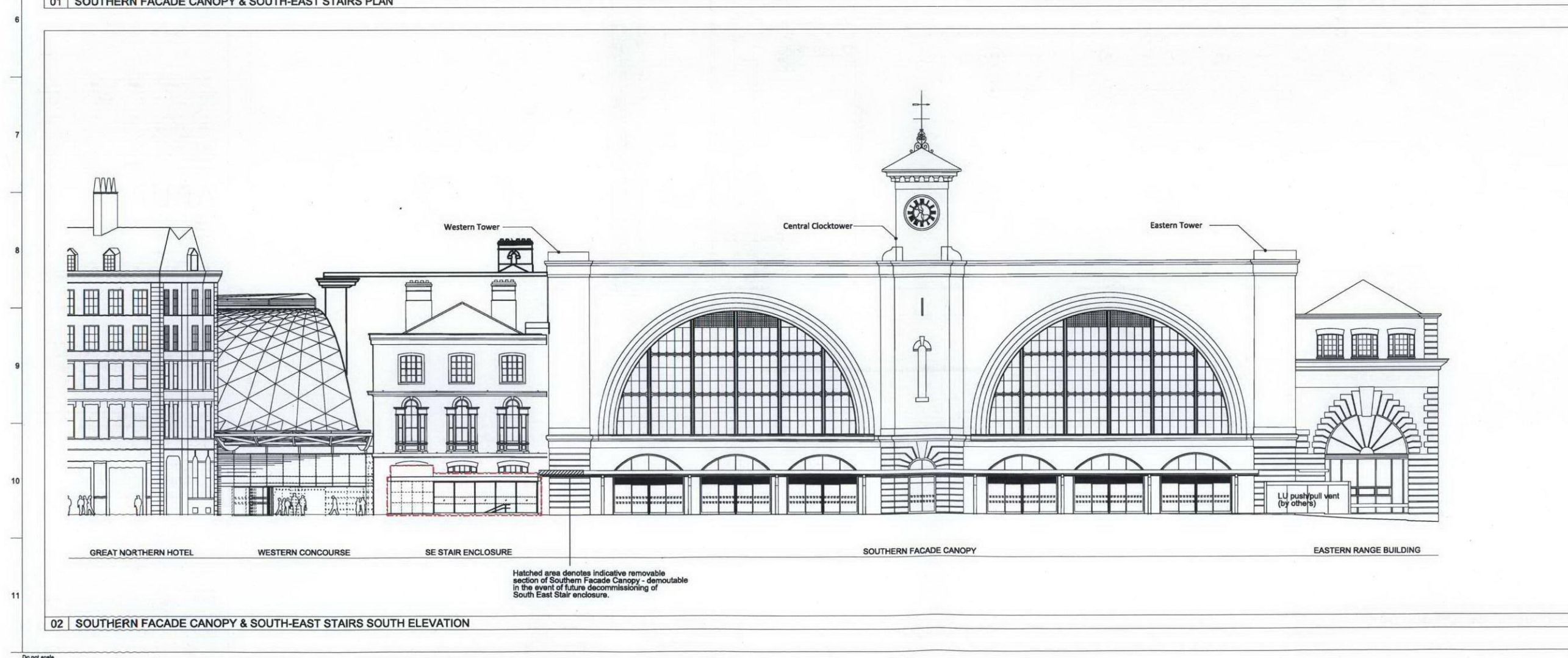
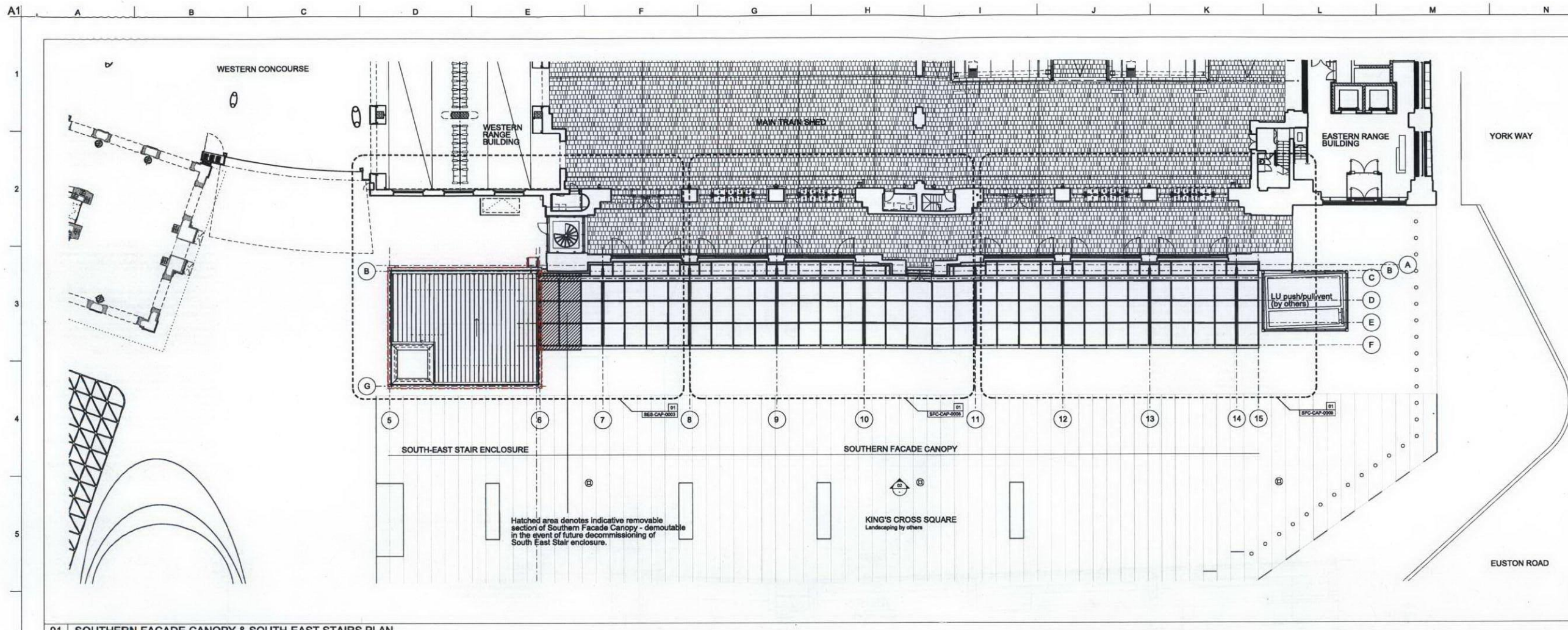


King's Cross Square - Southern Façade Canopy CCTV Submission

Discharge of listed building condition 8 (ref: 2006/3394/L) for the King's Cross Square element of the programme

The locations of the 9 CCTV cameras are highlighted in cyan on the extract from drawing ENG-DWG-OAP-SES-CAP-0001 below which accompanies this submission.





Notes

Do not scale from this drawing. All dimensions are to be checked on site and any discrepancies noted in writing to the Employer's Representative. All dimensions are in millimetres unless noted otherwise.

Where there appears to be ambiguity between the drawings and other information, the Contractor shall seek the advice of the Employer's Representative for clarification.

For key to numbered annotation, please refer Section A99 of Southern Facade Canopy and South East Stair Specification ENG-SPE-GS-JMP-KX7-CBSA-1000

Drawings to be read in conjunction with the Architectural Specification and other relevant information, including the schedules and Engineer's documents. For individual repair locations and scope, refer to Section C90 of the Architectural Specification.

For size and setting out of steel members refer to structure engineer's drawings.

Half tone line work shows scope by others. Refer to detail drawings for further scope definition.

London Underground Demise

06	01/06/12	JMP	PR	HA
APPROVED FOR CONSTRUCTION				
05	20/02/12	JMP	JW	HA
Tender Issue Incorporating NR comments				
04	18/12/11	JMP	PV	SG
Tender Issue for NRT approval				
03	02/12/11	JMP	PV	HA
Tender Issue for NRT approval				
02	09/08/11	JMP	PV	HA
For Grp 4 Approval				

ARUP

13 Fitzroy Street
London W1T 4BQ
Tel: +44 (0)20 7536 1531 Fax: +44 (0)20 7590 3624
www.arup.com

John McAslan + Partners

7-9 Wilton Road London NW1 3ER
Tel: +44 (0)20 7313 8000
Fax: +44 (0)20 7313 8001
www.mcaslan.co.uk

☐ Architect
☐ Landscape Architect

Client

Network Rail

Job Title

King's Cross Station
Redevelopment Programme
Package 7

Drawing Title

Southern Facade Canopy
& South-East Stairs
Plan & South Elevation

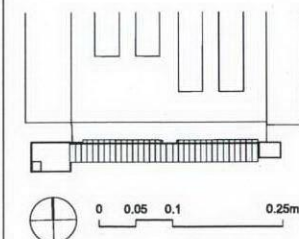
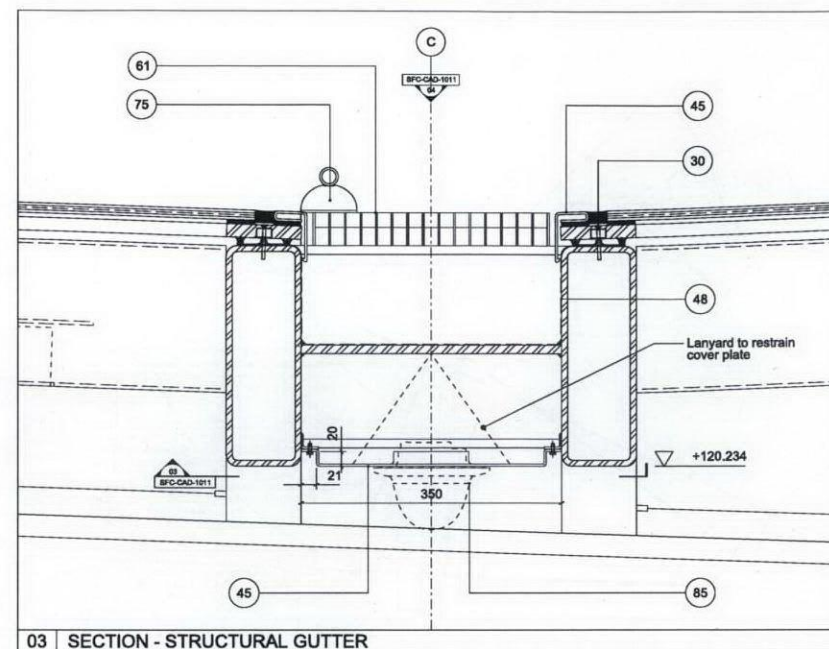
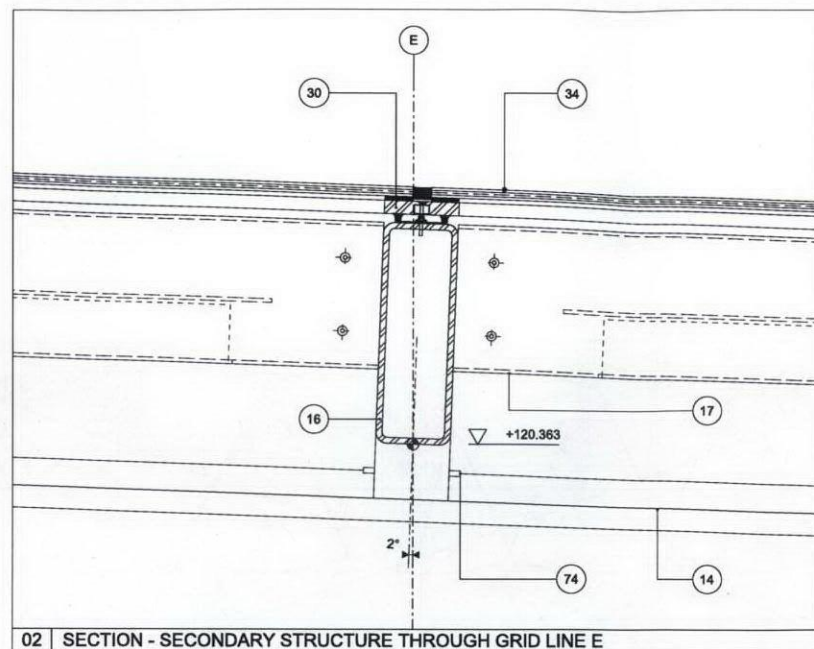
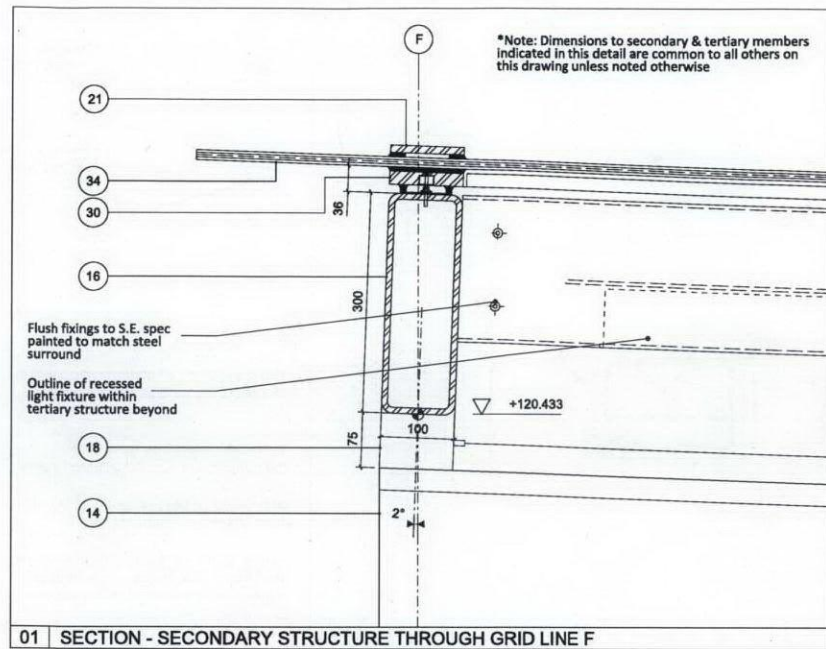
Scale at A1 1:200 @ A1

CCMS No

Drawing Status

GRIP 5, Approved For Construction

OAP Job No	Drawing No	Rev.
1327	SES-CAP-0001	06



Notes

Do not scale from this drawing. All dimensions are to be checked on site and any discrepancies noted in writing to the Employer's Representative. All dimensions are in millimetres unless noted otherwise.

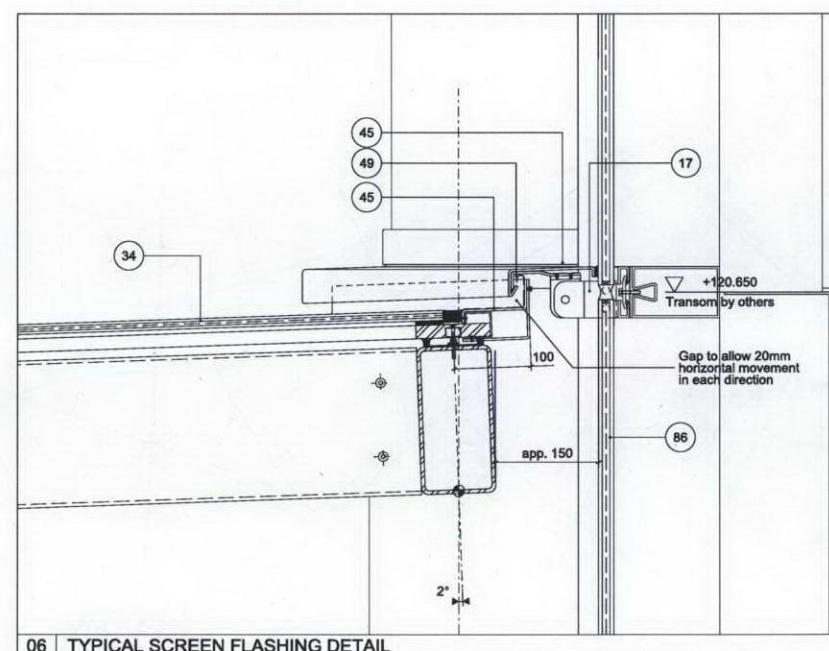
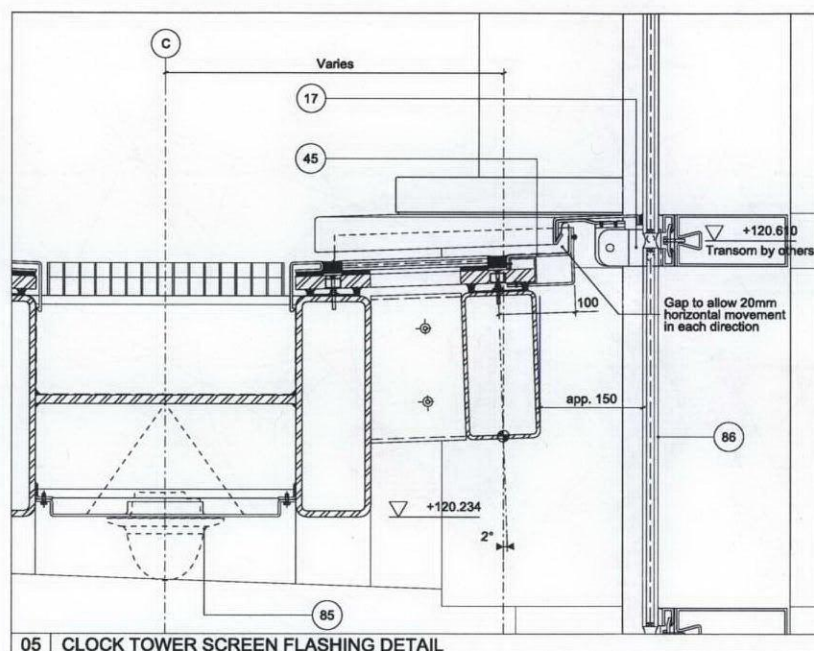
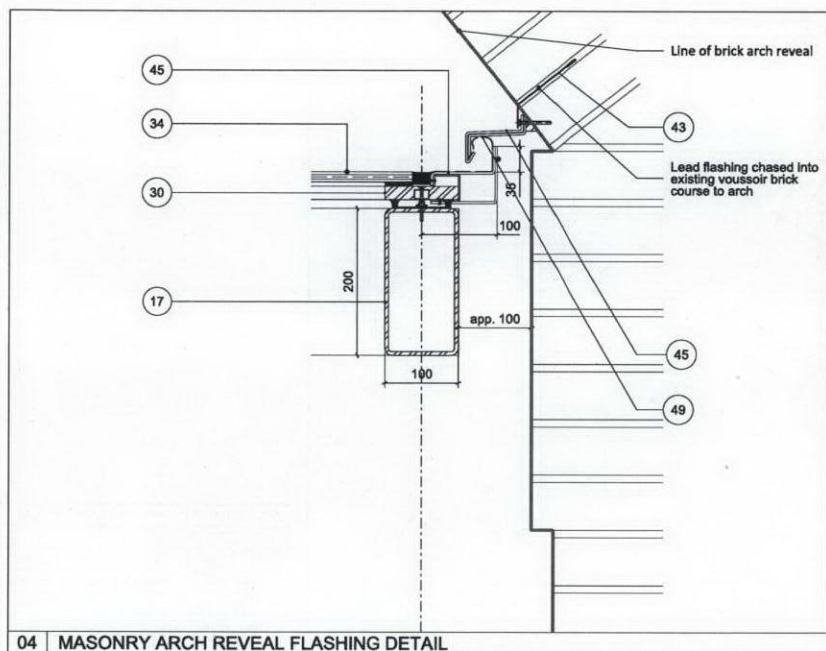
Where there appears to be ambiguity between the drawings and other information, the Contractor shall seek the advice of the Employer's Representative for clarification.

For key to numbered annotation, please refer Section A99 of Southern Facade Canopy and South East Stair Specification ENG-SPE-GS-JMP-KX7-CBSA-1000

Drawings to be read in conjunction with the Architectural Specification and other relevant information, including the schedules and Engineer's documents. For individual repair locations and scope, refer to Section C90 of the Architectural Specification.

For size and setting out of steel members refer to structure engineer's drawings.

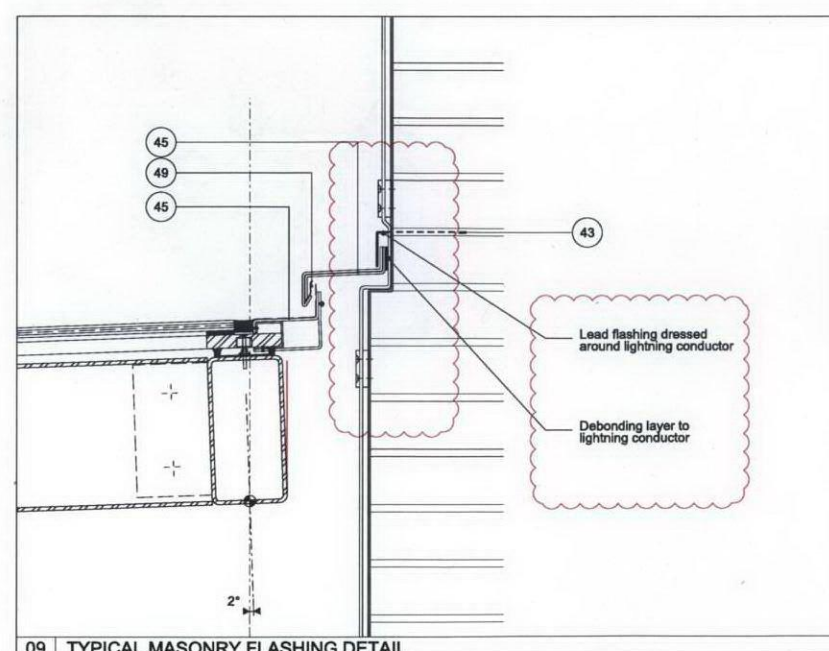
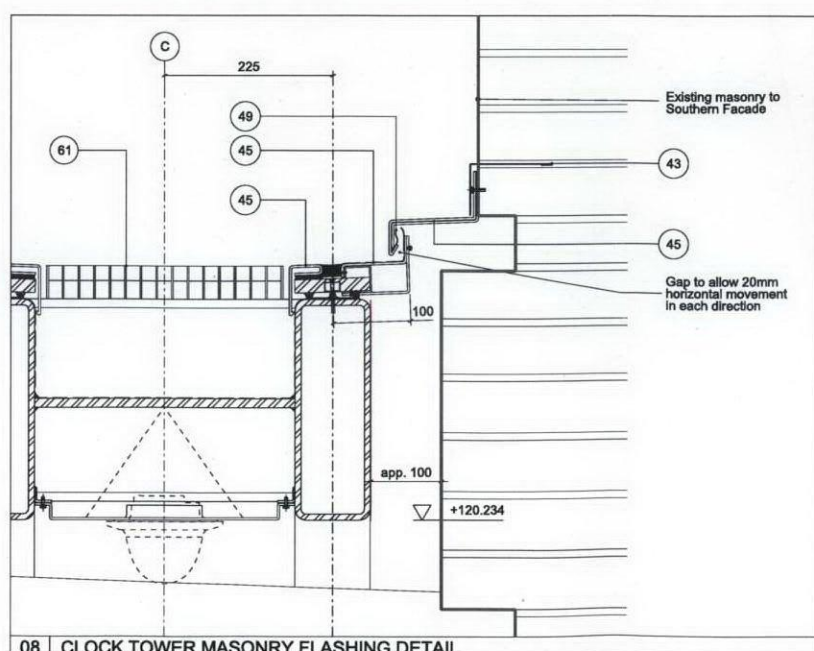
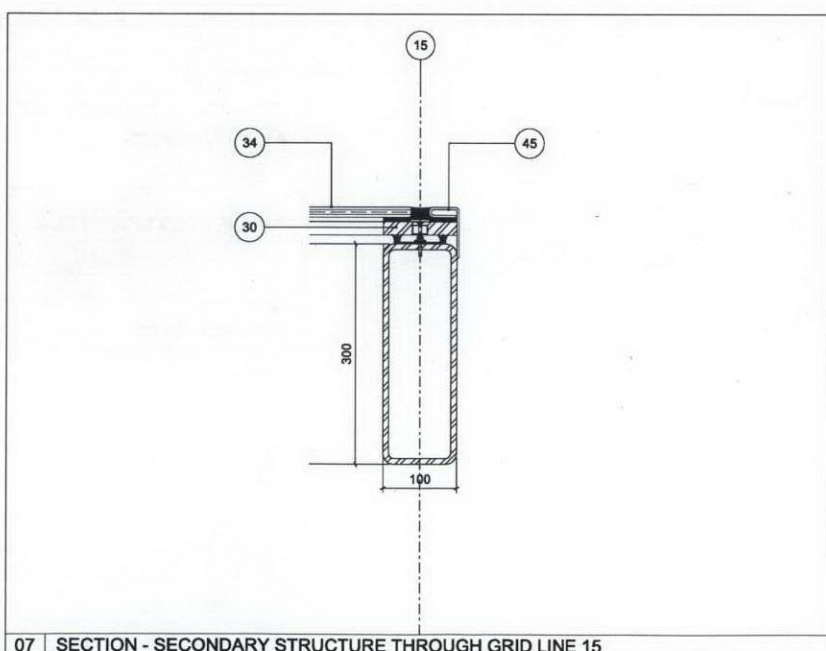
Half tone line work shows scope by others. Refer to detail drawings for further scope definition.



*Position of tertiary canopy members on gridline A

100mm clear between face of canopy tertiary member & masonry

150mm clear between face of canopy tertiary member & glazed screen



02	01/06/12	JMP	PR	HA
APPROVED FOR CONSTRUCTION				
01	20/02/12	JMP	JW	HA
Tender Issue Incorporating NR comments				
00	02/12/11	JMP	PV	HA
Tender Issue for NR approval				

ARUP

13 Finsbury Street
London EC2A 3DF
Tel: +44 (0)20 7536 1031 Fax: +44 (0)20 7580 3924
www.arup.com

John McAslan + Partners

7-9 Wilton Road London W1 3ER
Tel: +44 (0)20 7536 1031 Fax: +44 (0)20 7580 3924
www.mcaslan.co.uk

Architect
Landscape Architect

Client

Network Rail

Job Title

**King's Cross Station
Redevelopment Programme
Package 7**

Drawing Title

Southern Facade Canopy Detail 1

Scale at A1: 1:5 @A1

CCMS No

Drawing Status: GRIP 5, Approved For Construction

QAP Job No: 1327 Drawing No: SFC-CAD-1010 Rev: 02