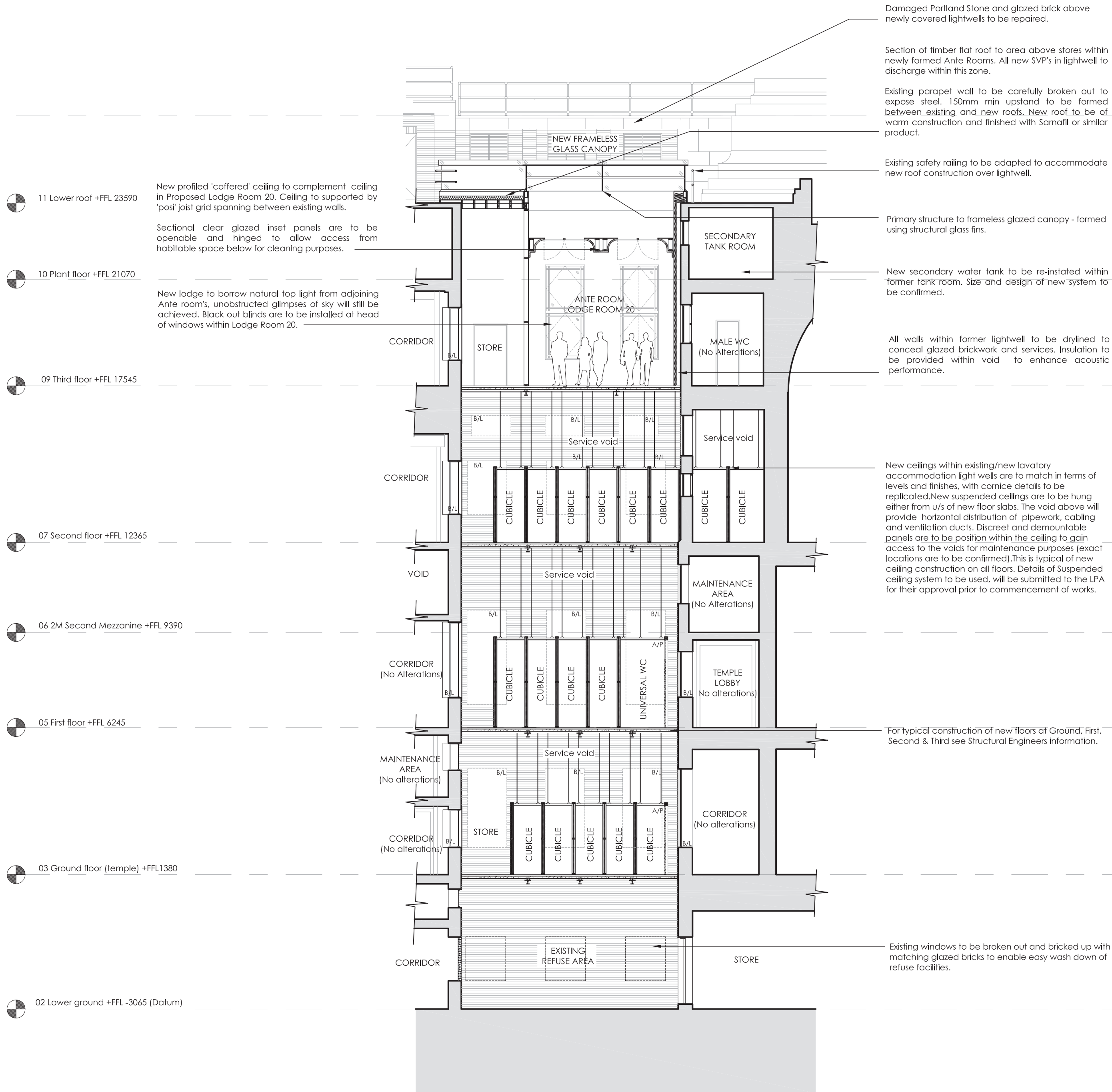
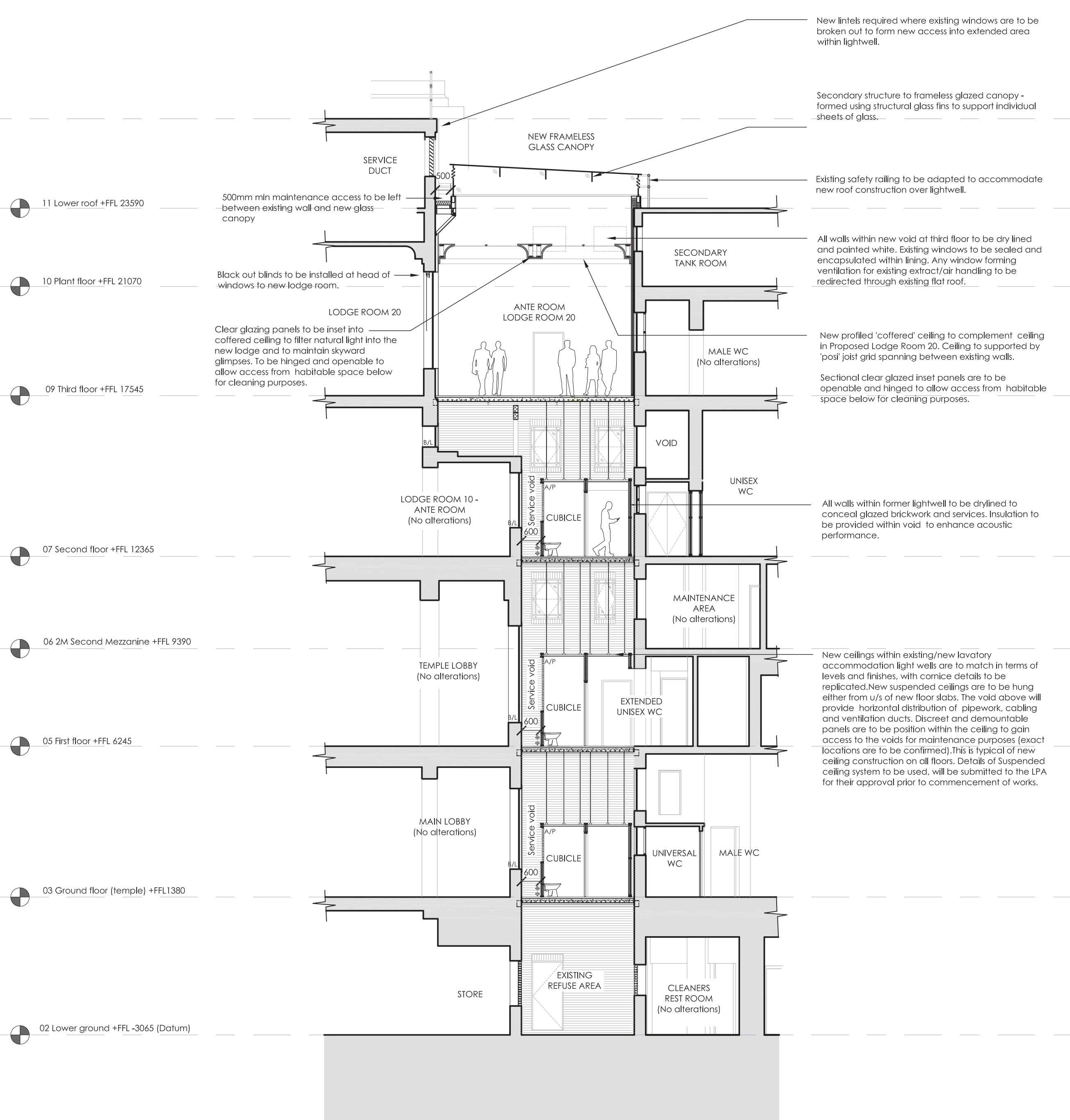


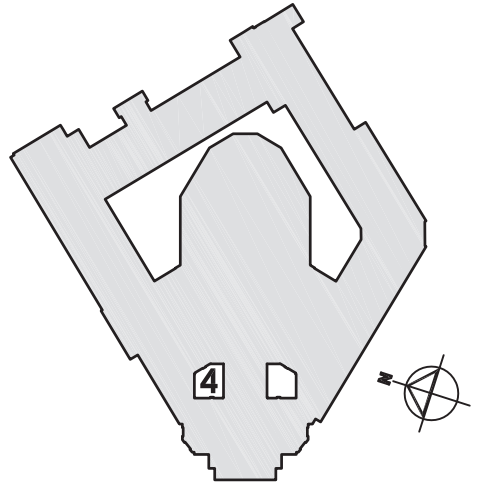
01 APPROVED SECTION A-A THROUGH LIGHTWELL 4- Typical of both lightwells  
Scale 1:100



02 APPROVED SECTION B-B THROUGH LIGHTWELL 4- Typical of both lightwells  
Scale 1:100



- General Notes:-
1. All drawings remain the copyright of MRDA and cannot be reproduced without approval.
  2. This drawing must not be scaled.
  3. Documents/drawings transferred by electronic mail are not to be altered without the consent of MRDA.
  4. Dimensional/level accuracy only applies to the written notation.
  5. The drawings/information issued by MRDA are to be cross referenced where necessary with other relevant Consultants information.
  6. If in doubt ask!



KEY:

A/P	Dismountable access panel to access back lit units.
B/L	Indicative of windows to be backlit.

P2	06.02.13 Planning Issue Previously approved drawings from application 2012/3548/P.	CB	RD
P1	15.06.12 Planning Issue	CB	RD
Rev:	Date:	Dr:	Ch:

PLANNING

Job No.	1510.01	Date.	06.12
Dwg No.	PL.060	Rev.	P2
Scale.	1:100 @A1	Drawn by.	CB
		Checked by.	RD

Client / Organisation.  
Freemasons  
Project.  
Freemasons Hall, Great Queen Street, London, WC2B 5AZ  
Dwg title.  
APPROVED Sections - Lightwell 4  
Typical Sections A-A & B-B



3 King Street Cloisters, Clifton Walk, Hammersmith, London, W6 0GY  
T: 02087 483755  
www.mrda.co.uk  
F: 02087 483756  
office@mrda.co.uk