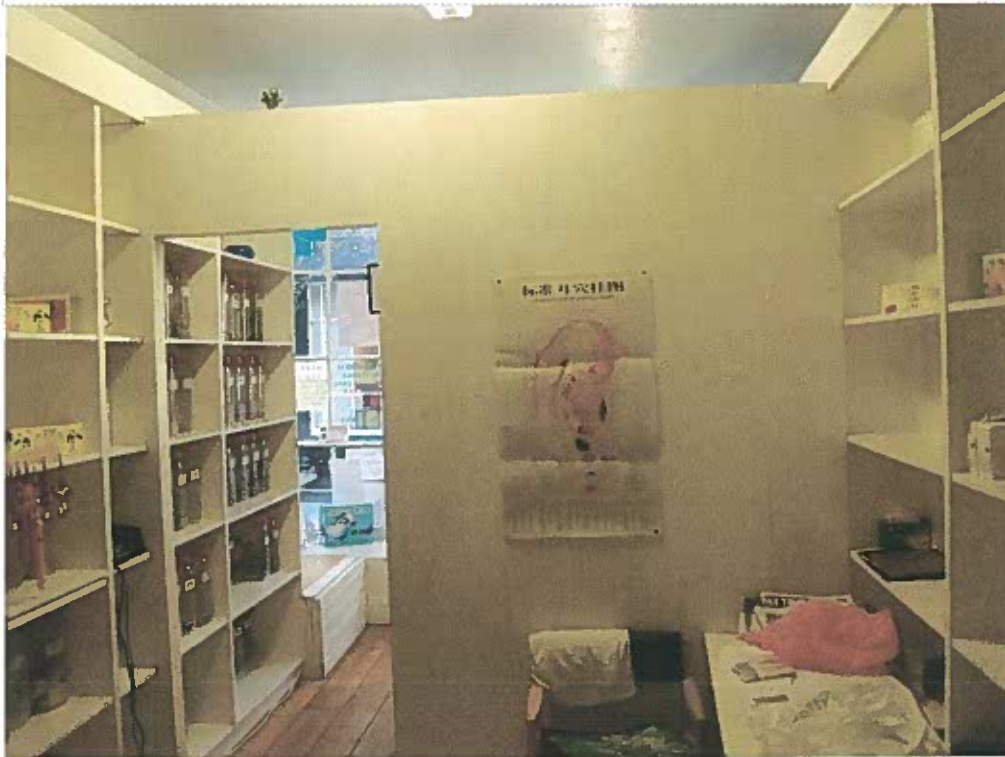


PP-02433575

Comment [Idc4]:



Comment [Idc5]:

NO12 The ground floor partition looking out towards the front.

We will remove all
fixtures and fittings on
the ground floor.

PP 02433575

This is NO 10
which shows how
we want NO 12
once fixtures and
fittings are removed.
from the ground
floor.



PP 02433575

Comment [Idc1]:



No 12 This is how it should look after all current fixtures and fittings are removed on the ground floor.

PP 02433575



NO. 12

This is the basement at the front which has been partitioned off into 3 small treatment rooms.

Comment [Idc9]:

Partitions are not attached to the ceiling and will be removed together with any other fixtures and fittings.

This is
NO 10
showing
how we
want
the
basement
once all
fixtures
and
fittings
are
removed



PP 02433575



NO 12 Kitchen fixtures will be replaced by us.

Comment [kdc7]:

PP 02433575



Comment [Idc8]:

NO 12

This is a water meter situated above the kitchen window and which our surveyor/builder will relocate or box in when the new kitchen goes in together with the central heating.