

FOR PLANNING

Platt's Lane

Kidderpore Avenue

Finchley Road

BLOCK K

BLOCK L

BLOCK M

BLOCK A1

BLOCK A2

BLOCK B

BLOCK C

BLOCK J

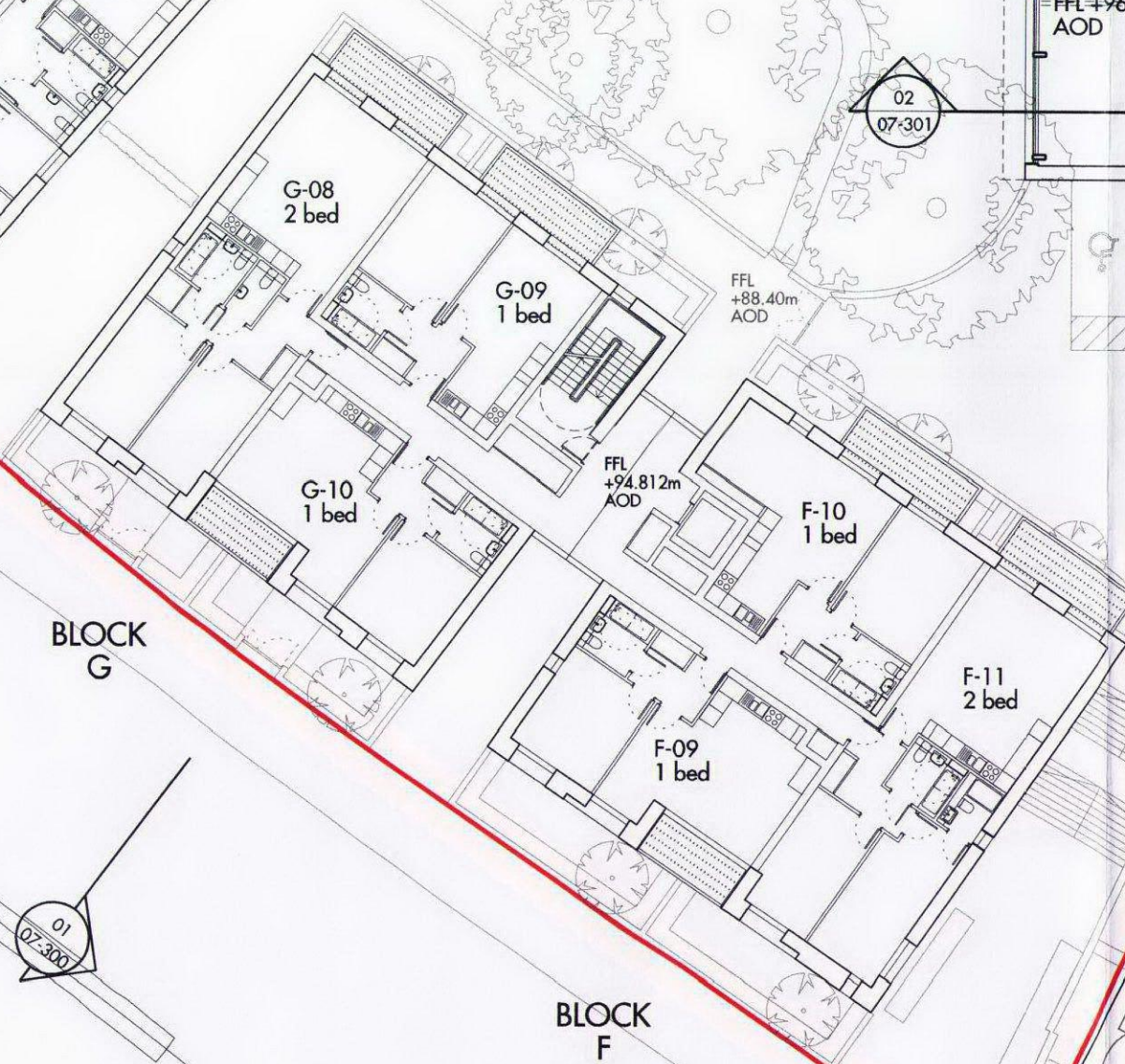
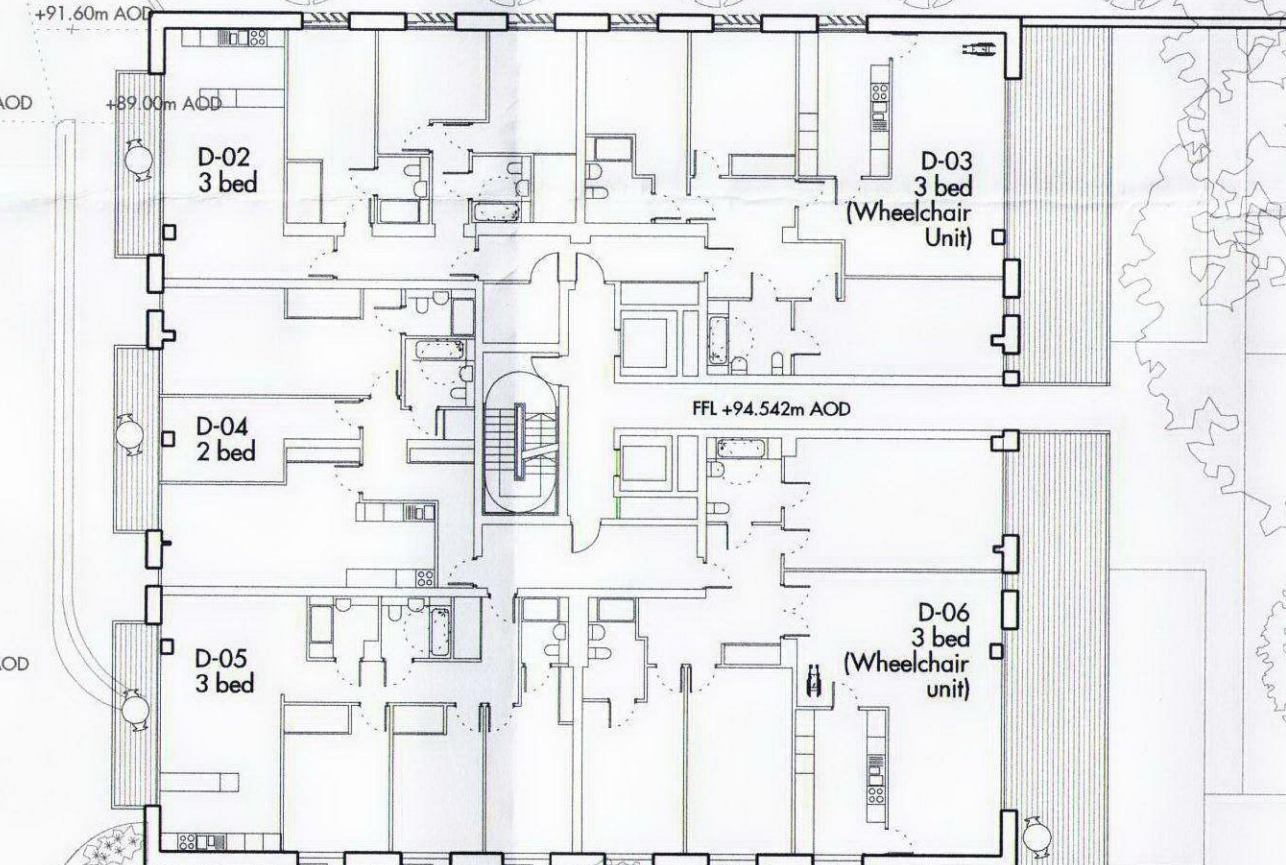
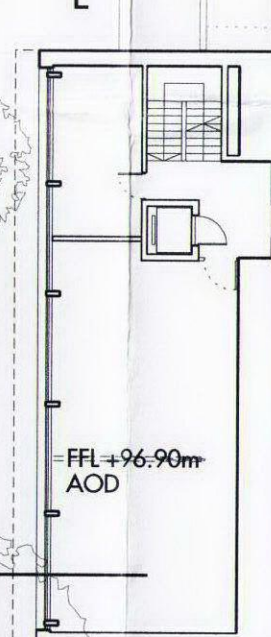
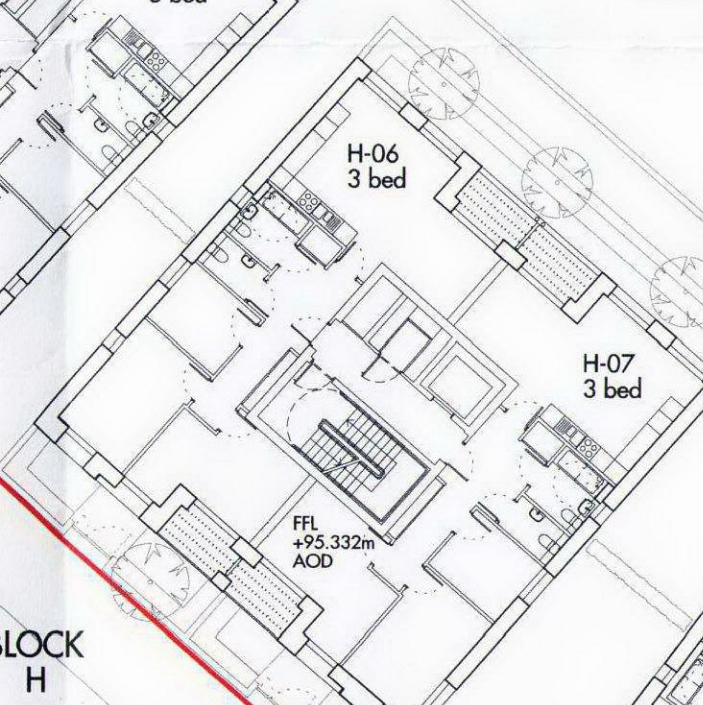
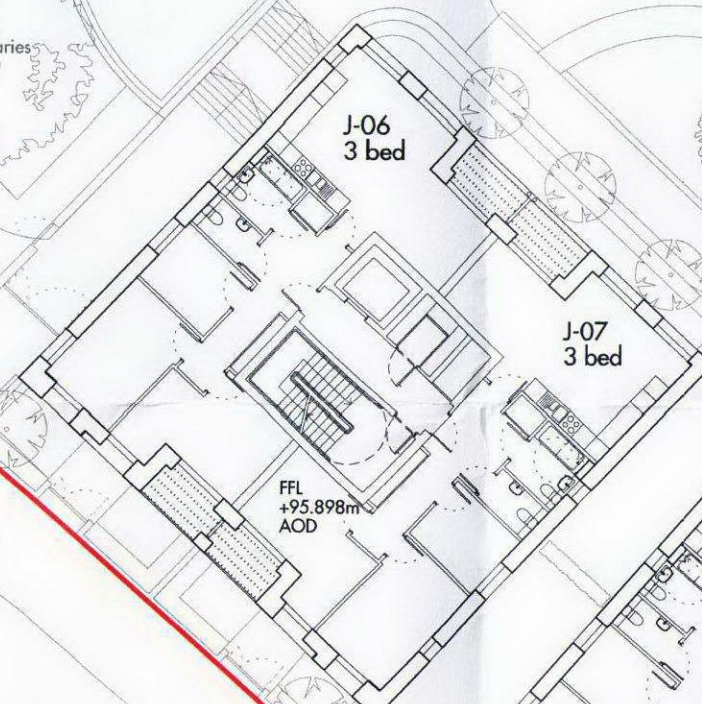
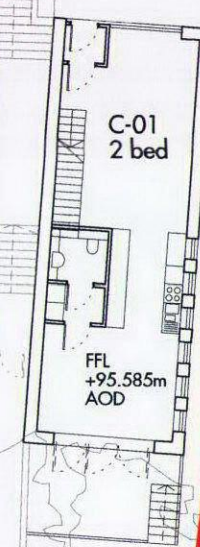
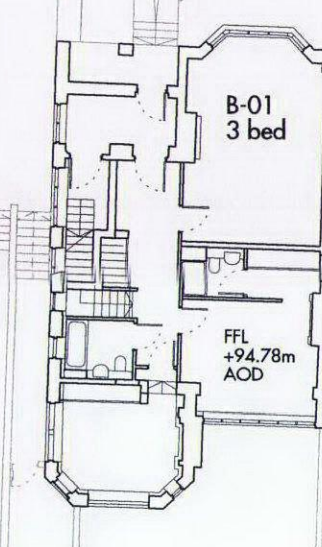
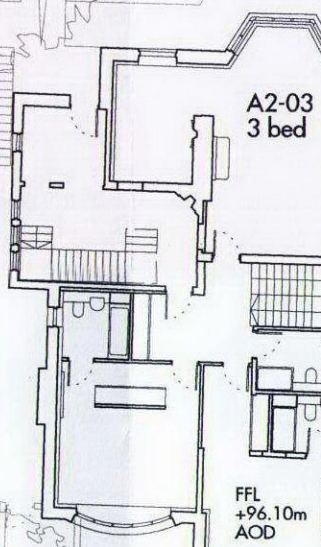
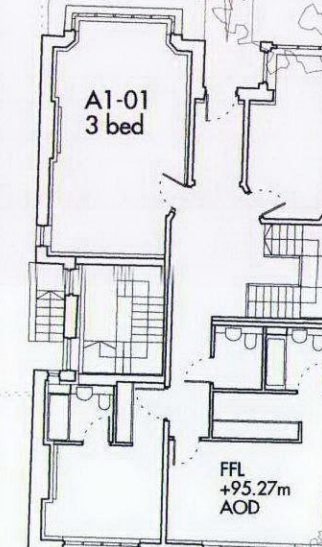
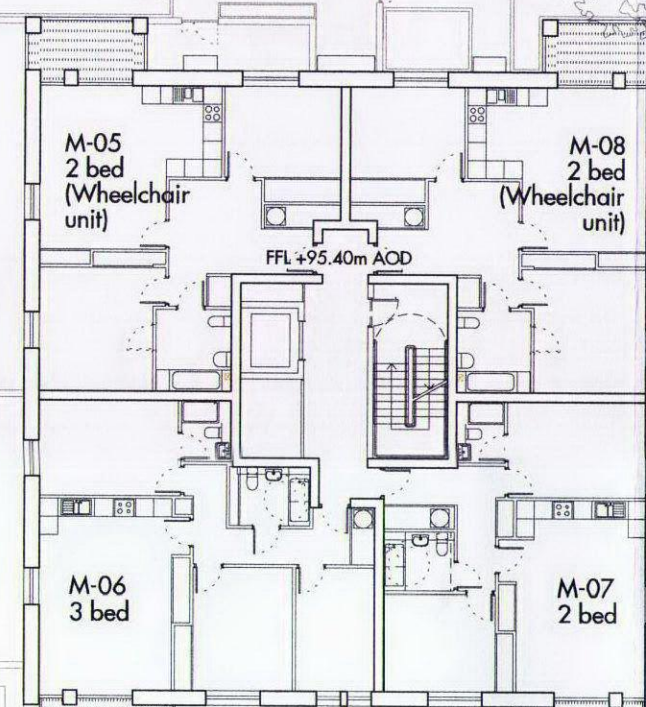
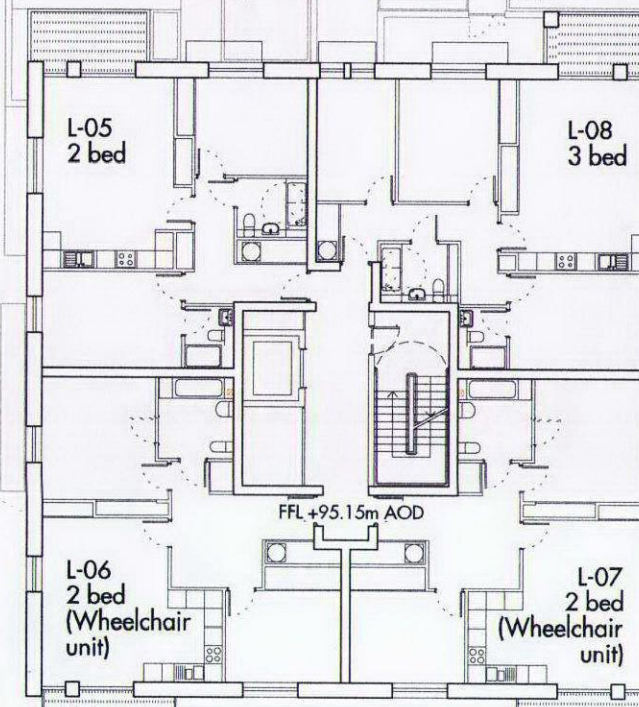
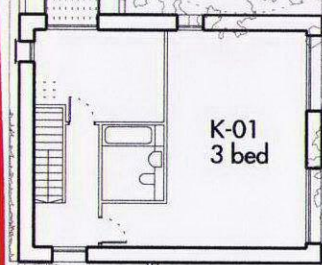
BLOCK H

BLOCK E

BLOCK D

BLOCK G

BLOCK F

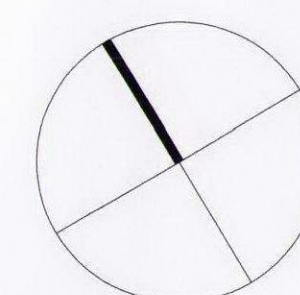


0m 10m



Do not scale from this drawing. Use figured dimensions only. Figured dimensions are in millimetres. All levels are in metres. All dimensions and levels shall be verified on site before proceeding with works. Detailed site survey to be carried out to verify positions and level relationships with site features and ordnance survey. The architect must be notified of any discrepancy. Where building components are described in the specification as contractor designed, "construction" information relating to those components on this drawing represents design intent only.

REV	DATE	DESCRIPTION	CMD
P1	31-01-13	Planning Submission	OK



Allies and Morrison
85 Southwark Street
London SE1 0HX
020 7921 0100
020 7921 0101
info@alliesandmorrison.co.uk
A&M JOB NO: 809

KIDDERPORE AVENUE, LONDON
PROPOSED LEVEL 00 PLAN
809_01_07_103

DATE: January 2013
SCALE: 1:250 @A1 1:500 @A3

P1

Revision