

APPENDIX B

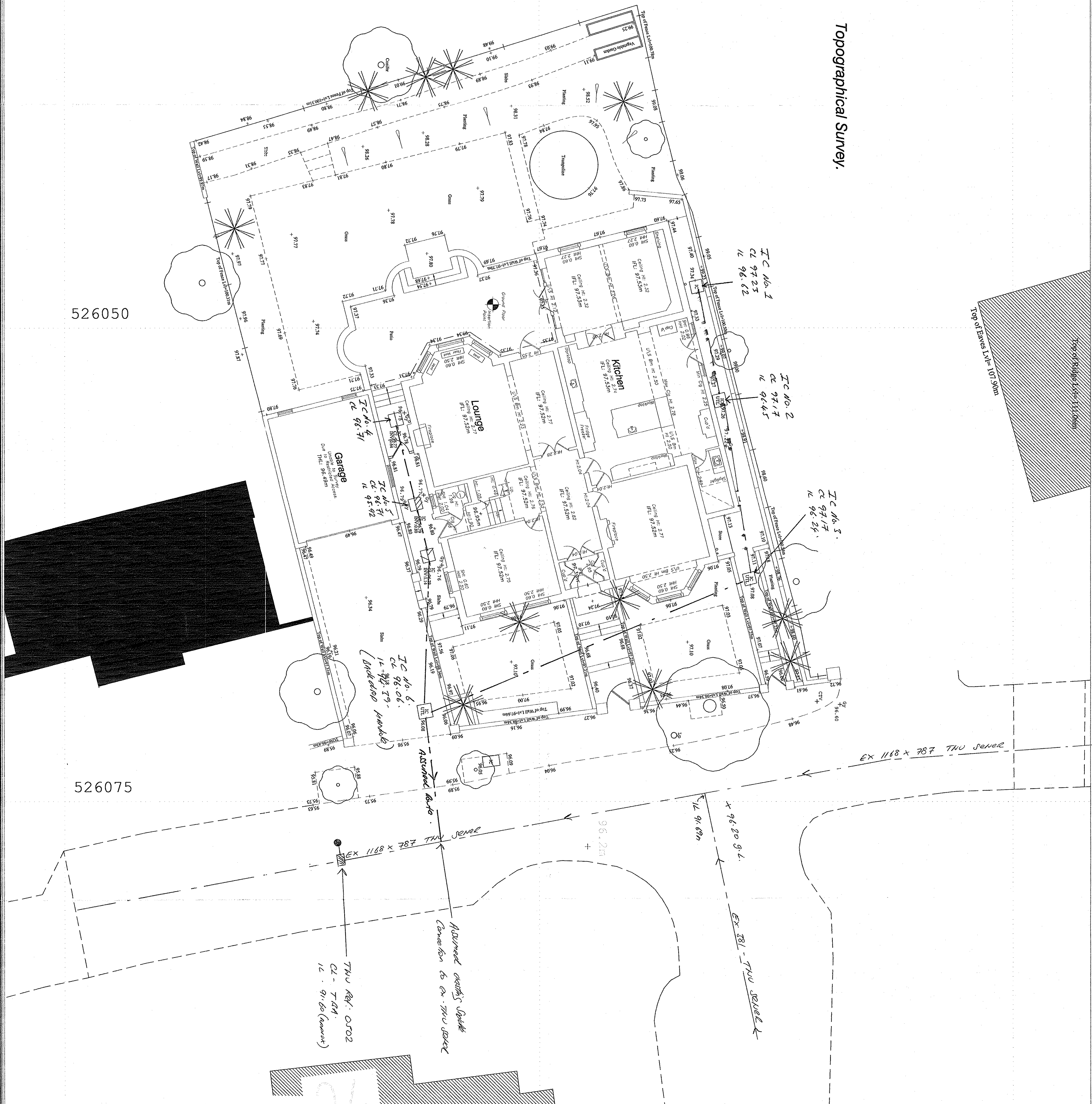
DRAINAGE STRATEGY

526025

185600

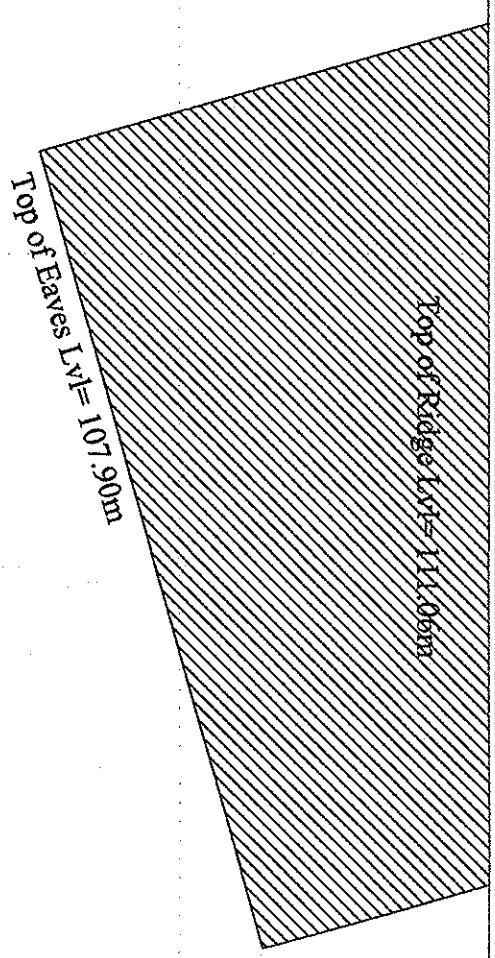
185625

Topographical Survey.



526050

526075



Station Information:

Station	easting (m)	northing (m)	Level (m)
81	457002.343	448950.825	42.748
82	457001.728	448947.087	42.678
83			
84			
85			
86			
87			
88			
89			

Building Survey Legend:

SH 1.00	Submerged
SH 2.12	Shaded
SL 51.03m	Spot Level
SL 52.82m	Spot Level
SL 53.00m	Spot Level
SL 53.10m	Spot Level
SL 53.20m	Spot Level
SL 53.30m	Spot Level
SL 53.40m	Spot Level
SL 53.50m	Spot Level
SL 53.60m	Spot Level
SL 53.70m	Spot Level
SL 53.80m	Spot Level
SL 53.90m	Spot Level
SL 54.00m	Spot Level
SL 54.10m	Spot Level
SL 54.20m	Spot Level
SL 54.30m	Spot Level
SL 54.40m	Spot Level
SL 54.50m	Spot Level
SL 54.60m	Spot Level
SL 54.70m	Spot Level
SL 54.80m	Spot Level
SL 54.90m	Spot Level
SL 55.00m	Spot Level
SL 55.10m	Spot Level
SL 55.20m	Spot Level
SL 55.30m	Spot Level
SL 55.40m	Spot Level
SL 55.50m	Spot Level
SL 55.60m	Spot Level
SL 55.70m	Spot Level
SL 55.80m	Spot Level
SL 55.90m	Spot Level
SL 56.00m	Spot Level

Topographical Legend:

1	100000	Contour Interval
2	100000	Contour Interval
3	100000	Contour Interval
4	100000	Contour Interval
5	100000	Contour Interval
6	100000	Contour Interval
7	100000	Contour Interval
8	100000	Contour Interval
9	100000	Contour Interval
10	100000	Contour Interval
11	100000	Contour Interval
12	100000	Contour Interval
13	100000	Contour Interval
14	100000	Contour Interval
15	100000	Contour Interval
16	100000	Contour Interval
17	100000	Contour Interval
18	100000	Contour Interval
19	100000	Contour Interval
20	100000	Contour Interval

Greenhatch Group
 Topographical Surveys
 Rowan House
 Duffield Road
 Little Eaton
 DE21 5DR
 Tel (01332) 830044 Fax (01332) 830055

65 FOSKILL, NW-7.
 Existing Drainage Layout
 (Indicative only)
 CRK 001




DO NOT SCALE

Greenhatch Group Limited, 147, The Greenhatch, Little Eaton, Derbyshire, DE21 5DR. This plan is issued to the client for their use only. It is not to be used for any other purpose. The client is responsible for the accuracy of the information provided. The client is responsible for the accuracy of the information provided. The client is responsible for the accuracy of the information provided.

3000 Lt- Rain water Harvesting tank

Pumped irrigation supply

LEGEND.

-  Foul water - deep.
-  Surface water - deep
-  Surface water - ground level only

Overflow from R.W.H back into gravity drainage system

Drainage from side passage directed towards rear garden at upper level of terrace for use in Rain water Harvesting system.

Refer to CS4 002 for Basement drainage strategy.



DRAFT

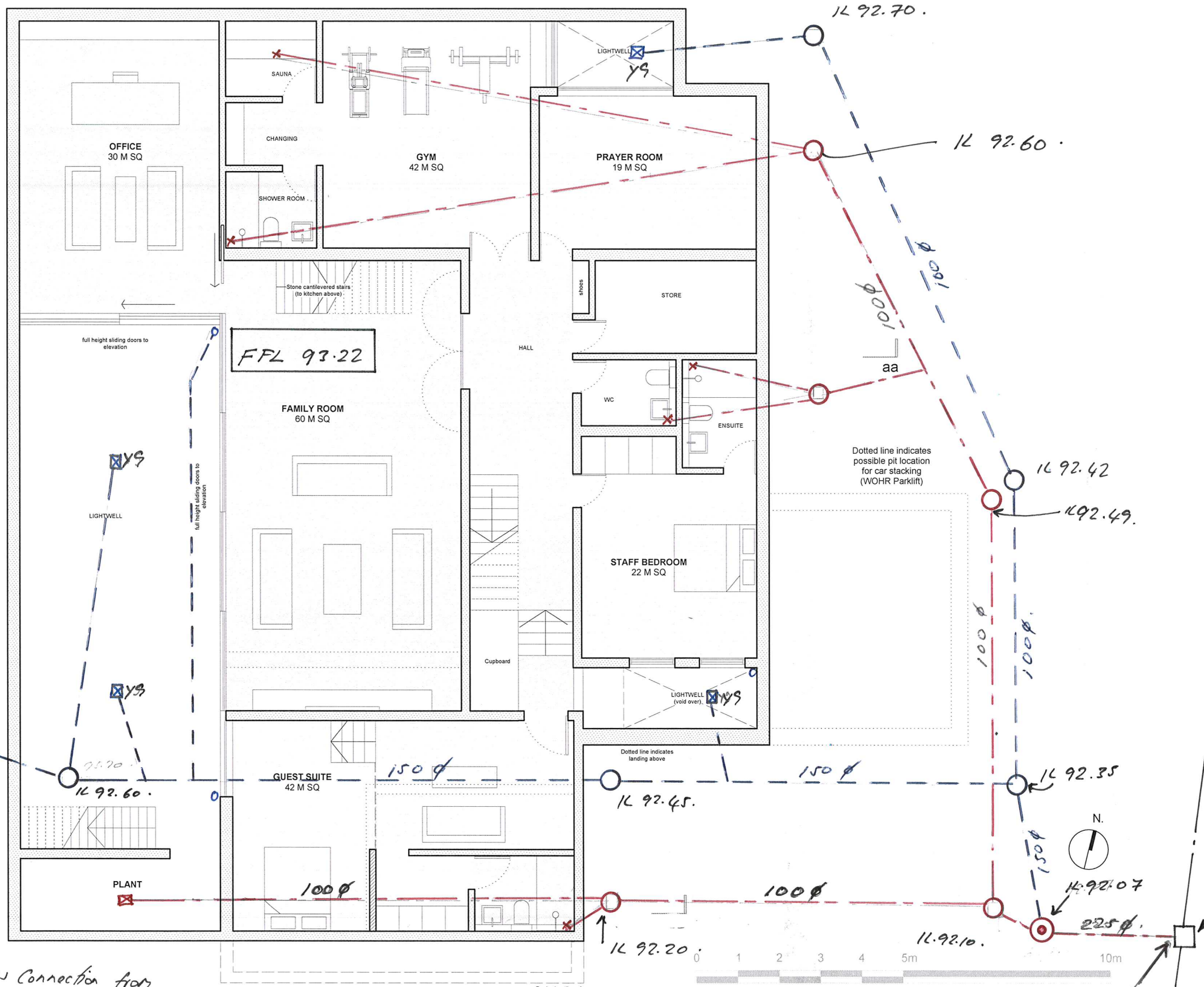
63 Froggall.
Drainage strategy
CS4 003
1:100 @ A3.

JAN 2013
P.H.

01 Proposed Site Plan

REVISIONS
- / - / 12 P1





- EX. TNU 381mm φ
- Proposed timber floor finish
- Proposed Wall structure
- Existing Wall structure
- Proposed stone floor finish
- TOTAL INTERNAL BASEMENT FLOOR AREA: APPROX 275 M SQ

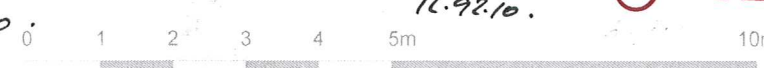
EX. TNU 1168 x 787mm

TNU-0502
CL
1L 91.60 (approx)

63 Frog Hall.
Basement Drainage Strategy.
CSK 002
1:100 @ AS.
JAN 2013.
P.H.

Overflow Connection from R.H.H TANK.

1L 92.10.
1L 92.07
225φ
1L 92.050
(Connection 450mm above invert of SENDER. T.A.A with TNU)



aa

bb

FFL 93.22

GUEST SUITE 42 M SQ

OFFICE 30 M SQ

GYM 42 M SQ

PRAYER ROOM 19 M SQ

FAMILY ROOM 60 M SQ

STAFF BEDROOM 22 M SQ

PLANT

SAUNA

CHANGING

SHOWER ROOM

STORE

WC

ENSUITE

Dotted line indicates landing above

Dotted line indicates possible pit location for car stacking (WOHR Parklift)

Dashed outline of garage above

full height sliding doors to elevation

full height sliding doors to elevation

Stone cantilevered stairs (to Kitchen above)

Cupboard

LIGHTWELL

LIGHTWELL

LIGHTWELL (void over)

YS

YS

YS

1L 92.70

1L 92.60

1L 92.42

1L 92.49

1L 92.35

1L 92.45

1L 92.60

1L 92.20

1L 92.10

1L 92.050

150φ

150φ

100φ

100φ

100φ

100φ

100φ

100φ

150φ

225φ