

CLIENT

London Borough of Camden
Housing & Adult Social Care Department

THIS DRAWING IS BASED ON DIMENSIONAL SURVEY INFORMATION PROVIDED BY OTHERS. THE ARCHITECT CANNOT ACCEPT RESPONSIBILITY FOR THE ACCURACY OF THIS SURVEY INFORMATION.
ALL DIMENSIONS ARE SHOWN IN METRIC.
THIS DRAWING REMAINS THE COPYRIGHT OF KARAKUSEVIC CARSON ARCHITECTS

NOTES

01	B2 units amended	11.02.2013
Rev	Reason for issue	Date

karakusevic carson architects
The Gymnasium
56 Kingsway Place, Sans Walk
London EC8R 0LH
Tel: +44 207 566 6300
Fax: +44 207 566 7381
Email: mail@karakusevic-carson.com

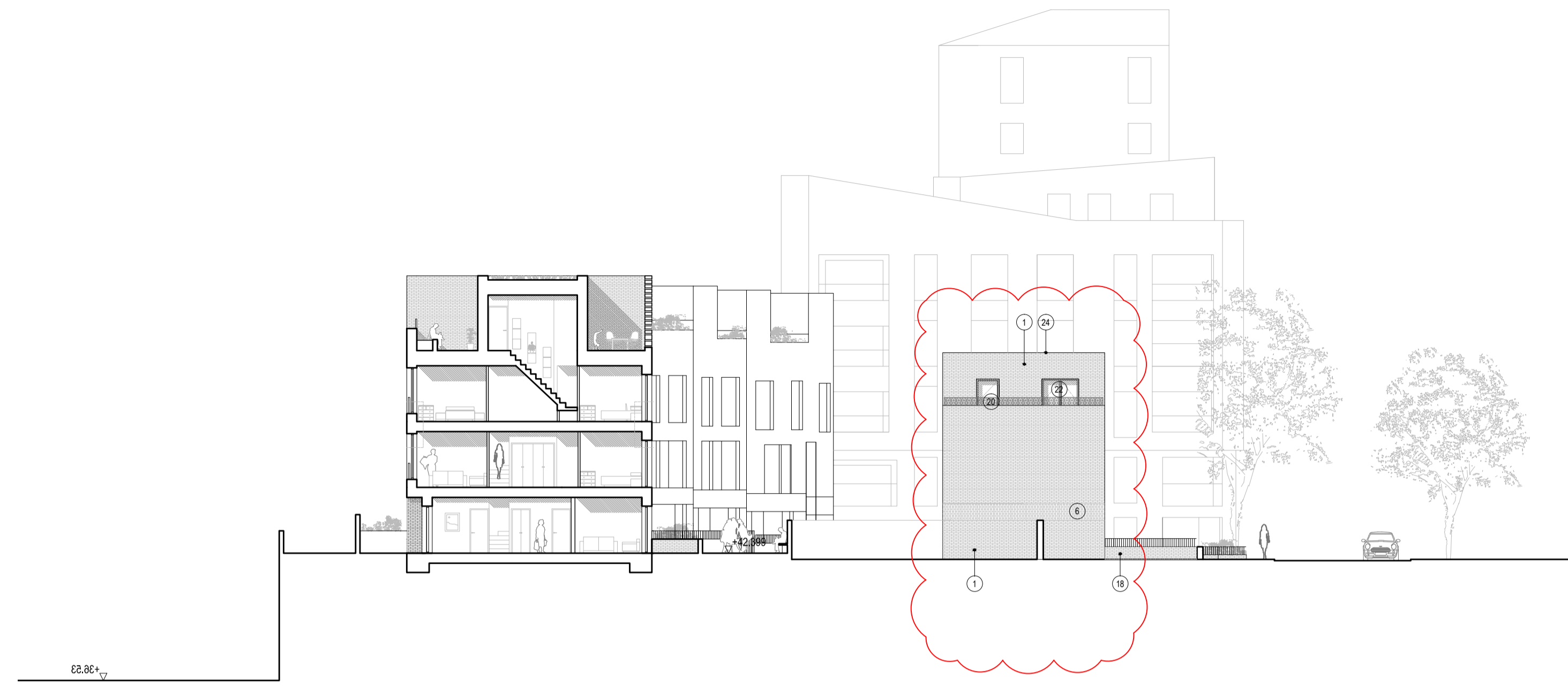
PROJECT
Bacton Low Rise Redevelopment
London Borough of Camden
London

TITLE
**DHO SITE
PROPOSED BLOCK B2 ELEVATIONS**

DRAWING NUMBER	REVISION
202_A_P_DHO_300_02	01

STATUS
PLANNING APPLICATION

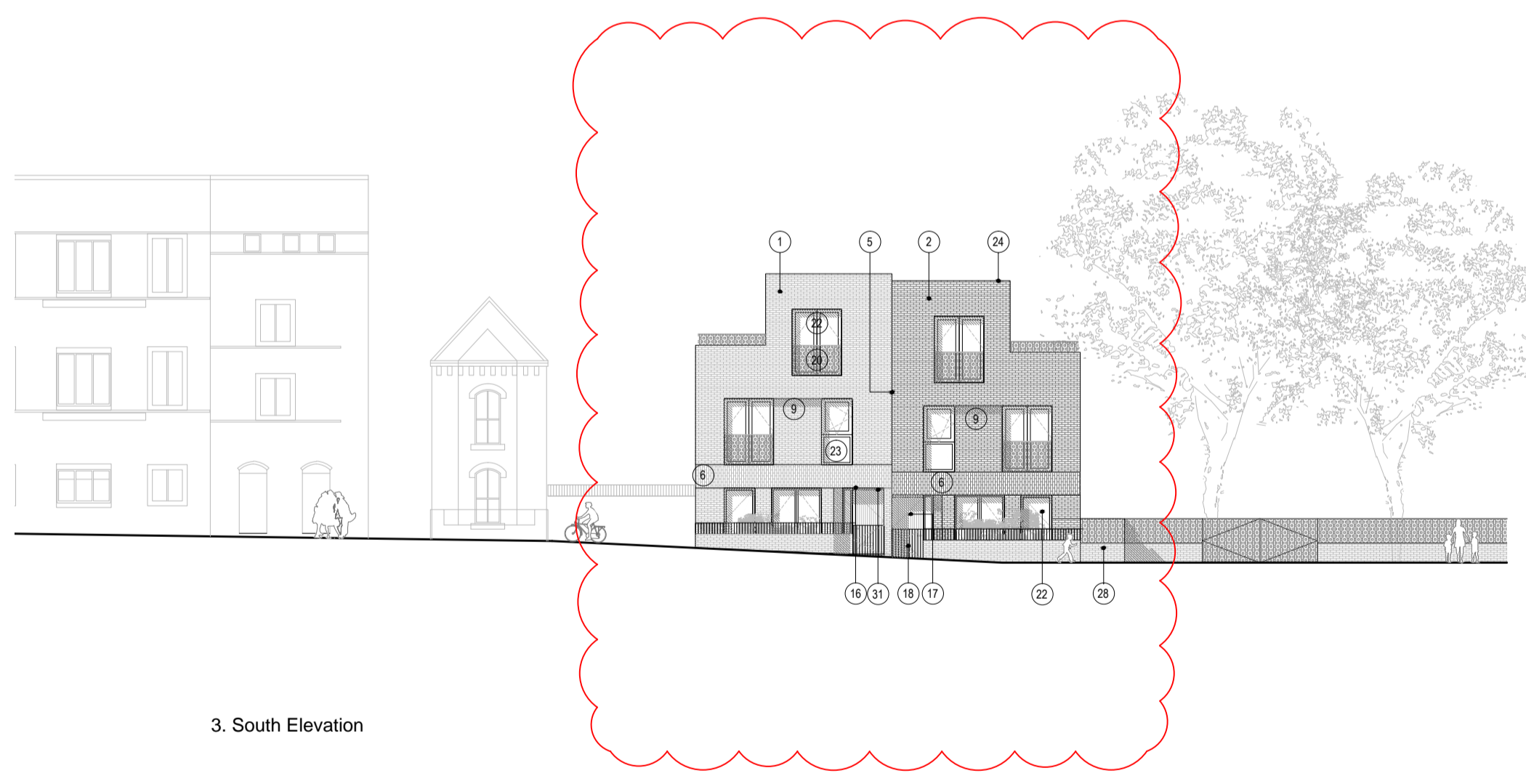
DATE	DRAWN BY	SCALE
11/02/2013	TC	1/200 @ A1
PLOT DATE	CHECKED BY	PROJECT NUMBER
11/02/2013	CH	202



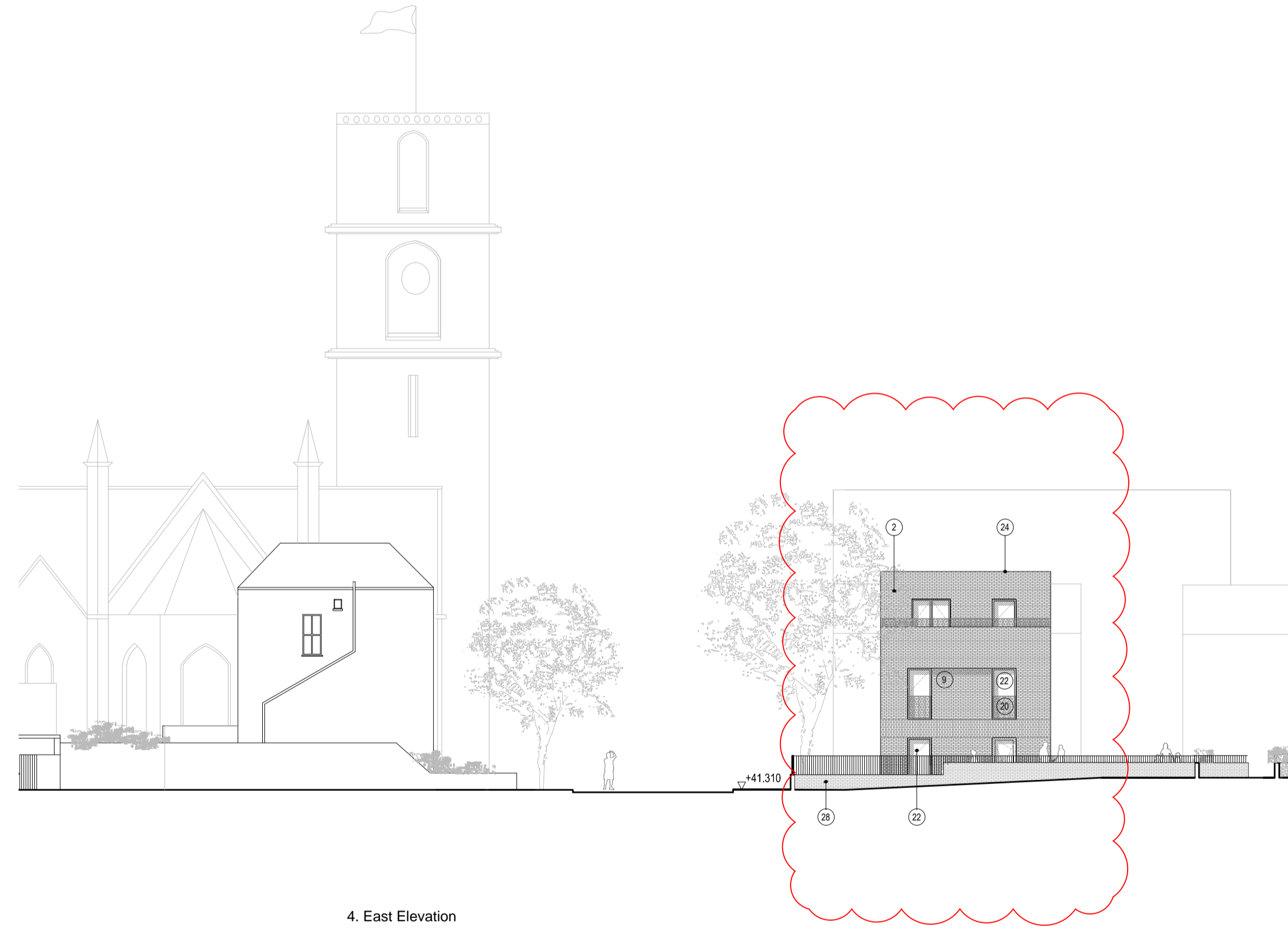
1. West Elevation



2. North Elevation



3. South Elevation



4. East Elevation

- BRICKWORK**
- High quality brickwork, mortar joint detail and colour to be approved. Type 1
 - High quality brickwork, mortar joint detail and colour to be approved. Type 2
 - High quality brickwork, mortar joint detail and colour to be approved. Type 3
 - High quality brickwork, mortar joint detail and colour to be approved. Type 4
 - Half brick shadow gap.
 - Brick vertical course, to match surrounding brickwork.
 - Hit and miss brickwork to match surrounding brickwork.
 - Decorative brickwork to match surrounding brickwork.
 - Building face set back by half a brick with brick reveal, brick type (type 1-4) and mortar to match surrounding brickwork.

- LOBBY ENTRANCES**
- Glazed double height entrance lobby with solid timber frame to match door, panelling with solid timber facing to match door and frames, colour and samples to be approved.
 - High quality brick finish to walls of entrance recess, brick type (type 1-4) and mortar detail to match surrounding brick wall, with surface mounted light fittings with conduits hidden. Lighting detail to be approved.
 - Secured By Design compliant patterned MS Steel gates. Gate design, colour and sample to be approved.
 - High grade stainless steel fronted multi-unit post box with brush finish stainless steel with external locking mechanism inside lobby to be SBD approved, high grade stainless steel video intercom system, e.g. Allgood, all mounted to align with brick joints.
 - Stainless steel dry riser door panel, frame and door furniture, finish to be approved, mounted to align with brick joints.
 - High quality louvered PPC metalwork clad doors and metal frame to bike and bin stores, stainless steel roomingery, kick plate & fob entry system, fully suited with management system (e.g. Allgood), colour to

- be approved.
- INDIVIDUAL ENTRANCES & FRONT GARDENS**
- Brick soffit to be mechanically fixed to underside and walls of recessed porch, brick type (type 1-4) and mortar detail to match surrounding brick wall.
 - Solid timber clad entrance door with 18mm+ timber facing, multi-point locks and stainless steel detailing and viewing panel, e.g. Urban Front or Spirit Doors, door detail and colour to be approved.
 - MS steel PPC balustrade and gates, railing to Landscape Architect's specification and detail, fob system and child safety measures, (e.g. Jacksons Fencing), colour to be approved, mounted to high quality brickwork garden walls, brick type (type 1-4) and mortar detail to match adjacent building brickwork.
 - High quality brick finish to walls and soffits of recessed balconies and roof terraces, brick type (type 1-5) and mortar to match surrounding brick walls.
- BALCONIES**
- Balustrade to Juliet Balcony / recessed balcony / terrace composed of mild steel perforated panel PPC. Colours and detail to be approved.

- WINDOWS**
- Ecodek type wood composite profiled decking to balconies and terraces, colour and samples to be approved.
 - High performance combination windows, balcony doors and glass doors system, eg. Futura + and Contura Nation, with PPC aluminium fascia and outer frame, softwood inner frame, colour and samples to be approved, full brick reveals to all windows and doors.
 - Opaque glass panel, colour to be approved.
 - Metal coping.
 - Integral gutters on exposed edges with hoppers & downpipes to architects design specification.

- LANDSCAPING**
- Green roof system, e.g. Erisco Bauder.
 - Zinc standing seam roof finish, to form gutters and coping details at edges, samples to be approved.
 - High quality brick walls with mounted balustrade to Landscape Architect specification and detail.
 - High quality street lighting to lighting specification and detail, to be approved.
 - Canopy to double height entrance lobbies. GRC panels mechanically fixed back to steel sub-structure to structural engineers specifications.
 - Canopy to individual entrances to be self supporting GRC canopy mechanically fixed back to proposed structure.

- SPECIALS**
- Entrance signage to be embossed into GRC.
 - Specialist windows to acoustician's performance specification. Please refer to Acoustician's report for further information.
 - Double skin brickwork to meet acoustician's performance specification. Please refer to Acoustician's report for further information.
 - Chimney from gas boiler. Enclosures to be formed from light weight timber with zinc standing seam finish to match roof.
 - GRC planter boxes to architects detail.