

UNIT LAYOUT: 010

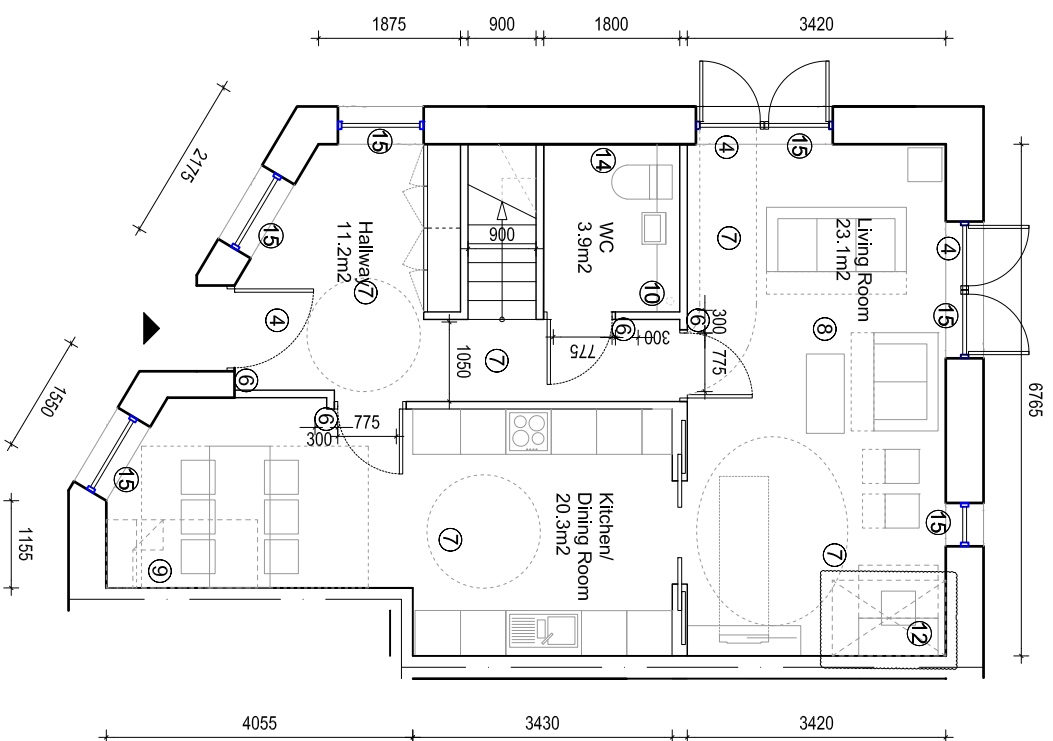
DHO SITE: BLOCK B1
LEVEL 00-01

M2B4P SOCIAL
N/A: 119.98m²

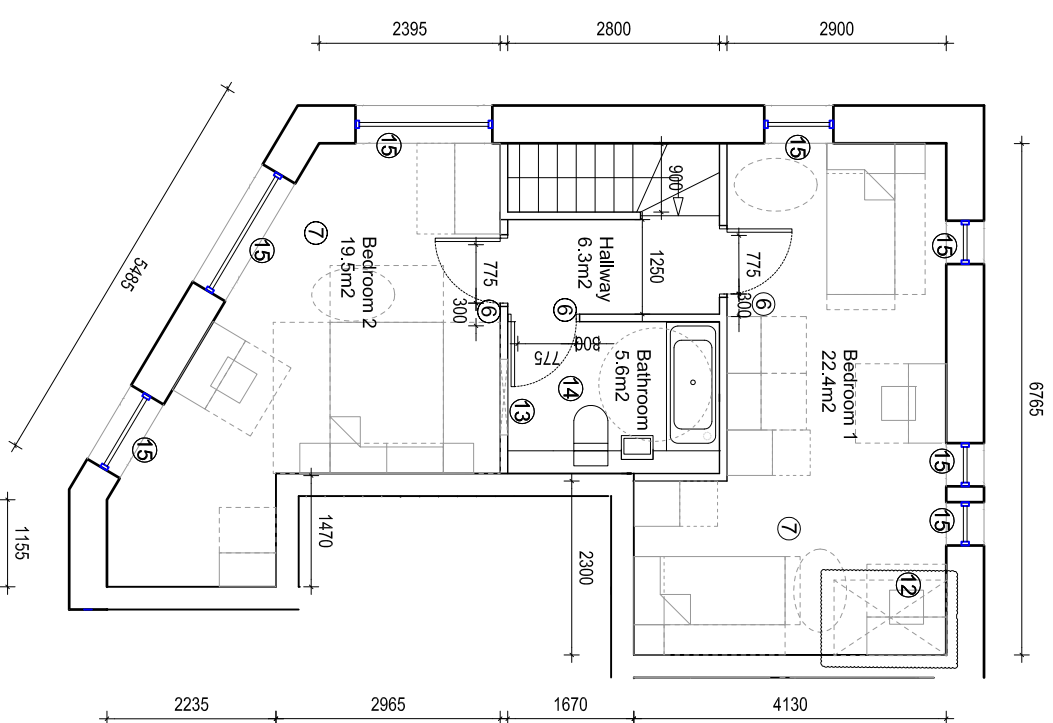
No. of units: 2

All Flat Units are designed in accordance with the Lifetime Homes Criteria, July 2010. Lifetime Homes Criterion is shown as follows:

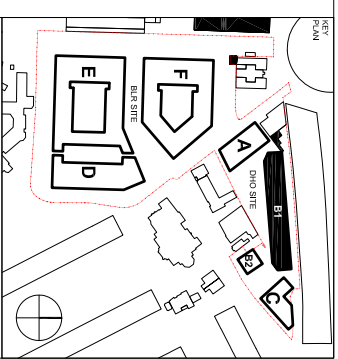
- ④ ⑤ ⑥ ⑦ ⑧ ⑨ ⑩ ⑪ ⑫ ⑬ ⑭ ⑮ ⑯



LEVEL 00



LEVEL 01



London Borough of Camden
Housing and Adult Social Care
Department

THIS DRAWING IS THE PROPERTY OF KARAKUSEWICZ CARSON ARCHITECTS AND IS NOT TO BE REPRODUCED OR TRANSMITTED IN ANY FORM OR BY ANY MEANS, ELECTRONIC OR MECHANICAL, INCLUDING PHOTOCOPYING, RECORDING, OR BY ANY INFORMATION STORAGE AND RETRIEVAL SYSTEM, WITHOUT THE WRITTEN PERMISSION OF KARAKUSEWICZ CARSON ARCHITECTS. ALL DIMENSIONS ARE SHOWN IN METRES. THIS DRAWING RELATES TO THE COMPONENT OF KARAKUSEWICZ CARSON ARCHITECTS.

NOTES

Rev	Reason for Issue	Date
02	Formal issue to Planners	08/02/2013
01	Through floor lift position revised	11/01/2013
01	Revision by Issue	

karakusewicz carson architects

The Corporation of Architects
100, Abchurch Lane, London EC4N 3DF
Tel: +44 207 566 6300
Fax: +44 207 566 7381
Email: info@karakusewicz-carson.com

PROJECT
Badon Low Rise Redevelopment
London Borough of Camden
London

TITLE
Unit Layout 010. Site DHO
Building B1, Level 00-01
M2B4P. Social

PROJECT NUMBER
202_A_P_DHO_110_010

REGION
02

STATUS
PLANNING APPLICATION

DATE	DRAWN BY	SCALE
08/02/2013	AR	1/100 @ A3
PROJECT DATE	CHECKED BY	PROJECT NUMBER
08/02/2013	SM	202