

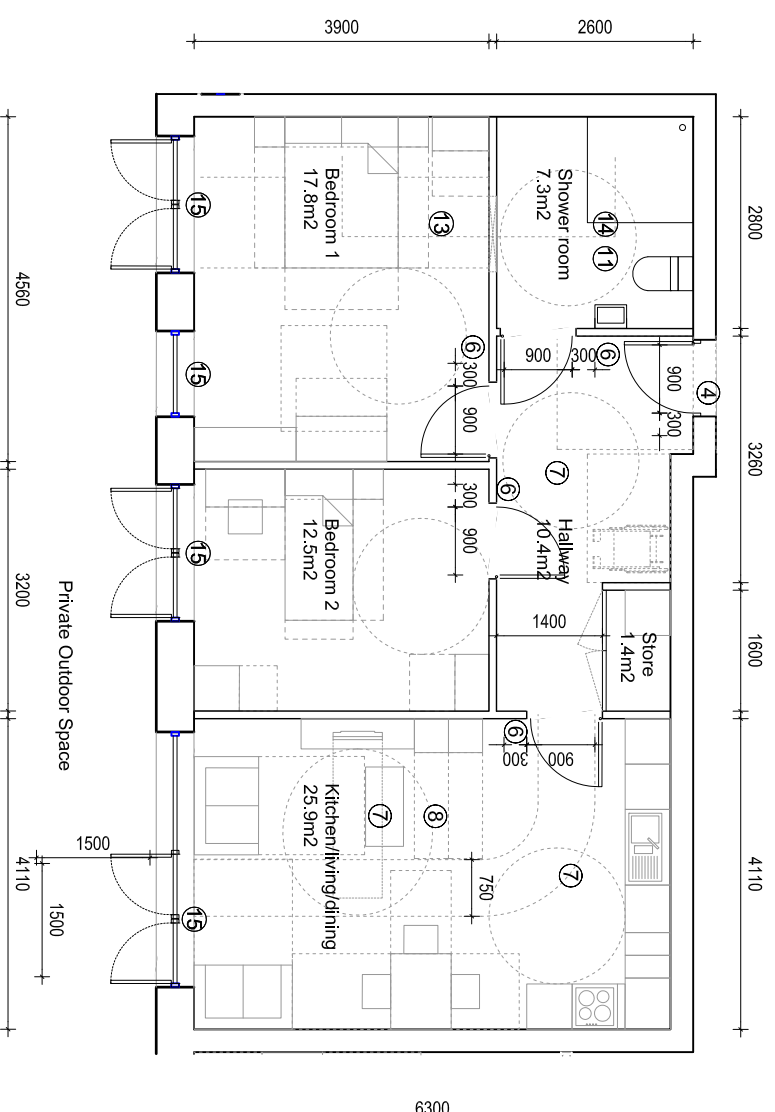
UNIT LAYOUT: 033

BLR SITE: BLOCK E3
 LEVEL 00,01,02,03
 2B4P WAU SOCIAL
 NIA: 77.4m2

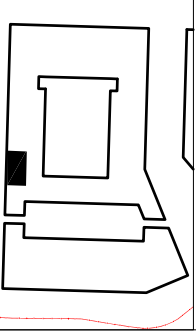
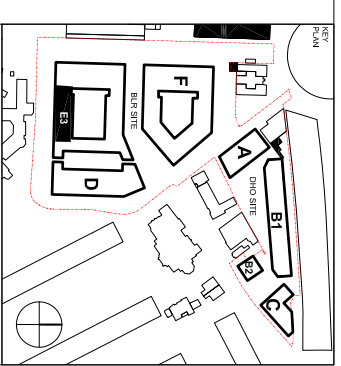
No. of unit types: 4

All Flat Units are designed in accordance with the Lifetime Homes Criteria, July 2010. Lifetime Homes Criterion is shown as follows:

- ③ ④ ⑤ ⑥ ⑦ ⑧ ⑨ ⑩ ⑪ ⑫ ⑬ ⑭ ⑮ ⑯



TYPICAL FLAT LAYOUT: LEVEL 00 SHOWN



Client
 London Borough of Camden
 Housing and Adult Social Care
 Department

THIS DRAWING IS THE PROPERTY OF KARAKUSEWICZ CARSON ARCHITECTS AND IS NOT TO BE REPRODUCED OR TRANSMITTED IN ANY FORM OR BY ANY MEANS, ELECTRONIC OR MECHANICAL, INCLUDING PHOTOCOPYING, RECORDING, OR BY ANY INFORMATION STORAGE AND RETRIEVAL SYSTEM. ALL DIMENSIONS ARE SHOWN IN METRES. THIS DRAWING REMAINS THE COPYRIGHT OF KARAKUSEWICZ CARSON ARCHITECTS

NOTES

Rev	Revision	Date
01	Formal Issue to Planners	08/02/2013
	Revised by Issue	

karakusewicz carson architects

The Corporation of Camden
 5, Smith Street
 London EC1A 7JL
 Tel: +44 207 566 6300
 Fax: +44 207 566 7381
 Email: info@karakusewicz-carson.com

PROJECT
 Badon Low Rise Redevelopment
 London Borough of Camden
 London

TITLE
 Unit Layout 033. Site BLR
 Building E3. Level 00,01,02,03
 2B4P WAU Social

DRAWING NUMBER	REGION
202_A_P_BLR_110_033	01

STATUS
 PLANNING APPLICATION

DATE	DRAWN BY	SCALE
08/02/2013	AR	1/100 @ A3
FOR DATE	CHECKED BY	PROJECT NUMBER
08/02/2013	SM	202