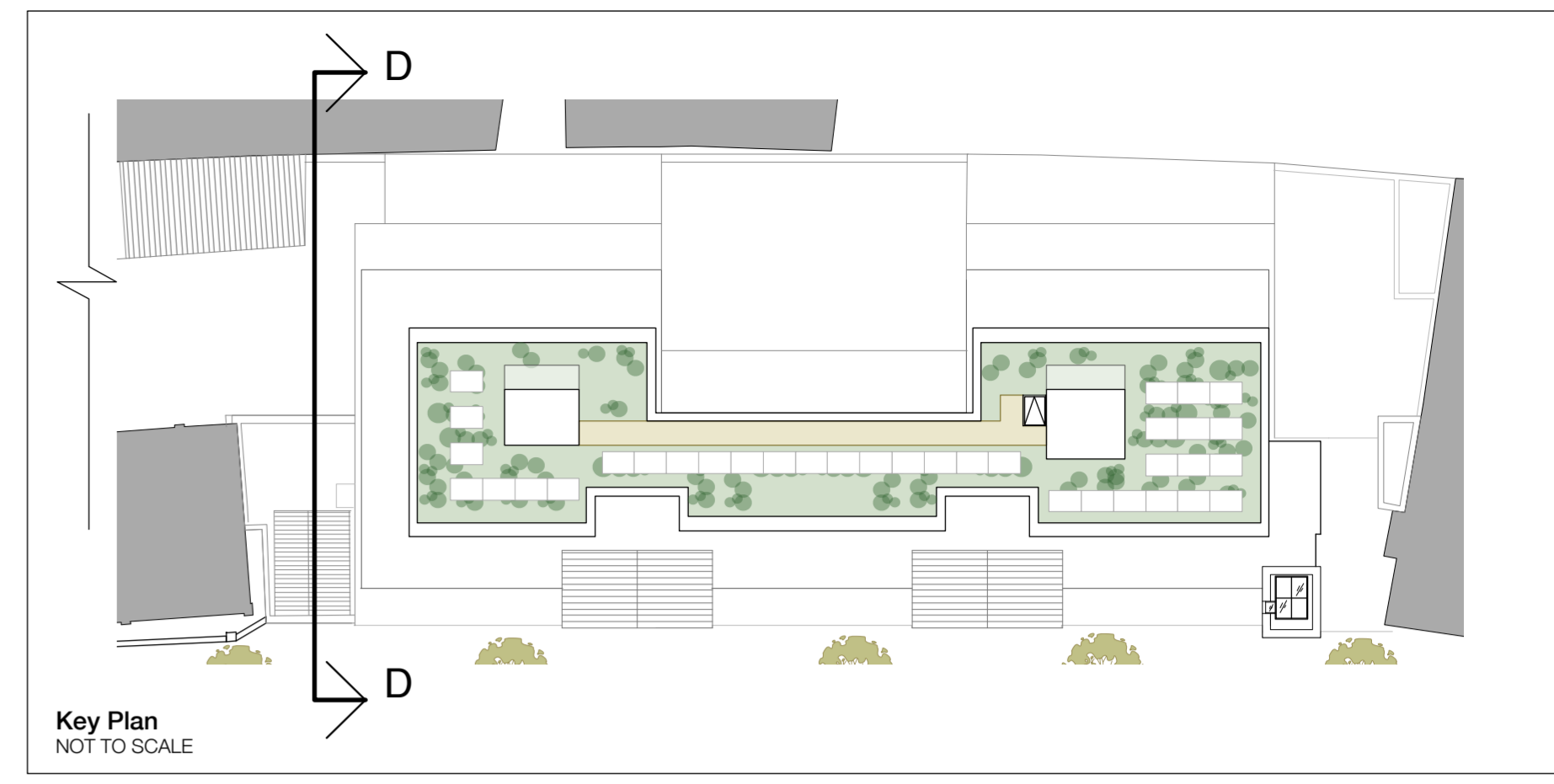




Proposed South West Flank Elevation (D-D)



NOTES:

- 1 Water tower to be rebuilt with brick to match the existing facade with simple coping detail at parapet level to match retained facade
- 2 Two storey glazed link between water tower and copper clad facade with back painted glass spandrel panels above FCL and between 3rd floor FCL and 4th floor worktop level (in kitchen)
- 3 Parapet level to the two storey extension to sit below decorative cornice work to adjacent building
- 4 Two storey extension to North East single storey facade, brickwork, stonework and fenestration are to match the existing facade and decorative cornice above ground floor is to be retained
- 5 Windows to retained facade to be replaced with timber sash double glazed windows to match existing
- 6 Retained facade to be refurbished with brickwork and stonework made good or replaced on a like-for-like basis and elevation repointed. Additional insulation to be added to inner face of existing wall to meet Part L / CISH's requirements.
- 7 Lift overrun to be clad in copper to match upper floor facades
- 8 Fourth and Fifth floors to be clad in treated copper / bronze with traditional standing seam details
- 9 Flank elevations windows at 4th & 5th floor to be double or triple glazed (dependant upon CISH's requirements) with anodised aluminium frames to complement copper and back painted glass spandrel panels above FCL
- 10 Treated Aluminium cap flashings to parapets to match window frames
- 11 New facades to 3rd (and 4th where shown) floor level to be clad with brickwork (finish as detailed in drawing 1588(PL)218)
- 12 Windows to be double or triple glazed (dependant upon CISH's requirements) with coloured anodised aluminium frames to complement copper
- 13 Spandrel panels with treated copper finish adjacent to windows
- 14 Cantilevered protruding balconies
- 15 Perforated metal balustrades to 1100mm above FFL with treated copper / bronze finish (as detailed in drawing 1588(PL)218)
- 16 1200mm high walls between gardens with 600mm trellis above
- 17 Structure of gable roofs to be rebuilt with coverings (clay roof tiles) to match the existing
- 18 Parapet level raised with brickwork & copings to match existing to give existing facade dominance in scale
- 19 Chimney to be retained and restored as required
- 20 Drainpipe and hopper to be replaced with new cast iron to match heritage of the building
- 21 Obscure glazing to bottom panes of windows at 2nd floor level where windows to Aldwych building are opposite
- 22 Apex of roof and parapet line shown dashed
- 23 Biodiversity roof to rear flat roof of little house
- 24 Brick flank wall raised and extended with brickwork to match existing to appear as party wall mansard extension from corner view
- 25 Roof profile of 4th floor roof and shading devices behind brick flank wall extension shown dashed

