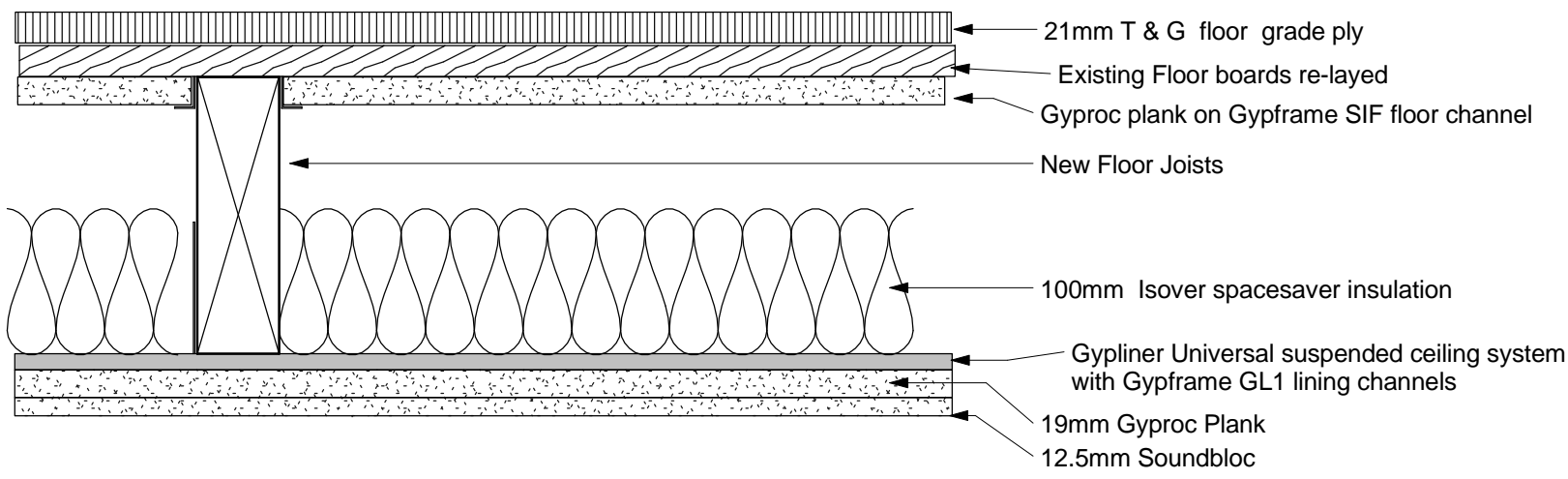
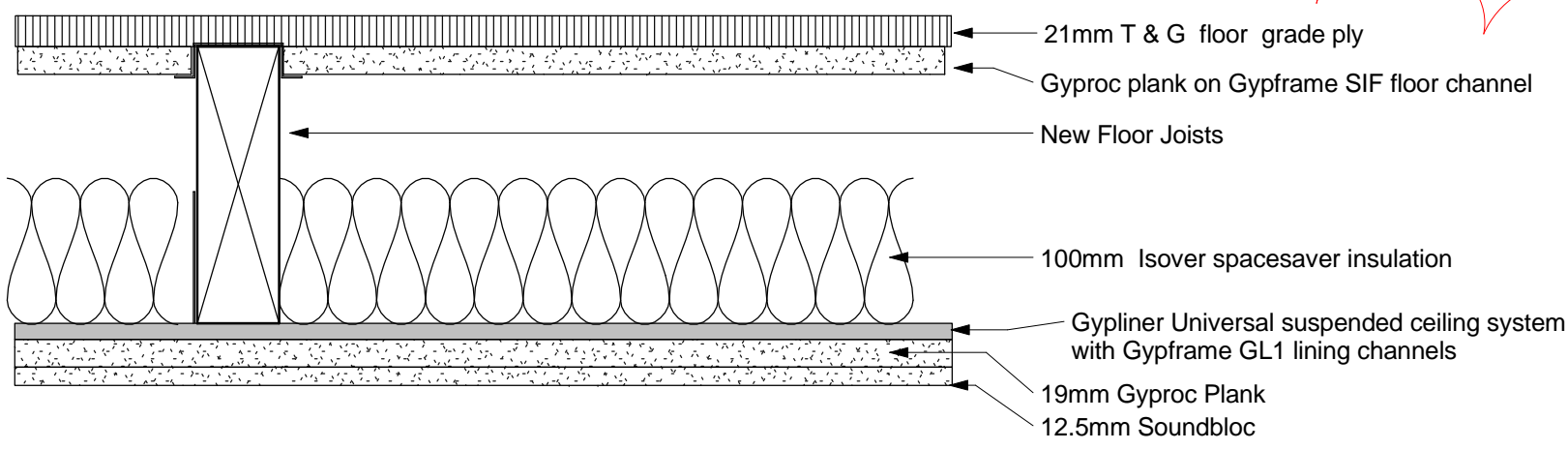


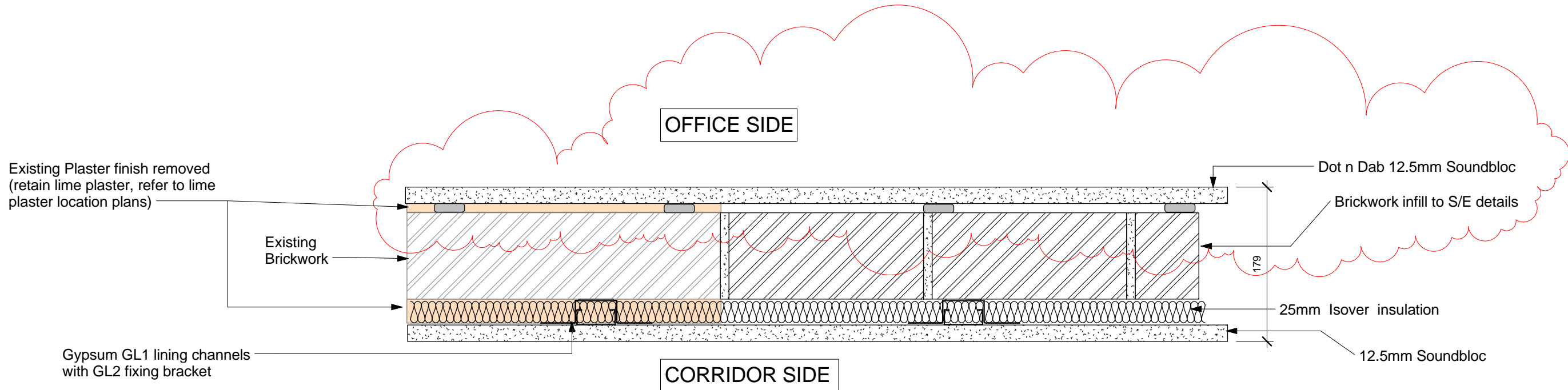
EXISTING UPPER FLOOR / CEILING DETAIL - Construction to achieve Dn7,w 45 dB



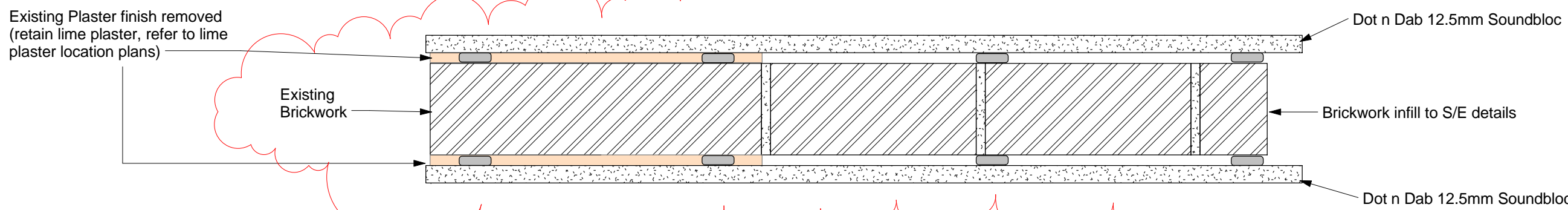
NEW UPPER FLOOR / CEILING SECTION DETAIL - Construction to achieve Rw 63 dB



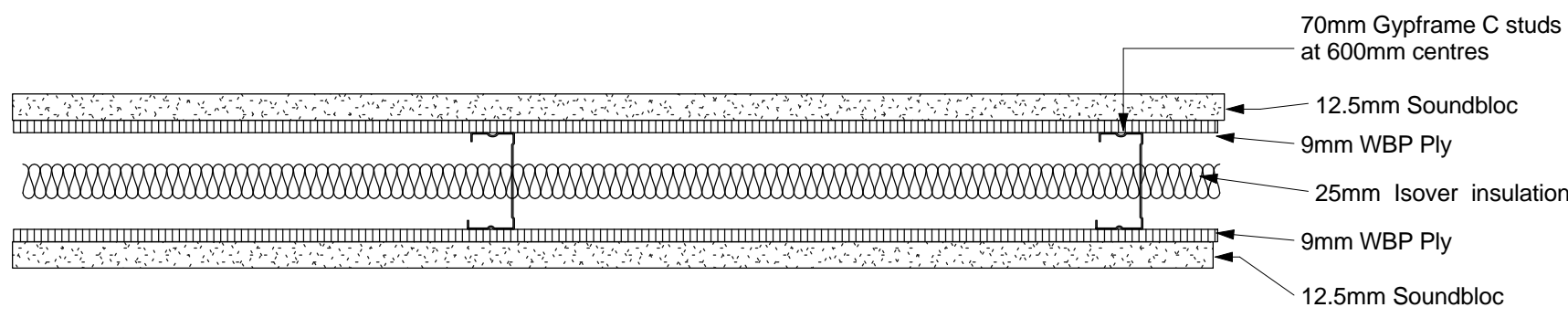
REAR SCULLERY FLOOR & CEILING SECTION DETAIL - Construction to achieve Rw 63 dB



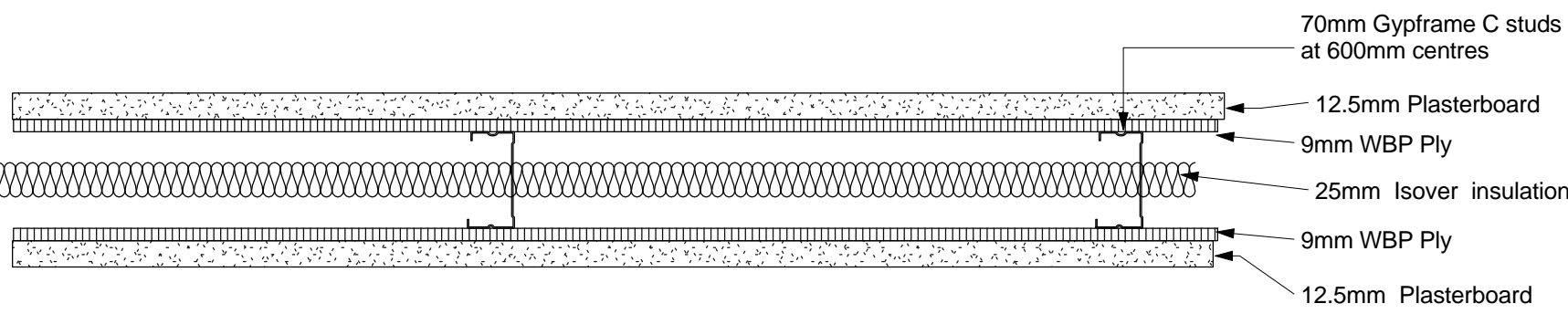
WALL INFILL DETAIL Rw 50 dB



WALL INFILL DETAIL Rw 45 dB



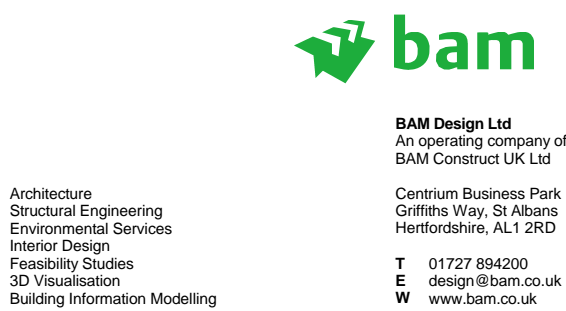
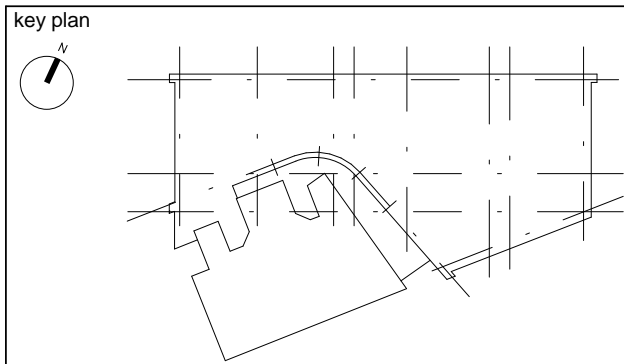
NEW PARTITION DETAIL Rw 50 dB



NEW PARTITION DETAIL Rw 45 dB

DO NOT SCALE FROM THIS DRAWING.
ALL DIMENSIONS TO BE CHECKED ON SITE.

| | | | | |
|-----|-----|----------|------|--|
| C | GHP | 31-01-13 | GP | detail & notes added as clouded. Top hat solution revised to dot & dab |
| B | GHP | 23-11-12 | GP | Existing floor boards indicated |
| A | GHP | 15-11-12 | GP | Updated following SBA comments. Ply removed from SB walls as agreed with WM & BAMC team. Draughting errors corrected. Issued as part of CP's |
| rev | by | date | chkd | amendments |



Stanley South Building - Building E1
Kings Cross Redevelopment

Stanley Building Typical Floor & Internal Wall Details

| APPROVAL | | | |
|--------------|--------|------------|------------|
| contract no. | --- | scale | 1 : 5 @ A1 |
| client ref. | Argent | date | 09/17/12 |
| drawn by | BAMD | checked by | GP |
| drawing no. | 4142 | rev | C |
| | ARCH | 1433 | |