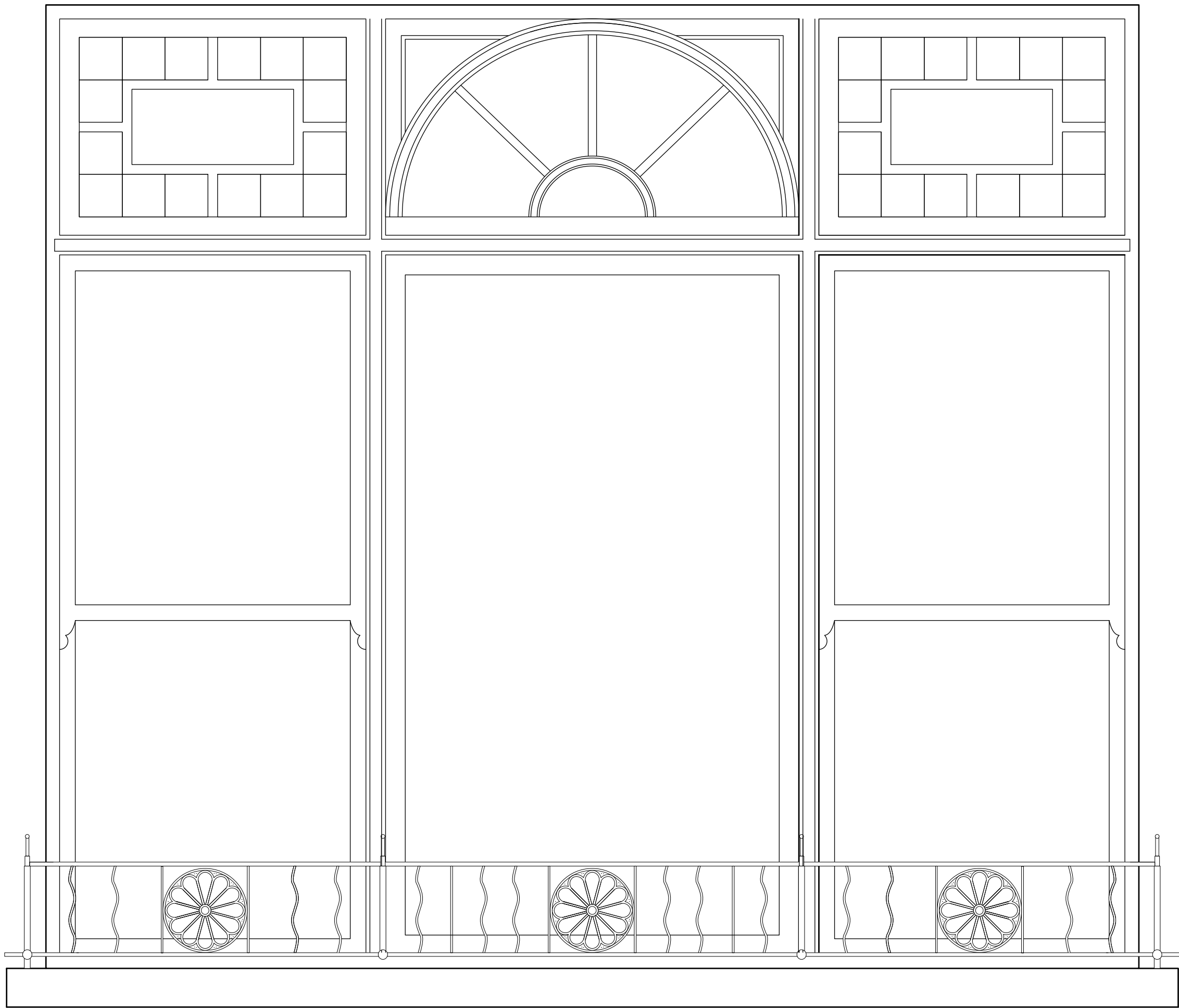
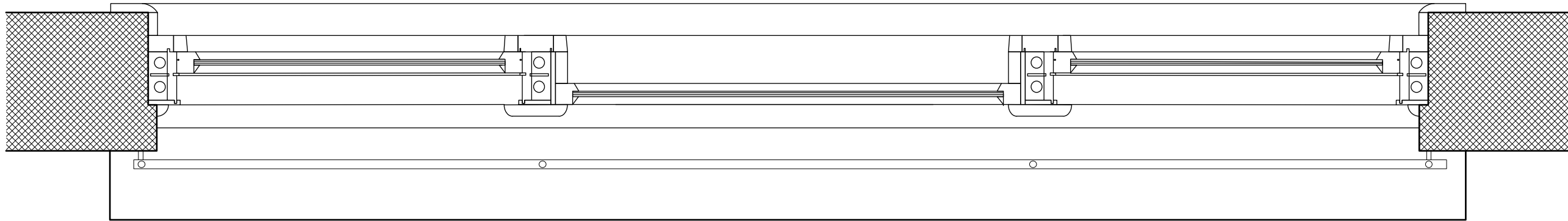


ELEVATION



PLAN

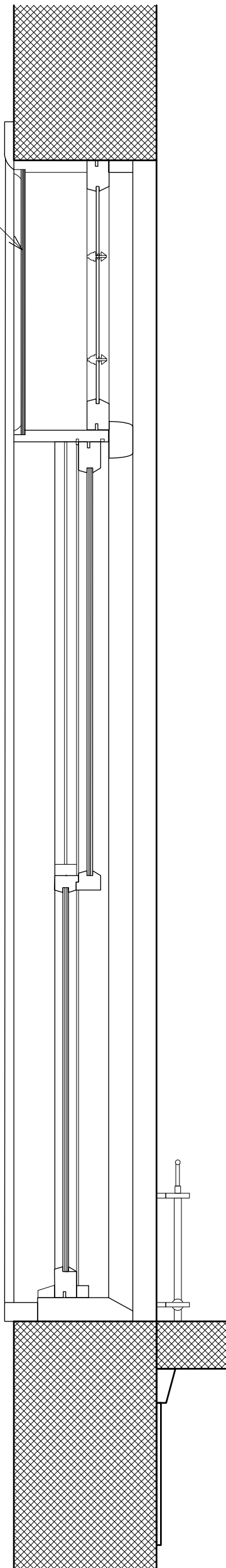


FRONT ELEVATION

PROPOSED KITCHEN WINDOW AT
1:10 SCALE

SECTION

Secondary glazing to
this part



Description: To this window, the two existing sash windwos are being replaced into the existing frame with heritage double glazed units. The single central fixed pane is also being replaced with heritage double glazing in the same frame. The top part of this window is remaining as existing with secondary glazing being placed internally as shown on the section. This ensures that the window has the same appearance from the outside as it does currently.

0m 1m

ARCHITECTS
83 Weston Street
London
SE1 3RS
020 7403 9090

Job Title
4 Maresfield Gardens
Job Number
1111

Created: February 2013
Drawn by: Stephanie Poynts
Checked by: Matthew Wood
Last modified: February 2013

Drawing Status
Tender
Drawing Scale
1:10 at A1

Drawing Name
**FRONT: Kitchen window -
plan, section, elevation**

Layout ID
P2.46
Revision
-

Revision Notes
-