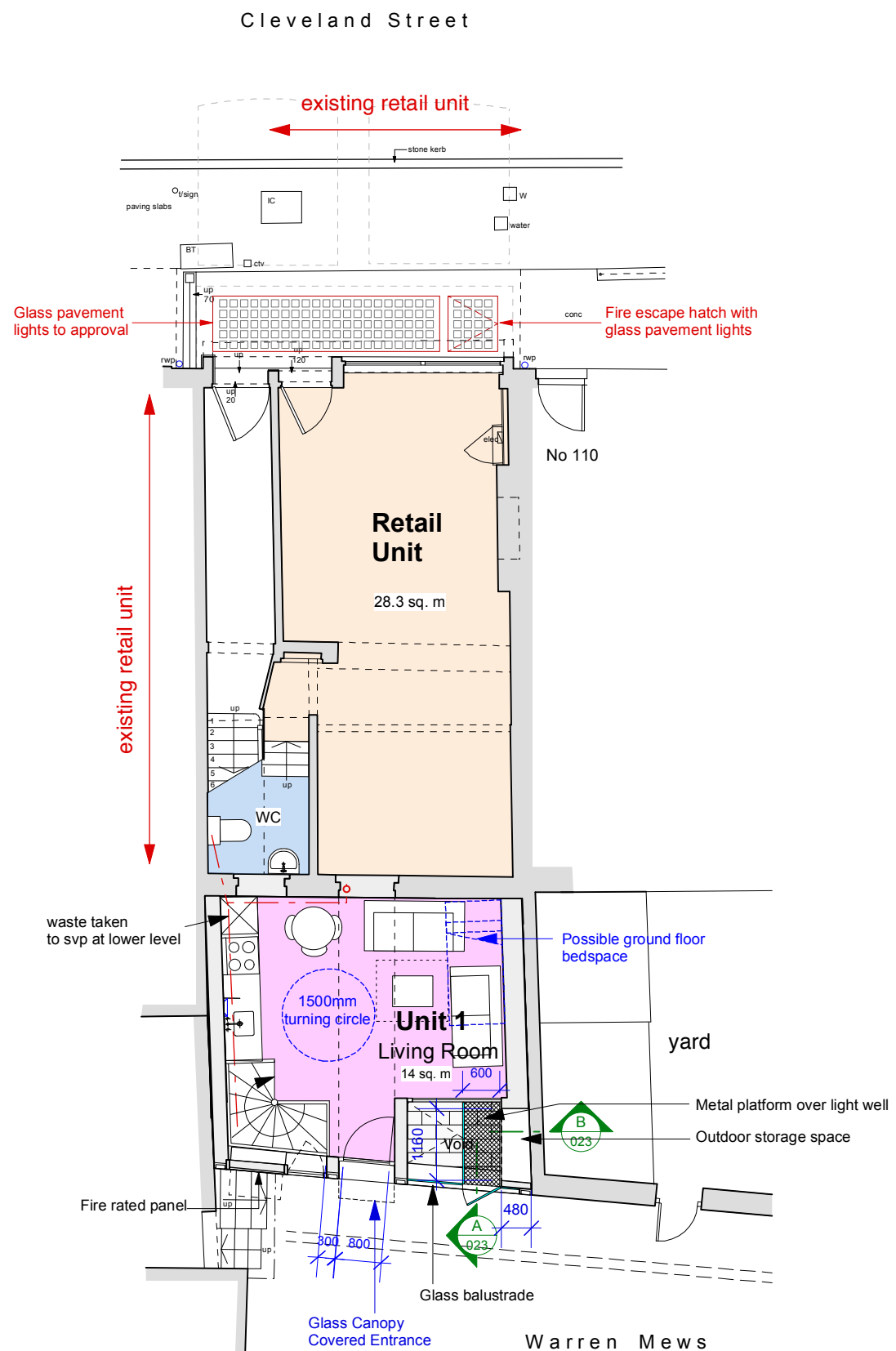


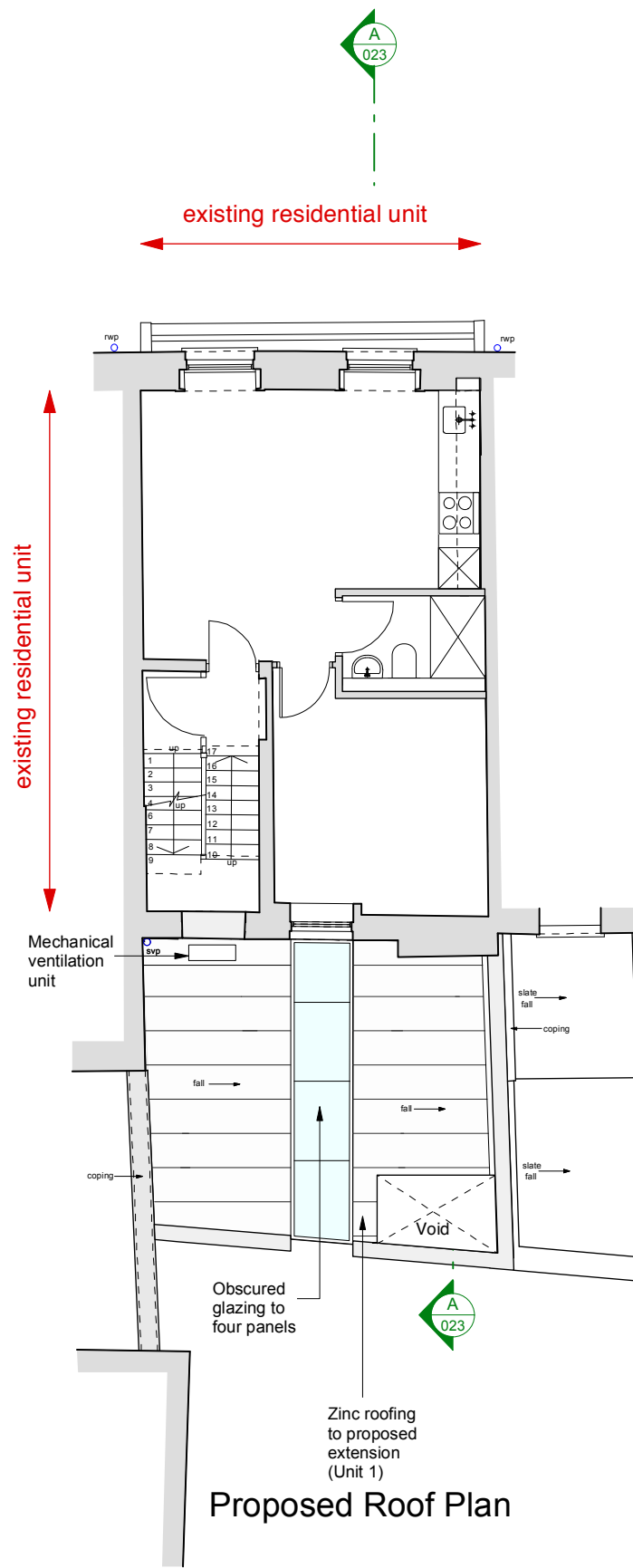
Basement Plan

Approx. Gross Internal Area - 50.1 sq. m (539 sq. ft)

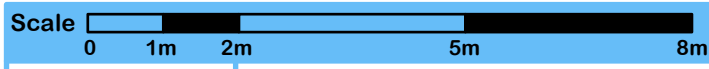


Ground Floor Plan

Approx. Gross Internal Area - 15.8 sq. m 170.4 sq. ft)



Proposed Roof Plan



Norton Ellis Architects Ltd
 14 Baltic Street East
 London EC1Y 0UJ
 Tel: 020 7490 3142
 Fax: 056 0209 3407
 www.nortonellis.co.uk
 mail@nortonellis.co.uk

These particulars do not constitute, nor constitute any part of, an offer or a contract. All statements contained in these particulars as to this property are made without the responsibility on the part of Norton Ellis Architects Ltd, or the Vendors or Lessors. None of the statements contained in these particulars as to this property are to be relied on as statements or representations of fact. All measurements are approximate and no responsibility is taken for any error, omission, or mis-statement and any intending purchaser or tenants must satisfy themselves by inspection or otherwise as to the correctness of each of the statements contained in these particulars/ plans.

All dimensions to be checked on site and any discrepancy to be reported to the Architect prior to construction. This drawing to be read in conjunction with all other drawings including those of other consultants. Samples of all materials to be provided for comment/ approval prior to fabrication/construction

© 2012 Norton Ellis Architects Ltd.

Proposed Residential Unit 1 Basement & Ground Floor Plans

PURPOSE OF ISSUE

Preliminary ☐

Planning ☒

Tender ☐

Construction ☐

239-050

Rev: B

Date: 23.01.12

Scale: 1:100 @ A3

Rev B - 27.02.13 - Updated to show new outdoor storage
 Rev A - 25.09.12 - Updates to reflect Lifetime Homes

norton ellis architects nea

108 Cleveland Street, London, W1T

**Proposed Residential Unit 1
Basement & Ground Floor Plans**