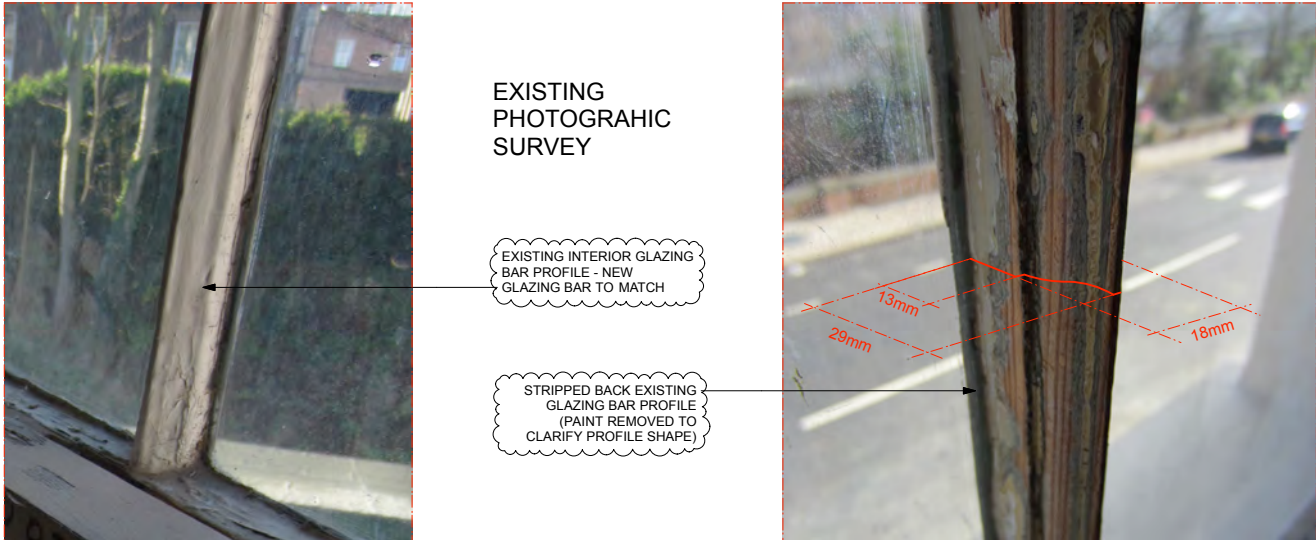


PROPOSED FRONT ELEVATION

NOTE: WINDOWS TYPES AS INDICATED;
A - SINGLE GLAZED,
B - DOUBLE GLAZED.
REFER TO DRAWING NOS: 3139_TP.3005
& 3139_TP.3006 FOR DETAILS



FRONT ELEVATION
(East Facing)

PARK VILLAGE EAST

GENERAL NOTES:
Do not scale from this drawing.
Check drawing on receipt and immediately
report any discrepancies to the Architect.
Verify all dimensions and levels
on site prior to construction.
The contents of this drawing are
Stiff + Trevillion Architects LLP copyright
and shall not be re-used without their written permission.

No.	Date	Revision Notes
A	4/3/13	Photographic Survey info added

PLANNING

Stiff + Trevillion

Stiff + Trevillion Architects LLP
16 Woodfield Road
London W9 2BE
T +44(0)20 8960 5550
F +44(0)20 8969 8668
mail@stiffandtrevillion.com
www.stiffandtrevillion.com

Project	36 PARK VILLAGE EAST LONDON NW1 1PZ		
Drawing	FRONT ELEVATION (East) AS PROPOSED		
Project No	3139	Drawing No	TP.2001
Scale	1:50 @ A1 1:100 @ A3	Date	NOV/2012
Revision	A	Revised	-

PROPOSED REAR ELEVATION

NOTE: ALL WINDOWS TYPE B UNLESS SPECIFIED.
A - SINGLE GLAZED,
B - DOUBLE GLAZED.
REFER TO DRAWING NOS: 3139_TP.3005
& 3139_TP.3006 FOR DETAILS



REAR ELEVATION
(West Facing)
PARK VILLAGE EAST

<div>GENERAL NOTES:</div> <div>Do not scale from this drawing.</div> <div>Check drawing on receipt and immediately report any discrepancies to the Architect.</div> <div>Verify all dimensions and levels on site prior to construction.</div> <div>The contents of this drawing are Stiff + Trevillion Architects LLP copyright and shall not be re-used without their written permission.</div>	No.	Date	Revision Notes	<div>PLANNING</div> <div>Stiff + Trevillion</div> <div>Stiff + Trevillion Architects LLP 16 Woodfield Road London W9 2BE</div> <div>T +44(0)20 8960 5550 F +44(0)20 8969 8668 mail@stiffandtrevillion.com www.stiffandtrevillion.com</div>	Project 36 PARK VILLAGE EAST LONDON NW1 1PZ		
	Drawing REAR ELEVATION (West) AS PROPOSED						
	Project No	Drawing No	Revision				
	3139	TP.2002	-				
	Scale	1:50 @ A1 1:100 @ A3	Date NOV/2012		Revised -		

PROPOSED SIDE ELEVATION

NOTE: ALL WINDOWS TYPE B UNLESS SPECIFIED
A - SINGLE GLAZED,
B - DOUBLE GLAZED.
REFER TO DRAWING NOS: 3139_TP.3005
& 3139_TP.3006 FOR DETAILS

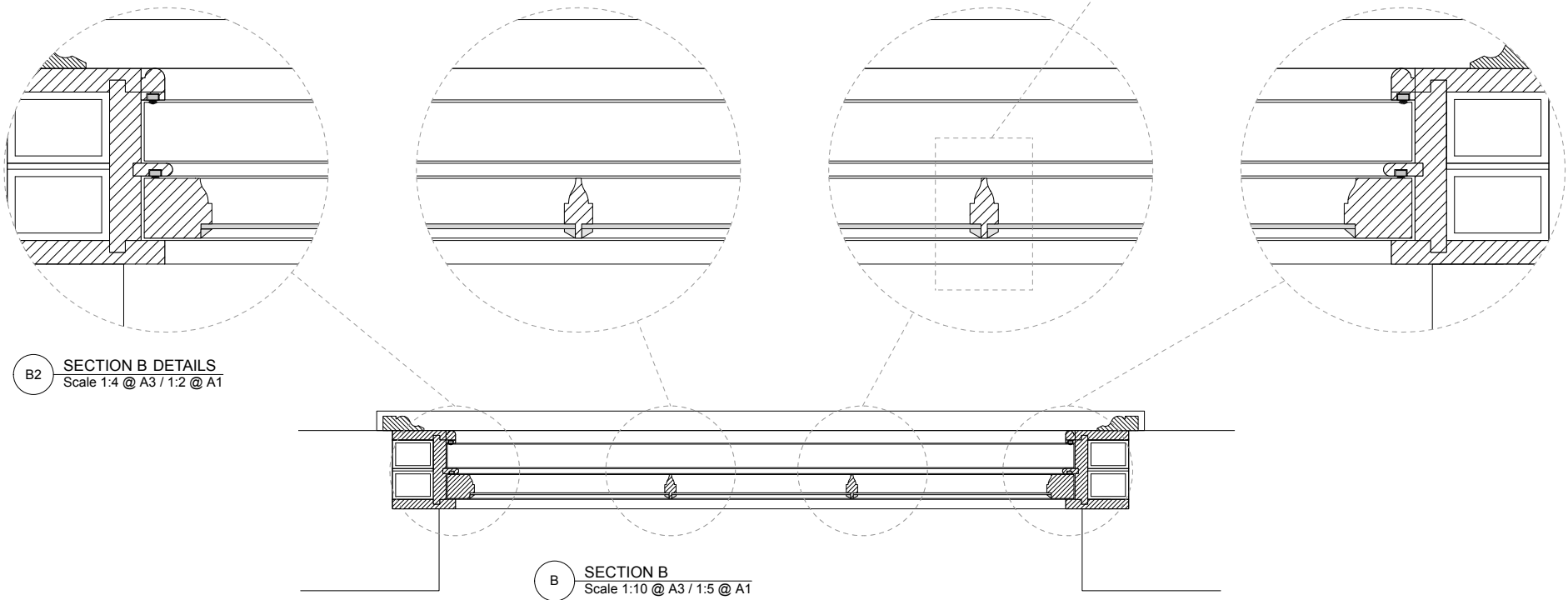
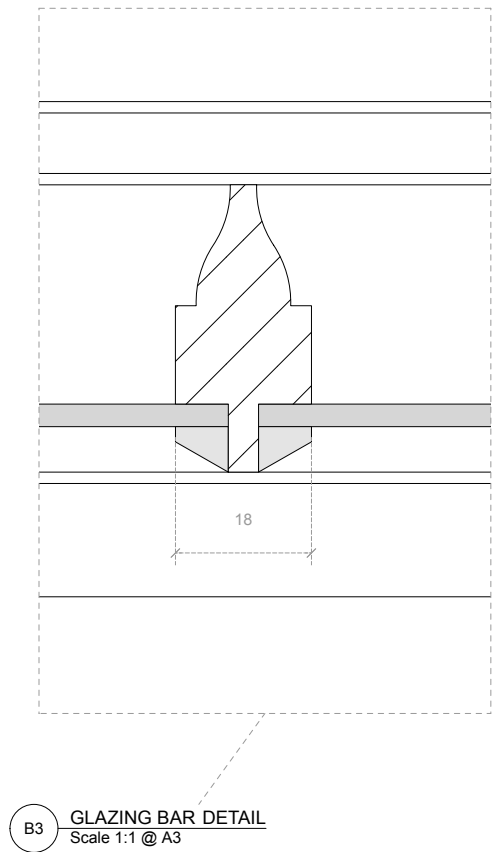
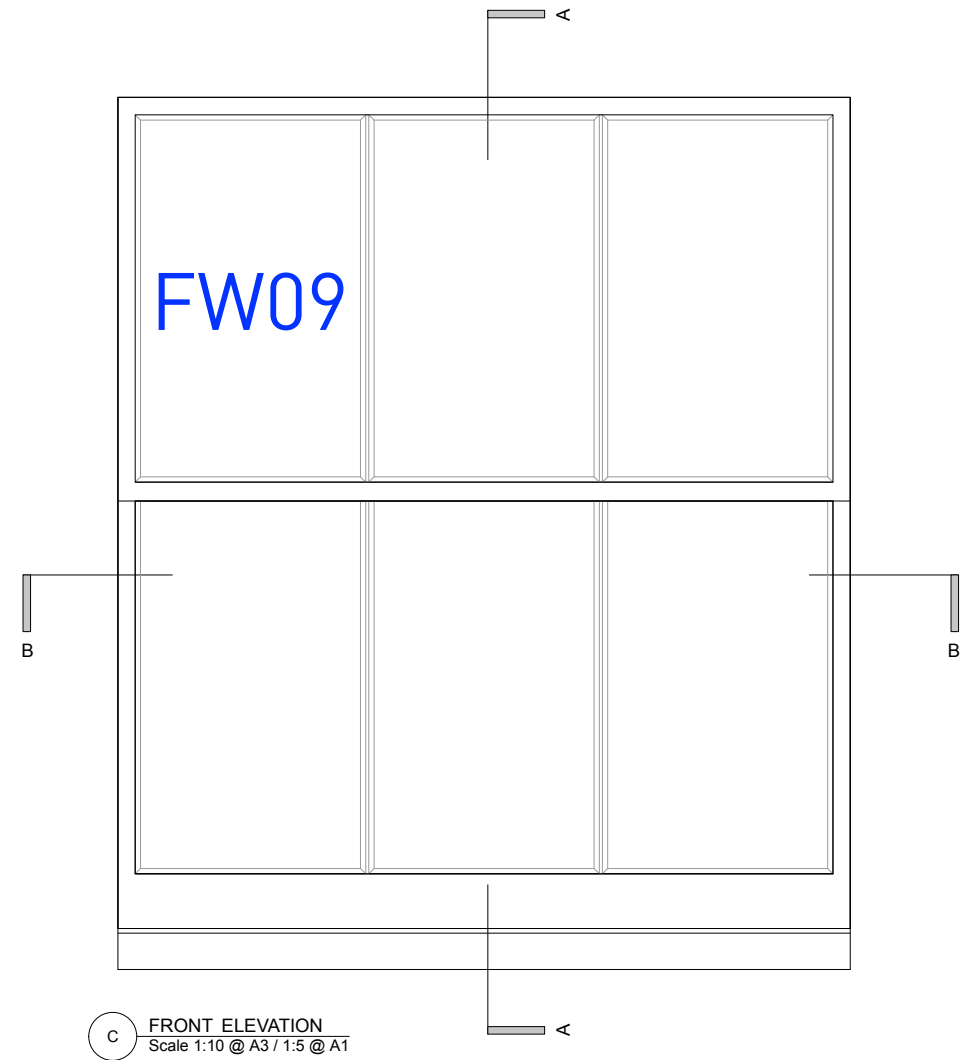
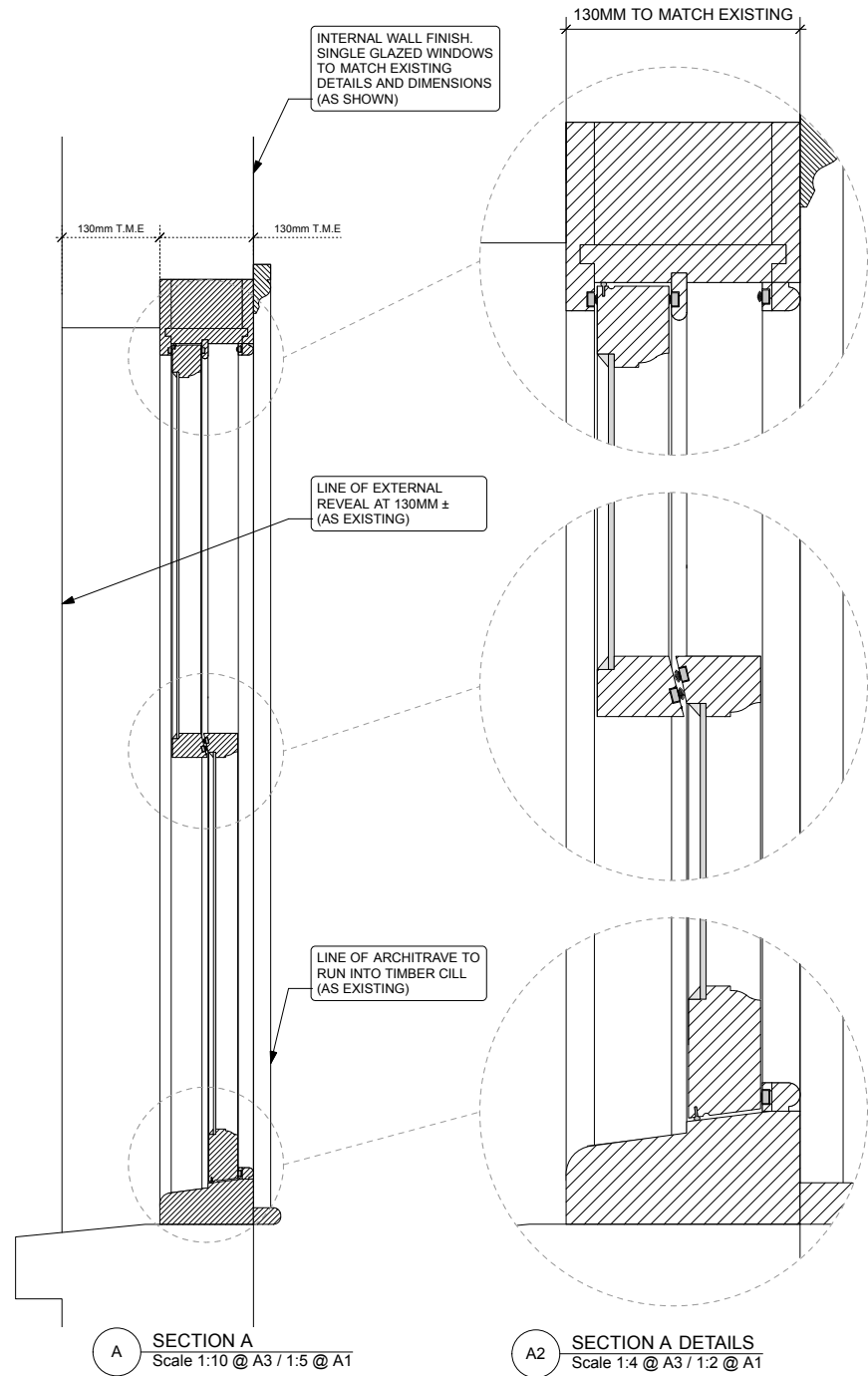


SIDE ELEVATION
(North Facing)

PARK VILLAGE EAST

<div>GENERAL NOTES:</div> <div>Do not scale from this drawing.</div> <div>Check drawing on receipt and immediately report any discrepancies to the Architect.</div> <div>Verify all dimensions and levels on site prior to construction.</div> <div>The contents of this drawing are Stiff + Trevillion Architects LLP copyright and shall not be re-used without their written permission.</div>	No. Date Revision Notes		PLANNING	<div>Stiff + Trevillion</div> <div>Stiff + Trevillion Architects LLP 16 Woodfield Road London W9 2BE</div> <div>T +44(0)20 8960 5550 F +44(0)20 8969 8668 mail@stiffandtrevillion.com www.stiffandtrevillion.com</div>	Project	36 PARK VILLAGE EAST LONDON NW1 1PZ		
	Drawing				SIDE ELEVATION (North) AS PROPOSED			
	Project No				Drawing No	Revision		
	3139				TP.2003	-		
Scale		1:50 @ A1 1:100 @ A3	Date	NOV/2012	Revised -			

NEW WINDOW TYPICAL DETAILS - TYPE A



DETAILS:

NEW SINGLE GLAZED PAINTED TIMBER SASH WINDOWS WITH ALL DETAILS TO MATCH ORIGINALS. NEW WINDOWS TO INCORPORATE CONCEALED DRAFT SEALS AND TRADITIONAL CLEAR GLAZING (TO MATCH EXISTING).

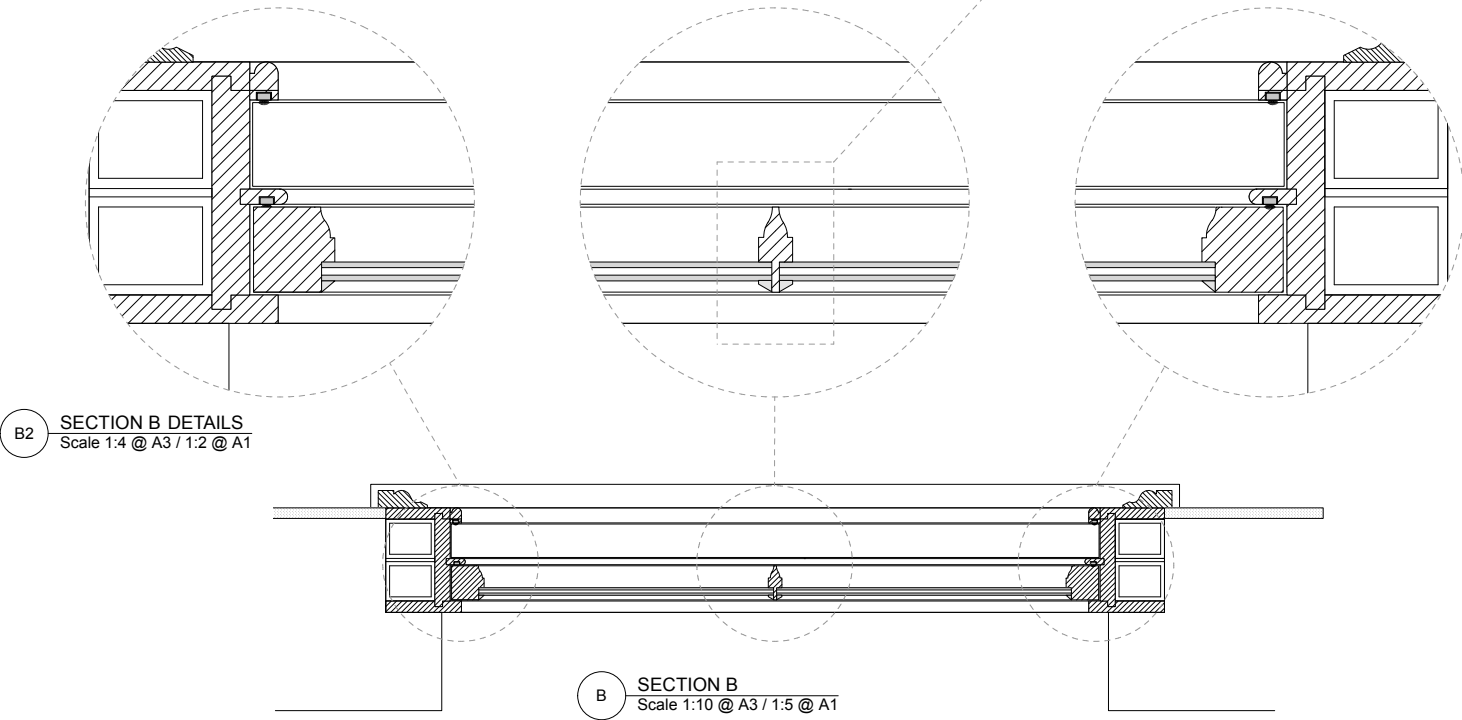
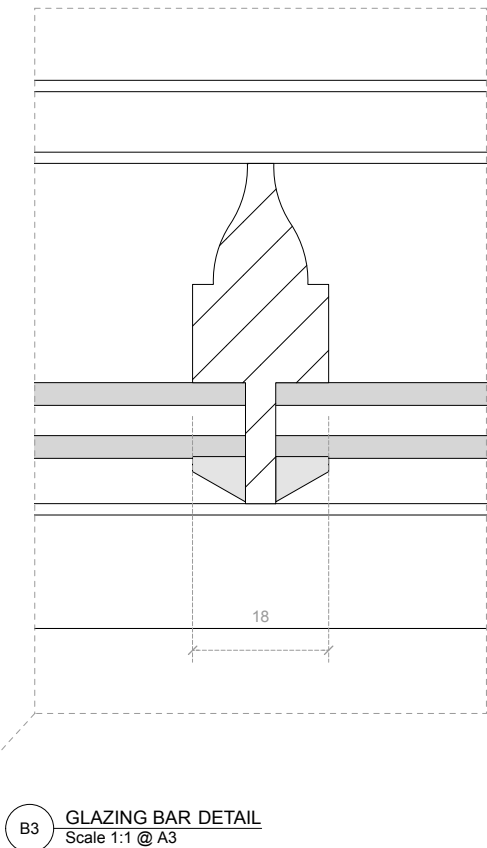
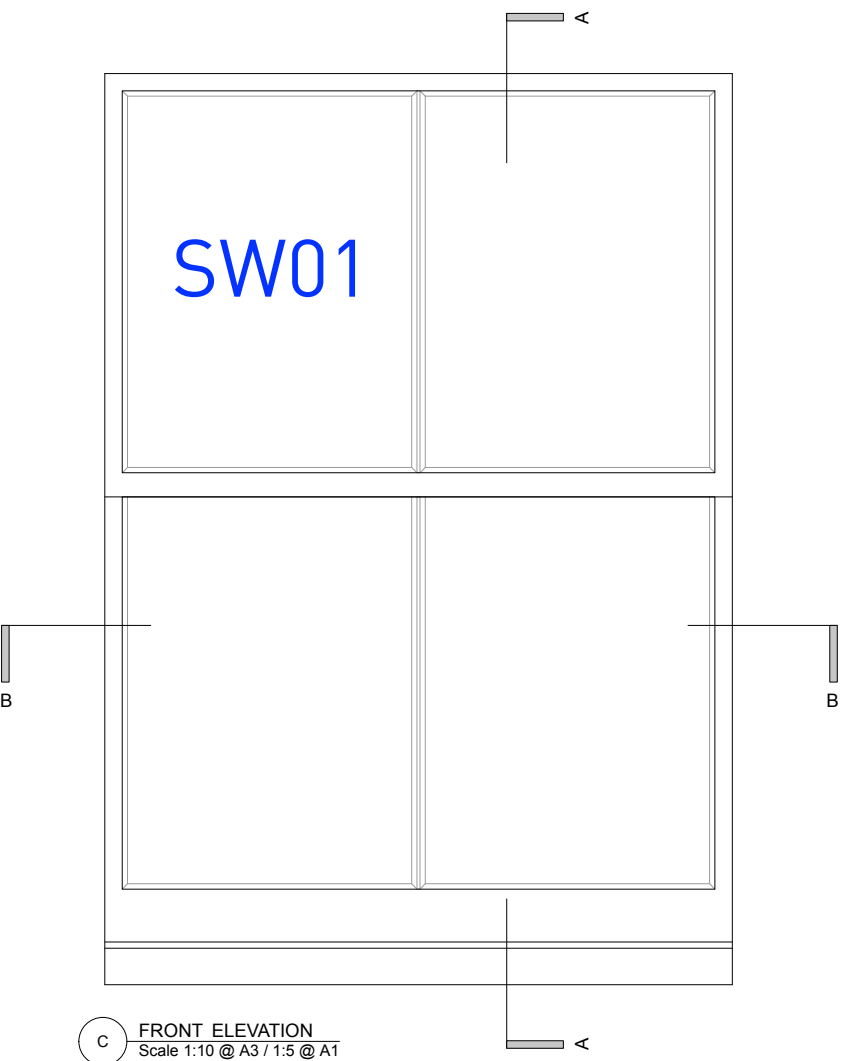
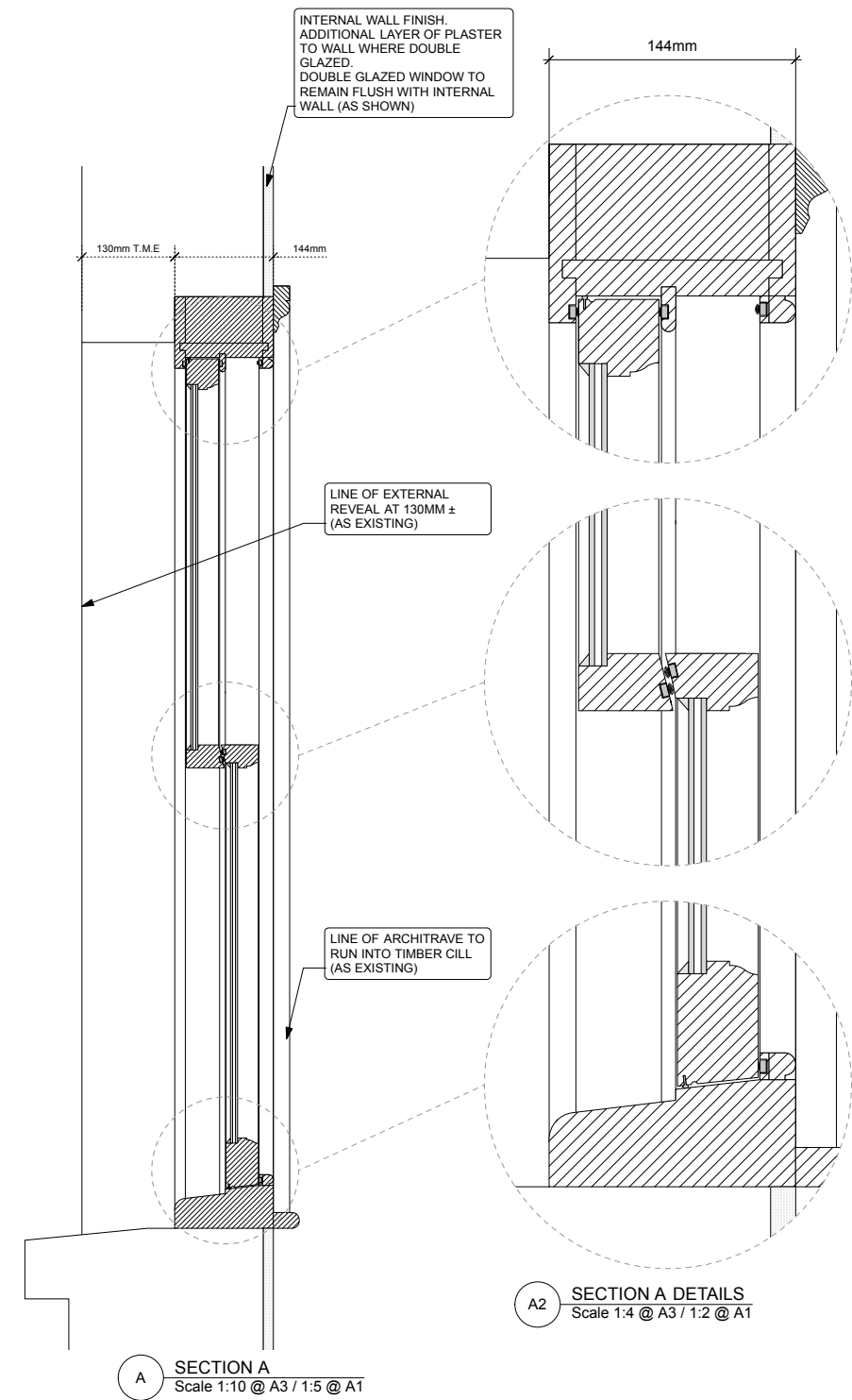
GENERAL NOTES: Do not scale from this drawing. Check drawing on receipt and immediately report any discrepancies to the Architect. Verify all dimensions and levels on site prior to construction. The contents of this drawing are Stiff + Trevillion Architects LLP copyright and shall not be re-used without their written permission.	No.	Date	Revision Notes
	A	4/3/13	Sash glazing bar updated to match existing profile. Horns removed from sashes

PLANNING

Stiff + Trevillion
Stiff + Trevillion Architects LLP
16 Woodfield Road
London W9 2BE
T +44(0)20 8960 5550
F +44(0)20 8969 8668
mail@stiffandtrevillion.com
www.stiffandtrevillion.com

Project	36 PARK VILLAGE EAST LONDON NW1 1PZ		
Drawing	WINDOW DETAILS - TYPE A AS PROPOSED		
Project No	3139	Drawing No	TP.3005
Scale	1:5/2 @ A1 1:10/4/1 @ A3	Date	NOV/2012
Revision	A	Revised	-

NEW WINDOW TYPICAL DETAILS - TYPE B

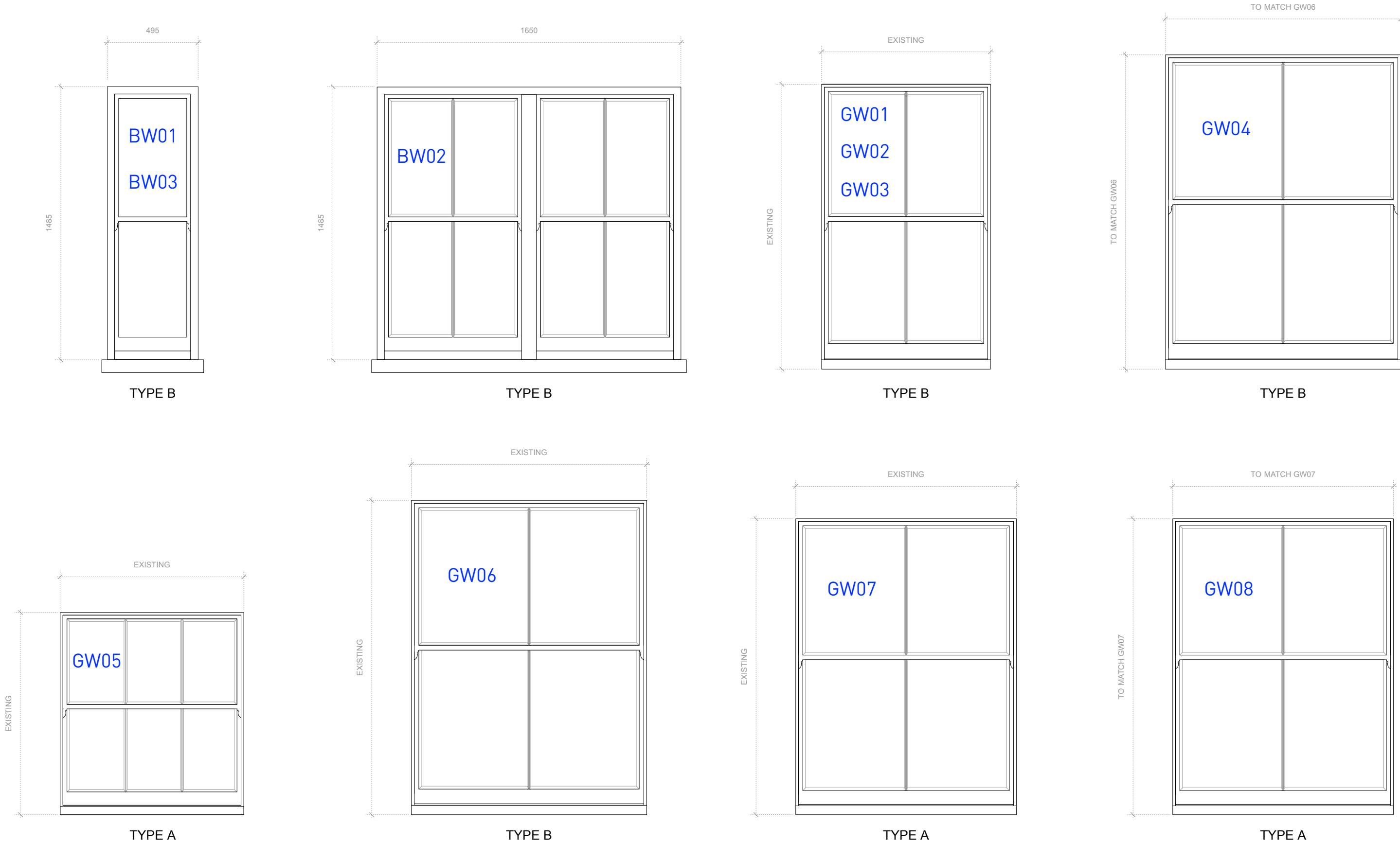


DETAILS:

NEW DOUBLE GLAZED PAINTED TIMBER SASH WINDOWS WITH DETAILS TO MATCH ORIGINALS USING SLIMLITE PLUS UNITS. NEW WINDOWS TO INCORPORATE CONCEALED DRAFT SEALS AND TRADITIONAL CLEAR GLAZING (TO MATCH EXISTING).

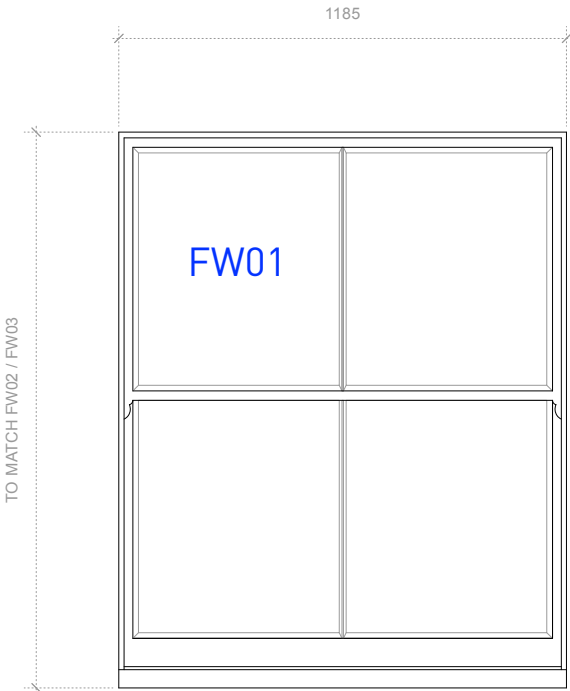
<p>GENERAL NOTES:</p> <p>Do not scale from this drawing.</p> <p>Check drawing on receipt and immediately report any discrepancies to the Architect.</p> <p>Verify all dimensions and levels on site prior to construction.</p> <p>The contents of this drawing are Stiff + Trevillion Architects LLP copyright and shall not be re-used without their written permission.</p>	No.	Date	Revision Notes	<p>PLANNING</p>	<p>Stiff + Trevillion</p> <p>Stiff + Trevillion Architects LLP 16 Woodfield Road London W9 2BE</p> <p>T +44(0)20 8960 5550 F +44(0)20 8969 8668 mail@stiffandtrevillion.com www.stiffandtrevillion.com</p>	Project	36 PARK VILLAGE EAST LONDON NW1 1PZ		
	A	4/3/13	Sash glazing bar updated to match existing profile. Horns removed from sashes			Drawing	WINDOW DETAILS - TYPE B AS PROPOSED		
						Project No	Drawing No	Revision	
						3139	TP.3006	A	
						Scale 1:5/2 @ A1 1:10/4/1 @ A3	Date NOV/2012	Revised -	

PROPOSED WINDOW SCHEDULE 1

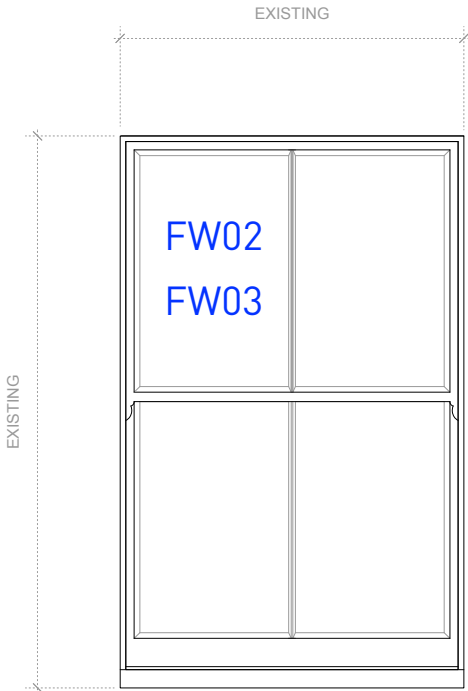


<div>GENERAL NOTES:</div> <div>Do not scale from this drawing.</div> <div>Check drawing on receipt and immediately report any discrepancies to the Architect.</div> <div>Verify all dimensions and levels on site prior to construction.</div> <div>The contents of this drawing are Stiff + Trevillion Architects LLP copyright and shall not be re-used without their written permission.</div>	No. Date Revision Notes		PLANNING	<div>Stiff + Trevillion</div> <div>Stiff + Trevillion Architects LLP</div> <div>16 Woodfield Road</div> <div>London W9 2BE</div> <div>T +44(0)20 8960 5550</div> <div>F +44(0)20 8969 8668</div> <div>mail@stiffandtrevillion.com</div> <div>www.stiffandtrevillion.com</div>	Project 36 PARK VILLAGE EAST LONDON NW1 1PZ				
	Drawing WINDOW SCHEDULE 1 AS PROPOSED				Drawing No				
	Project No 3139				Drawing No TP.3000		Revision		
	Scale 1:10 @ A1 1:20 @ A3				Date NOV/2012		Revised -		

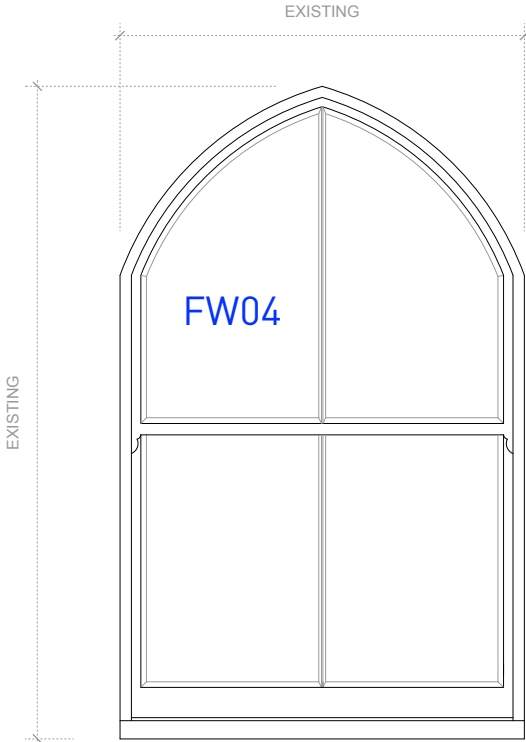
PROPOSED WINDOW SCHEDULE 2



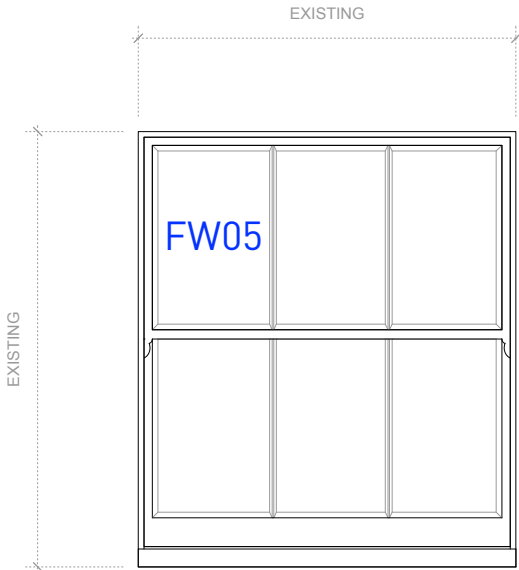
TYPE B



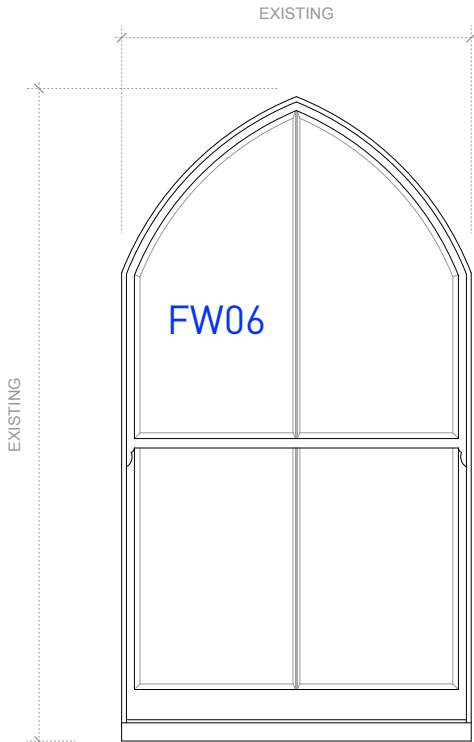
TYPE B



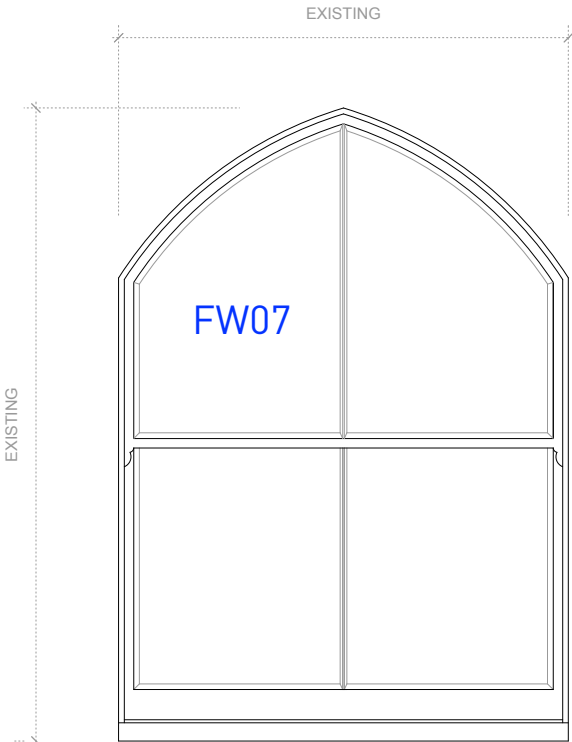
TYPE A



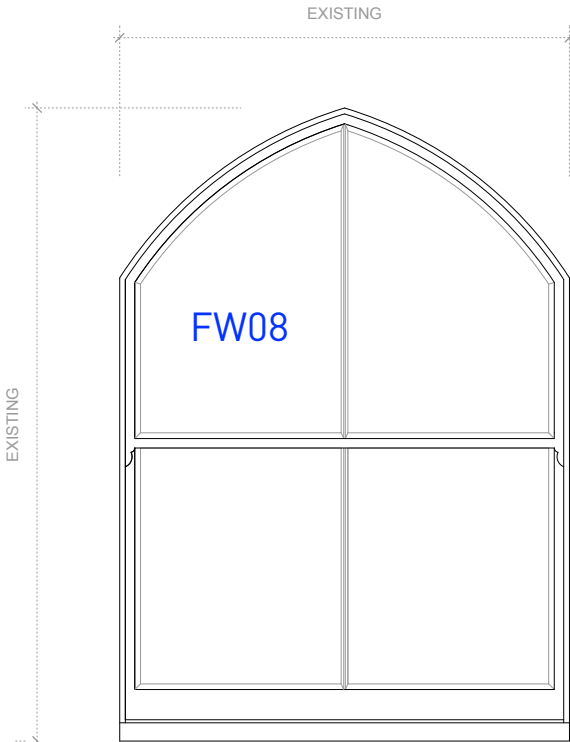
TYPE A



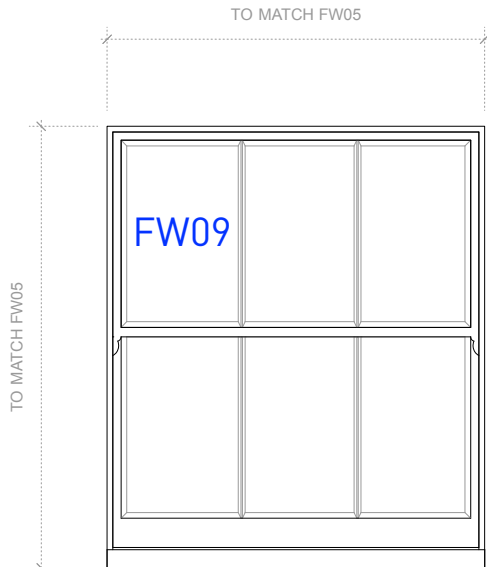
TYPE A



TYPE A



TYPE A



TYPE A

GENERAL NOTES:
Do not scale from this drawing.
Check drawing on receipt and immediately report any discrepancies to the Architect.
Verify all dimensions and levels on site prior to construction.
The contents of this drawing are Stiff + Trevillion Architects LLP copyright and shall not be re-used without their written permission.

No.	Date	Revision Notes
-----	------	----------------

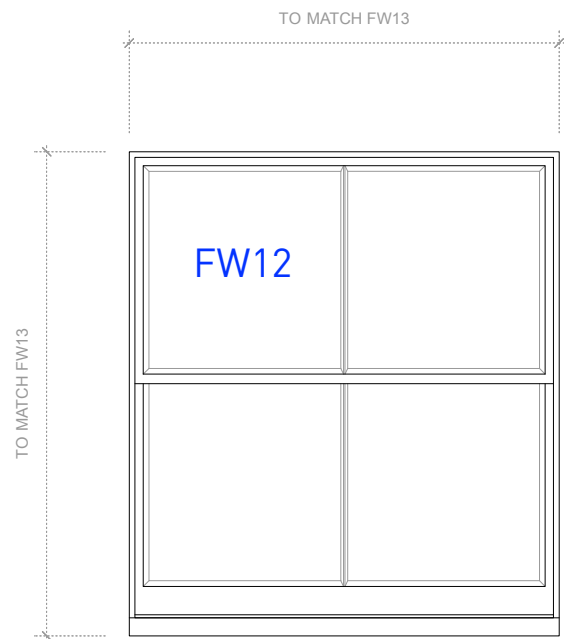
PLANNING

Stiff + Trevillion

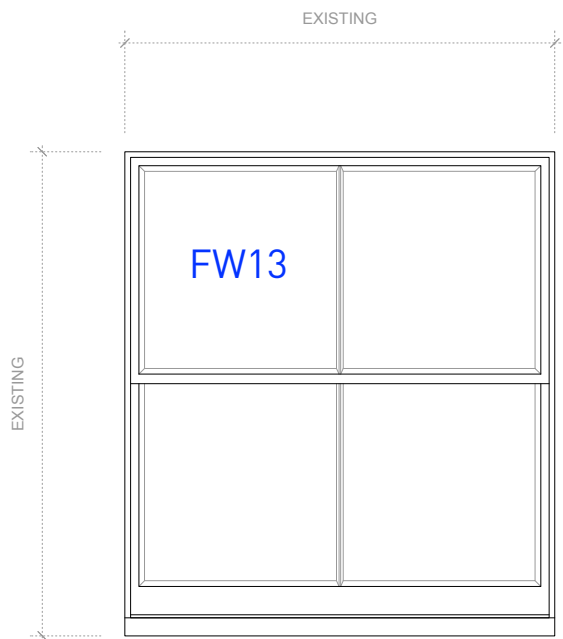
Stiff + Trevillion Architects LLP
16 Woodfield Road
London W9 2BE
T +44(0)20 8960 5550
F +44(0)20 8969 8668
mail@stiffandtrevillion.com
www.stiffandtrevillion.com

Project	36 PARK VILLAGE EAST LONDON NW1 1PZ		
Drawing	WINDOW SCHEDULE 2 AS PROPOSED		
Project No	3139	Drawing No	TP.3001
Scale	1:10 @ A1 1:20 @ A3	Date	NOV/2012
Revision	-	Revised	-

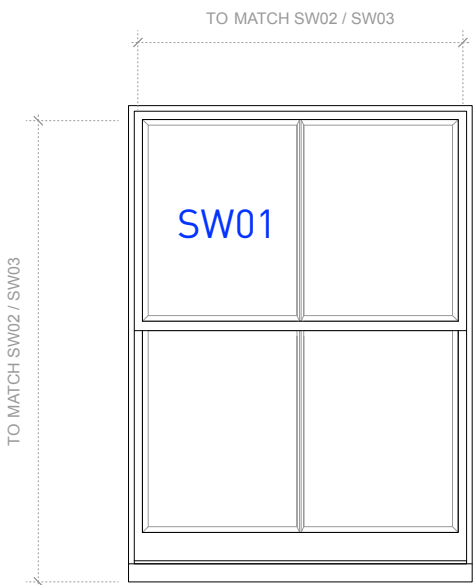
PROPOSED WINDOW SCHEDULE 3



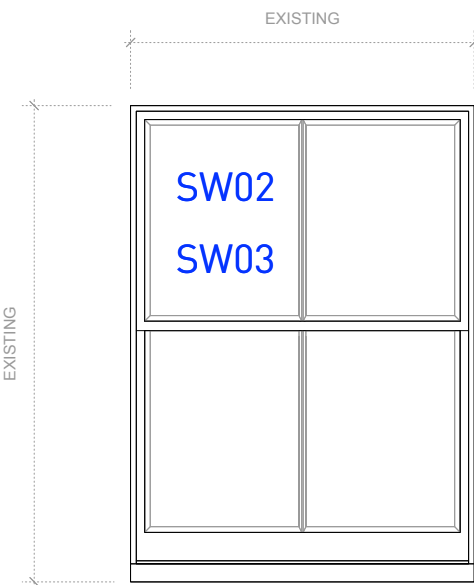
TYPE B



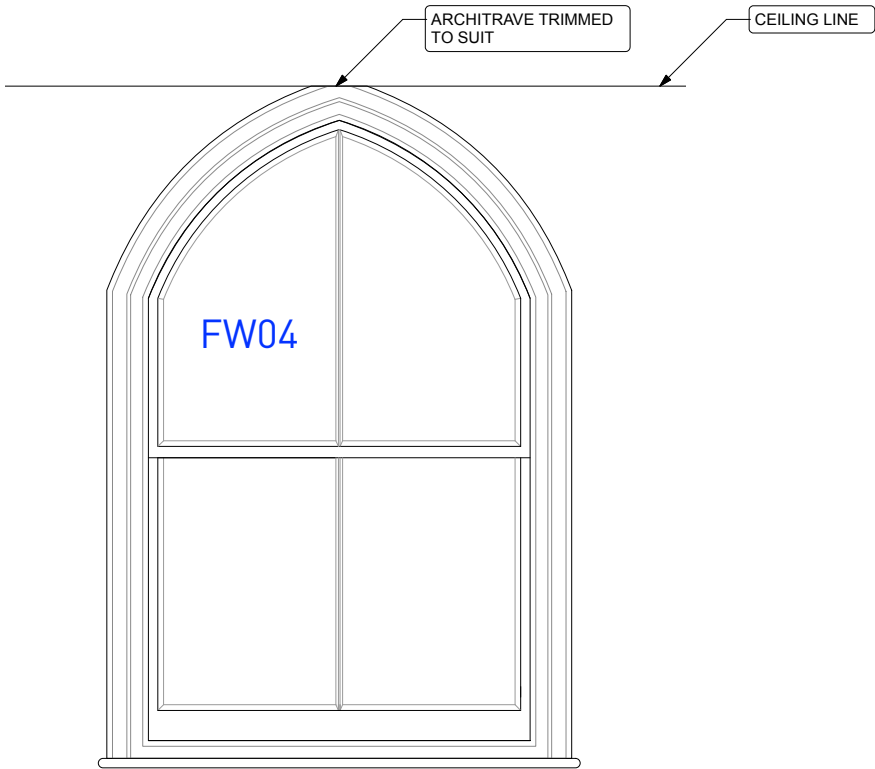
TYPE B



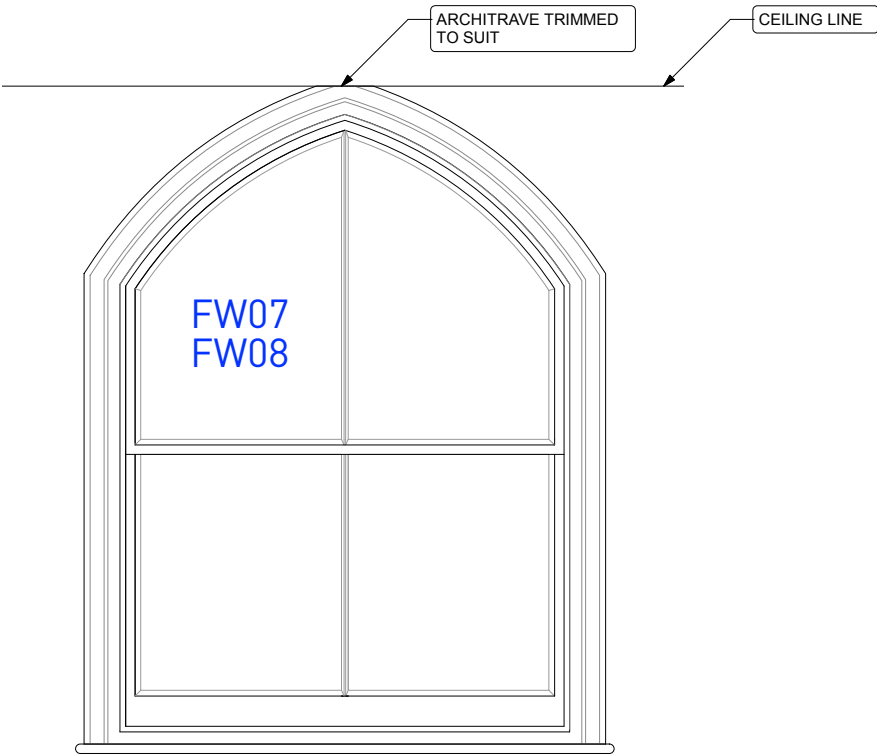
TYPE B



TYPE B



INTERNAL VIEW OF FW04 SHOWING
HOW CEILING LINE INTERSECTS WITH
WINDOW ARCHITRAVE



INTERNAL VIEW OF FW07 & FW08
SHOWING HOW CEILING LINE
INTERSECTS WITH ARCHITRAVE

GENERAL NOTES:
Do not scale from this drawing.
Check drawing on receipt and immediately report any discrepancies to the Architect.
Verify all dimensions and levels on site prior to construction.
The contents of this drawing are Stiff + Trevillion Architects LLP copyright and shall not be re-used without their written permission.

No.	Date	Revision Notes
A	4/3/13	Internal View of windows FW04, 07 and 08 added showing trimmed arched architraves at ceiling junction.

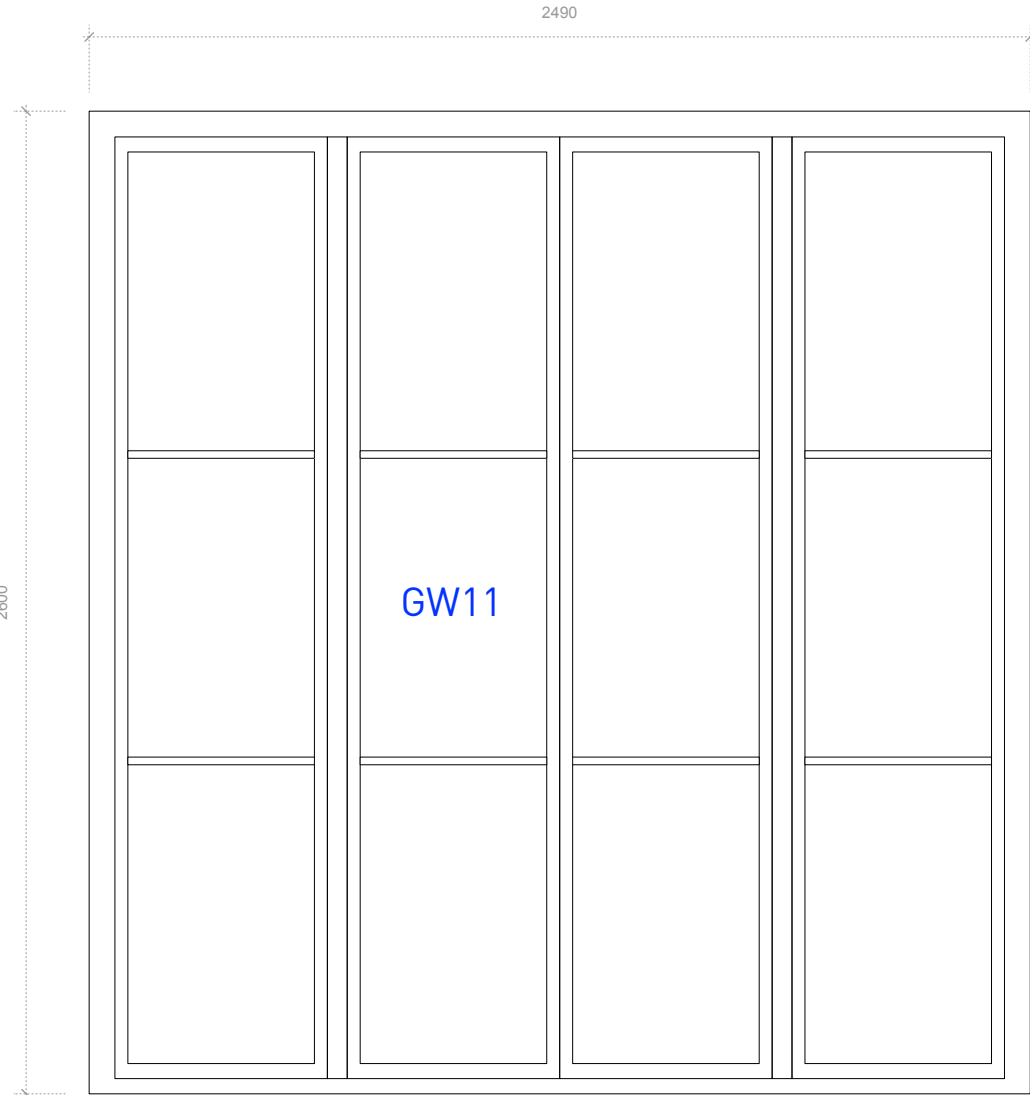
PLANNING

Stiff + Trevillion

Stiff + Trevillion Architects LLP
16 Woodfield Road
London W9 2BE
T +44(0)20 8960 5550
F +44(0)20 8969 8668
mail@stiffandtrevillion.com
www.stiffandtrevillion.com

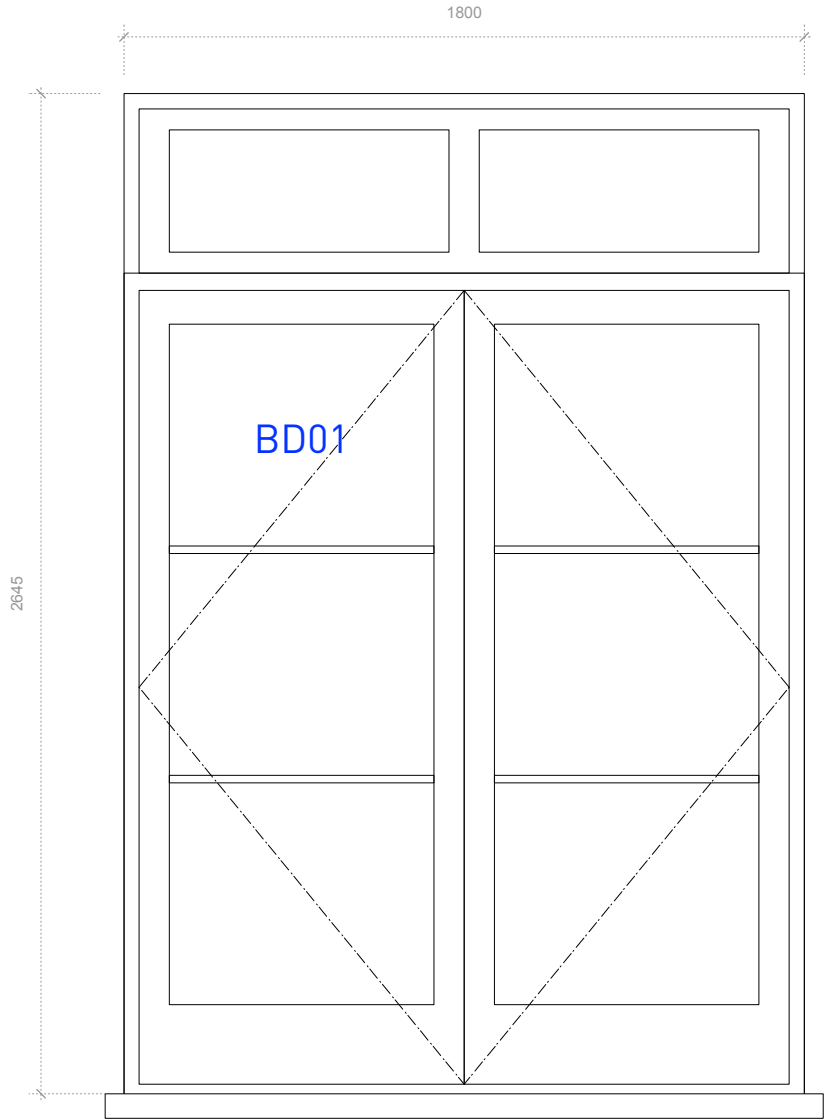
Project	36 PARK VILLAGE EAST LONDON NW1 1PZ		
Drawing	WINDOW SCHEDULE 3 AS PROPOSED		
Project No	3139	Drawing No	TP.3002
Scale	1:10 @ A1 1:20 @ A3	Date	NOV/2012
Revised	-	Revision	A

PROPOSED DOOR SCHEDULE 1



TYPE B

WINDOWS: GW11
NEW FIXED PAINTED
TIMBER WINDOW.
GLAZING BARS TO
MATCH TYPICAL
WINDOW DETAIL TYPE B

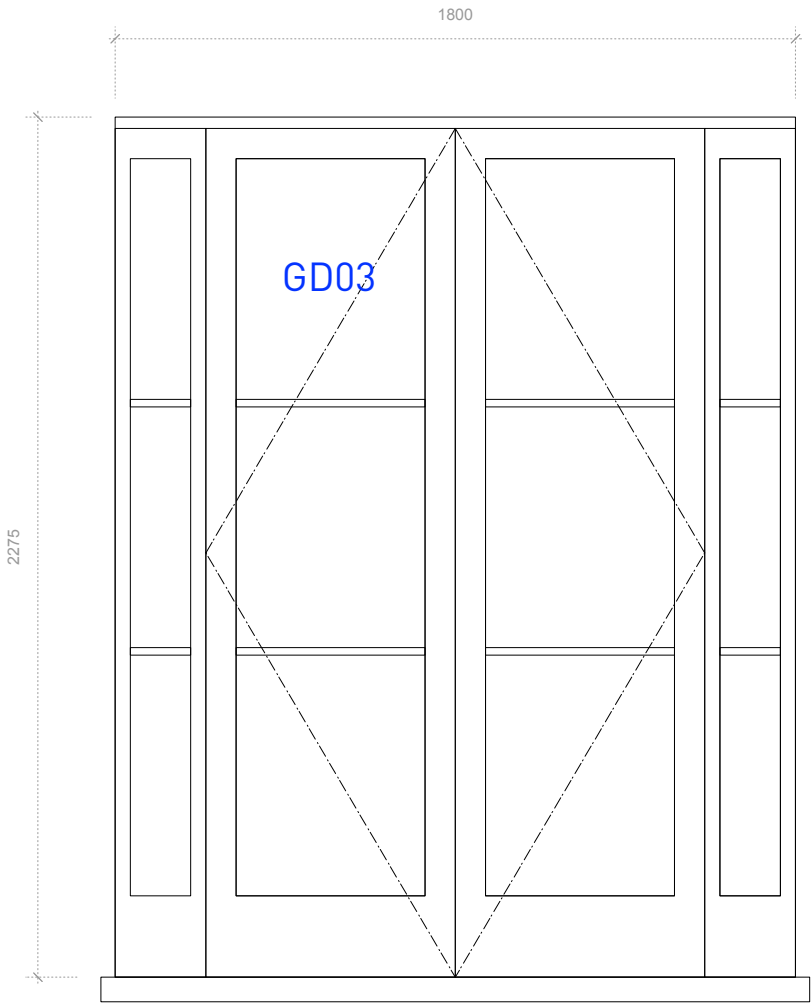


TYPE B

DOOR TYPE 1
DOORS: BD01
NEW PAINTED TIMBER
GLAZED DOORS WITH
FIXED FANLIGHT.
GLAZING BARS TO MATCH
TYPICAL WINDOW DETAIL
TYPE B

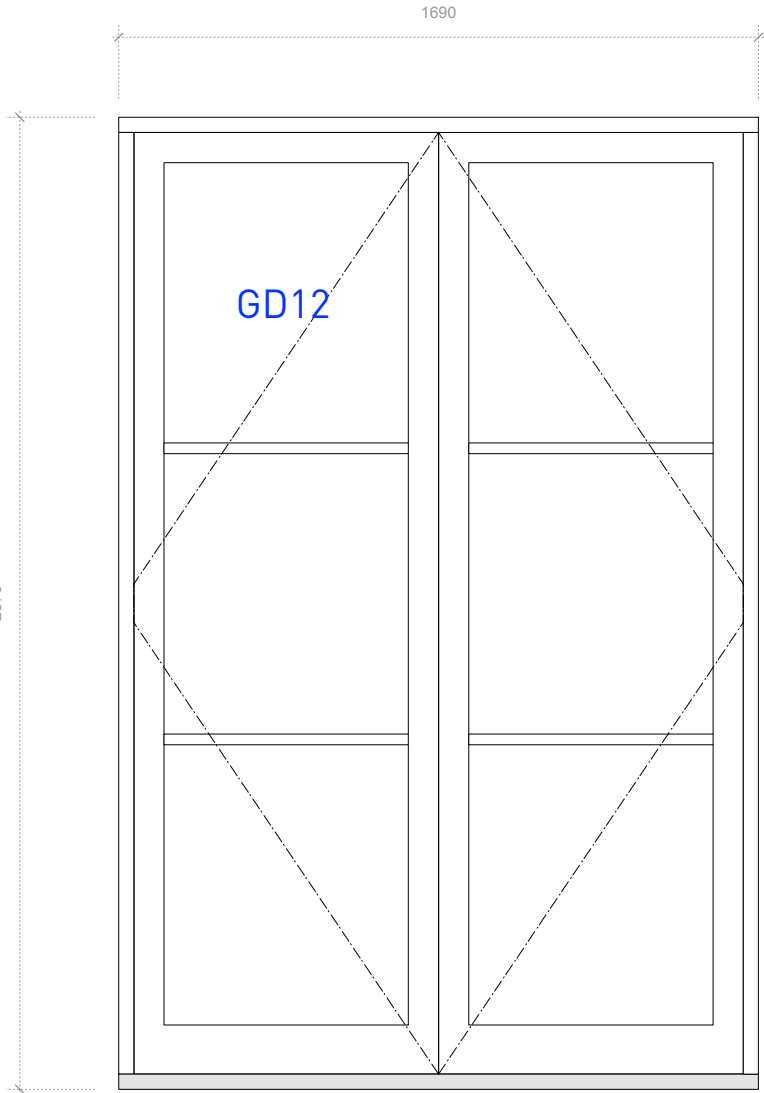
<div>GENERAL NOTES:</div> <div>Do not scale from this drawing.</div> <div>Check drawing on receipt and immediately report any discrepancies to the Architect.</div> <div>Verify all dimensions and levels on site prior to construction.</div> <div>The contents of this drawing are Stiff + Trevillion Architects LLP copyright and shall not be re-used without their written permission.</div>	No. Date Revision Notes		PLANNING	<div>Stiff + Trevillion</div> <div>Stiff + Trevillion Architects LLP 16 Woodfield Road London W9 2BE</div> <div>T +44(0)20 8960 5550 F +44(0)20 8969 8668 mail@stiffandtrevillion.com www.stiffandtrevillion.com</div>	Project 36 PARK VILLAGE EAST LONDON NW1 1PZ		
	Drawing DOOR SCHEDULE 1 AS PROPOSED						
	Project No	Drawing No			Revision		
	3139	TP.3003			-		
Scale			1:10 @ A1 1:20 @ A3	Date	NOV/2012	Revised	-

PROPOSED DOOR SCHEDULE 2



TYPE B

DOOR TYPE 13
DOOR: GD03
NEW PAINTED TIMBER
GLAZED DOORS WITH
FIXED SIDELIGHTS.
GLAZING BARS TO MATCH
TYPICAL WINDOW DETAIL
TYPE B



TYPE B

DOOR TYPE 18
DOORS: GD12
NEW PAINTED TIMBER
GLAZED DOORS.
GLAZING BARS TO MATCH
TYPICAL WINDOW DETAIL
TYPE B

<div>GENERAL NOTES:</div> <div>Do not scale from this drawing.</div> <div>Check drawing on receipt and immediately report any discrepancies to the Architect.</div> <div>Verify all dimensions and levels on site prior to construction.</div> <div>The contents of this drawing are Stiff + Trevillion Architects LLP copyright and shall not be re-used without their written permission.</div>	No. Date Revision Notes		PLANNING	<div>Stiff + Trevillion</div> <div>Stiff + Trevillion Architects LLP 16 Woodfield Road London W9 2BE T +44(0)20 8960 5550 F +44(0)20 8969 8668 mail@stiffandtrevillion.com www.stiffandtrevillion.com</div>	Project36 PARK VILLAGE EAST LONDON NW1 1PZ		
	DrawingDOOR SCHEDULE 2 AS PROPOSED						
	Project No	Drawing No			Revision		
	3139	TP.3004			-		
Scale1:10 @ A1 1:20 @ A3			DateNOV/2012	Revised-			