

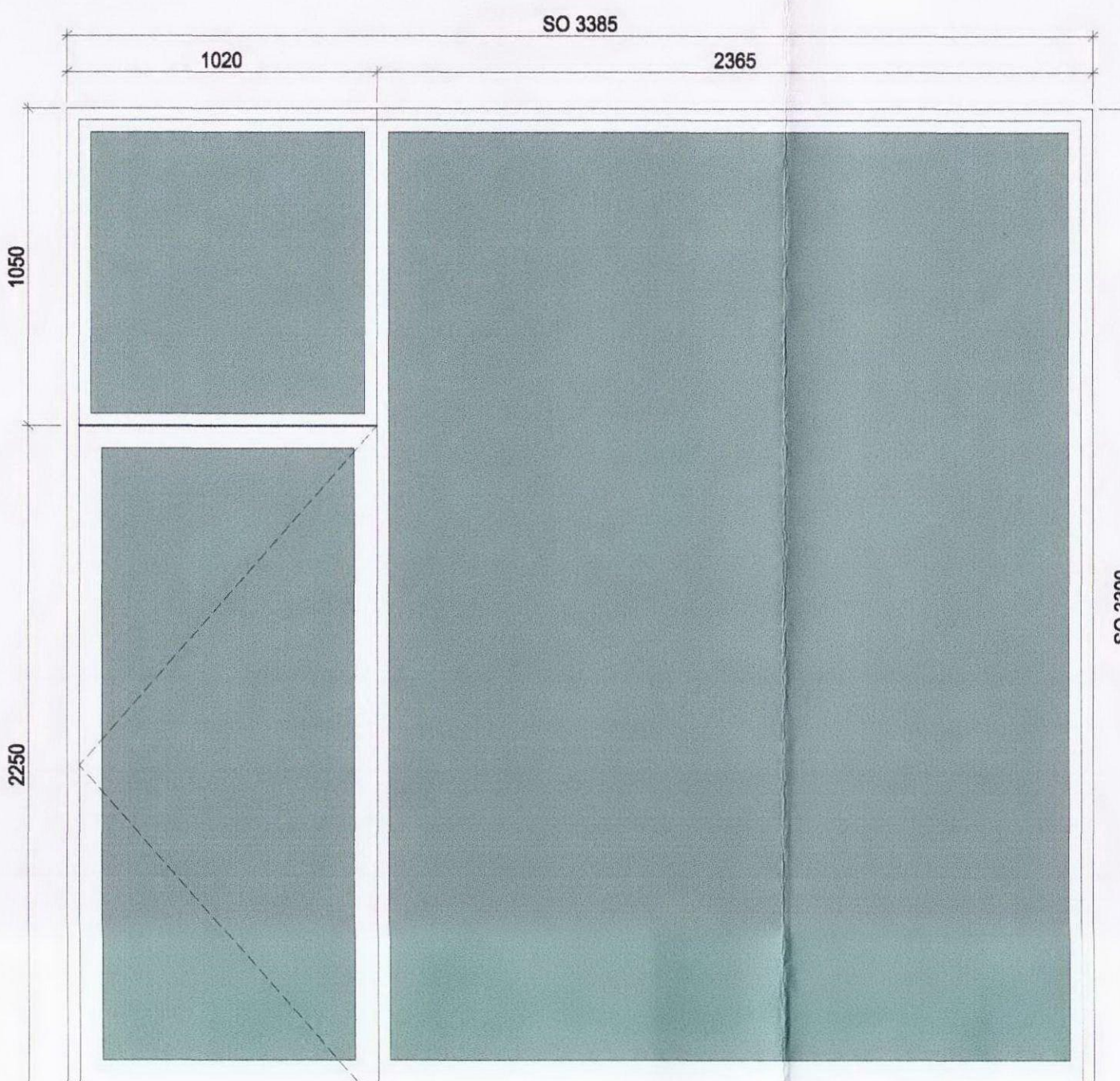
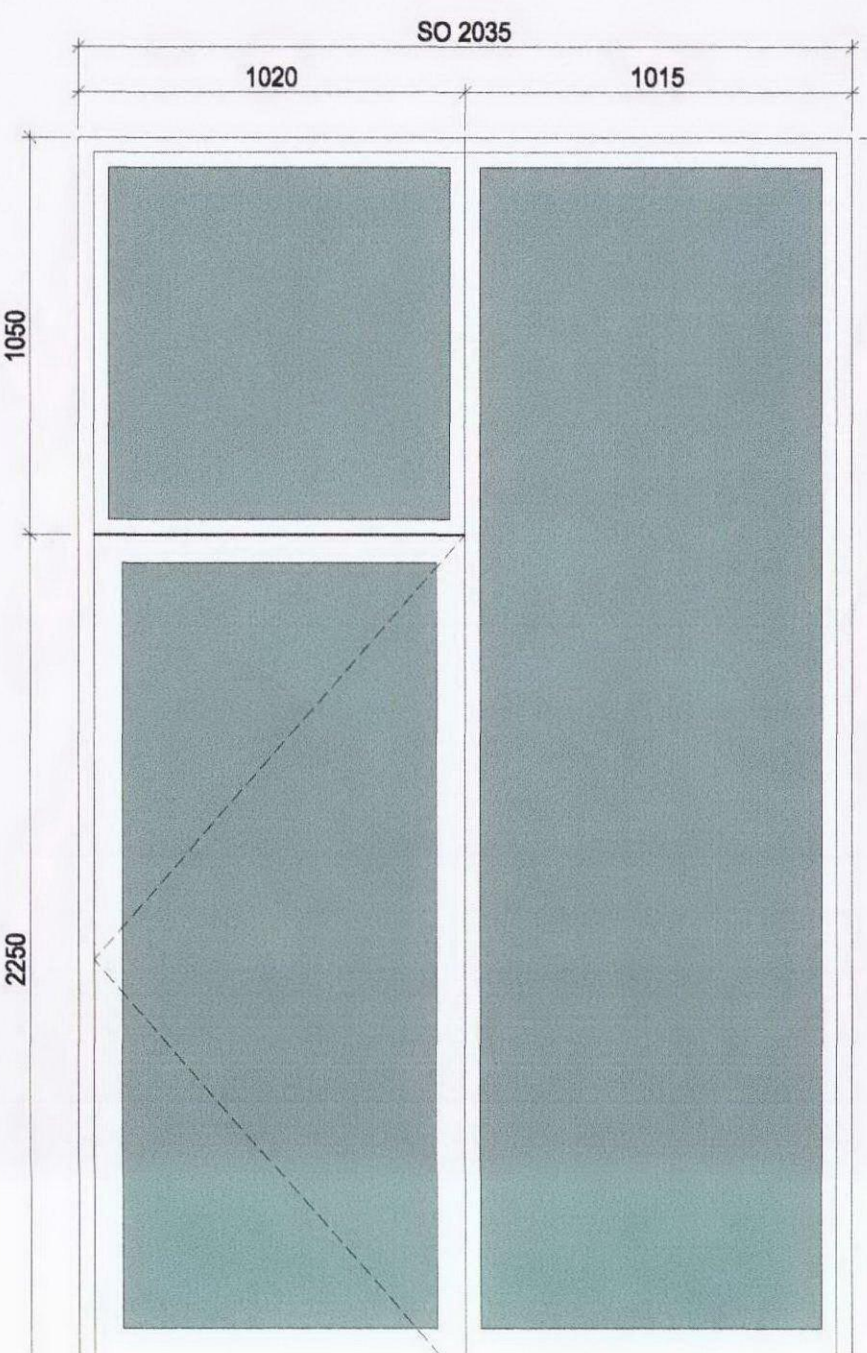
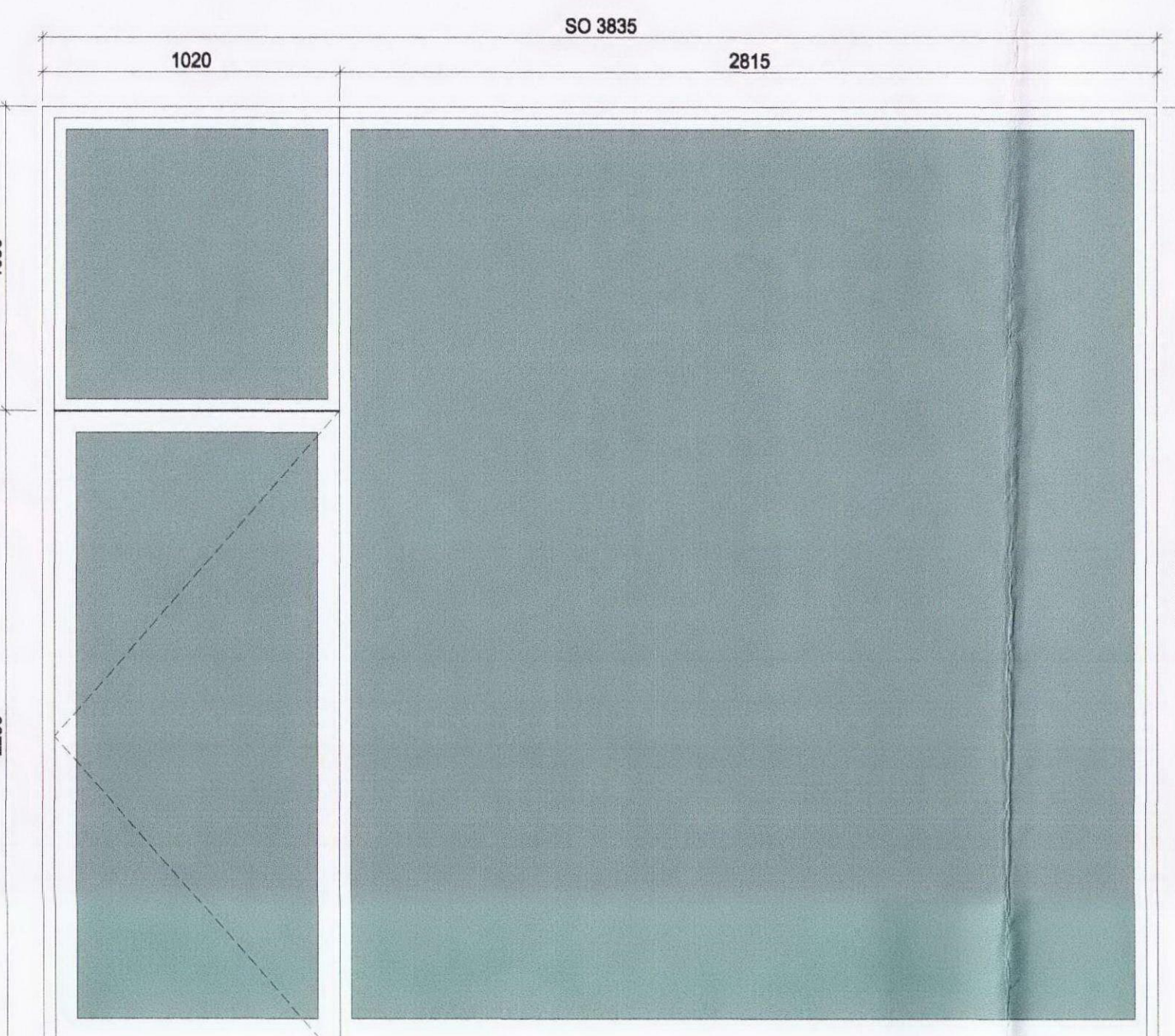
DO NOT SCALE DIMENSIONS OFF THIS DRAWING
CHECK ALL DIMENSIONS ON SITE BEFORE FABRICATION
REPORT ALL ERRORS OR OMISSIONS TO SPRUNT LIMITED
THIS DRAWING IS PROTECTED UNDER COPYRIGHT AND
SHALL NOT BE REPRODUCED IN PART OR WHOLE WITHOUT
PRIOR EXPRESSED PERMISSION OF SPRUNT LIMITED

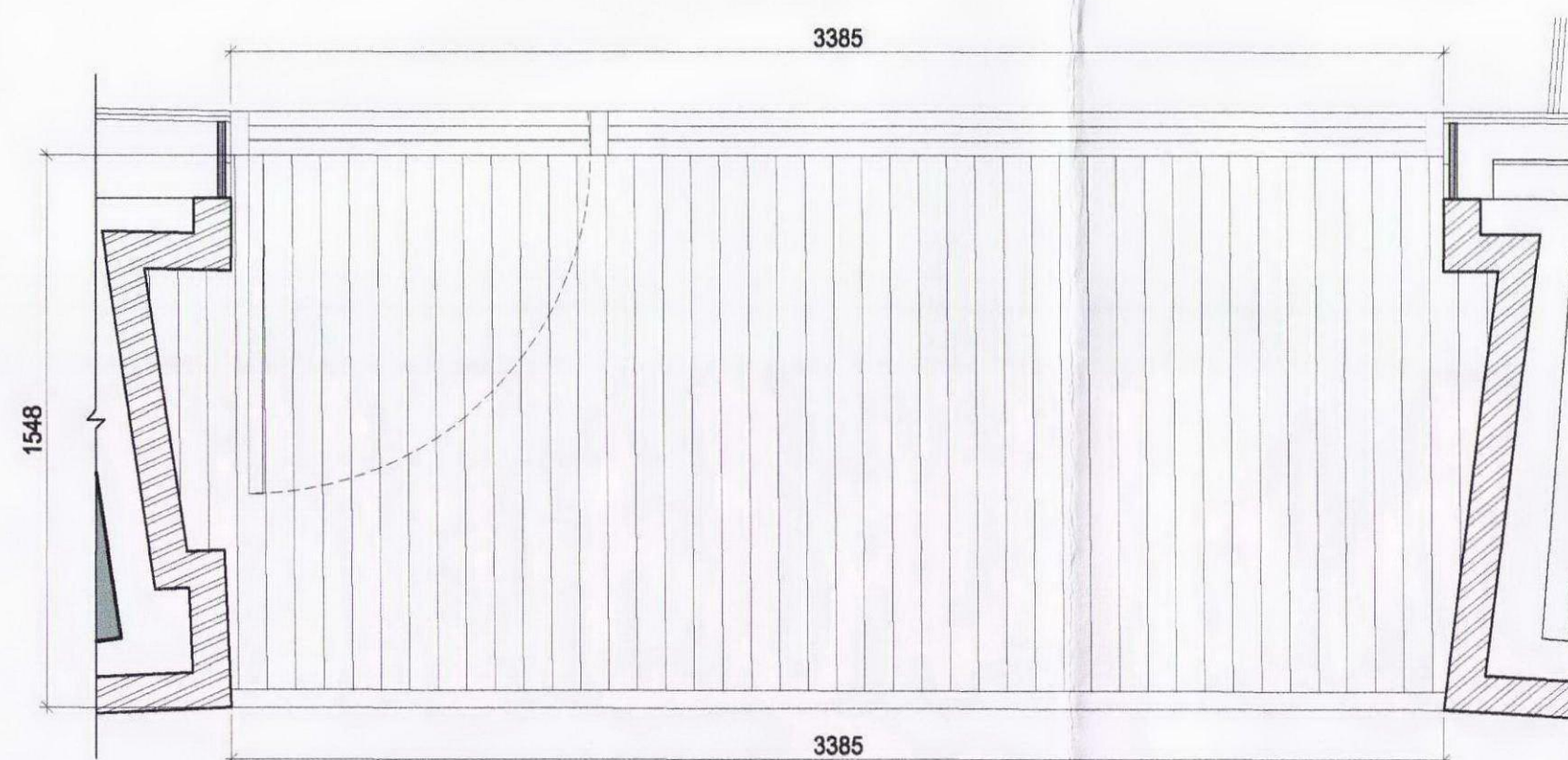
SERIES DEFINITION

- 05 - SITE PLANS
- 10 - BRICK & BLOCKWORK
- 11 - PENETRATIONS
- 12 - FLOOR FINISHES
- 15 - GENERAL ARRANGEMENTS
- 16 - DIMENSIONAL LAYOUT PLANS
- 17 - FIRE STRATEGY AND SIGNAGE
- 20 - SECTIONS
- 25 - HEIGHT RODS
- 30 - ELEVATIONS
- 40 - DETAILS
- 41 - BALCONY DETAILS
- 42 - STAIR DETAILS
- 43 - LIFT DETAILS
- 44 - ROOF DETAILS
- 45 - KITCHEN DETAILS
- 46 - THRESHOLD DETAILS
- 47 - INTERNAL WALL DETAILS
- 48 - EXTERNAL WALL DETAILS
- 50 - DOOR & WINDOW SCHEDULES
- 51 - CLEANING STRATEGY
- 70 - CONVEYANCE PLANS
- 90 - LANDSCAPING
- 95 - LANDSCAPING DETAILS

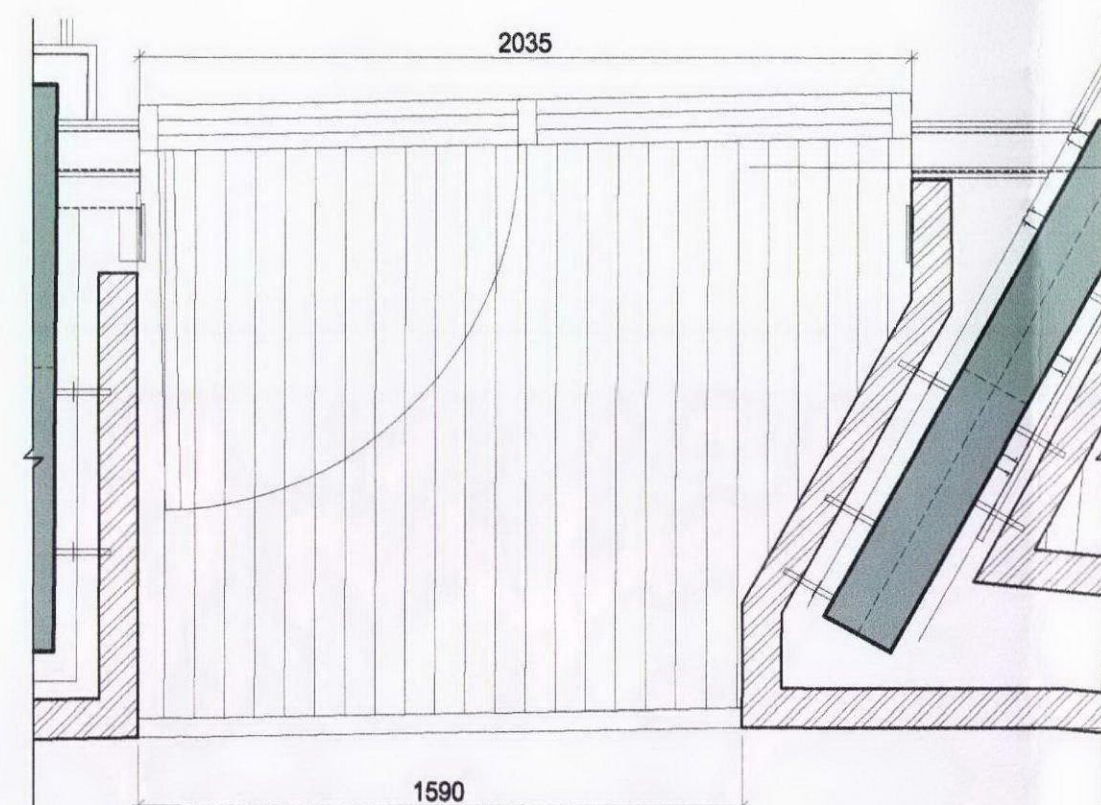
NOTE:

- DOOR / WINDOW TOTALS TO BE CHECKED BY SUB-CONTRACTOR
- TO BE READ IN CONJUNCTION WITH DRAWINGS: 12387_10_01 TO 12387_10_14 AND DRAWINGS: 12387_30_01 TO 12387_30_04
- ALL DOOR & WINDOW ELEVATIONS ARE EXTERNAL
- PERFORATED/VENTILATION PANELS: METAL PANEL/ LOUVER TO BE DESIGNED IN ACCORDANCE WITH BS 6399-1:1996 TABLE 4A TO WITHSTAND 0.5KN/M² UNIFORMLY DISTRIBUTED LOAD, 0.25KN POINT LOAD AND 0.36KN/M HORIZONTAL LINE LOAD.
- ALL WINDOWS FACING CAMDEN ROAD & 10m ALONG REGENTS CANAL ELEVATION NOISE ATTENUATION:
 - 44dB (BEFORE CHANGE OF CONDITION)
 - 37dB (AFTER CHANGE OF CONDITION)
 - ALL OTHER WINDOWS 32dB
- WINDOWS INDICATED TO HAVE HIGHER NOISE ATTENUATION 44dB MAY BE REDUCED TO 37dB AFTER THE LB CAMDEN APPROVAL FOR CHANGE OF PLANNING CONDITION NO. 12.

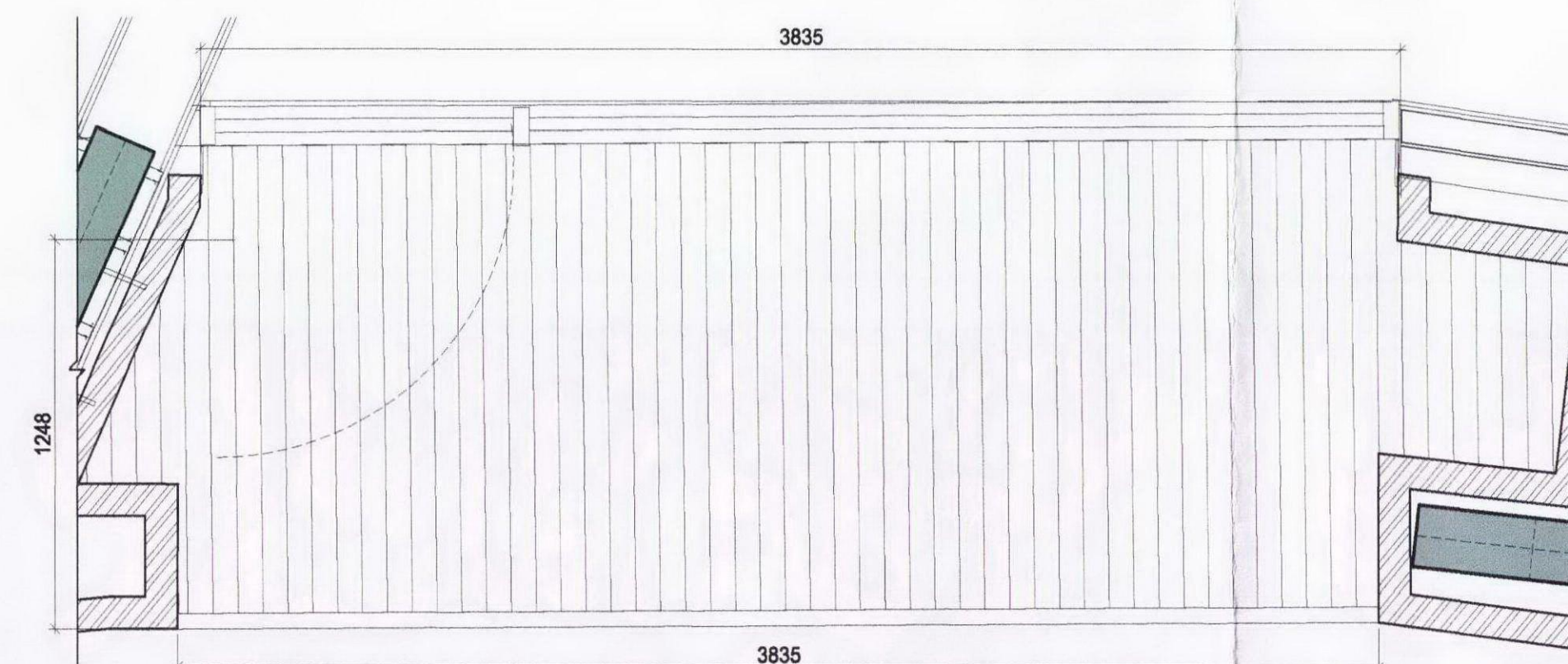
ELEVATION FFL SCALE 1:20			
	STANDARD WINDOW	EXTERNAL DOOR / WINDOW	EXTERNAL DOOR / WINDOW
	WINDOW REF. TYPE: EW - 12	EW-16	EW-17
	STRUCTURAL OPENING SIZE: 3385mm x 2250mm LEAF SIZE: 1020mm x 2250mm LOUVER SIZE: - FINISH: POWDER-COATED ALUMINIUM (COLOUR TBC) GLAZING: DOUBLE GLAZING AS PER SPECIFICATION OBSCURE: - TRICKLE VENTS: - FIRE RATING (MINS): - SMOKE SEALS: - INTUMESCENT STRIP: - HINGES (NO. PAIRS): - TOTAL NO.: 1 + 1 HANDED = 2	2035mm x 3300mm 1020mm x 2250mm - POWDER-COATED ALUMINIUM (COLOUR TBC) DOUBLE GLAZING AS PER SPECIFICATION - - - - AS PER MANUFACTURER SPECIFICATION & DETAIL 1	3835mm x 3300mm 1020mm x 2250mm - POWDER-COATED ALUMINIUM (COLOUR TBC) DOUBLE GLAZING AS PER SPECIFICATION - - - - AS PER MANUFACTURER SPECIFICATION & DETAIL 1
	NOTES: RECESSED, OPENS TO TERRACE	RECESSED, OPENS TO TERRACE	RECESSED, OPENS TO TERRACE



TYPICAL PLAN VIEW TO ILLUSTRATE DOOR OPENINGS.
TERRACE TYPE E
NOTE: TERRACE SIZES VARY - REFER TO 41 SERIES BALCONY SCHEDULE FOR SIZES



TYPICAL PLAN VIEW TO ILLUSTRATE DOOR OPENINGS.
TERRACE TYPE G
NOTE: TERRACE SIZES VARY - REFER TO 41 SERIES BALCONY SCHEDULE FOR SIZES



TYPICAL PLAN VIEW TO ILLUSTRATE DOOR OPENINGS.
TERRACE TYPE H
NOTE: TERRACE SIZES VARY - REFER TO 41 SERIES BALCONY SCHEDULE FOR SIZES

C2	KJ	12.12.12	MB	GENERAL AMMENDMENTS
C1	SB	30.11.12	MB	ISSUE FOR CONSTRUCTION
REV	BY	DATE	CHK	DESCRIPTION

STATUS

FOR CONSTRUCTION

CONTRACTOR

WILLMOTT DIXON

PROJECT

TWYMAN HOUSE

CLIENT

TAYLOR WIMPEY
CENTRAL LONDON

DRAWING TITLE

EXTERNAL WINDOW SCHEDULE

DATE CREATED 12.12.12	DATE AMENDED 12.12.12	SCALE 1:20 @ A1
DRAWN BY DD	AMENDED BY KAVITA	CHECKED MB

DRAWING NO & REVISION
12387_50_27-C2

The Quadrangle,
180 Wardour Street,
London W1F 8FY
T +44 (0)20 7287 1153
F +44 (0)20 7287 3675
www.sprunt.net

sprunt.

ver 2.2