

41/42 CHESTER TERRACE, LONDON, W1
APPENDIX A
PHOTOGRAPHS



Photo 1 – Chester Terrace Location



Photo 2 – Street View from Regents Park Outer Circle



Photo 3 – View from Chester Terrace



Photo 4 - No. 41 Side Exit



Photo 5 - No. 41 Chiller compound



Photo 6 – No. 42 Vaults

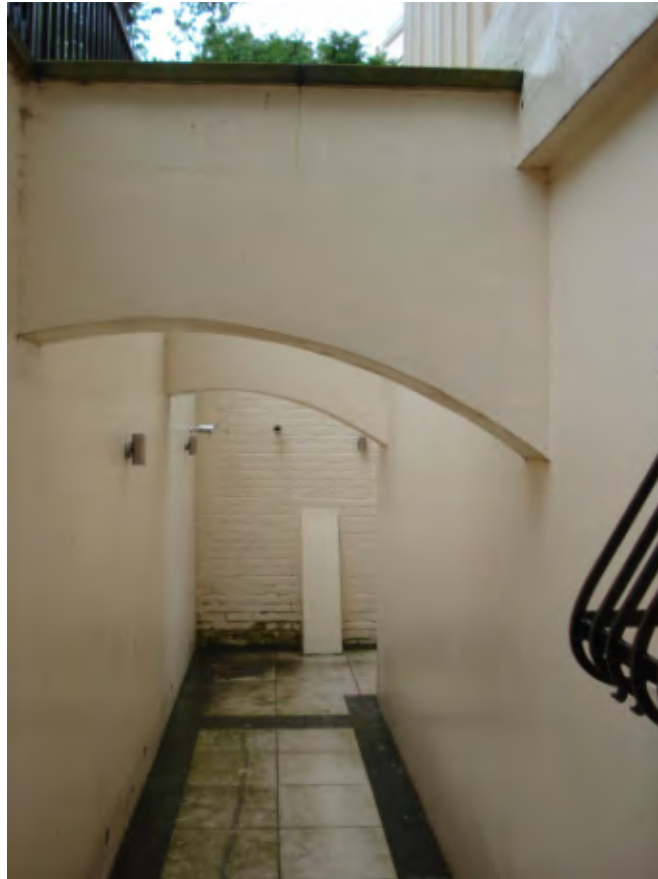


Photo 7 – No. 41 Light well



Photo 8 – No. 41 Light well

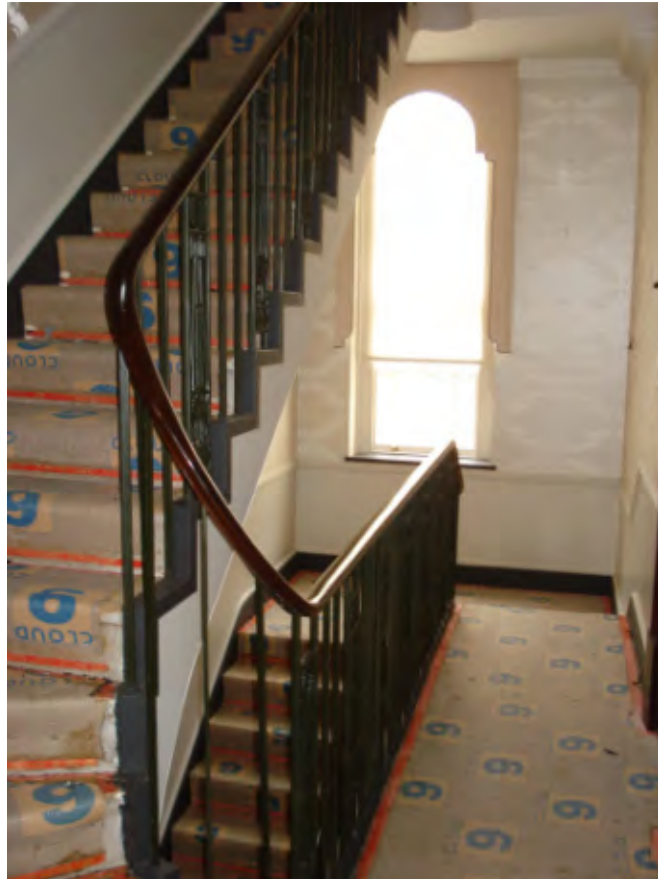


Photo 9 – No. 42 Staircase



Photo 10 – No. 42 First Floor Front Room



Photo 11 – No. 42 Roof primary truss



Photo 12 – No. 42 Roof primary truss



Photo 13 –No. 42 Roof corner rafters



Photo 14 – No. 42 Side of lift enclosure walls



Photo 15 – Timber roof rafters and purlin, party wall behind



Photo 16 – Edge of the roof, connection to masonry wall



Photo 17 – No. 42 Roof main truss top connection



Photo 18 – No. 42 Roof main truss bottom connection



Photo 19 – No. 41 Rooflight over staircase



Photo 20 – No. 41 Rooflight enclosure



Photo 21 – No. 41 Roof corner – primary and secondary trusses



Photo 22 – No. 41 Primary truss bottom chord



Photo 23 – No. 41 Lift enclosure with old truss trimmed around the walls, secondary truss



Photo 24 – No. 41 Secondary truss and loft access hatch



Photo 25 – No. 41 Secondary truss and roof rafters trimmed around rooflight



Photo 26 – No. 41 Timber joists supported on primary truss



Photo 27 – Metal joist hanger (1960's)



Photo 28 – No. 42 Second floor overlay to structural floor to achieve sensible window cill height



Photo 29 – Fletton brick repair (1960's)



Photo 30 – Timber stair detail



Photo 31 – Fletton brickwork to stair enclosure (1960's)



Photo 32 – Timber floor to stair 2nd floor landing (1960's)



Photo 33 – No. 42 Roof level lift motor room



Photo 34 – Third floor timber floor – north fletton brickwork to external wall (1960's)



Photo 35 – Cracking to chiller compound wall



Photo 36 – Bulge and cracking of chiller compound wall



Photo 37 – View of chiller compound (No.41) and top of subterrean room (no. 42) from garden level