

## Planting Specification

### Plant List;

Sedum 'Purple Emporer'  
 Euphorbia myrsinites  
 Stipa tenuissima  
 Dryopteris affinis 'Crispa Gracilis'  
 Sempervivum calcareum  
 Rosmarinus prostratus  
 Thymus  
 Lactuca  
 Iris confusa  
 Olea europea  
 Hedera  
 Planted at a density of 25 plugs per square metre

### Insects attracted;

Lepidoptera, large order of insects that includes moths and butterflies encompassing moths and the three superfamilies of butterflies, skipper butterflies, and moth-butterflies. Including also Spurge Hawk-moths and Giant Leopard Moth. Stipa are found in grasslands and support a vast variety of small mammals, reptiles, birds, and insects. Native bees.

### Drought tolerant;

The green roof plants chosen are drought tolerant once established and survive well in full sun

### Maintenance;

Bi-annual inspection and weeding replanting any redundant specimens.  
 After 2 seasons flora should be self maintaining requiring annual inspection only

Planting to be provided, installed and maintained by The Botanical Gardener, 14a Salvin Road, London, SW15 1DR

Bauder wild floor blanket 30mm

Bauder extensive substrate 100mm

Bauder filter fleece

Bauder DSE20 board 20mm

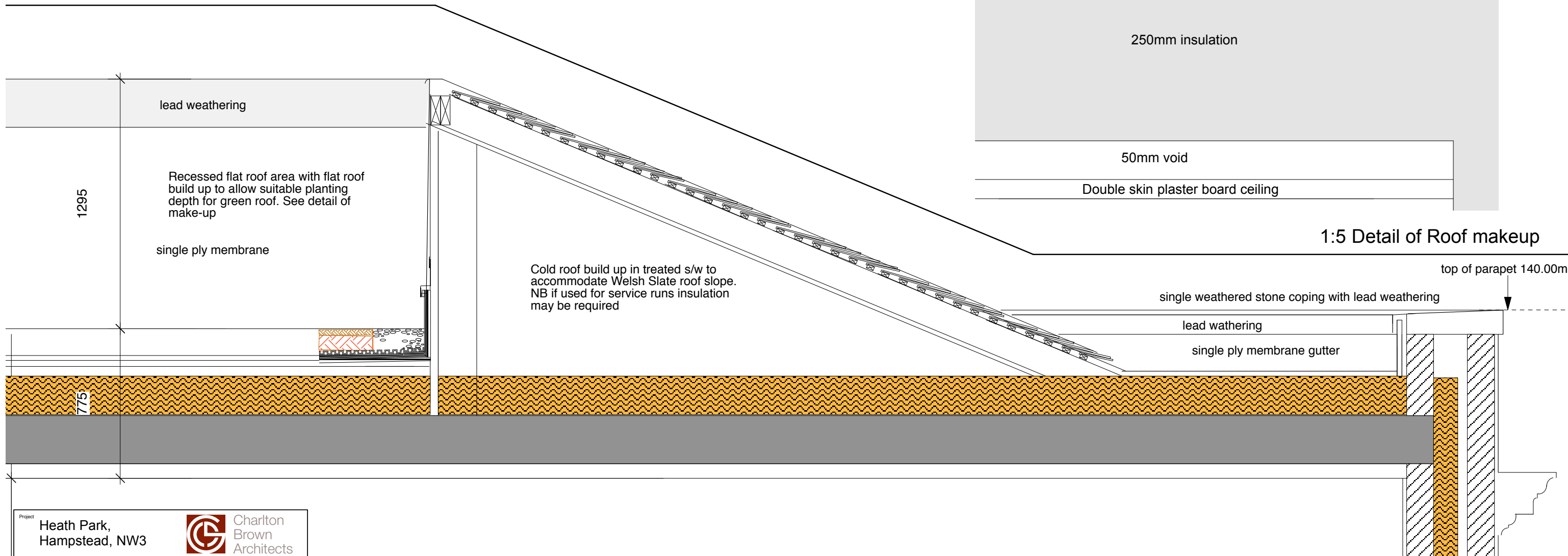
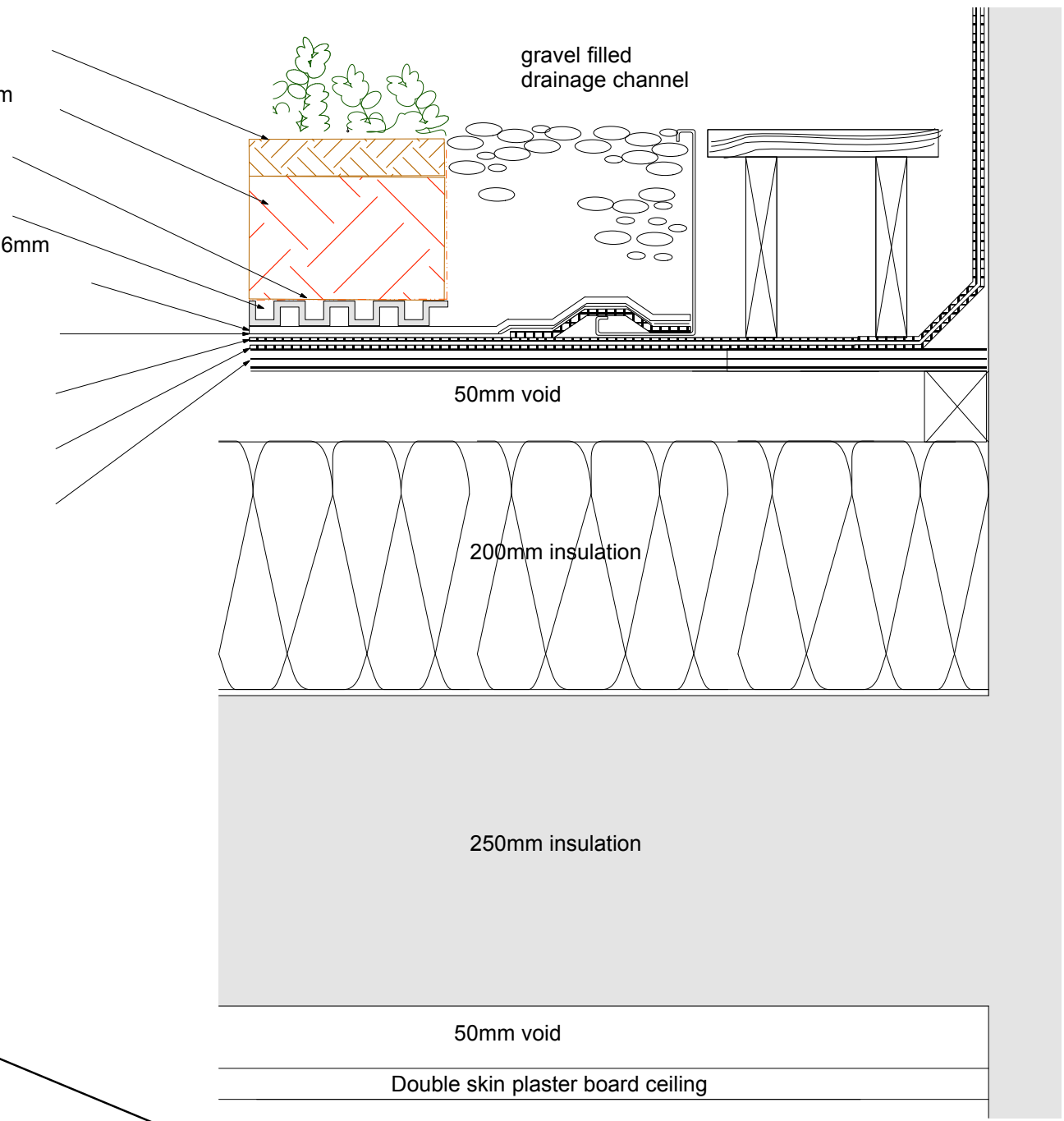
Bauder FSM600 protection fleece 6mm

Bauder PE foil as slip layer

Bauder capping sheet 5mm

Bauder G4E underlayer 4mm

Structural deck



Project  
 Heath Park,  
 Hampstead, NW3



Charlton  
 Brown  
 Architects

Title  
 Proposed Roof Details

Number  
 1017/RoC/Roof/02

Date 12.08.11 Scale This drawing is copyright 1:5 & 1:20 @ A2 Revisions

1:20 Detail of Roof makeup