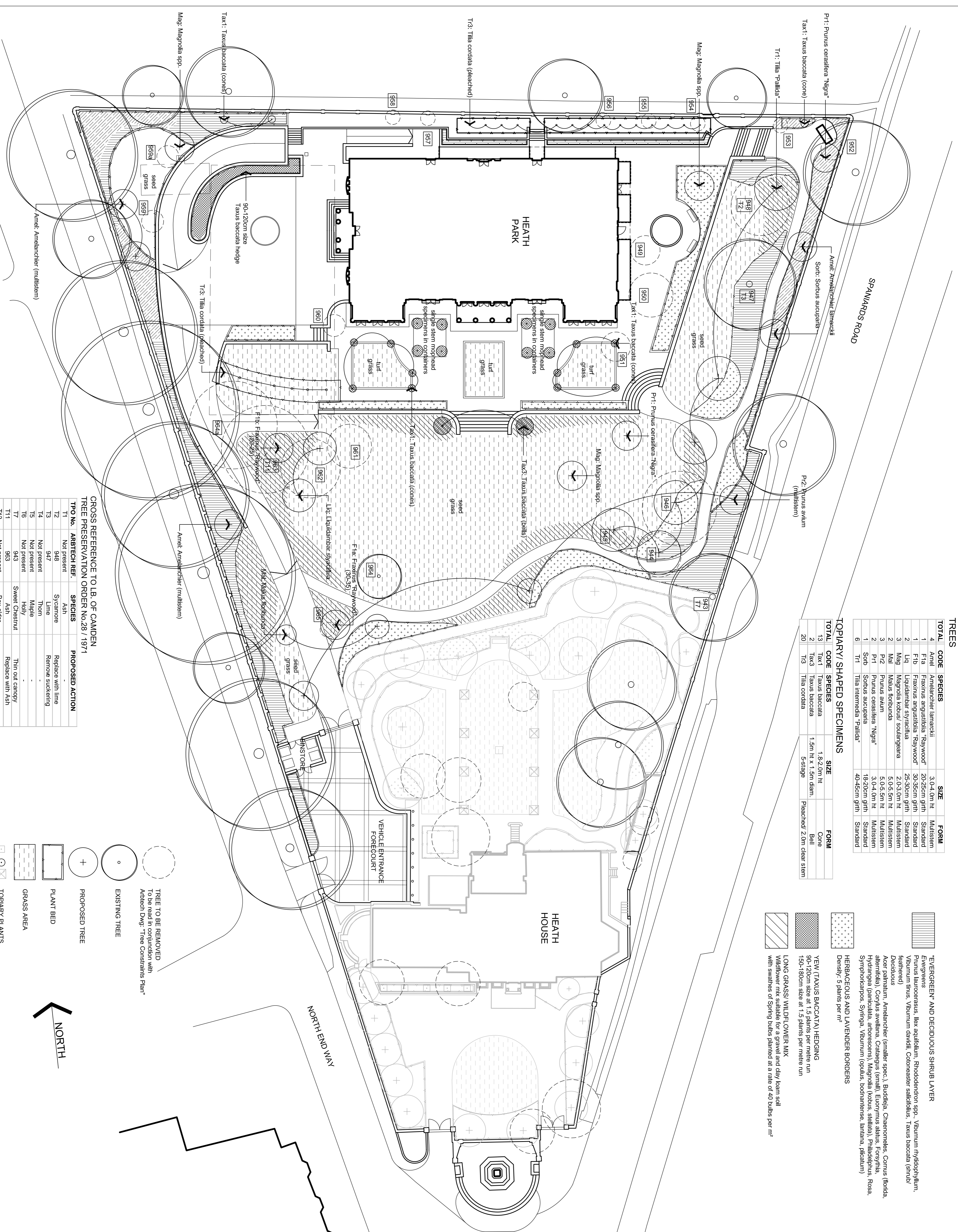


TREES	TOTAL	CODE	SPECIES	SIZE	FORM
	4	Ame1	Amelechier lamackii	3.0-4.0m ht	Multistem
	1	F1a	Faxinus angustifolia 'Raywood'	20-25cm girth	Standard
	1	F1b	Faxinus angustifolia 'Raywood'	30-35cm girth	Standard
	2	Liq	Liquidambar styraciflua	25-30cm girth	Standard
	3	Maj	Magnolia kobus/soulangiana	2.0-3.0m ht	Multistem
	2	Maj	Magnolia kobus/soulangiana	5.0-5.5m ht	Multistem
	3	P12	Pinus sylvatica	5.0-5.5m ht	Multistem
	2	P11	Pinus caespitosa 'Nigra'	3.0-4.0m ht	Multistem
	1	Sob1	Sorbus aucuparia	18-20cm girth	Standard
	6	T11	Tilia nemoralis 'Palidula'	40-45cm girth	Standard

TOPIARY SHAPED SPECIMENS				
TOTAL	CODE	SPECIES	SIZE	FORM
13	Tax1	Taxus baccata	1.9-2.0m ht	Cone
2	Tax3	Taxus baccata	1.5m ht x 1.5m diam	Bell
20	T13	Tilia cordata	3-stage	Preached/ 2.0m clear stem

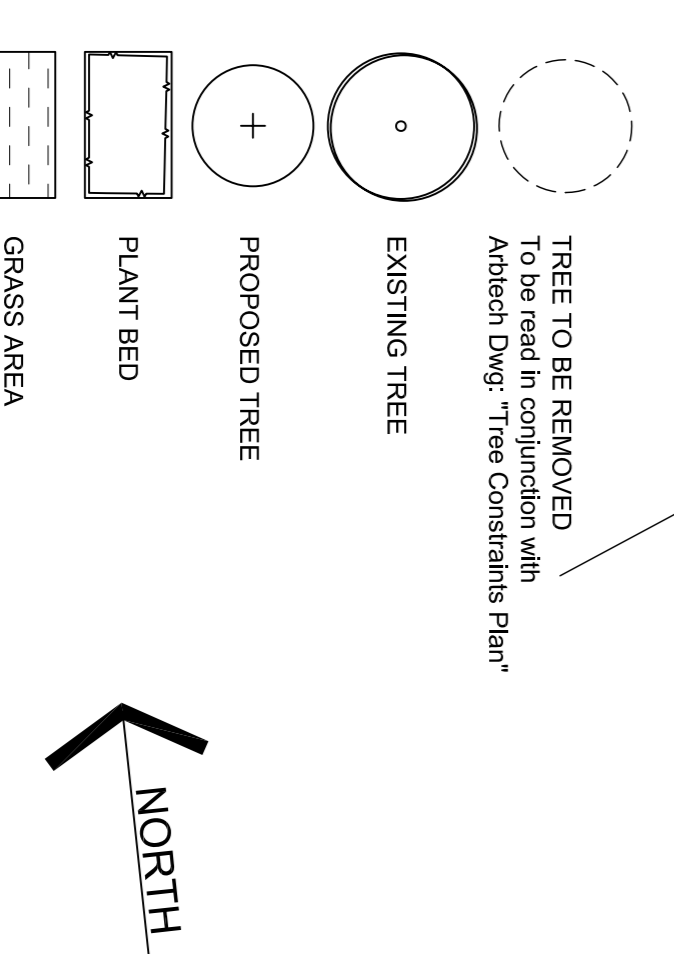
- EVERGREEN AND DECIDUOUS SHRUB LAYER**
- Evergreens:* Prunus buxocerasus, Ilex aquifolium, Rhododendron spp., Viburnum rhytidophyllum, Viburnum thurs, Viburnum davidii, Cotoneaster salicifolius, Taxus baccata (shrub feature)
- Deciduous:* Acer palmatum, Amelechier (smaller spec.), Butydia, Chaenomeles, Cornus (florida, florida), Corylus avellana, Cotoneaster (small), Cytisus striatus, Philadelphus, Symplocos, Spirea, Viburnum (opulus, bodnantense, lantana, plicatum)
- HERACIUMS AND LAVENDER BORDERS**
- Density: 5 plants per m²

- YEW (TAXUS BACCATA) HEDGING**
- 90-120cm size at 1.5 plants per metre run
- 150-180cm size at 1.5 plants per metre run
- LONG GRASS WILDFLOWER MIX**
- Wildflower mix suitable for a gravel and clay beam soil with swales of Spring bulbs planted at a rate of 40 bulbs per m²

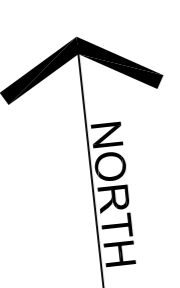


CROSS REFERENCE TO L.B. OF CAMDEN TREE PRESERVATION ORDER No.28 / 1971

TPO No.	ARBTECH REF.	SPECIES	PROPOSED ACTION
T1	Not present	Ash	
T2	948	Sycamore	Replace with lime
T3	947	Lime	Remove suckling
T4	Not present	Thorn	
T5	Not present	Maple	
T6	Not present	Holly	
T7	943	Sweet Chestnut	Thin out canopy
T11	963	Ash	Replace with Ash
T12	Not present	Box elder	



TREE REFERENCE NO. (Refer to Artech Consulting Tree Survey)



OUTLINE SPECIFICATION

Plant Beds: 400mm depth topsoil
 Grass Areas: 150mm depth topsoil
 Additional 400mm depth of subsoil over areas of construction fill
 Remove objects greater than 75mm in size from the topsoil and cart away.
 Provide an analysis of imported/stockpiled topsoil with recommendations for making good any deficiencies. Provide details of the source and a 1kg sample of imported topsoil for approval by the Landscape Architect.

TREES

Tree Inspection
 Trees to be selected by the Landscape Architect at the grower's nursery.

Triple staking: 3No. 75mm diam. x 1800mm long stakes set equidistant around the tree rootball. Top of stake 800mm above ground level. Tree tied to each stake with 25mm wide neoprene straps and 300mm long plastic sleeves.
 Oblique staking:
 Single 75mm diam. x 1800mm long stake set at 45 degrees in North East direction and fixed to stem with single spacer and 39mm wide neoprene strap

Single Staking
 Single 75mm diam. x 1800mm long stake fixed twice with neoprene straps and rubber spacers
 Underground Guying
 Install 2 sets of timber collars, one above and one below the rootball.
 Timber collar: 4No. 100 x 25mm x 750mm long untreated softwood boards bolted together.
 Prior to backfilling with topsoil, step the collars together and tighten with 3No. collars with neoprene straps tensioned to wire. Anchor the lower collar into firm ground with 4No. 500mm long metal pins, ensuring the tree is set vertical.

Root Preparation
 Trees to be rootballed for planting between November and March inclusive. All trees to be container grown or containerised for planting between April to October inclusive.

SHRUB PLANTING
 Backfill 300 x 300mm deep plant pit with 1 part compost and 5 parts topsoil thoroughly mixed before backfilling.

MULCH
 50mm thick, 35-75mm size bark mulch cover to all exposed topsoil within 50mm of the trunk. 45% minimum bark content permitted. Provide a sample to the Landscape Architect prior to delivery.

GRASS AREAS
 A general pre-seeding fertiliser shall be applied to the soil between 3 and 5 days before laying turf or sowing seed and incorporated into the top 25mm of fill at a rate of 70gms/sq.m

Seed Grass: Grade 'A2' 'Lawn Seed', as supplied by British Seed Houses or similar, sown at a rate of 35 grams per sq.m
 Turf Grass: Lay ornamental quality turf grass. Turves shall be in accordance with BS3989. Recommendations for turf for general landscape purposes - Wiltflower & Grass Mix: 'E143' Special Meadow Grass Mix (sown at a rate of 5 grams per sq.m), as supplied by Emorsgate Seeds (01553-829026/ www.wiltseeds.co.uk)

BULB PLANTING
 Plant bulbs in September following completion of the planting scheme.

MAINTENANCE
 Defects Period for 52 weeks following Practical Completion.
 Allow for 26 maintenance visits for checking irrigation system, watering, cutting, weeding, pruning and collection of leaf litter.
PROTECTION OF EXISTING TREES
 Refer to Artech Consulting report

CLIENT	HUSH PROPERTIES
ADDRESS	HEATH PARK
TITLE	PLANTING STRATEGY & TREE PLANTING PLAN
JOB/DRAWING NO	REVISION
7181.19.05	
SCALE	DATE
1:250 @ A1	JULY 2008