

CONSTRUCTION KEY	
	existing retained
	line over/under/behind
	demolished
	new construction

Selectaglaze secondary glazing system
- as detail SG-04 drawings
8214-FAC-D01 & D02

new 63mm diameter black cast iron rainwater pipe

new double-hung sliding sash window (painted timber and double glazed) - reveals adapted, with new lintel over, for sash weights
2 N° 150 x 100 P.C. BEAMS OVER, 200 LONG BEARINGS.

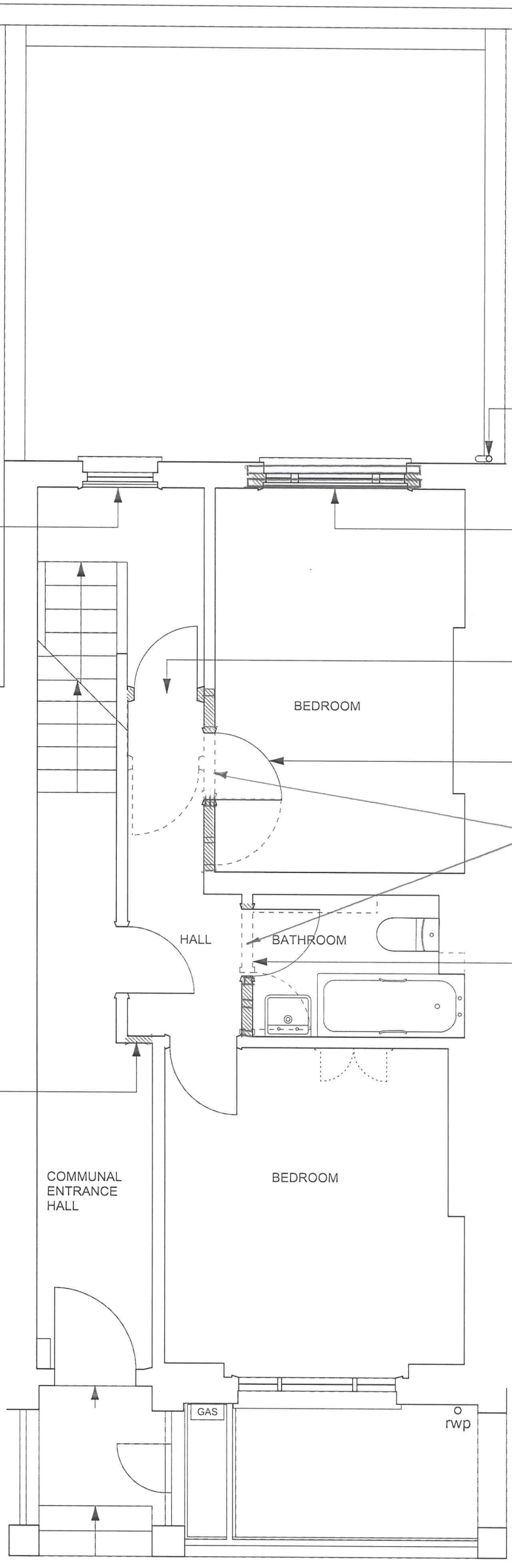
existing (non-original) partition and door shown dotted where removed; new partition with skirtings to match existing adjacent

existing (non-original) partition and door shown dotted where removed; door opening relocated to provide space for wardrobes

2 N° 50 x 100 JOISTS OVER.

existing (non-original) partition and door shown dotted where removed; new partition with skirtings to match existing adjacent

existing (non-original) glazed screen removed; new partition with skirtings to match existing adjacent



NOTE:
All ceiling plasterboard to be replaced throughout the ground floor (1 hour fire resisting) on resilient bars
All internal doors renewed as solid timber flush fire doors

FOR NOTES SEE DWG N° SK00



PROJECT 5
ARCHITECTURE LLP
8 Waterson Street
London E2 8HL
T: +44 (0)20 7739 9131
F: +44 (0)20 7739 3687
E: info@p5a.co.uk

job title
15 AMPTON STREET, LONDON WC1X 0LT
drawing
GROUND FLOOR PLAN - PROPOSED

Ellis and Moore Ltd
CONSULTING ENGINEERS

Drawing No
14071/Sk02