



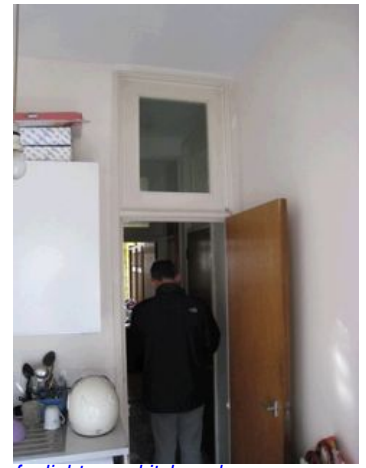
communal staircase half landing



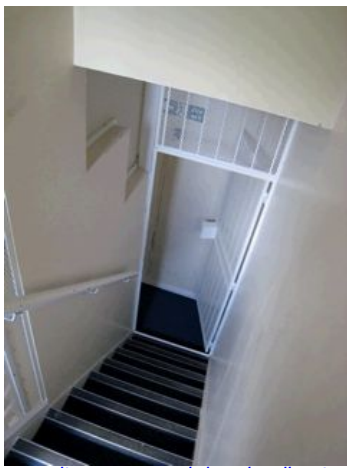
balcony and doors from kitchen



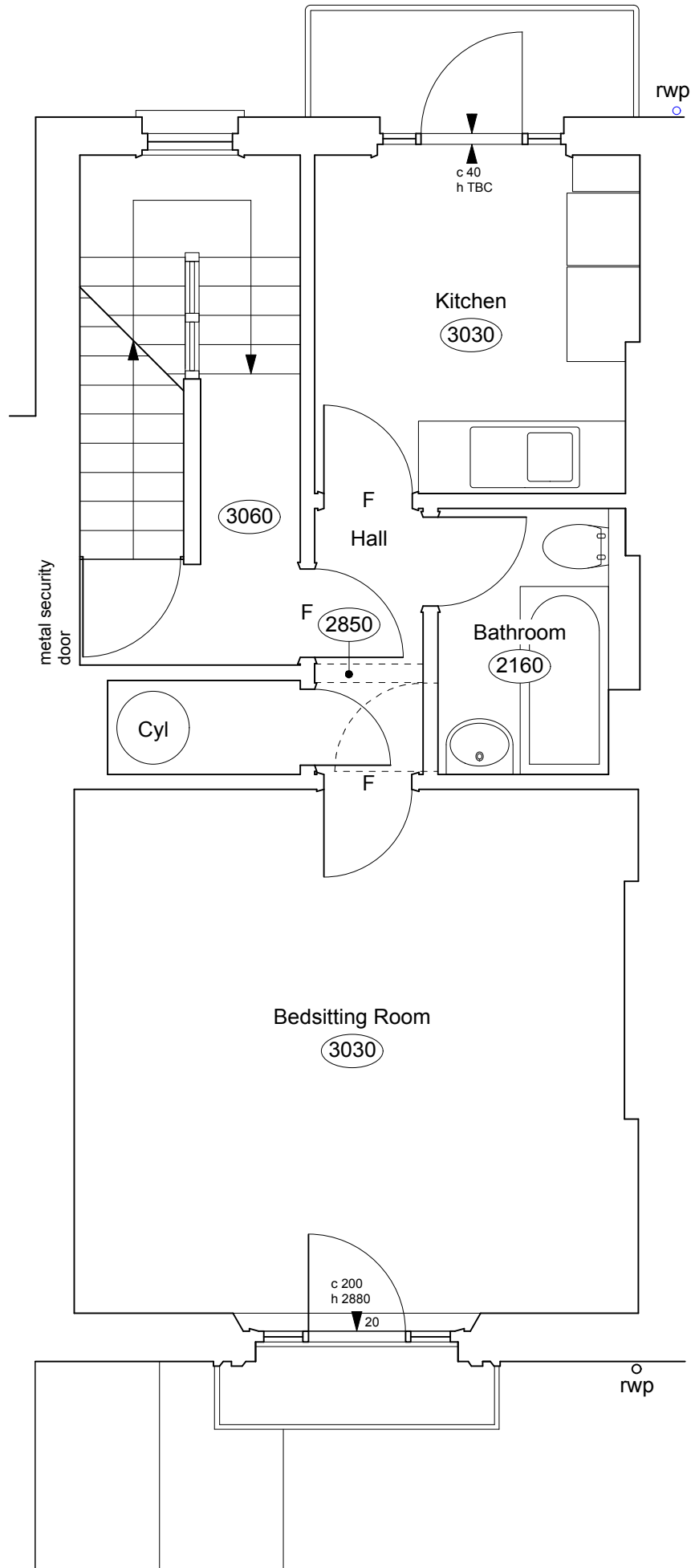
security screen and door leading to upper maisonette



fanlight over kitchen door



security screen and door leading to upper maisonette



entrance hall - high level view



bedsit room - tenant's timber screen dividing sleeping area from living area

NOTE - 15 AMPTON STREET

THERE ARE NO ORIGINAL FEATURES OF ANY KIND WHATSOEVER REMAINING IN THE PROPERTY. IT IS ASSUMED THAT THE TERRACE (15, 17 & 19) HAS BEEN ENTIRELY REBUILT, APART FROM THE FRONT ELEVATION AND PARTY WALLS.

