

10.0m

2.5m

scale 1:50

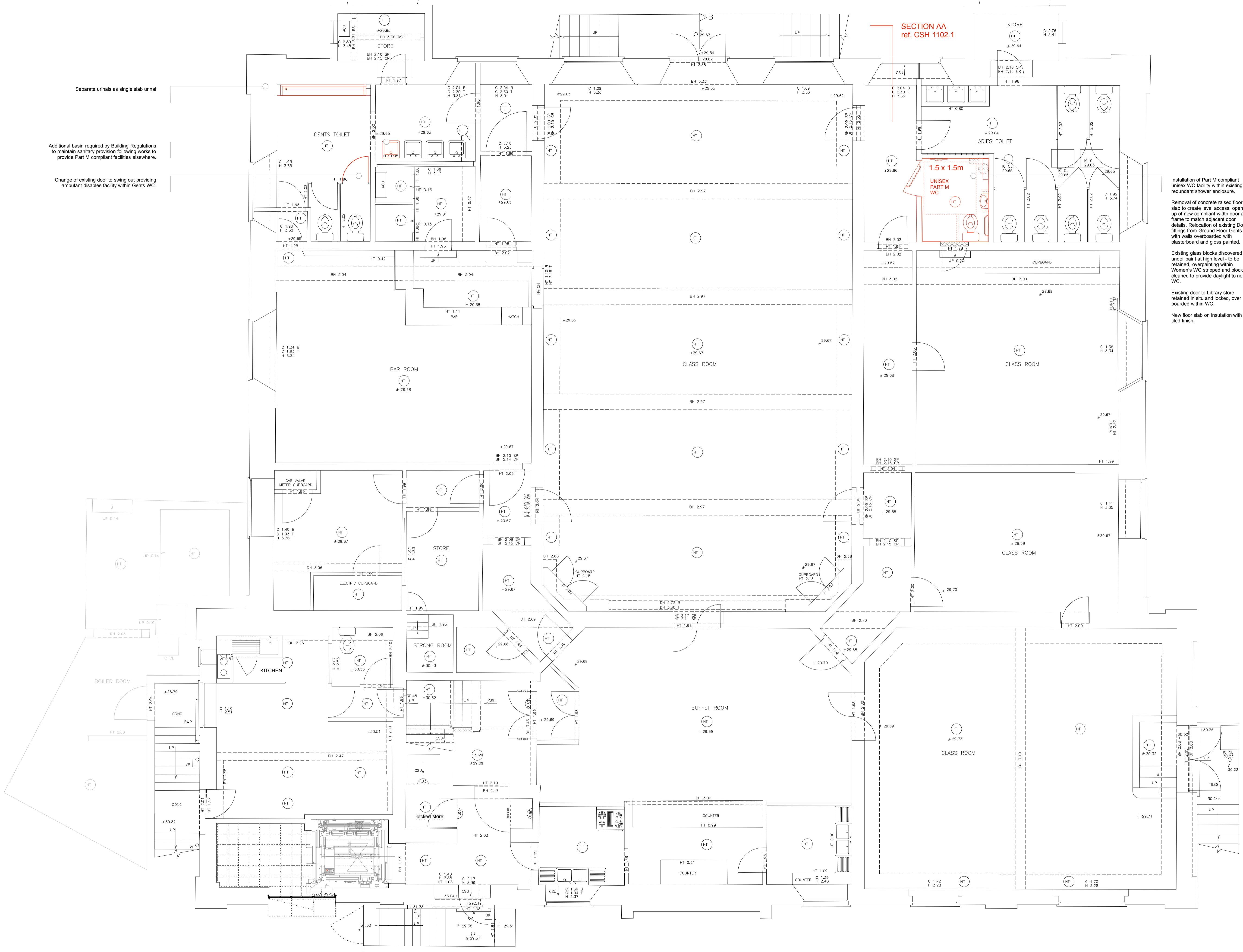
Arts Lettres Techniques Limited 2013 copyright is retained ©

Separate urinals as single slab urinal

Additional basin required by Building Regulations to maintain sanitary provision following works to provide Part M compliant facilities elsewhere.

Change of existing door to swing out providing ambulant disables facility within Gents WC.

SECTION AA
ref. CSH 1102.1



Installation of Part M compliant unisex WC facility within existing redundant shower enclosure.

Removal of concrete raised floor slab to create level access, opening up of new compliant width door and frame to match adjacent door details. Relocation of existing Doc M fittings from Ground Floor Gents WC with walls overboarded with plasterboard and gloss painted.

Existing glass blocks discovered under paint at high level - to be retained, overpainting within Women's WC stripped and blocks cleaned to provide daylight to new WC.

Existing door to Library store retained in situ and locked, overboarded within WC.

New floor slab on insulation with tied finish.

REVISIONS

copyright is retained ©

31A ARLINGTON ROAD LONDON NW11 7EJ T: (020) 7383 4778

all dimensions unless stated otherwise

alan.chandler@artslt.co.uk

PROJECT

CECIL SHARP HOUSE

NUMBER

CSH 1102

REVISION

DATE

25/03/13

SUBJECT

BASEMENT FLOOR PLAN proposed

ARCHITECT

Arts Lettres Techniques Limited 2013

LONDON NW11 7EJ T: (020) 7383 4778

alan.chandler@artslt.co.uk

PROJECT

CECIL SHARP HOUSE

NUMBER

CSH 1102

REVISION

DATE

25/03/13

SUBJECT

BASEMENT FLOOR PLAN proposed