

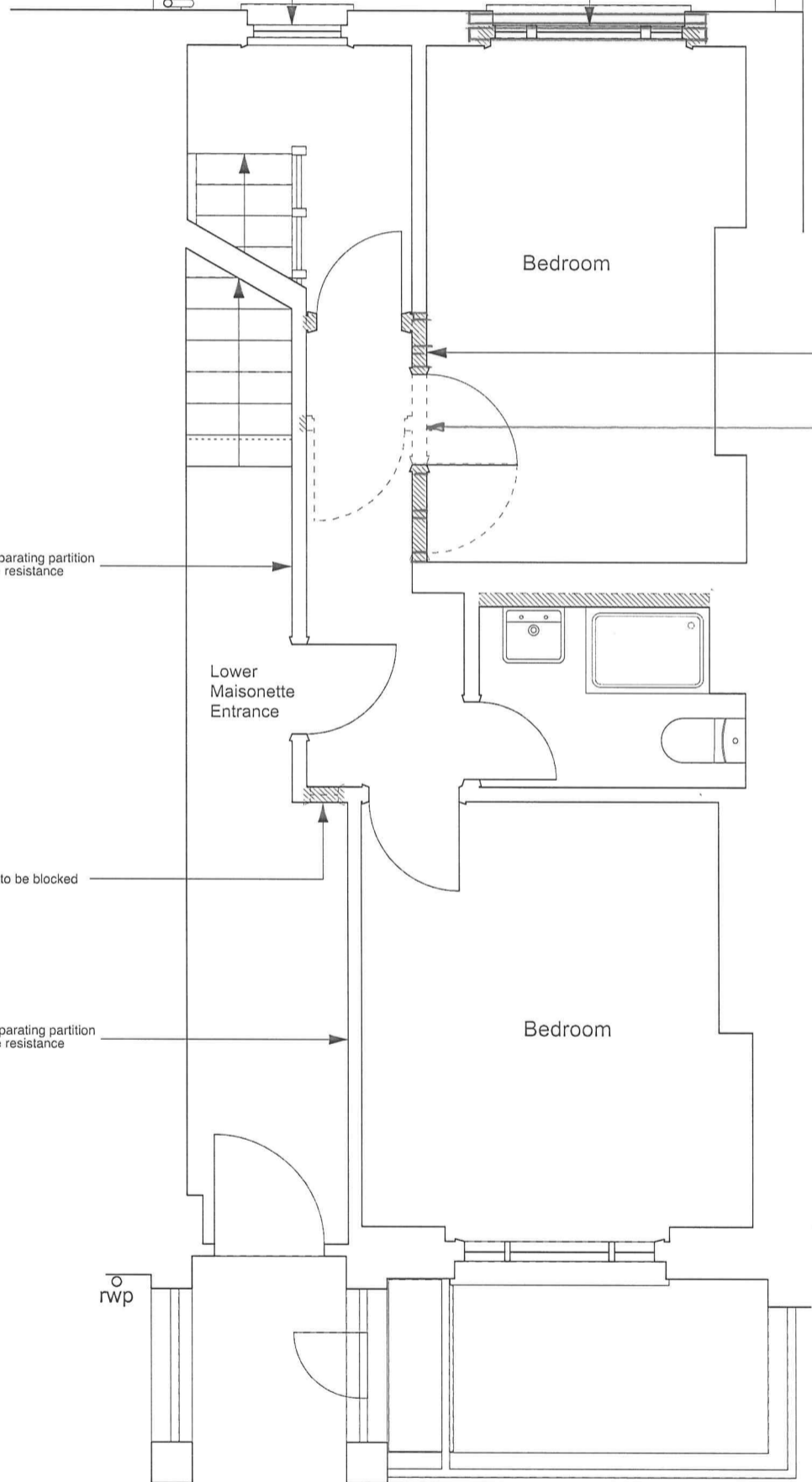
CONSTRUCTION KEY	
	existing retained
	line over/under/behind
	demolished
	new construction

new casement window in existing opening
(painted timber and double glazed)

rwp

new double-hung sliding sash window (painted
timber and double glazed) - reveals adapted,
with new lintel over, for sash weights

**ZN° 150 x 100 P.C. BEAMS
OVER. 200 LONG BEARINGS**



non-original partitions and door openings
altered as shown (to improve wardrobe space)

2 N° 50 x 100 JOISTS OVER

non-original plasterboard separating partition
to be upgraded to 1 hour fire resistance

Lower
Maisonette
Entrance

non-original glazed opening to be blocked

non-original plasterboard separating partition
to be upgraded to 1 hour fire resistance

Bedroom

rwp

NOTE:
All ceiling plasterboard to be replaced
throughout the ground floor (1 hour fire
resisting) on resilient bars
All internal doors renewed as solid timber
flush fire doors

FOR NOTES SEE DWG N° SK00



	PROJECT 5 ARCHITECTURE LLP 8 Waterson Street London E2 8HL T: +44 (0)20 7739 9131 F: +44 (0)20 7739 3687 E: info@p5a.co.uk	job title 19 AMPTON STREET, LONDON WC1X 0LT drawing GROUND FLOOR PLAN - PROPOSED
--	--	---

Ellis and Moore Ltd CONSULTING ENGINEERS	Drawing No 14072/Sk02
--	---------------------------------