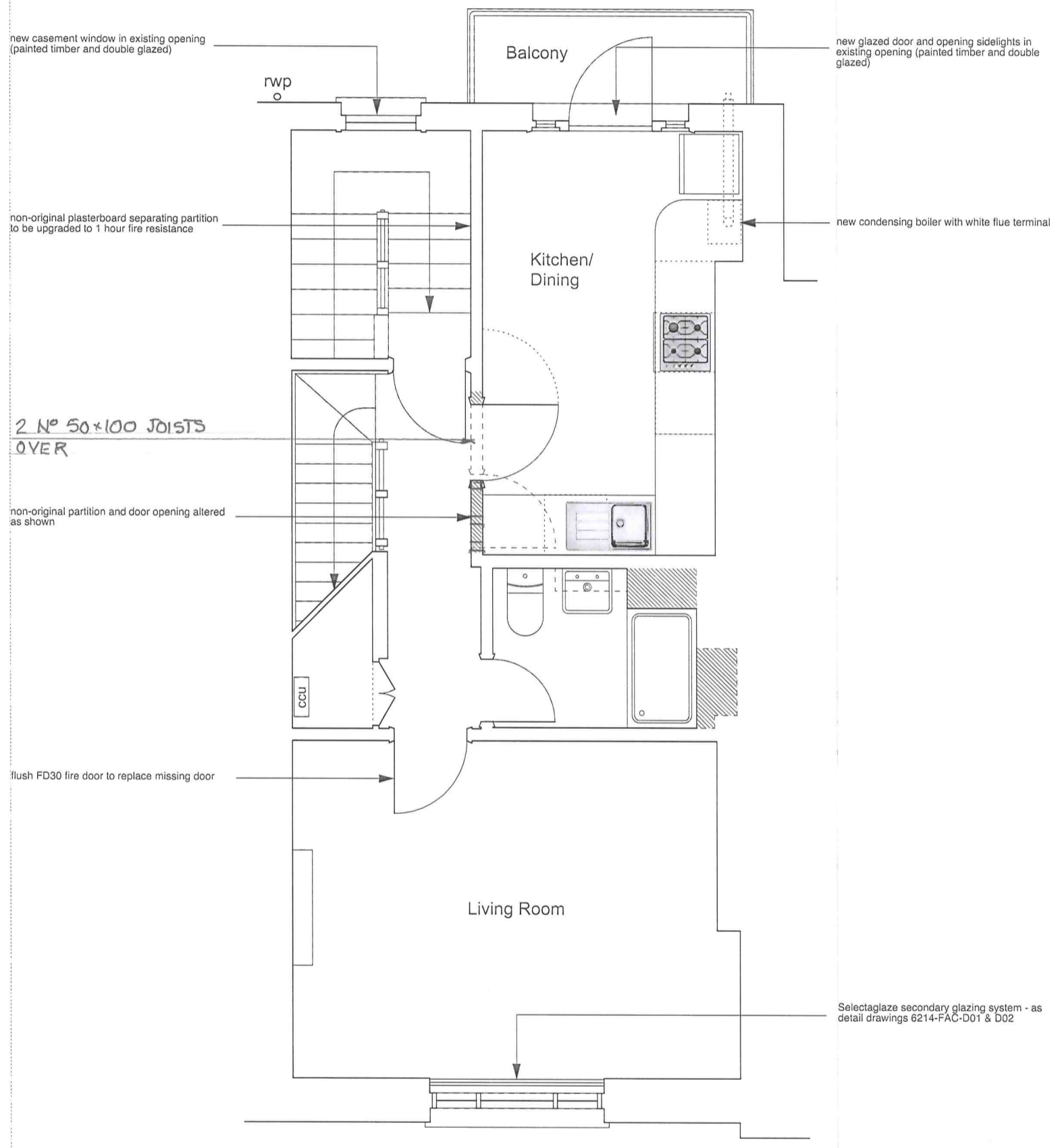


CONSTRUCTION KEY	
	existing retained
	line over/under/behind
	demolished
	new construction



NOTE:
 All ceiling plasterboard to be replaced throughout the second floor (1 hour fire resisting) on resilient bars
 All internal doors renewed as solid timber flush fire doors

FOR NOTES SEE DWG NO SK 00



	PROJECT 5 ARCHITECTURE LLP 8 Waterson Street London E2 8HL T: +44 (0)20 7739 9131 F: +44 (0)20 7739 3687 E: info@p5a.co.uk	job title 19 AMPTON STREET, LONDON WC1X 0LT drawing 2ND FLOOR PLAN - PROPOSED
--	--	--

Ellis and Moore Ltd CONSULTING ENGINEERS	Drawing No 14072/Sk04
--	---------------------------------