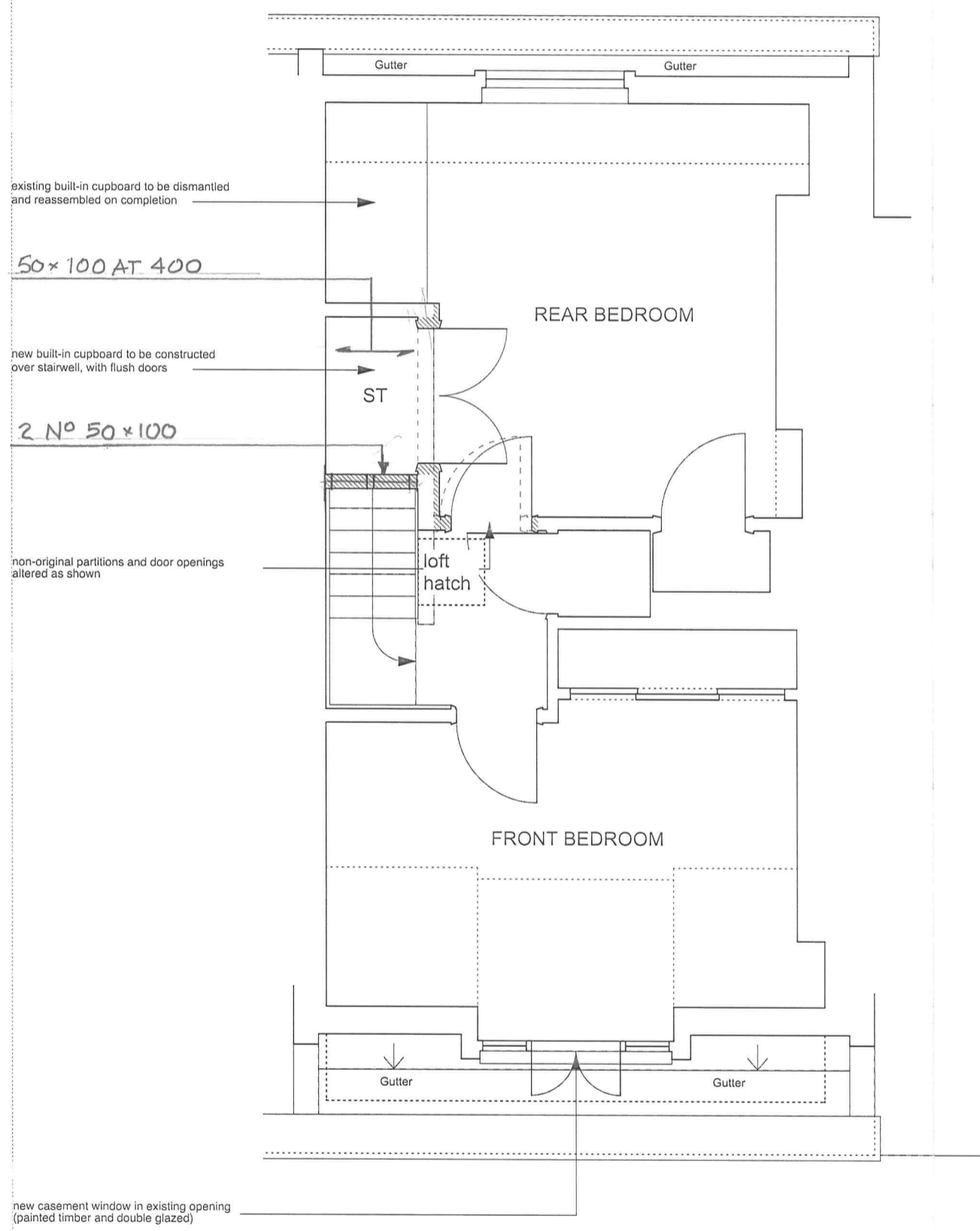


CONSTRUCTION KEY	
	existing retained
	line over/under/behind
	demolished
	new construction



NOTE:  
 All ceiling plasterboard to be replaced throughout the third floor (1/2 hour fire resisting)  
 All internal doors renewed as solid timber flush fire doors

FOR NOTES SEE DWG N° SK00



	PROJECT 5 ARCHITECTURE LLP 8 Waterson Street London E2 8HL T: +44 (0)20 7739 9131 F: +44 (0)20 7739 3687 E: info@p5a.co.uk	job title <b>19 AMPTON STREET, LONDON WC1X 0LT</b>
		drawing <b>ATTIC (3RD FLOOR) PLAN - PROPOSED</b>

<b>Ellis and Moore Ltd</b> CONSULTING ENGINEERS	Drawing No <b>14072/Sk05</b>
--	---------------------------------