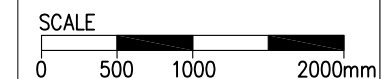
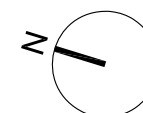
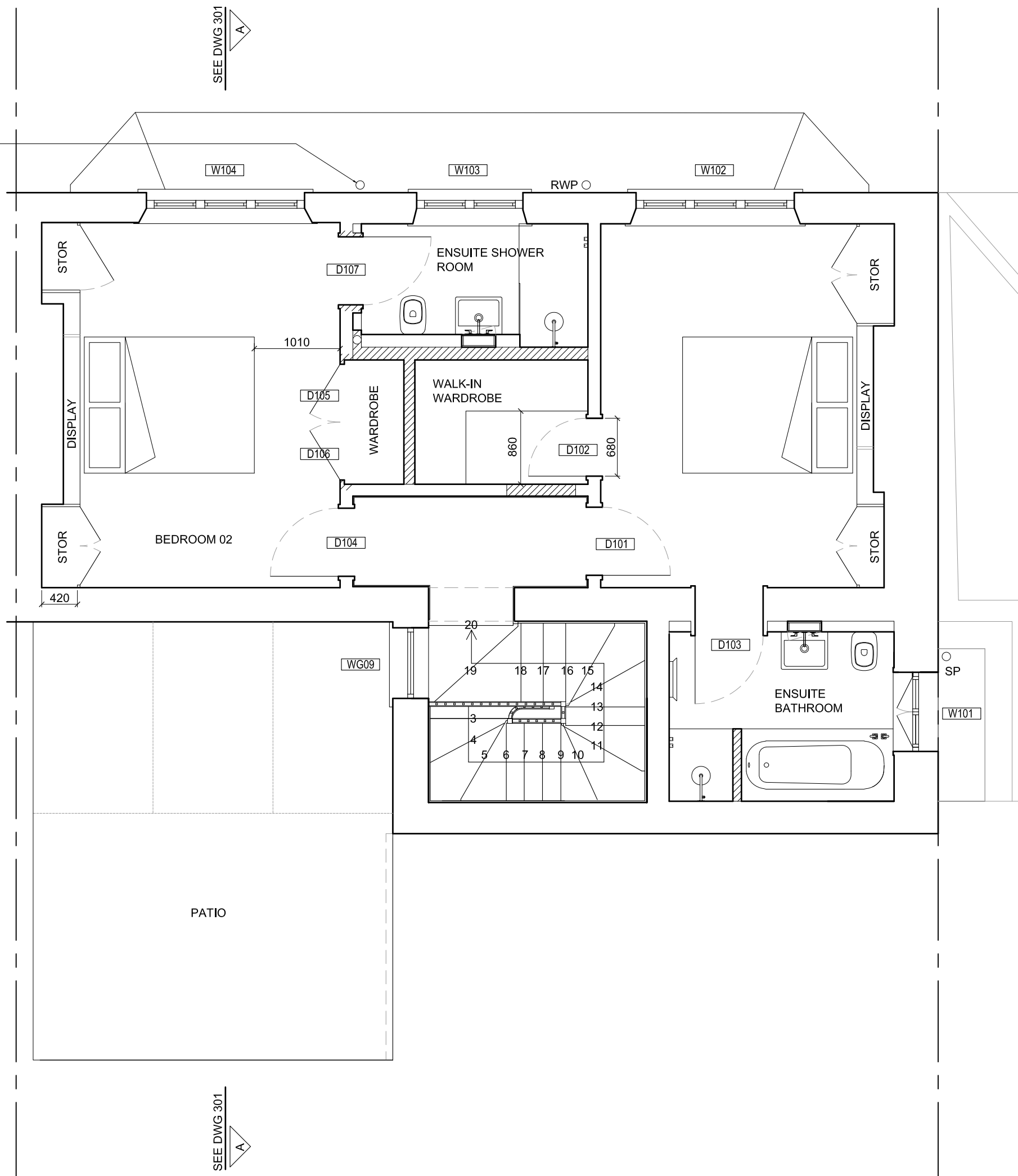


PLANNING

REVISIONS

NOTES

NEW CAST IRON SOIL PIPE, PAINTED TO MATCH COLOUR OF OTHER DOWNPIPES, IN ACCORDANCE WITH CROWN ESTATE REQUIREMENTS



7 PARK VILLAGE
WEST, NW1
PROPOSED FIRST FLOOR
PLAN

DWG No: 7PVW/P103

SCALE: 1 - 50 @A3

DATE: FEBRUARY 2013

belsize
architects

48 PARKHILL ROAD, LONDON NW3 2YP
TEL 020 7482 4420 - FAX 020 7482 4186
MAIL@BELSIZEARCHITECTS.COM

© COPYRIGHT
NOT TO BE REPRODUCED OR USED
WITHOUT PERMISSION

SEE DWG 301
A

SEE DWG 301
A