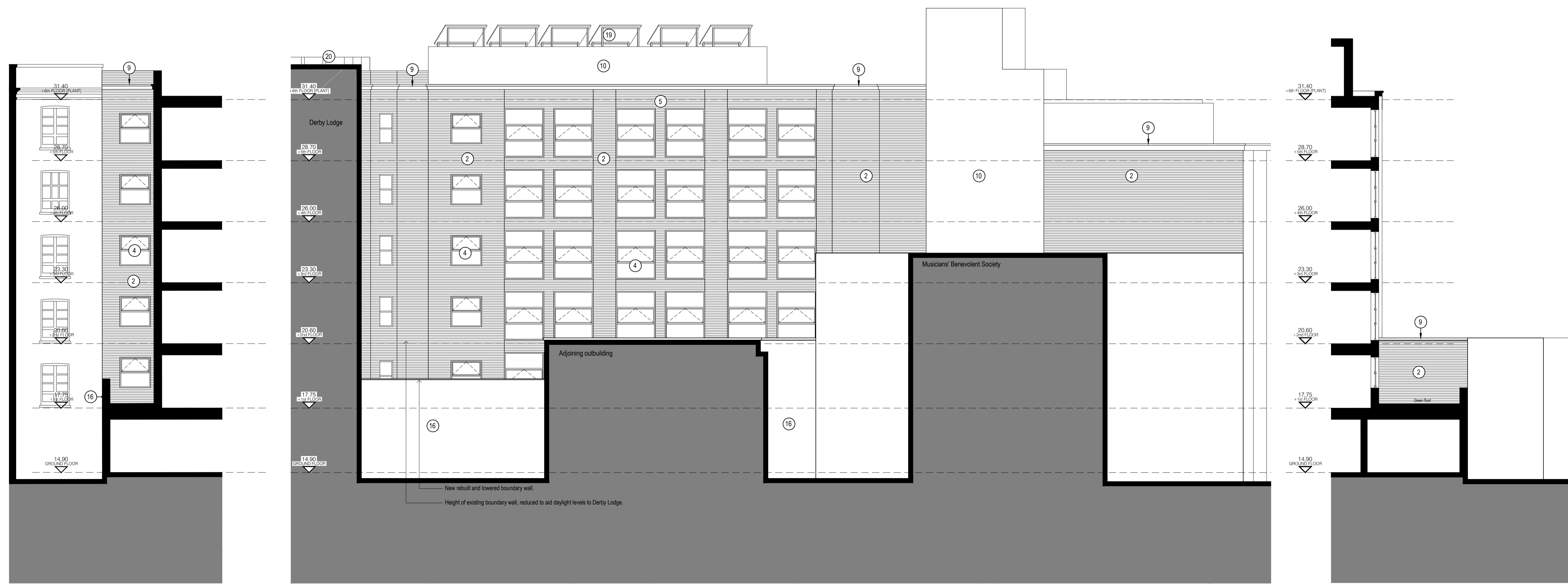


WICKLOW STREET ELEVATION [SOUTH EAST]

NOTES:  
 Do not scale from this drawing.  
 Dimensions to be site checked by Contractor working only from grid and figured dimensions and cross checked with all other relevant drawings.  
 Any discrepancies to be reported to the Architect prior to construction.  
 The title, copyright and information in this document is the property of Morrison Design Ltd, Chartered Architects.



- Materials Key
- 1 Double glazed polyester powder coated aluminium sliding main entrance doors and side screens. Colour - Grey all to approved sample.
  - 2 Stock brickwork, all to approved sample
  - 3 Double glazed polyester powder coated aluminium window. Colour - Grey all to approved sample
  - 4 Reversible polyester powder coated aluminium casement windows (inward opening with restrictors) with fixed top and bottom lights. Colour - Grey, all to approved sample
  - 5 Recessed stock brickwork, all to approved sample
  - 6 Insulated rendered panels, colour TBC, all to approved sample.
  - 7 Slate pitched roofs to approved sample.
  - 8 Double glazed polyester powder coated curtain walling system all to approved sample.
  - 9 Reon stone parapet capping detail all to approved sample.
  - 10 Pressed metal 'zinc' fascia & cladding system, colour dark grey (slate) all to approved sample.
  - 11 Painted galvanised steel balcony balustrade.
  - 12 Galvanised steel delivery refuse gate.
  - 13 Proprietary PPC coated metal louvre system to roof level plant rooms, incorporating acoustic treatment as required in accordance with Acoustic Consultants recommendations.
  - 14 Residential entrance doors.
  - 15 Reversible polyester powder coated aluminium casement windows (inward opening with restrictors) set within roof dormer. Colour - Grey, all to approved sample.
  - 16 Existing Derby Lodge boundary wall, demolished and rebuilt to match.
  - 17 Code 3 lead cladding to dormer windows.
  - 18 Existing Galvanised steel metal posts and mesh, palisade fence and boundary walling to Circle line cutting retained. New 'Green' walling to residence side to specialist details to conceal existing fencing.
  - 19 Roof mounted PV panels
  - 20 Roof mounted condenser units.
  - 21 Polyester Powder Coated door



LIGHT WELL ELEVATION [NORTH WEST]

COURTYARD ELEVATION [NORTH EAST] VIEW FROM DERBY LODGE GARDENS

LIGHT WELL ELEVATION [SOUTH EAST]

REV: A BY: P.J.N. CFI: JI DATE: 19/03/13  
 Additional elevation added, North West added, annotation error to North East elevation corrected.



St Alkmunds House, 103 Belper Road, Derby DE1 3ES  
 T: 01332 363355 F: 01332 291441 E: architect@morrisondesign.co.uk

Job Title  
 Mixed Use Development  
 13 Britannia Street  
 Kings Cross, London  
 Raag St Pancras Ltd

Drawing Title  
 Elevations as Proposed [Sheet 2 of 3]

File Ref.: F:\Public\3800 Series\3859\Drawings\  
 Plotter Settings: monochrome\_lite.ctb

Scale: 1:100@A1	Drawn: P.J.N.	CFI: JI	Date: Jan '13
Job No. 3859	Drawing No. [P]_241	Revision A	

PLANNING SUBMISSION