



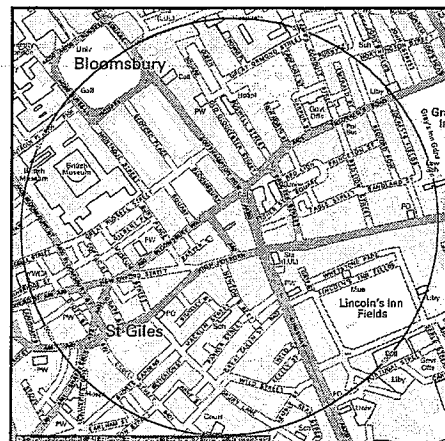
**Site**  
5 Southampton Place, LONDON, WC1A 2DW

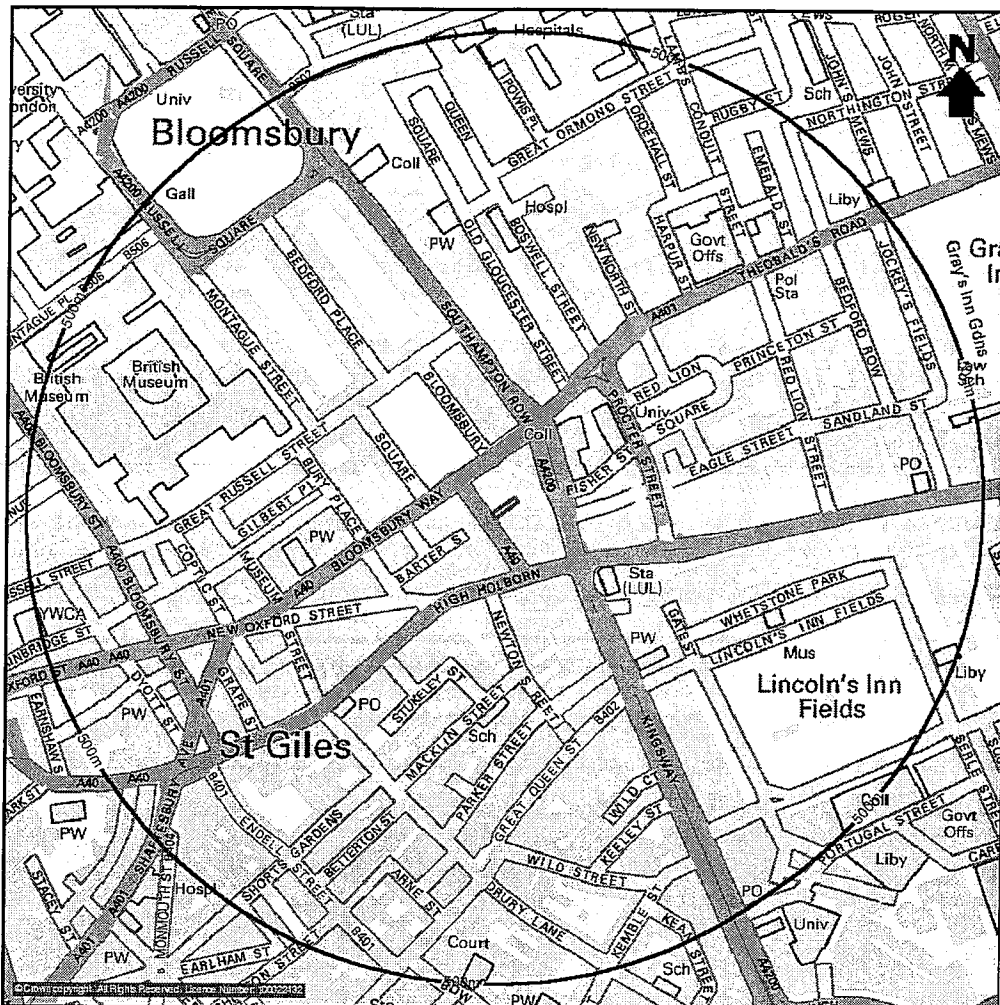
**Grid Reference**  
530430, 181590

**Report Reference**  
SAS\_43788424\_1\_1

**Customer Reference**  
SF18588264000

**Size of Site**  
208 m<sup>2</sup>





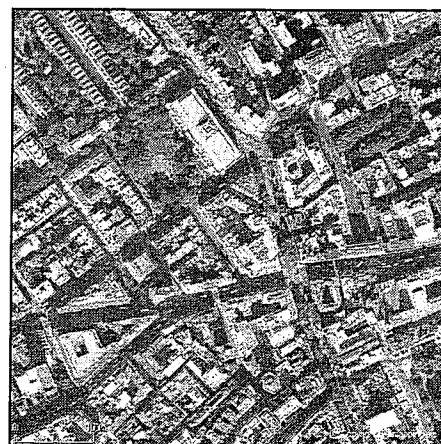
**Site**  
5 Southamption Place, LONDON, WC1A 2DW

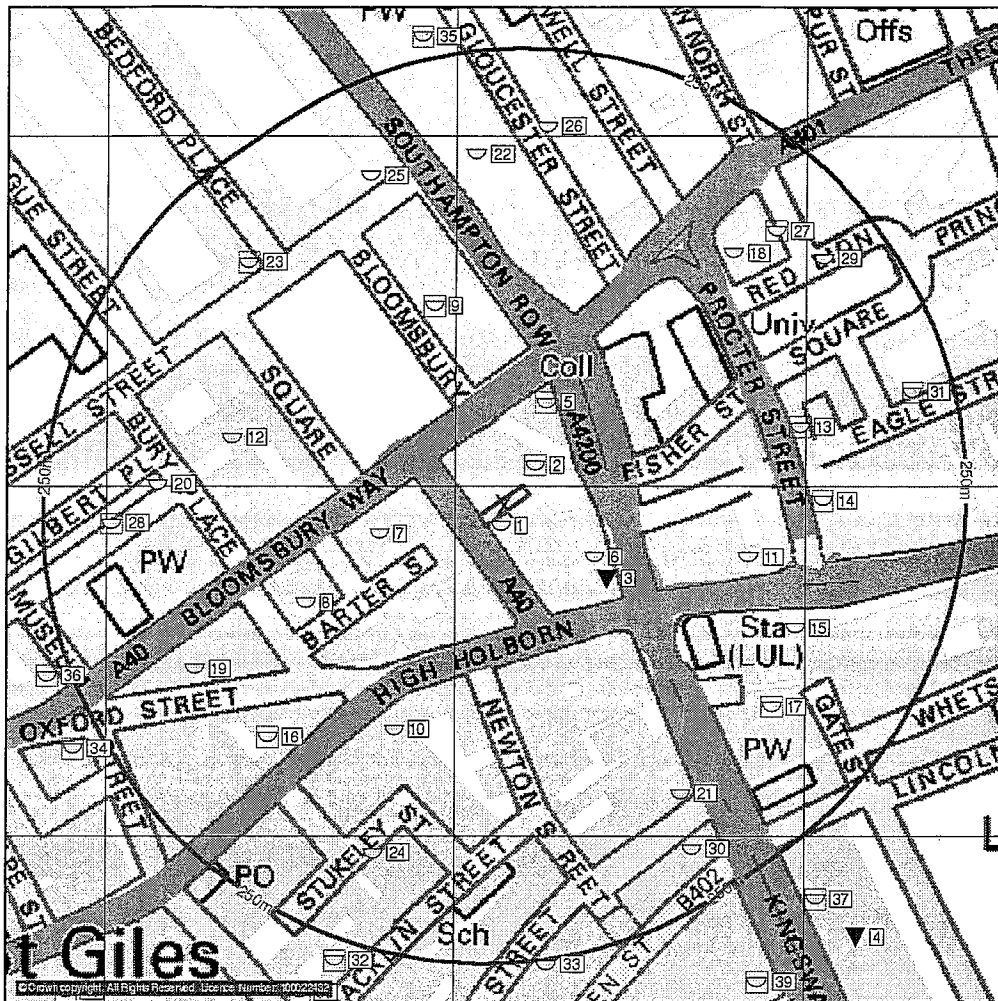
**Grid Reference**  
530430, 181590

**Report Reference**  
SAS\_43788424\_1\_1

**Customer Reference**  
SF18588264000

**Size of Site**  
208 m<sup>2</sup>





General	Waste/Landfill Sites	Contraventions	Storage Of Hazardous Substances	Statutory Authorisations	
<ul style="list-style-type: none"> <li>Site Boundary</li> <li>Search Buffer</li> <li>Bearing Reference Point</li> <li>Reference Number</li> </ul>	<ul style="list-style-type: none"> <li>BGS Recorded Landfill Site</li> <li>Licensed Waste Management Facilities (Landfill)</li> <li>Local Authority Recorded Landfill Site</li> <li>Registered Waste Transfer Site</li> <li>Registered Waste Treatment or Disposal Site</li> <li>Registered Landfill Site</li> <li>Point Location of Registered Landfill Site</li> </ul>	<ul style="list-style-type: none"> <li>BGS Recorded Landfill Site (Point)</li> <li>Licensed Waste Management Facilities (Location)</li> <li>Local Authority Recorded Landfill Site (Point)</li> <li>Registered Waste Transfer Site (Point)</li> <li>Registered Waste Treatment or Disposal Site (Point)</li> <li>Registered Landfill Site Potential Landfill Buffer</li> </ul>	<ul style="list-style-type: none"> <li>Local Authority Pollution Prevention and Control Enforcement</li> <li>Planning Hazardous Substance Enforcement</li> <li>Prosecution Relating to Authorised Processes</li> <li>Enforcement and Prohibition Notice</li> <li>Substantiated Pollution Incident Register</li> <li>Prosecution Relating to Controlled Waters</li> </ul>	<ul style="list-style-type: none"> <li>COMAH</li> <li>Planning Hazardous Substance Consent</li> <li>Explosive Site</li> <li>NHHS</li> <li>Integrated Pollution Control</li> <li>Integrated Pollution Prevention Control</li> <li>Integrated Pollution Control Registered Waste Site</li> <li>Local Authority Integrated Pollution Prevention and Control</li> </ul>	<ul style="list-style-type: none"> <li>Local Authority Pollution Prevention and Control</li> <li>Contaminated Land Register Entry or Notice (Point)</li> <li>Contaminated Land Register Entry or Notice</li> <li>Registered Radioactive Substance</li> <li>Discharge Consents</li> <li>Discharge Consent</li> <li>Water Industry Act Referral</li> </ul>
<ul style="list-style-type: none"> <li>Miscellaneous</li> <li>BGS Recorded Mineral Site</li> </ul>	<ul style="list-style-type: none"> <li>Potentially Contaminative Use</li> <li>Potentially Contaminative Use (High Risk)</li> </ul>	<ul style="list-style-type: none"> <li>Industrial Processes</li> <li>Integrated Pollution Control</li> <li>Integrated Pollution Prevention Control</li> <li>Integrated Pollution Control Registered Waste Site</li> <li>Local Authority Integrated Pollution Prevention and Control</li> </ul>	<ul style="list-style-type: none"> <li>Statutory Authorisations</li> </ul>		