

Notes

These plans and specifications prepared by Robert Dye Associates as instruments of professional service shall remain the property of Robert Dye Associates

These plans may not be copied or re-used without the express written consent of Robert Dye Associates. The use of these plans for construction is permitted only when specifically released for construction reference by a dated authorised signature.

These plans are project and site specific and shall only be used for their intended purpose unless otherwise permitted by written consent of Robert Dye Associates.

All dimensions shown are indicative and must be double checked on site by the contractor. Any inconsistencies found must be reported to Robert Dye Associates.

DO NOT SCALE FROM THE DRAWING

Planning Notes:

For consented dormer -  
See Planning Ref: 2012/3401/P

For consented skylights -  
See Planning Ref: 2012/5619/P

Rev	Date	Notes
A	220313	Notes updated

**robertdye**

Robert Dye Associates  
Unit A2 Linton House 39-51 Highgate Road London NW5 1RS

tel: 020 7267 9388  
fax: 020 7267 9345

www.robertdye.com  
email: info@robertdye.com

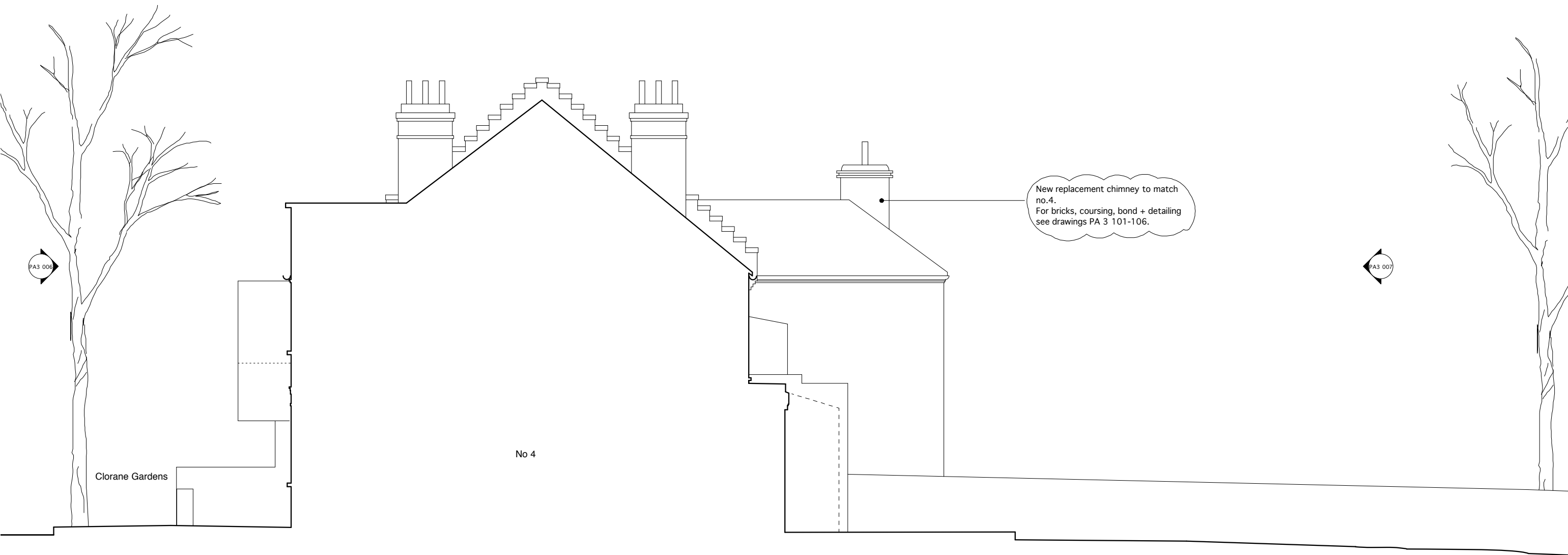
project	2 Clorane Gardens	project no	218
drawing	Proposed Roof Plan	scale	1:100 @ A3
		drawn by	K1
drawing no	PA3 005	rev	A
		date	Feb 2013
		dwg status	PD



<div>Notes</div> <div>These plans and specifications prepared by Robert Dye Associates as instruments of professional service shall remain the property of Robert Dye Associates</div> <div>These plans may not be copied or re-used without the express written consent of Robert Dye Associates. The use of these plans for construction is permitted only when specifically released for construction reference by a dated authorised signature.</div> <div>These plans are project and site specific and shall only be used for their intended purpose unless otherwise permitted by written consent of Robert Dye Associates.</div> <div>All dimensions shown are indicative and must be double checked on site by the contractor. Any inconsistencies found must be reported to Robert Dye Associates.</div> <div>DO NOT SCALE FROM THE DRAWING</div>	<div>0125</div>			<div>Planning Notes:</div> <div>For consented single storey extension &amp; blocked window - See Planning Ref: 2012/3401/P</div> <div>For consented windows &amp; skylights - See Planning Ref: 2012/5619/P</div> <div>For consented incidental plant room - See Planning Ref: 2012/3821/P</div>	<div>Rev</div>	<div>Date</div>	<div>Notes</div>	<div>robertdye</div> <div>Robert Dye Associates Unit A2 Linton House 39-51 Highgate Road London NW5 1RS</div> <div>tel: 020 7267 9388 fax: 020 7267 9345</div>	
					A	220313	Notes updated	<div>project</div> <div>2 Clorane Gardens</div>	
								<div>project no</div> <div>218</div>	
								<div>drawing</div> <div>Proposed Rear Elevation</div>	
								<div>scale</div> <div>1:100 @ A3</div>	
								<div>drawn by</div> <div>K1</div>	
								<div>drawing no</div> <div>PA3 007</div>	
								<div>rev</div> <div>A</div>	
								<div>date</div> <div>Feb 2013</div>	
								<div>dwg status</div> <div>PD</div>	



<div>Notes</div> <div>These plans and specifications prepared by Robert Dye Associates as instruments of professional service shall remain the property of Robert Dye Associates</div> <div>These plans may not be copied or re-used without the express written consent of Robert Dye Associates. The use of these plans for construction is permitted only when specifically released for construction reference by a dated authorised signature.</div> <div>These plans are project and site specific and shall only be used for their intended purpose unless otherwise permitted by written consent of Robert Dye Associates.</div> <div>All dimensions shown are indicative and must be double checked on site by the contractor. Any inconsistencies found must be reported to Robert Dye Associates.</div> <div>DO NOT SCALE FROM THE DRAWING</div>	<div>0125</div>	Planning Notes:			Rev	Date	Notes	<div>robertdye</div> <div>Robert Dye Associates Unit A2 Linton House 39-51 Highgate Road London NW5 1RS</div> <div>tel: 020 7267 9388 fax: 020 7267 9345</div> <div>www.robertdye.com email: info@robertdye.com</div>		
					A	220313	Notes updated			
								project	2 Clorane Gardens	project no 218
								drawing	Proposed Side Elevation	scale 1:100 @ A3 drawn by K1
								drawing no	PA3 008	rev A
										date Feb 2013
										dwg status PD



Notes

These plans and specifications prepared by Robert Dye Associates as instruments of professional service shall remain the property of Robert Dye Associates

These plans may not be copied or re-used without the express written consent of Robert Dye Associates. The use of these plans for construction is permitted only when specifically released for construction reference by a dated authorised signature.

These plans are project and site specific and shall only be used for their intended purpose unless otherwise permitted by written consent of Robert Dye Associates.

All dimensions shown are indicative and must be double checked on site by the contractor. Any inconsistencies found must be reported to Robert Dye Associates.

DO NOT SCALE FROM THE DRAWING



Planning Notes:

For consented single storey extension & roof dormer -  
See Planning Ref: 2012/3401/P

For consented windows & skylights -  
See Planning Ref: 2012/5619/P

For consented incidental plant room -  
See Planning Ref: 2012/3821/P

For consented basement extension -  
See Planning Ref: 2011/6239/P

Rev	Date	Notes
A	220313	Notes updated

<b>robertdye</b> Robert Dye Associates Unit A2 Linton House 39-51 Highgate Road London NW5 1RS tel: 020 7267 9388 fax: 020 7267 9345 www.robertdye.com email: info@robertdye.com		
project	2 Clorane Gardens	
project no	218	
drawing	Proposed West Elevation	
scale	1:100 @ A3	
drawn by	K1	
drawing no	PA3 012	rev
date	Feb 2013	dwg status
	A	PD