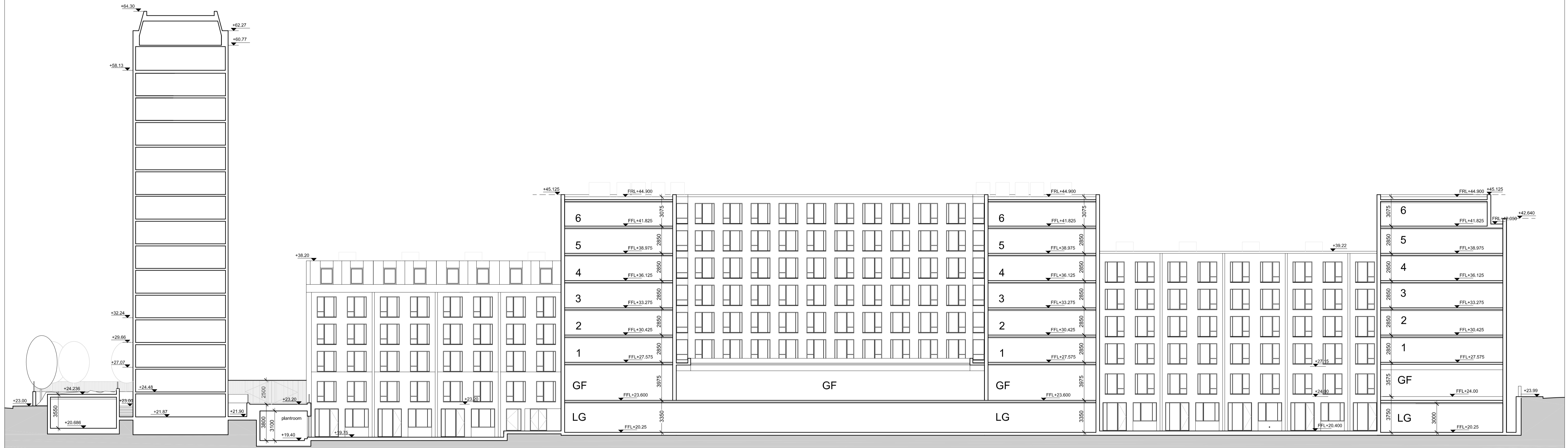
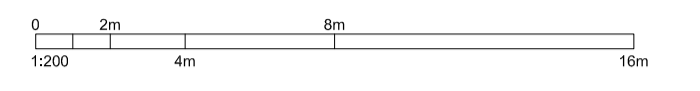


KEY PLAN

NOTES:
 DO NOT SCALE. FIGURED DIMENSIONS ONLY TO BE TAKEN FROM THIS DRAWING. CHECK DIMENSIONS ON SITE AND REPORT DISCREPANCIES TO THE ARCHITECT.
 THIS DRAWING IS PROTECTED BY COPYRIGHT.
 ALL AREAS HAVE BEEN MEASURED FROM CURRENT DRAWINGS. THEY MAY VARY BECAUSE OF (EG) SURVEY, DESIGN DEVELOPMENT, CONSTRUCTION TOLERANCES, STATUTORY REQUIREMENTS OR RE-DEFINITION OF THE AREAS TO BE MEASURED.



P2	10.04.13	SECOND ISSUE	SM	NM
P1	15.03.13	FOR PLANNING	SM	NM
No.	Date	Comment	Drawn	Chkd
Revisions				

Issue Status
tp bennett
 architecture
 interiors
 planning

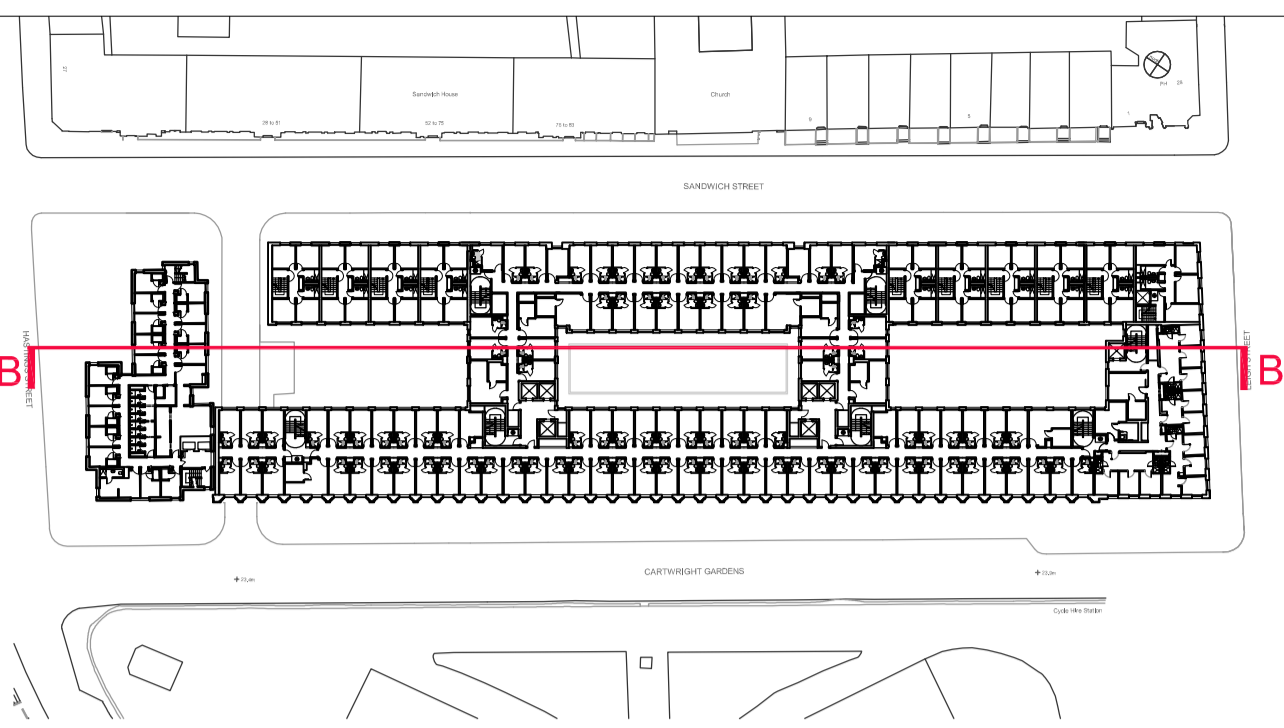
One America Street London SE1 ONE UK +44 (0) 20 7208 2000 www.tpbennt.com
 London Moscow Abu Dhabi New York

Project
 Proposed
 University of London
 Cartwright Gardens, London

Drawing Title
 Proposed Sections
 Section AA

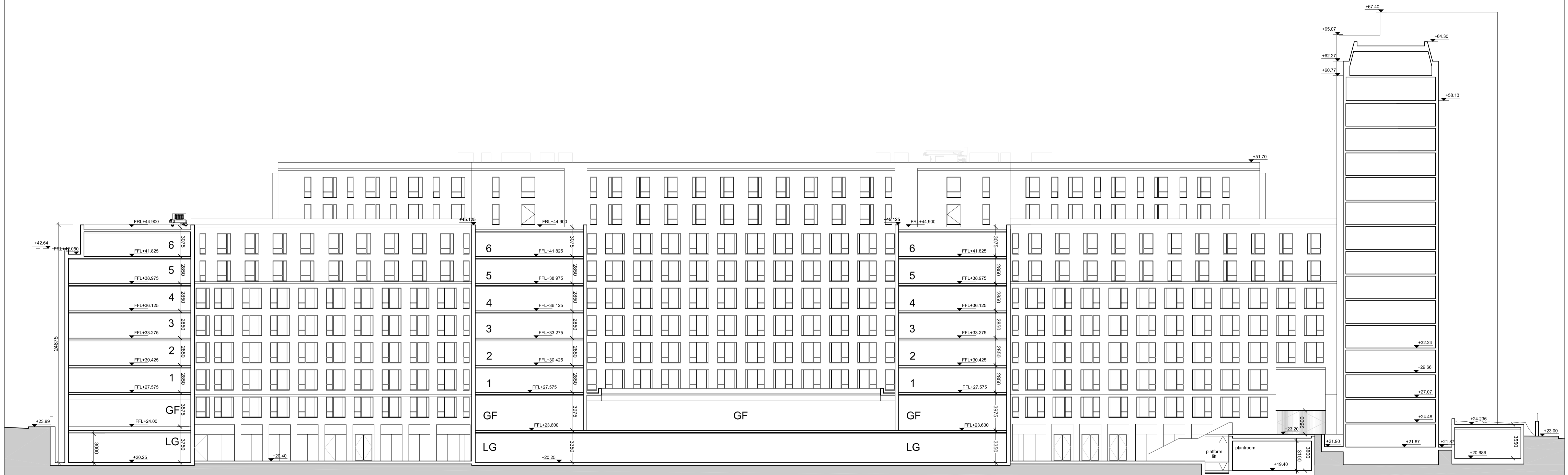
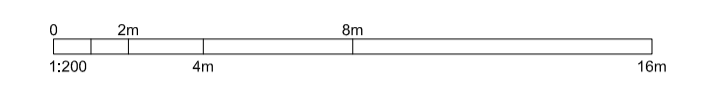
Drawn	Date	Scale @ A1/A3	Alt. Ref.
SM	09.11.12	1:200/1:400	--

tp bennett Project No.	Drawing Number	Rev
A10417	D0 300	P2



KEY PLAN

NOTES:
 DO NOT SCALE. FIGURED DIMENSIONS ONLY TO BE TAKEN FROM THIS DRAWING. CHECK DIMENSIONS ON SITE AND REPORT DISCREPANCIES TO THE ARCHITECT.
 THIS DRAWING IS PROTECTED BY COPYRIGHT.
 ALL AREAS HAVE BEEN MEASURED FROM CURRENT DRAWINGS. THEY MAY VARY BECAUSE OF (EG) SURVEY, DESIGN DEVELOPMENT, CONSTRUCTION TOLERANCES, STATUTORY REQUIREMENTS OR RE-DEFINITION OF THE AREAS TO BE MEASURED.



No.	Date	Comment	Drawn	Chkd
Revisions				

Issue Status

tp bennett
 architecture
 interiors
 planning

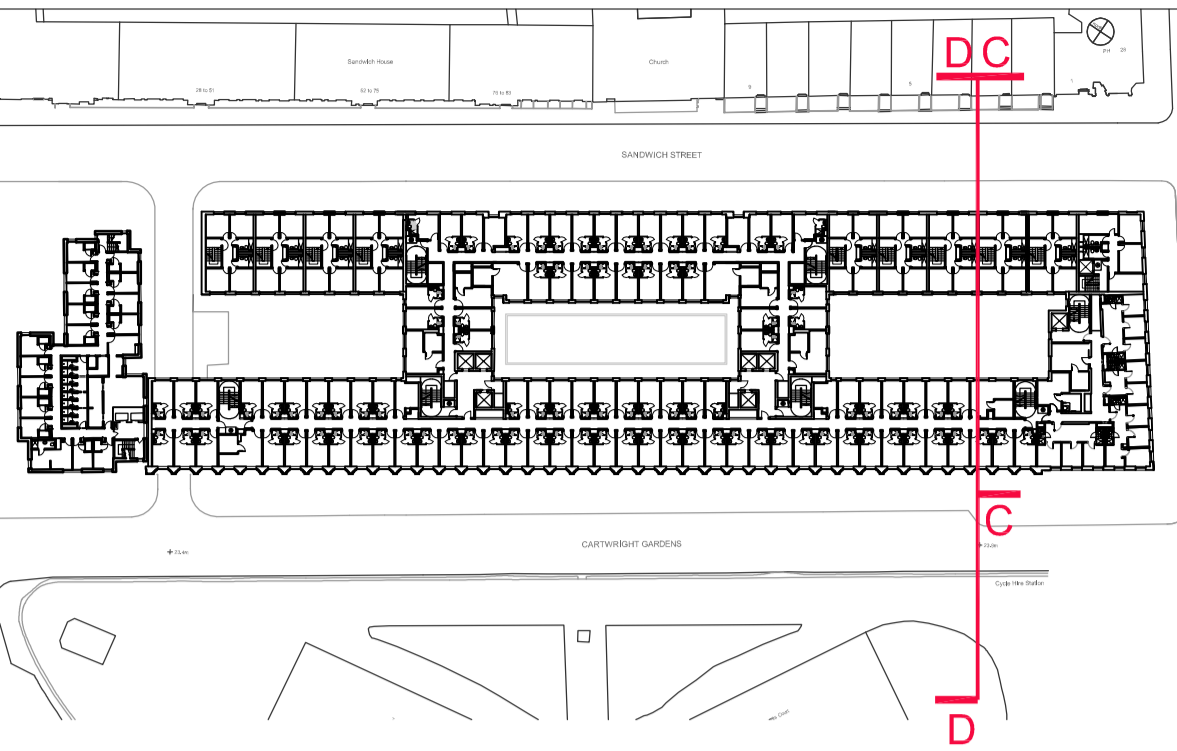
One America Street London SE1 ONE UK +44 (0) 20 7208 2000 www.tpbenett.com
 London Moscow Abu Dhabi New York

Project
Proposed University of London Cartwright Gardens, London

Drawing Title
Proposed Sections Section BB

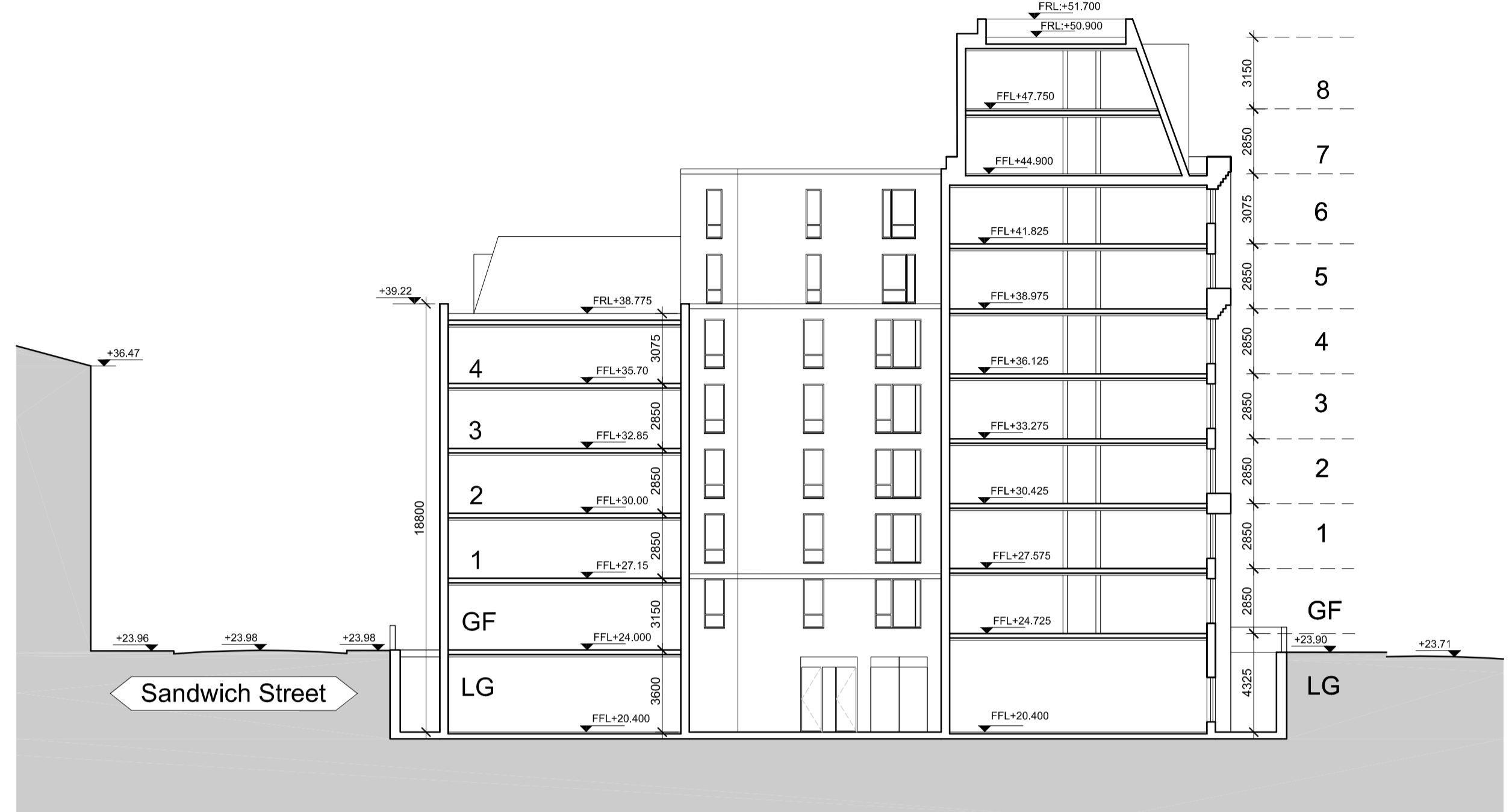
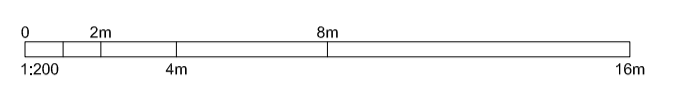
Drawn	Date	Scale @ A1/A3	Alt. Ref.
SM	09.11.12	1:200/1:400	---

tp bennett Project No.	Drawing Number	Rev
A10417	D0 301	P2

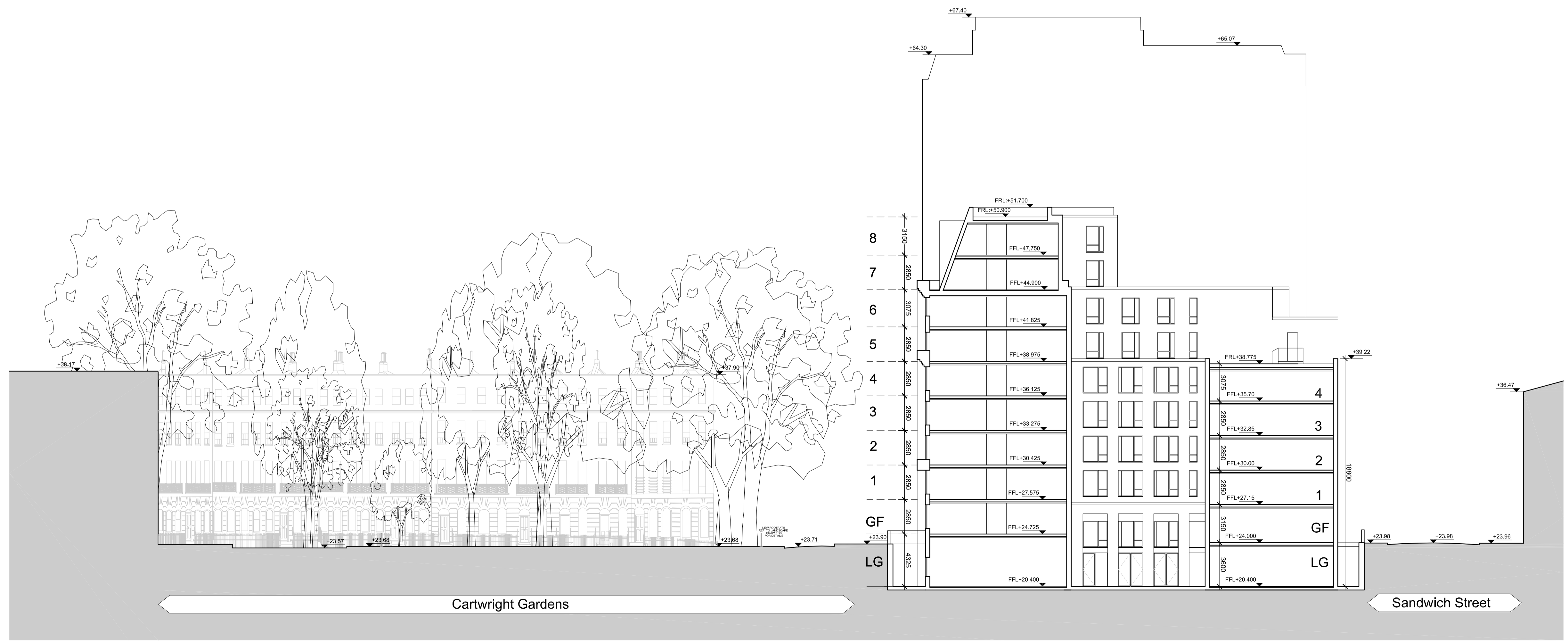


KEY PLAN

NOTES:
 DO NOT SCALE. FIGURED DIMENSIONS ONLY TO BE TAKEN FROM THIS DRAWING. CHECK DIMENSIONS ON SITE AND REPORT DISCREPANCIES TO THE ARCHITECT.
 THIS DRAWING IS PROTECTED BY COPYRIGHT.
 ALL AREAS HAVE BEEN MEASURED FROM CURRENT DRAWINGS. THEY MAY VARY BECAUSE OF (EG) SURVEY, DESIGN DEVELOPMENT, CONSTRUCTION TOLERANCES, STATUTORY REQUIREMENTS OR RE-DEFINITION OF THE AREAS TO BE MEASURED.



SECTION CC



SECTION DD

No.	Date	Comment	Issue Status	SM	NM
P2	10.04.13	REVISED IN LINE WITH CASE OFFICER COMMENTS		SM	NM
P1	15.03.13	FOR PLANNING		SM	NM

Issue Status
PLANNING
tp bennett
 architecture
 interiors
 planning

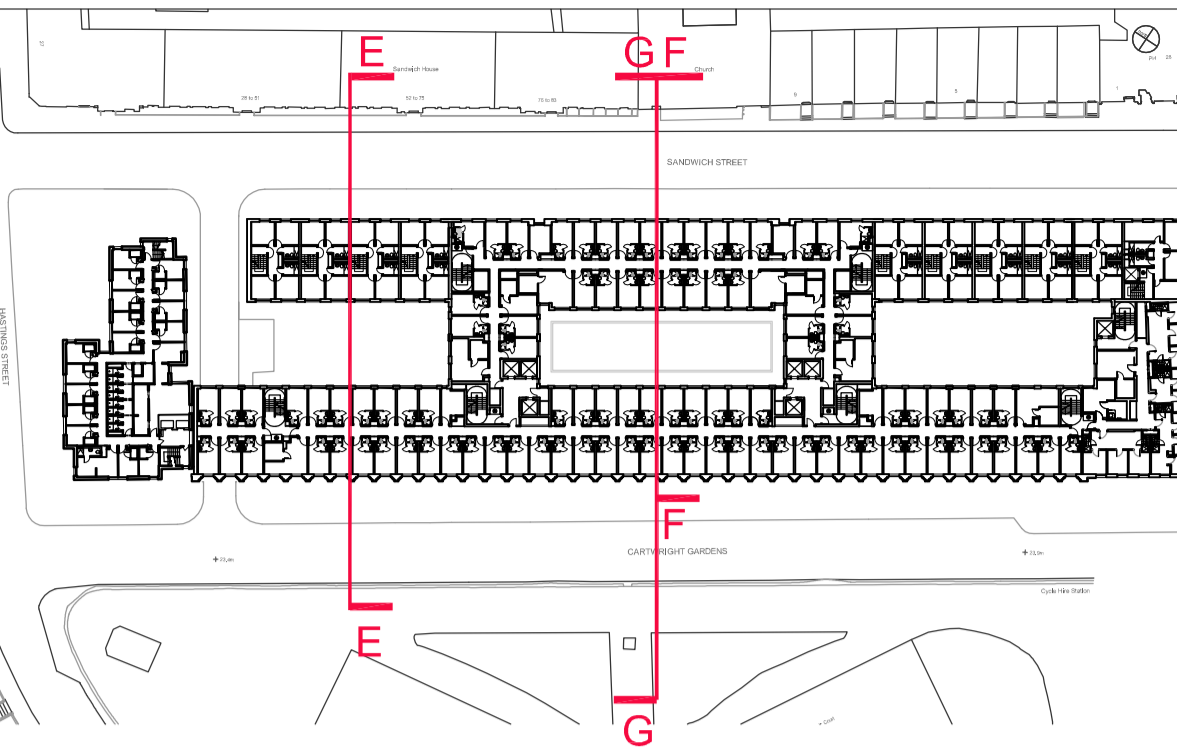
One America Street London SE1 ONE UK +44 (0) 20 7208 2000 www.tpbenneit.com
 London Moscow Abu Dhabi New York

Project
 Proposed
 University of London
 Cartwright Gardens, London

Drawing Title
 Proposed Sections
 Sections CC DD

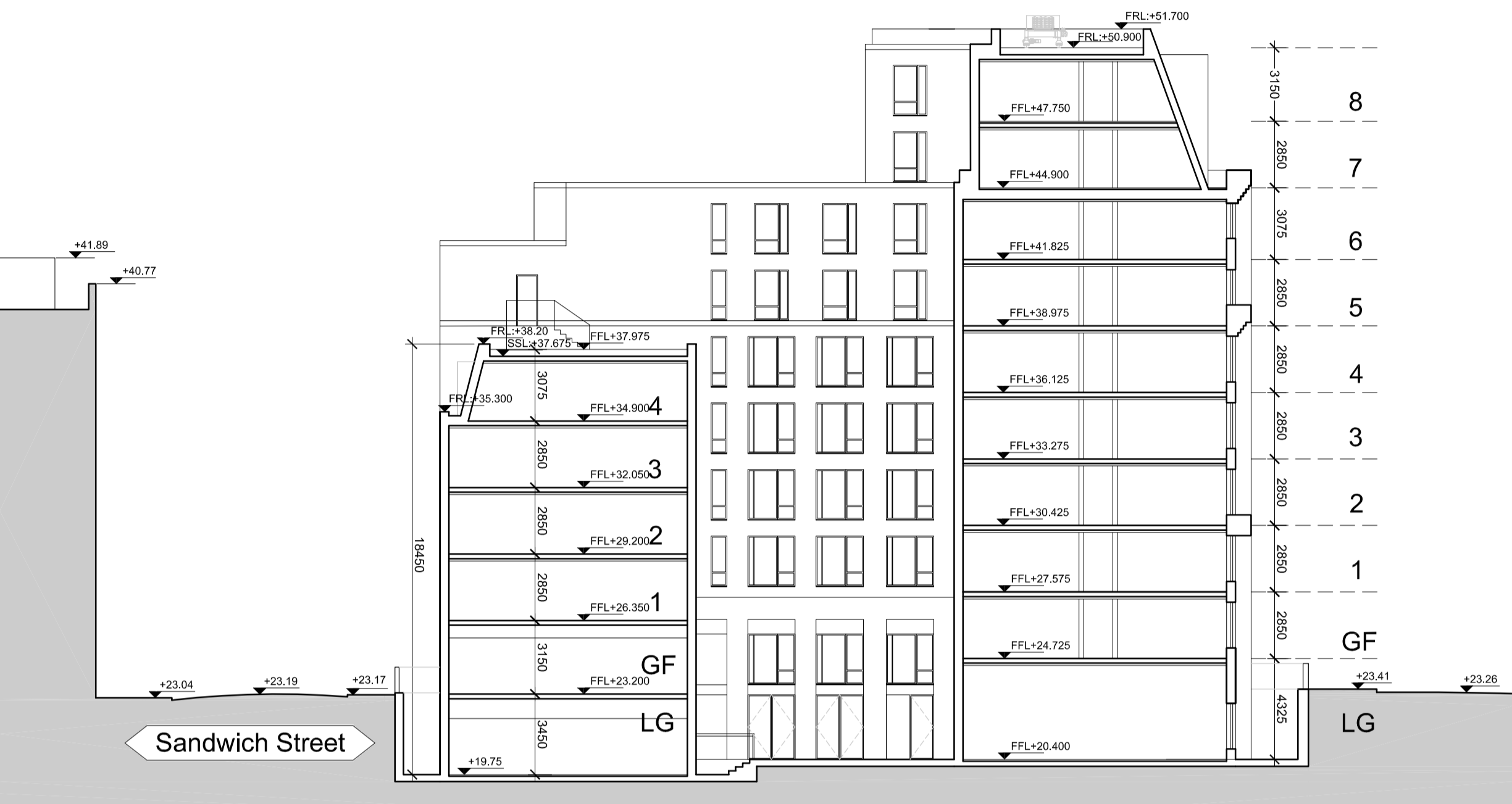
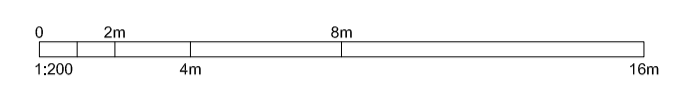
Drawn	Date	Scale @ A1/A3	Alt. Ref.
SM	09.11.12	1:200/1:400	--

tp bennett Project No.	Drawing Number	Rev
A10417	D0 310	P2

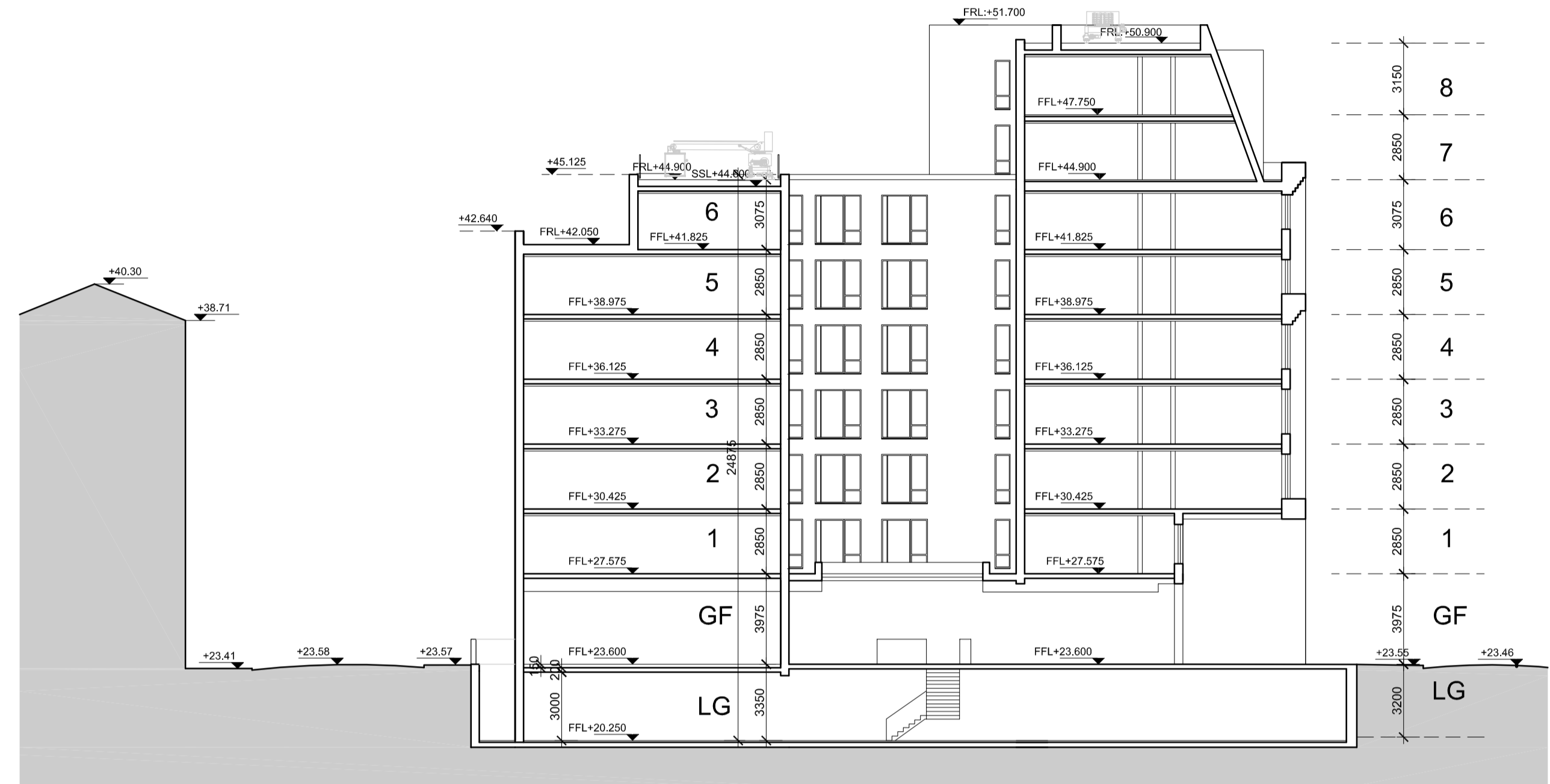


KEY PLAN

NOTES:
 DO NOT SCALE. FIGURED DIMENSIONS ONLY TO BE TAKEN FROM THIS DRAWING. CHECK DIMENSIONS ON SITE AND REPORT DISCREPANCIES TO THE ARCHITECT.
 THIS DRAWING IS PROTECTED BY COPYRIGHT.
 ALL AREAS HAVE BEEN MEASURED FROM CURRENT DRAWINGS. THEY MAY VARY BECAUSE OF (EG) SURVEY, DESIGN DEVELOPMENT, CONSTRUCTION TOLERANCES, STATUTORY REQUIREMENTS OR RE-DEFINITION OF THE AREAS TO BE MEASURED.



SECTION EE



SECTION FF



SECTION GG

No.	Date	Comment	Issue Status	SM	NM
P2	10.04.13	REVISED IN LINE WITH CASE OFFICER COMMENTS		SM	NM
P1	15.03.13	FOR PLANNING		SM	NM
				Drawn	Chk'd

Issue Status
PLANNING
tp bennett
 architecture
 interiors
 planning

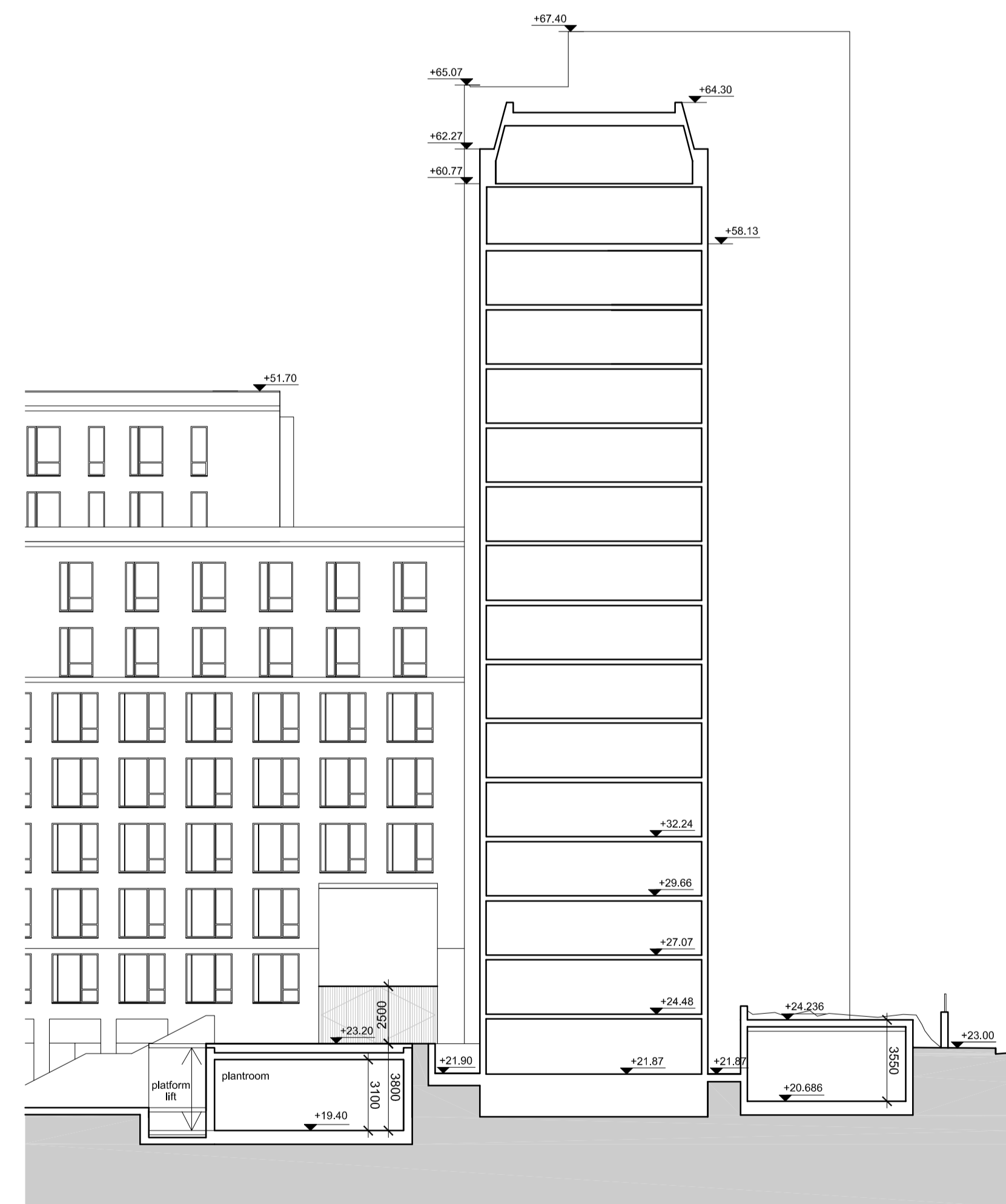
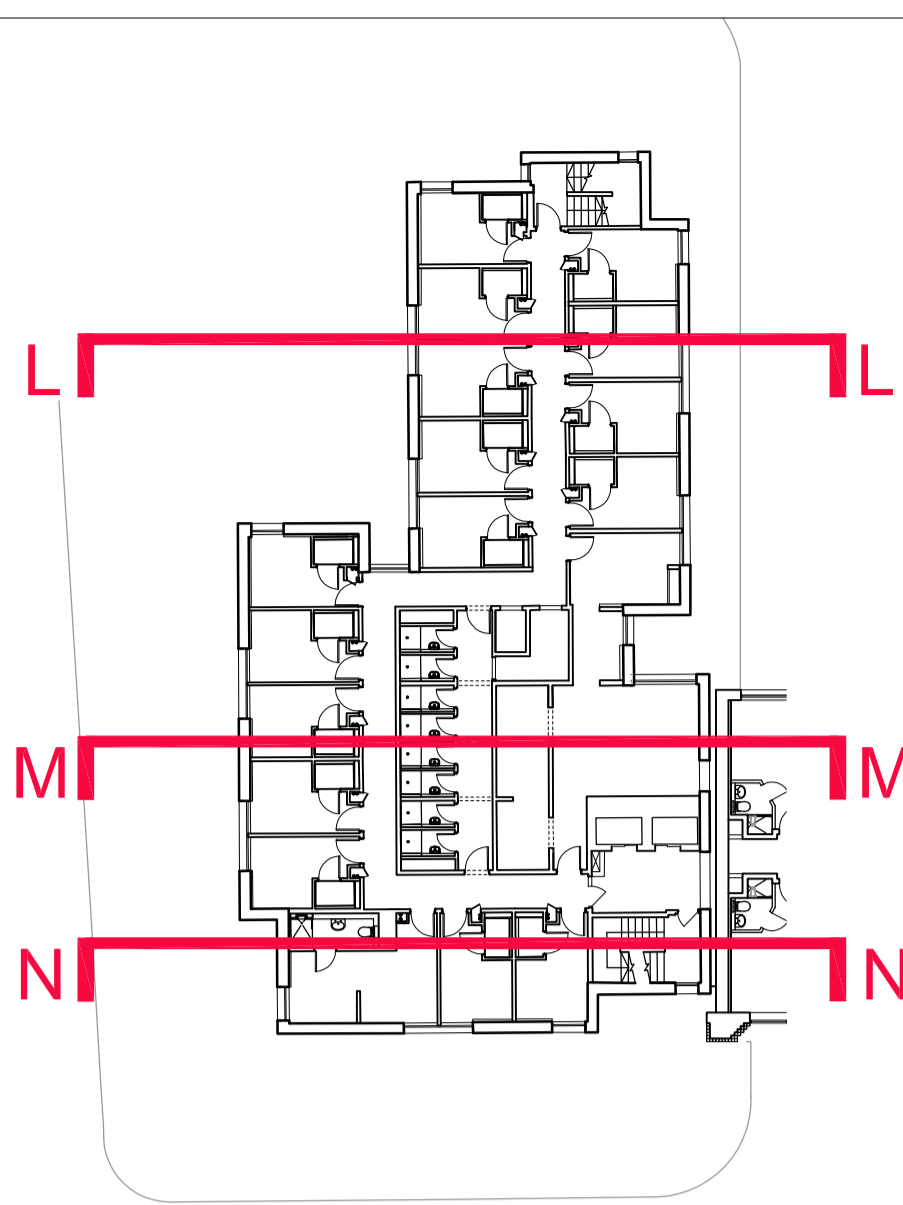
One America Street London SE1 0NE UK +44 (0) 20 7208 2000 www.tpbenntt.com
 London Moscow Abu Dhabi New York

Project
Proposed University of London Cartwright Gardens, London

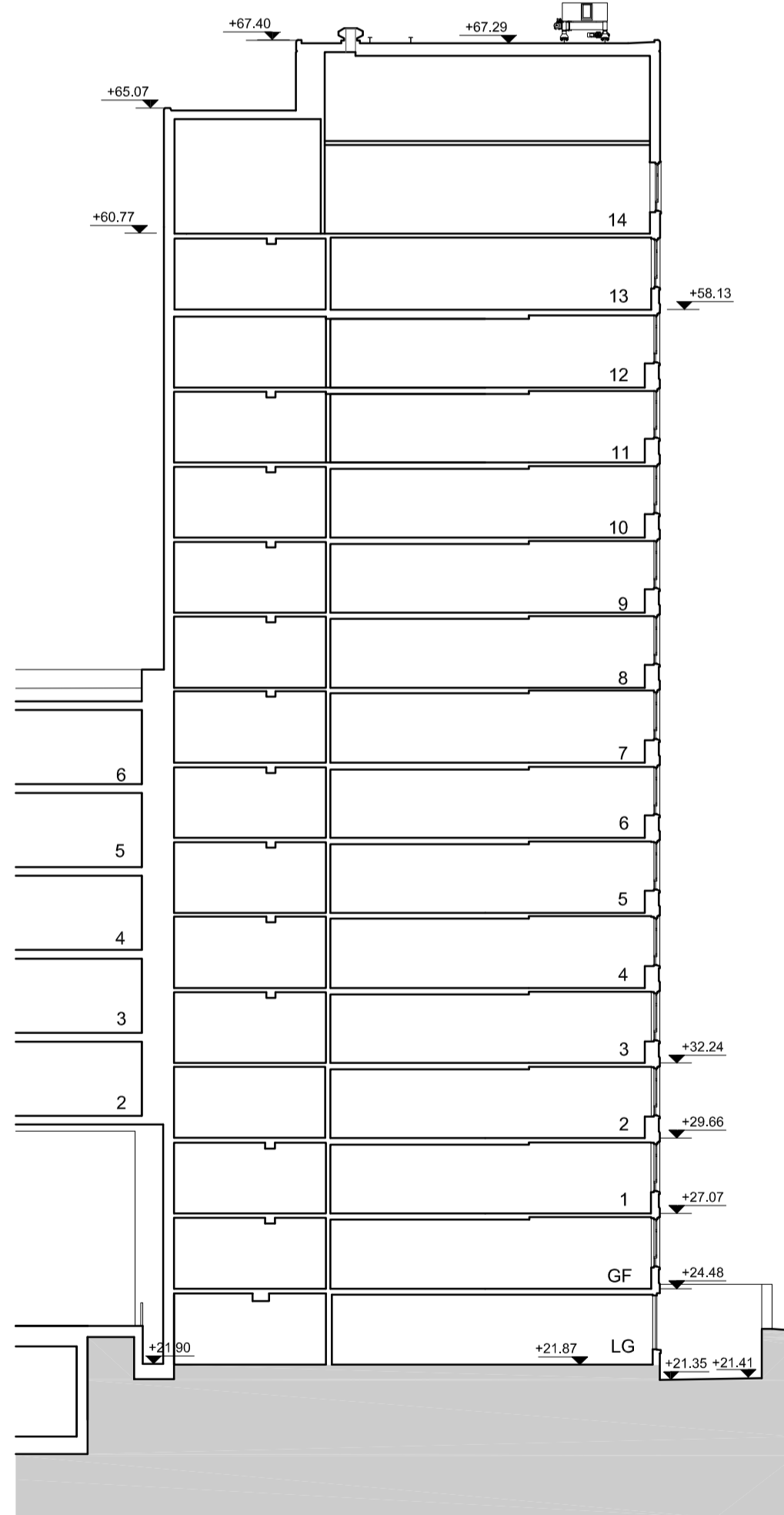
Drawing Title
Proposed Sections Sections EE FF GG

Drawn	Date	Scale @ A1/A3	Alt. Ref.
SM	09.11.12	1:200-1:400	--

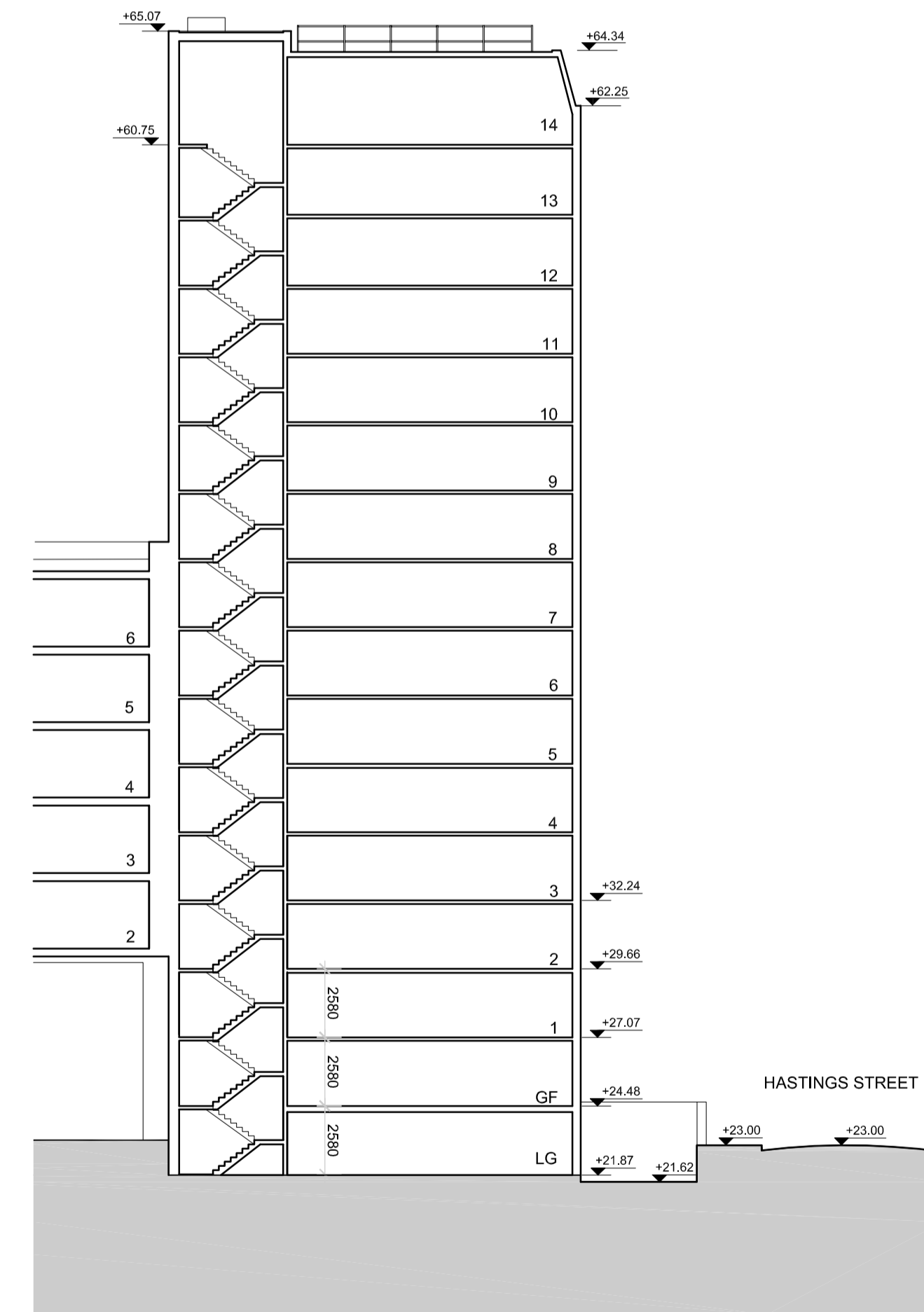
tp bennett Project No.	Drawing Number	Rev
A10417	D0 311	P2



1 SECTION LL
1:200

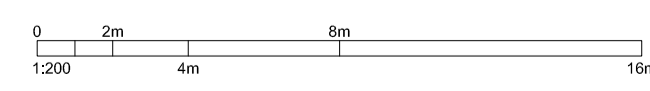


2 SECTION MM
1:200



3 SECTION NN
1:200

NOTES:
DO NOT SCALE. FIGURED DIMENSIONS ONLY TO BE TAKEN FROM THIS DRAWING. CHECK DIMENSIONS ON SITE AND REPORT DISCREPANCIES TO THE ARCHITECT.
THIS DRAWING IS PROTECTED BY COPYRIGHT.
ALL AREAS HAVE BEEN MEASURED FROM CURRENT DRAWINGS. THEY MAY VARY BECAUSE OF (EG) SURVEY, DESIGN DEVELOPMENT, CONSTRUCTION TOLERANCES, STATUTORY REQUIREMENTS OR RE-DEFINITION OF THE AREAS TO BE MEASURED.



P2	10.04.13	SECOND ISSUE	SM	NM
P1	15.03.13	FOR PLANNING	SM	NM
No.	Date	Comment	Drawn	Chk'd
Revisions				

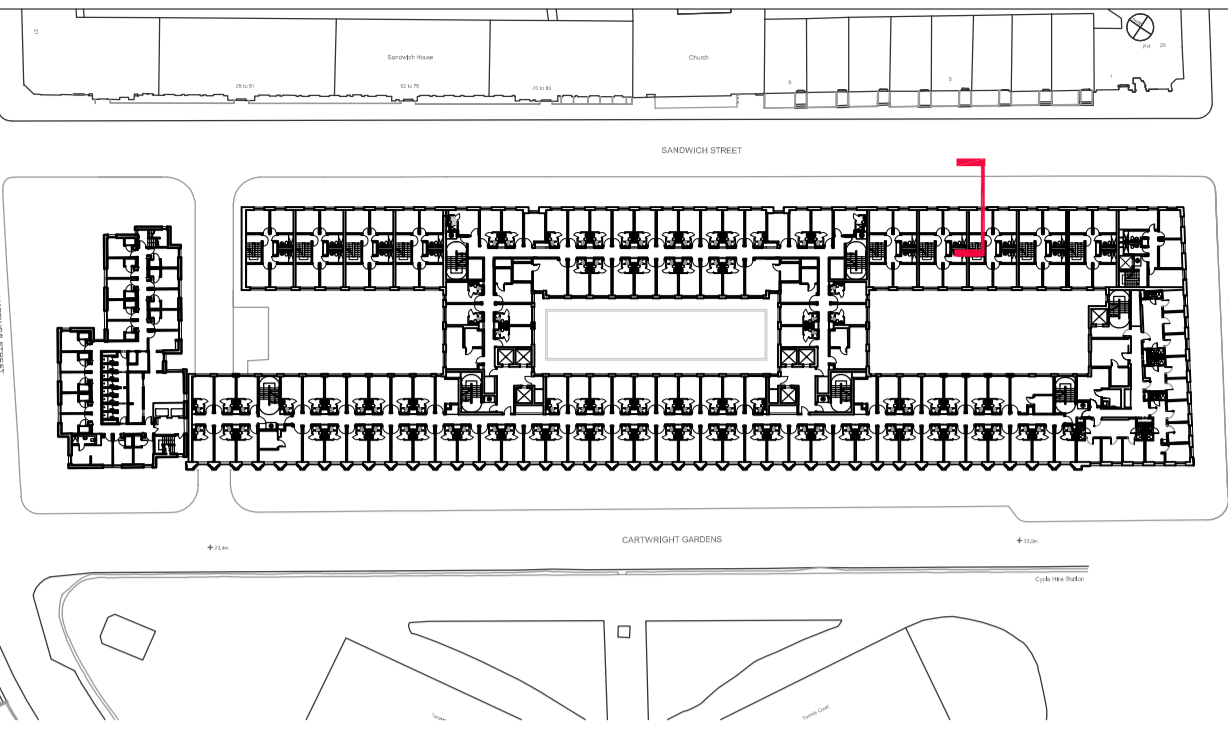
Issue Status
PLANNING
tp bennett
architecture
interiors
planning

One America Street London SE1 0NE UK +44 (0) 20 7208 2000 www.tpbennett.com
London Moscow Abu Dhabi New York

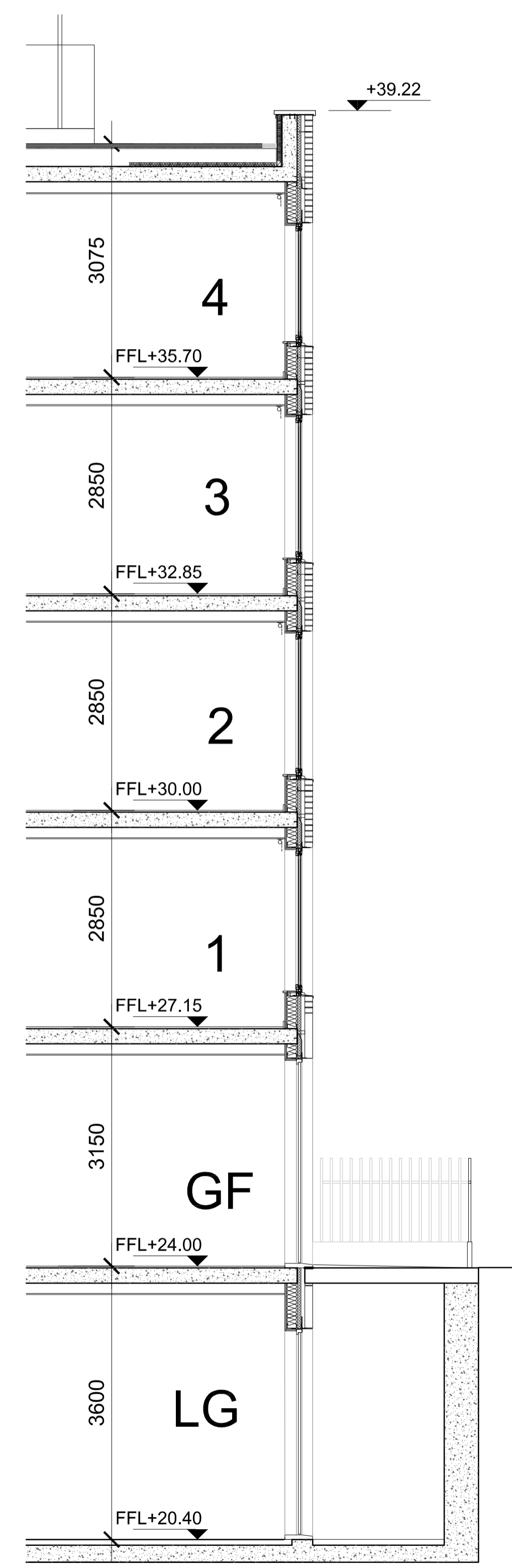
Project
Proposed
University of London
Cartwright Gardens, London
Drawing Title
Proposed Sections
Sections LL-MM-NN

Drawn	Date	Scale @ A1/A3	Alt. Ref.
SM	nov 2012	1:200/1:400	--

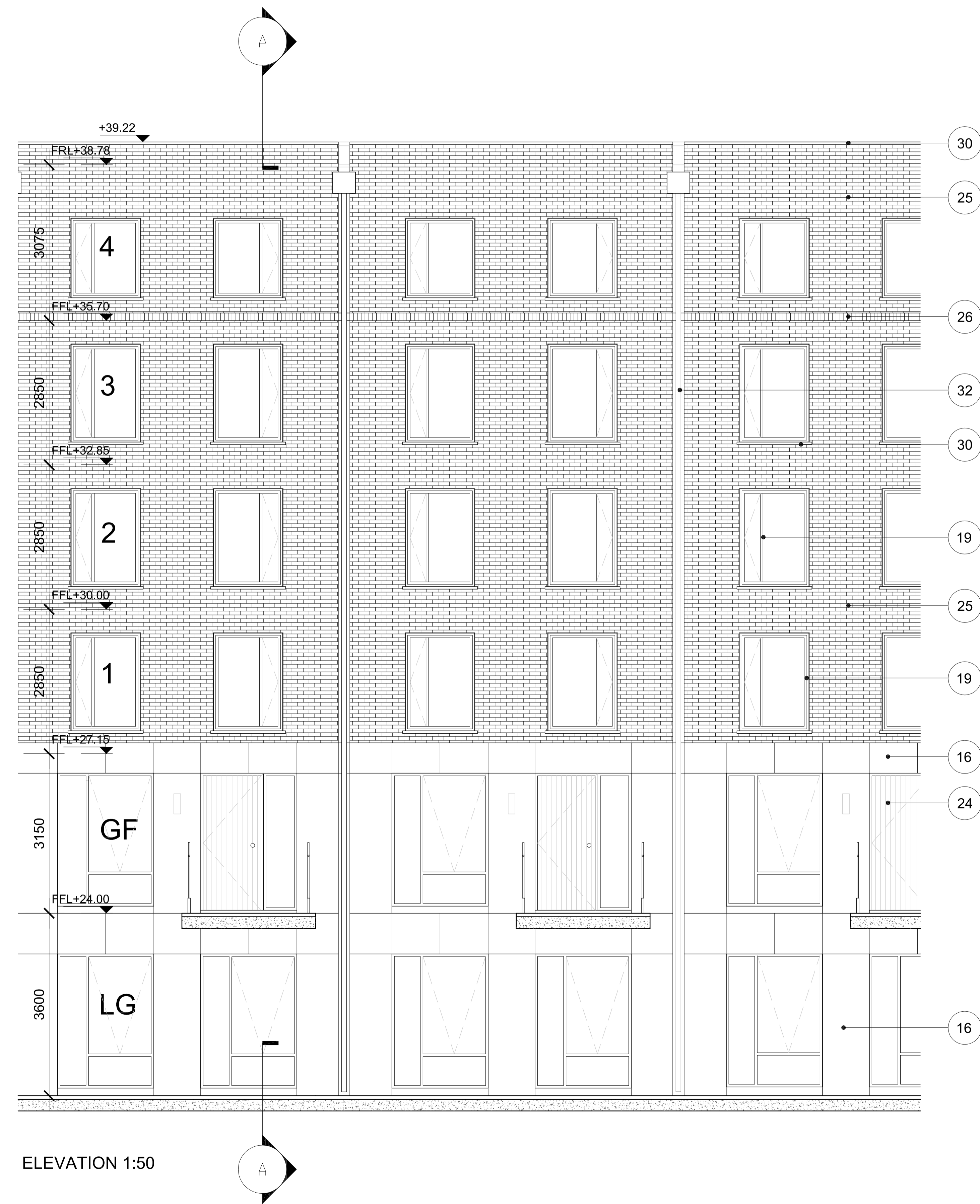
tp bennett Project No.	Drawing Number	Rev
A10417	D0 320	P2



KEY PLAN



SECTION AA 1:50



ELEVATION 1:50

NOTES:
 DO NOT SCALE. FIGURED DIMENSIONS ONLY TO BE TAKEN FROM THIS DRAWING. CHECK DIMENSIONS ON SITE AND REPORT DISCREPANCIES TO THE ARCHITECT.
 THIS DRAWING IS PROTECTED BY COPYRIGHT.
 ALL AREAS HAVE BEEN MEASURED FROM CURRENT DRAWINGS. THEY MAY VARY BECAUSE OF (EG) SURVEY, DESIGN DEVELOPMENT, CONSTRUCTION TOLERANCES, STATUTORY REQUIREMENTS OR RE-DEFINITION OF THE AREAS TO BE MEASURED.

0 0.5m 1m 2m 3m
 1:50

MATERIALS

- 1 Powder coated aluminium capping
- 2 Glazed terracotta cladding.
- 3 Reconstituted Stone dormer reveals.
- 4 As per '3' above with pattern cast into face.
- 5 Powder coated aluminium double glazed window with built in blinds and side vent
- 6 Powder coated aluminium panel.
- 7 Reconstituted stone.
- 8 Pre-cast brick panels.
- 9 Bronze anodised double glazed windows to ground and first floor windows.
- 10 Powder coated aluminium capping.
- 11 Brick with light mortar.
- 12 Reconstituted stone.
- 13 Powder coated aluminium double glazed windows divided centrally with n.1 fixed panel and n.1 tilt panel.
- 14 Reconstituted stone.
- 15 Brick with dark mortar.
- 16 Reconstituted stone.
- 17 Bronze anodised double glazed fixed windows and doors to ground floor.
- 18 Brick- to match existing or similar approved.
- 19 Windows - PPC Alum double glazed windows.
- 20 Horizontal banding in render.
- 21 Brick infill to window sill with light mortar (horizontal stack bond).
- 22 Mansard - Standing seam Zinc rainscreen cladding.
- 23 Brick with light mortar.
- 24 High gloss paint finish timber doors in either Azure blue / Sand yellow / Red orange / Reseda Green.
- 25 Brick with light mortar.
- 26 Brick banding and Feature Colour with dark mortar (horizontal stack bond in recess).
- 27 plant vents and escape exits ground floor / lower ground floor- dark olive green.
- 28 Vent Panel - Laser Cut PPC - Green Belge.
- 29 Bronze Anodised Metal Fascia Panel.
- 30 Reconstituted Stone sills / one way weathered coping
- 31 White render
- 32 Recessed downpipe in black

Issue Status		SM	NM
P2	10.04.13 SECOND ISSUE		
P1	15.03.13 FOR PLANNING		
No.	Date	Comment	Drawn Chk'd
Revisions			

Issue Status
PLANNING

tp bennett
 architecture
 interiors
 planning

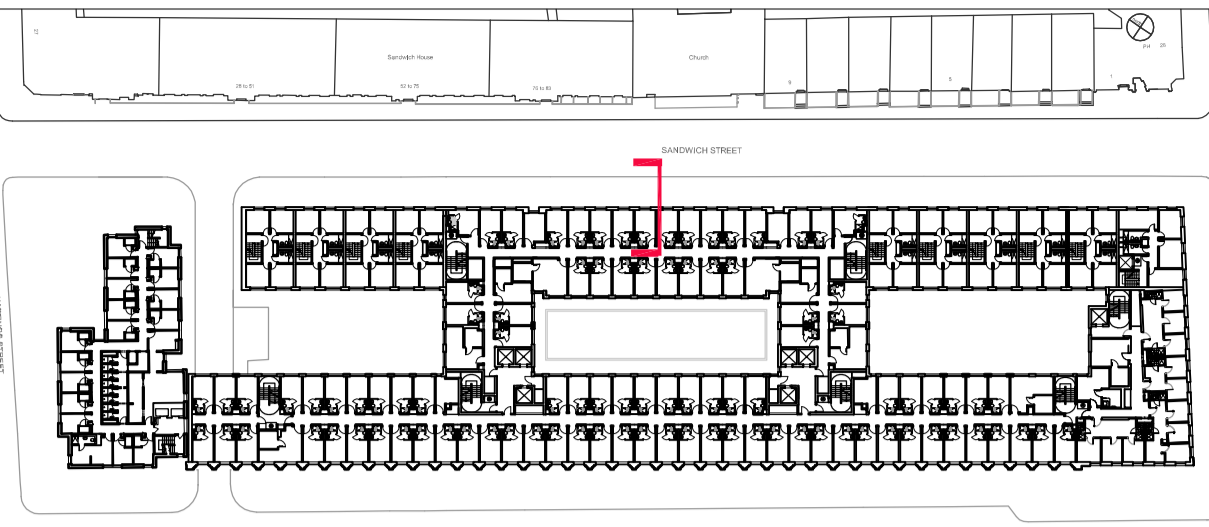
One America Street London SE1 0NE UK +44 (0) 20 7298 2000 www.tpbenntt.com
 London Moscow Abu Dhabi New York

Project
Proposed University of London Cartwright Gardens, London

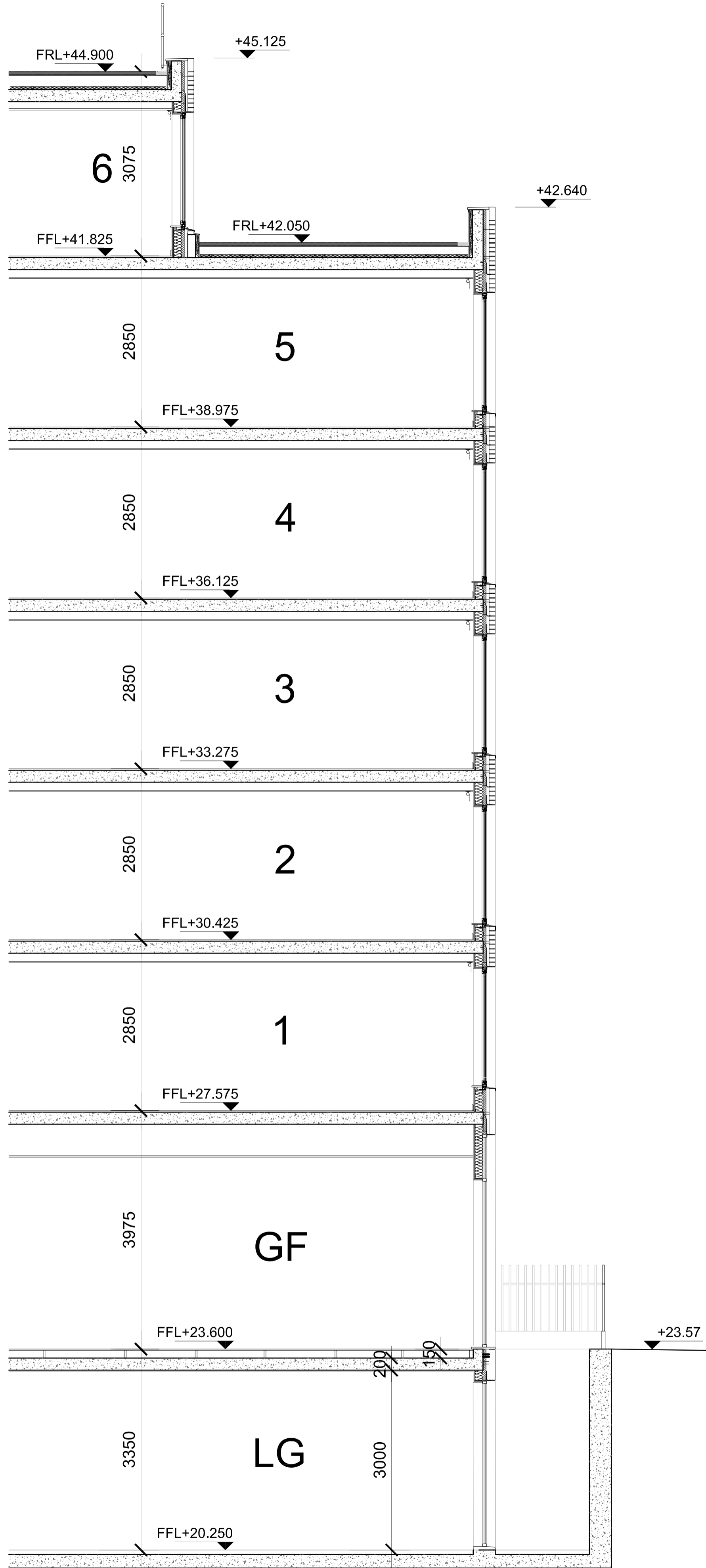
Drawing Title
Typical Bay Town Houses

Drawn	Date	Scale @ A1/A3	Alt. Ref.
SM	09.11.12	1:50/1:100	--

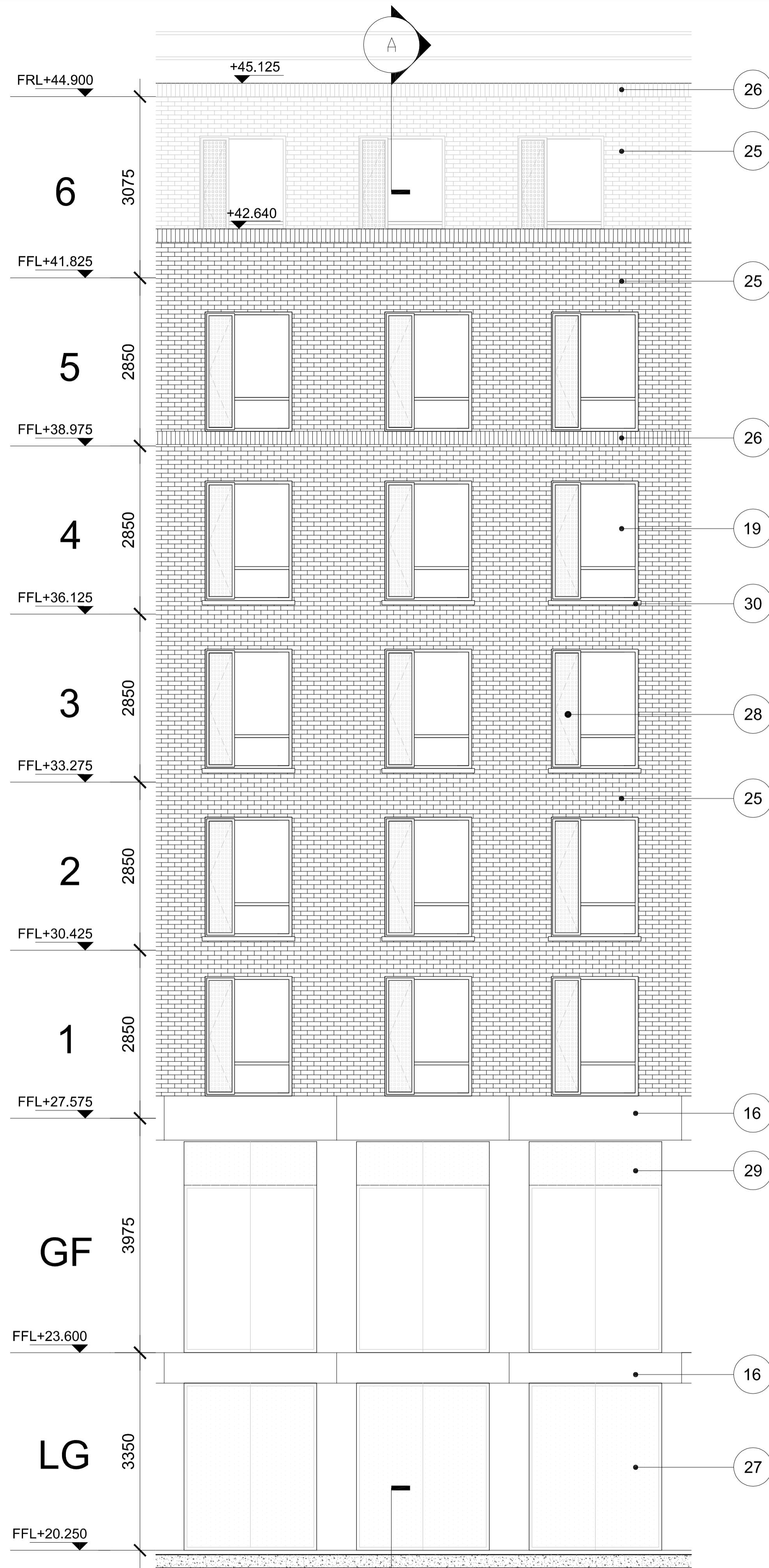
tp bennett Project No.	Drawing Number	Rev
A10417	DO 400	P2



KEY PLAN

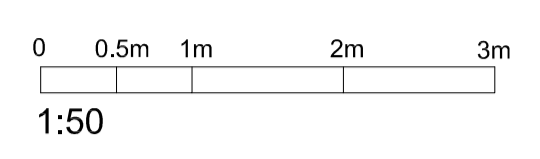


SECTION AA 1:50



ELEVATION 1:50

NOTES:
DO NOT SCALE. FIGURED DIMENSIONS ONLY TO BE TAKEN FROM THIS DRAWING. CHECK DIMENSIONS ON SITE AND REPORT DISCREPANCIES TO THE ARCHITECT.
THIS DRAWING IS PROTECTED BY COPYRIGHT.
ALL AREAS HAVE BEEN MEASURED FROM CURRENT DRAWINGS. THEY MAY VARY BECAUSE OF (EG) SURVEY, DESIGN DEVELOPMENT, CONSTRUCTION TOLERANCES, STATUTORY REQUIREMENTS OR RE-DEFINITION OF THE AREAS TO BE MEASURED.



MATERIALS

- 1 Powder coated aluminium capping
- 2 Glazed terracotta cladding.
- 3 Reconstituted Stone dormer reveals.
- 4 As per '3' above with pattern cast into face.
- 5 Powder coated aluminium double glazed window with built in blinds and side vents.
- 6 Powder coated aluminium panel.
- 7 Reconstituted stone.
- 8 Pre-cast brick panels.
- 9 Bronze anodised double glazed windows to ground and first floor windows.
- 10 Powder coated aluminium capping.
- 11 Brick with light mortar.
- 12 Reconstituted stone.
- 13 Powder coated aluminium double glazed windows divided centrally with n.1 fixed panel and n.1. till panel.
- 14 Reconstituted stone.
- 15 Brick with dark mortar.
- 16 Reconstituted stone.
- 17 Bronze anodised double glazed fixed windows and doors to ground floor.
- 18 Brick- to match existing or similar approved.
- 19 Windows - PPC Alum double glazed windows.
- 20 Horizontal banding in render.
- 21 Brick infill to window sill with light mortar (horizontal stack bond).
- 22 Mansard - Standing seam Zinc rainscreen cladding.
- 23 Brick with light mortar.
- 24 High gloss paint finish timber doors in either Azure blue / Sand yellow / Red orange / Reseda Green.
- 25 Brick with light mortar.
- 26 Brick banding and Feature Colour with dark mortar (horizontal stack bond in recess).
- 27 plant vents and escape exits ground floor /lower ground floor- dark olive green.
- 28 Vent Panel - Laser Cut PPC - Green Beige.
- 29 Bronze Anodised Metal Fascia Panel.
- 30 Reconstituted Stone sills / one way weathered coping
- 31 White render
- 32 Recessed downpipe in black

P2	10.04.13	SECOND ISSUE	SM	NM
P1	15.03.13	FOR PLANNING	SM	NM
No.	Date	Comment	Drawn	Chk'd
Revisions				

Issue Status
PLANNING
tp bennett
architecture
interiors
planning

One America Street London SE1 0NE UK +44 (0) 20 7208 2000 www.tpbenntt.com
London Moscow Abu Dhabi New York

Project
Proposed
University of London
Cartwright Gardens, London

Drawing Title
Typical Bay
Main Building Sandwich Street

Drawn	Date	Scale @ A1/A3	Alt. Ref.
SM	09.11.12	1:50/1:100	--
tp bennett Project No.	Drawing Number	Rev	
A10417	D0 401	P2	