

TOP OF PLANT +141.060m

PARAPET +138.660m

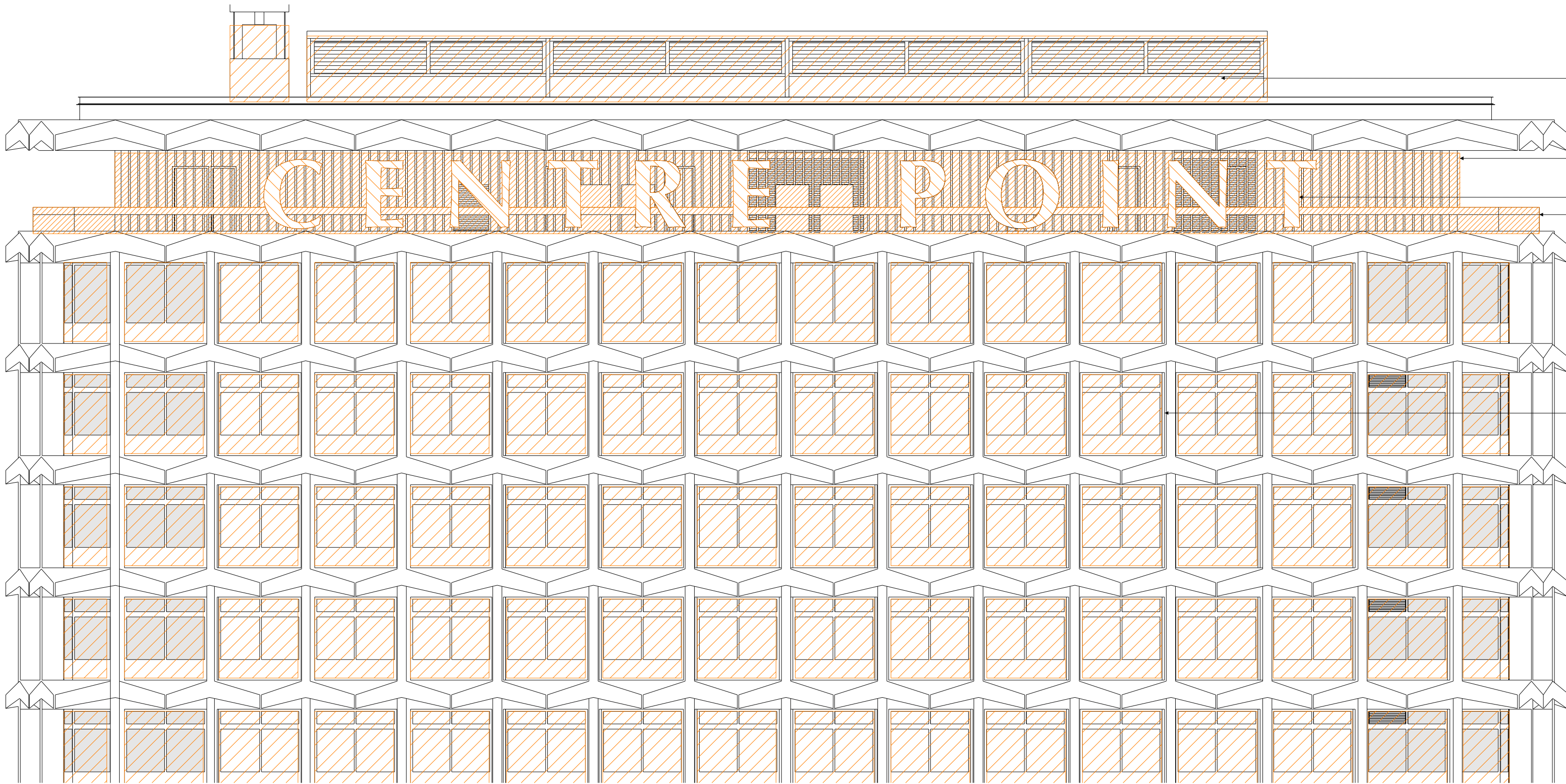
THIRTY-FOUR FLOOR

THIRTY-THIRD FLOOR

THIRTY-SECOND FLOOR

THIRTY-FIRST FLOOR

TYPICAL FLOOR
FIFTH - THIRTIETH



Plantroom screen and all plant on
roof level to be removed in
preparation for replacement.

Plantroom screen and all plant on
level 34 to be removed.

Signage removed in preparation for
replacement.

Balustrade removed in preparation for
replacement.

All windows to be removed in
preparation for replacement.

1 EXISTING ELEVATION EAST DEMOLITIONS 1:100
UPPER LEVELS

FOURTH FLOOR

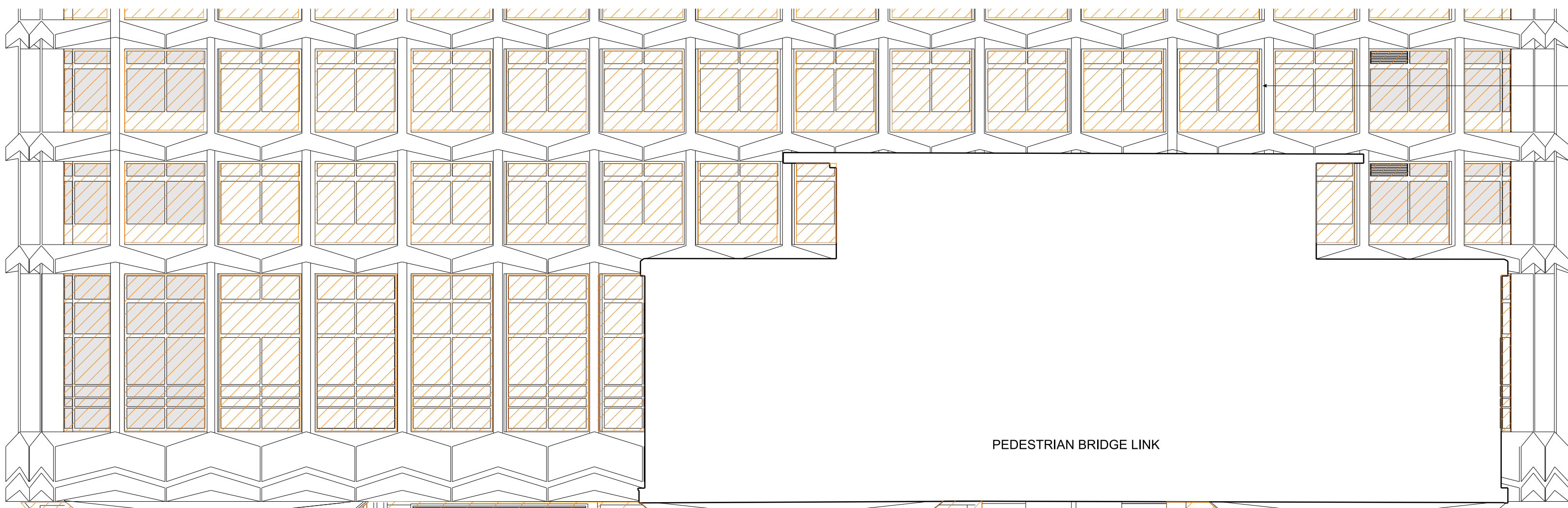
THIRD FLOOR

SECOND FLOOR

FIRST FLOOR
FFL +33.150m

MEZZANINE FLOOR
FFL +28.570m

GROUND FLOOR
FFL +25.710m



All windows to be removed in
preparation for replacement.

Remove non-original 'light-box'
entrance extension.
Remove existing non-original
threshold finishes to public realm.

Remove non-original entrance canopy.

Service vent to be removed and finish
made good with same specification.

ANDREW BORDE STREET

Remove all existing fenestration and glazing.

Remove existing external staircase in preparation for
relocation internally.

Remove all existing non-original
fenestration and glazing in
preparation for replacement.

NEW OXFORD STREET

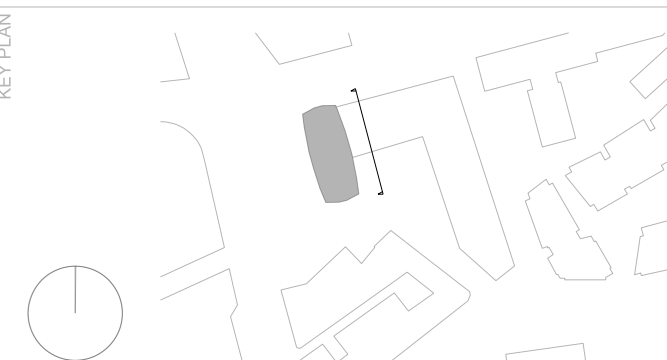
2 EXISTING ELEVATION EAST DEMOLITIONS 1:100
LOWER LEVELS

NOTES
DO NOT SCALE FROM THIS DRAWING.
CONTRACTOR TO CHECK ALL DIMENSIONS ON SITE.
ANY DISCREPANCIES TO BE REPORTED TO THE ARCHITECT
IMMEDIATELY.
COPYRIGHT CONRAN AND PARTNERS LIMITED ©

| AREA KEY | RESIDENTIAL | |
|----------|---------------------|------------|
| | RETAIL | PLANT |
| KEY | CIRCULATION | CAR PARK |
| | BACK OF HOUSE | OFFICE |
| | RESIDENTIAL AMENITY | DEMOLITION |
| | EXISTING STRUCTURE | PARTITION |
| | PROPOSED STRUCTURE | |

Survey Information Prepared by Plowman Craven.
Original Drawing:
25411E-01C-Elevations

| REVISIONS | PL1 | 01.04.13 | PLANNING ISSUE |
|-----------|-----|----------|----------------|
| | REV | DATE | DESCRIPTION |



STATUS
PLANNING

CONRAN+ PARTNERS
Architects Designers
22 Shad Thames London SE1 2YU
T: 020 7403 8899
cp@conran.com www.conranandpartners.com

Centre Point
101-103 New Oxford Street
London, WC1A 1DD

TITLE
DEMOLITION ELEVATIONS - EAST

CENTRE POINT TOWER

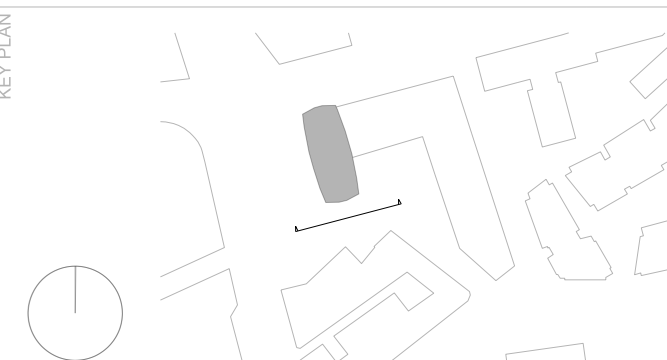
| CHECKED | DRAWN | NT | 552 | 19251-CPT | PL1 |
|---------|------------|-------|------|-----------|----------|
| NE | SCALE @ A1 | 1:100 | SIZE | DATE | REV |
| | | | A1 | APR 13 | 01.04.13 |

NOTES:
DO NOT SCALE FROM THIS DRAWING.
CONTRACTOR TO CHECK ALL DIMENSIONS ON SITE.
ANY DISCREPANCIES TO BE REPORTED TO THE ARCHITECT IMMEDIATELY.
COPYRIGHT CONRAN AND PARTNERS LIMITED ©

| | | |
|----------|--------------------|--|
| AREA KEY | RESIDENTIAL | |
| | RETAIL | |
| | PLANT | |
| | CIRCULATION | |
| | CAR PARK | |
| | BACK OF HOUSE | |
| | OFFICE | |
| KEY | DEMOLITION | |
| | EXISTING STRUCTURE | |
| | PARTITION | |
| | PROPOSED STRUCTURE | |

Survey Information Prepared by Plowman Craven.
Original Drawing:
25411E-01C-Elevations

| | | | |
|-----------|-----|----------|----------------|
| REVISIONS | PL1 | 01.04.13 | PLANNING ISSUE |
| | REV | DATE | DESCRIPTION |



STATUS
PLANNING

CONRAN+ PARTNERS
Architects Designers
22 Shad Thames London SE1 2YU
T: 020 7403 8899
cp@conran.com www.conranandpartners.com

Centre Point
101-103 New Oxford Street
London, WC1A 1DD

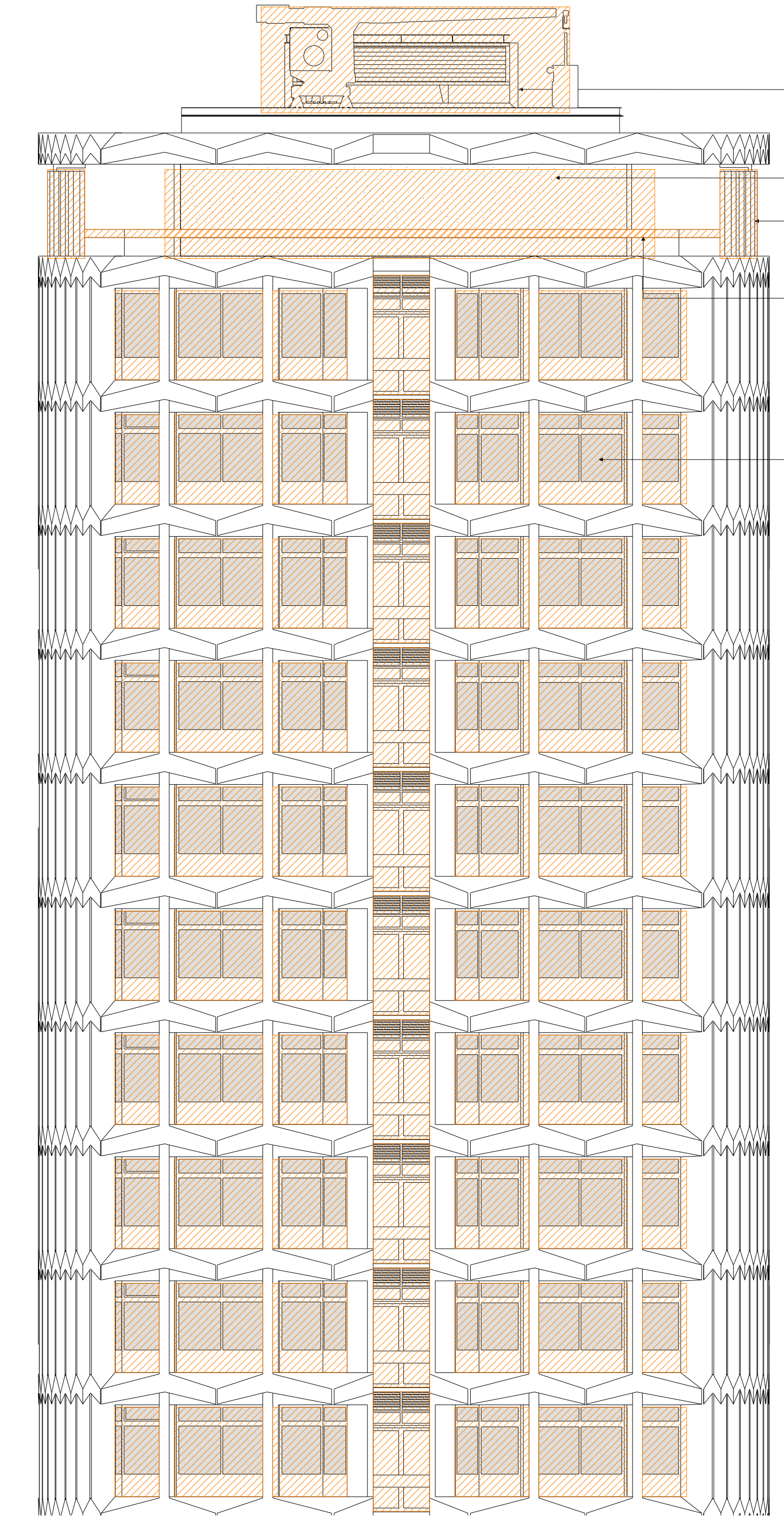
TITLE
DEMOLITION ELEVATIONS - SOUTH

CENTRE POINT TOWER

| | | | | | | |
|---------|----|-------|-----------|-----------|--------|----------|
| DRAWN | NT | 552 | JOB # | 19252-CPT | REV | PL1 |
| CHECKED | NE | 1:100 | SCALE @A1 | SIZE | DATE | DATE |
| | | | | A1 | APR 13 | 01.04.13 |

TOP OF PLANT +141.060m
PARAPET +138.660m
THIRTY-FOURTH FLOOR
THIRTY-THIRD FLOOR
THIRTY-SECOND FLOOR
THIRTY-FIRST FLOOR
THIRTIETH FLOOR
TWENTY-NINTH FLOOR
TWENTY-EIGHTH FLOOR
TWENTY-SEVENTH FLOOR
TWENTY-SIXTH FLOOR
TWENTY-FIFTH FLOOR
TYPICAL FLOOR
ELEVENTH - TWENTY-FOURTH

1 SOUTH ELEVATION DEMOLITIONS 1:100
UPPER LEVELS



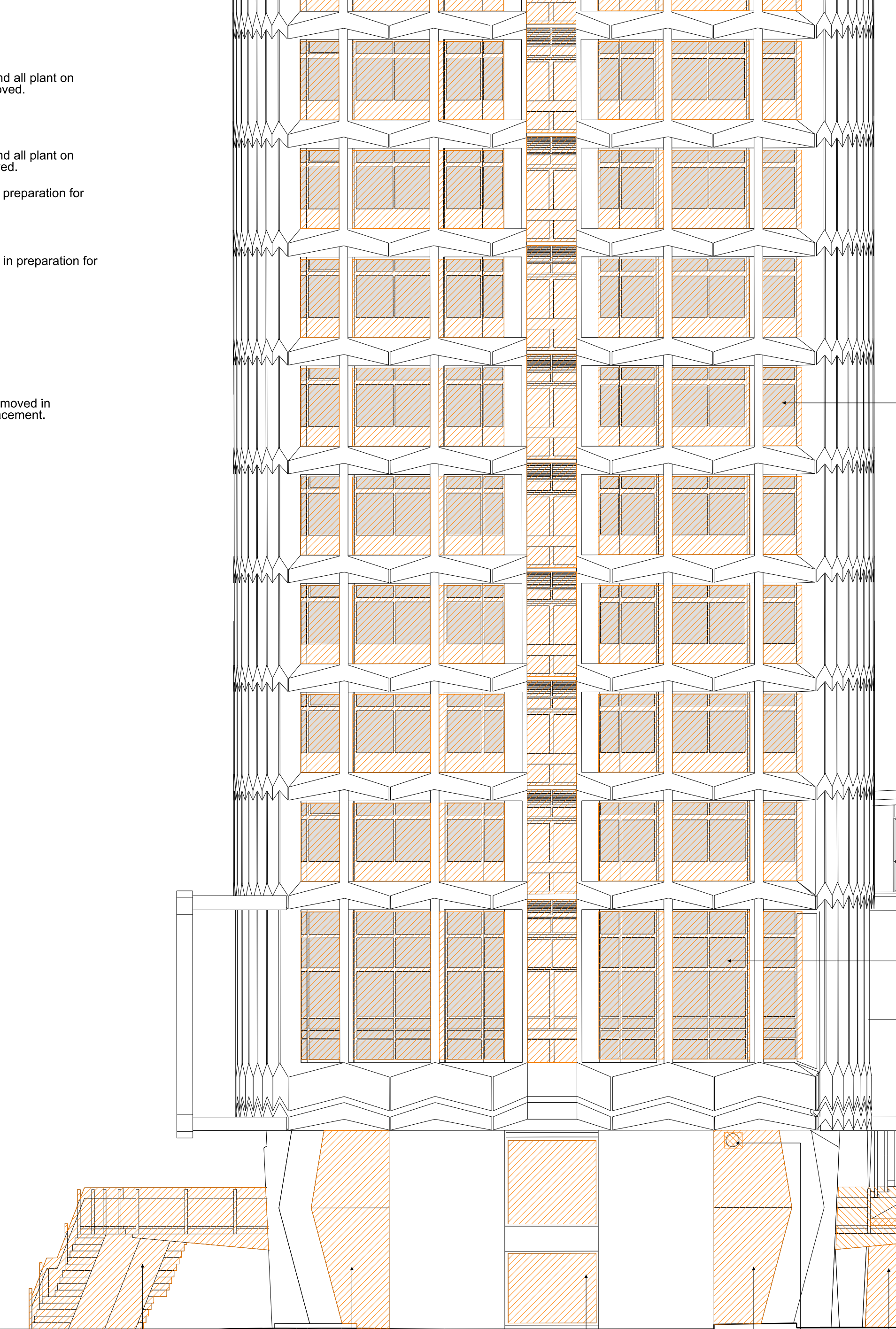
Plantroom screen and all plant on roof level to be removed.

Plantroom screen and all plant on level 34 to be removed.

Signage removed in preparation for replacement.

Balustrade removed in preparation for replacement.

All windows to be removed in preparation for replacement.



All windows to be removed in preparation for replacement.

All windows to be removed in preparation for replacement.

PEDESTRIAN BRIDGE LINK

All windows to be removed in preparation for replacement.

Remove glazing in preparation for replacement.

Remove external staircase in preparation for relocation internally.

Remove non-original 'light-box' entrance extension. Remove existing non-original threshold finishes.

Service vent to be removed and finish made good with same specification.

Remove non-original stone cladding in preparation for replacement.

2 SOUTH ELEVATION DEMOLITIONS 1:100
LOWER LEVELS

CHARING CROSS ROAD

NEW OXFORD STREET

TOP OF PLANT +141.060m
▽

PARAPET +138.660m
▽

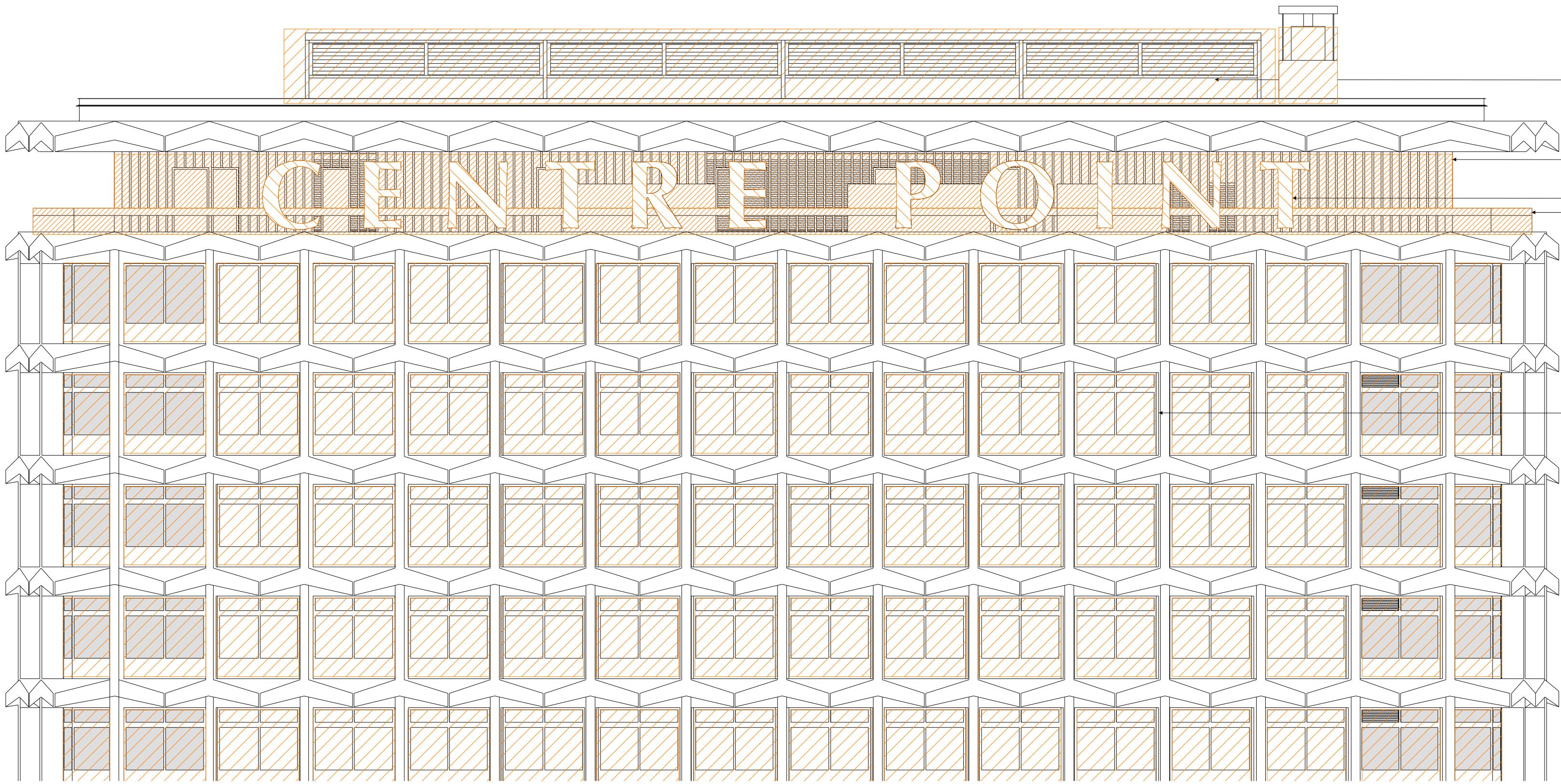
THIRTY-FOUR FLOOR

THIRTY-THIRD FLOOR

THIRTY-SECOND FLOOR

THIRTY-FIRST FLOOR

TYPICAL FLOOR
FIFTH - THIRTIETH
▽



Plantroom screen and all plant on
roof level to be removed.

Plantroom screen and all plant on
level 34 to be removed.

Signage removed in preparation for
replacement.

Balustrade removed in preparation for
replacement.

All windows to be removed in
preparation for replacement.

NOTES
DO NOT SCALE FROM THIS DRAWING.
CONTRACTOR TO CHECK ALL DIMENSIONS ON SITE.
ANY DISCREPANCIES TO BE REPORTED TO THE ARCHITECT
IMMEDIATELY.
COPYRIGHT CONRAN AND PARTNERS LIMITED ©

AREA KEY

RESIDENTIAL



RETAIL



PLANT



CIRCULATION



CAR PARK



BACK OF HOUSE



OFFICE



RESIDENTIAL AMENITY



KEY

DEMOLITION



EXISTING STRUCTURE



PARTITION



PROPOSED STRUCTURE



Survey Information Prepared by Plowman Craven.
Original Drawing:
25411E-01C-Elevations

1 EXISTING ELEVATION WEST DEMOLITIONS 1:100
UPPER LEVELS

FOURTH FLOOR

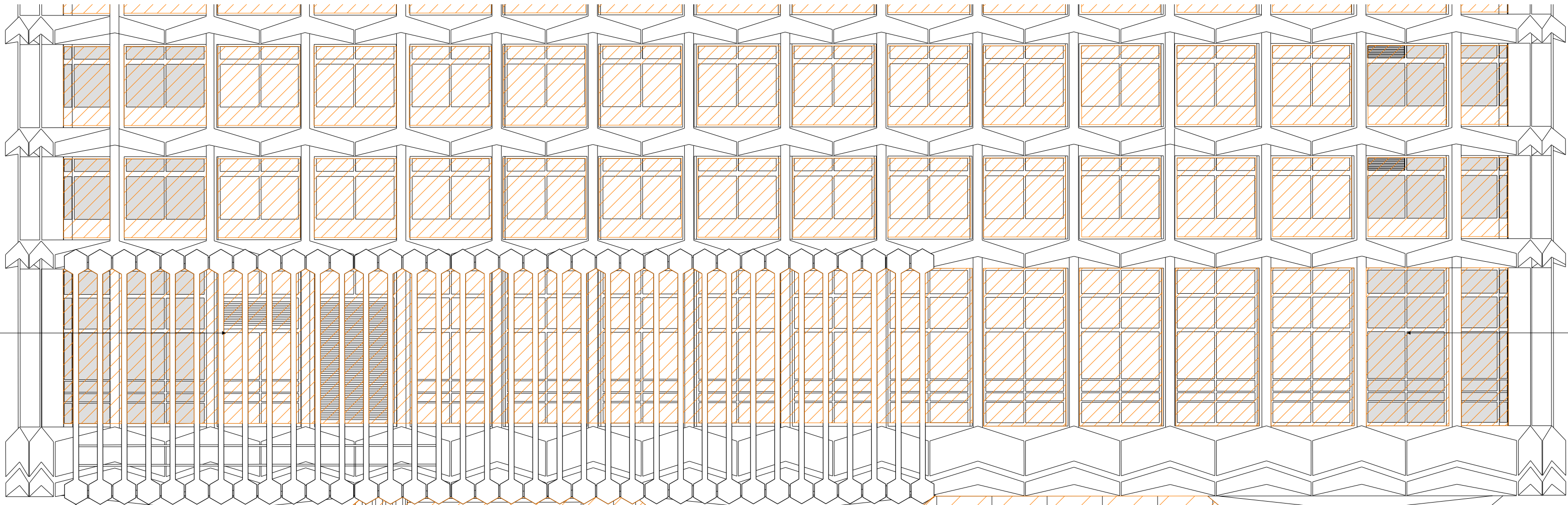
THIRD FLOOR

SECOND FLOOR

FIRST FLOOR
FFL +33.150m
▽

MEZZANINE FLOOR
FFL +28.570m
▽

GROUND FLOOR
FFL +25.710m
▽



Remove louvres as part of
fenestration removal

All windows to be removed in
preparation for replacement.

Remove external staircase in preparation for
relocation internally.

Remove all existing fenestration
and glazing.

Remove all existing fenestration
and glazing.

Remove existing non-original entrance
canopy and revolving door.

NEW OXFORD STREET

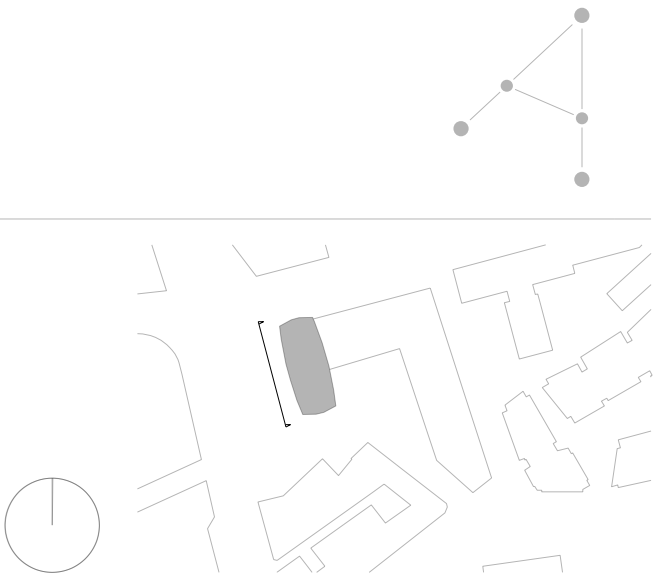
ANDREW BORDE STREET

2 EXISTING ELEVATION WEST DEMOLITIONS 1:100
LOWER LEVELS

REVISIONS

| REV | DATE | DESCRIPTION |
|-----|----------|----------------|
| PL1 | 01.04.13 | PLANNING ISSUE |

KEY PLAN



STATUS

PLANNING

CONRAN+
PARTNERS

Architects Designers
22 Shad Thames London SE1 2YU
T: 020 7403 8899
cp@conran.com www.conranandpartners.com

Centre Point
101-103 New Oxford Street
London, WC1A 1DD

DEMOLITION ELEVATIONS - WEST

CENTRE POINT TOWER

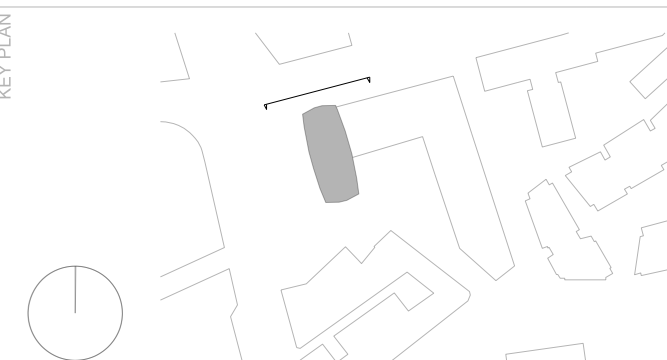
| DRAWN | NT | JOB # | 552 | DRG # | 19253-CPT | REV | PL1 |
|---------|----------|-----------|----------|-------|-----------|------|----------|
| CHECKED | NE | SCALE @A1 | 1:100 | SIZE | A1 | DATE | APR 13 |
| DATE | 01.04.13 | DATE | 01.04.13 | DATE | 01.04.13 | DATE | 01.04.13 |

NOTES
DO NOT SCALE FROM THIS DRAWING.
CONTRACTOR TO CHECK ALL DIMENSIONS ON SITE.
ANY DISCREPANCIES TO BE REPORTED TO THE ARCHITECT
IMMEDIATELY.
COPYRIGHT CONRAN AND PARTNERS LIMITED ©

| | | |
|----------|---------------------|--|
| AREA KEY | RESIDENTIAL | |
| | RETAIL | |
| | PLANT | |
| | CIRCULATION | |
| | CAR PARK | |
| | BACK OF HOUSE | |
| KEY | OFFICE | |
| | RESIDENTIAL AMENITY | |
| | DEMOLITION | |
| | EXISTING STRUCTURE | |
| | PARTITION | |
| | PROPOSED STRUCTURE | |

Survey Information Prepared by Plowman Craven.
Original Drawing:
25411E-01C-Elevations

| | | | |
|-----------|-----|----------|----------------|
| REVISIONS | PL1 | 01.04.13 | PLANNING ISSUE |
| | REV | DATE | DESCRIPTION |



PLANNING

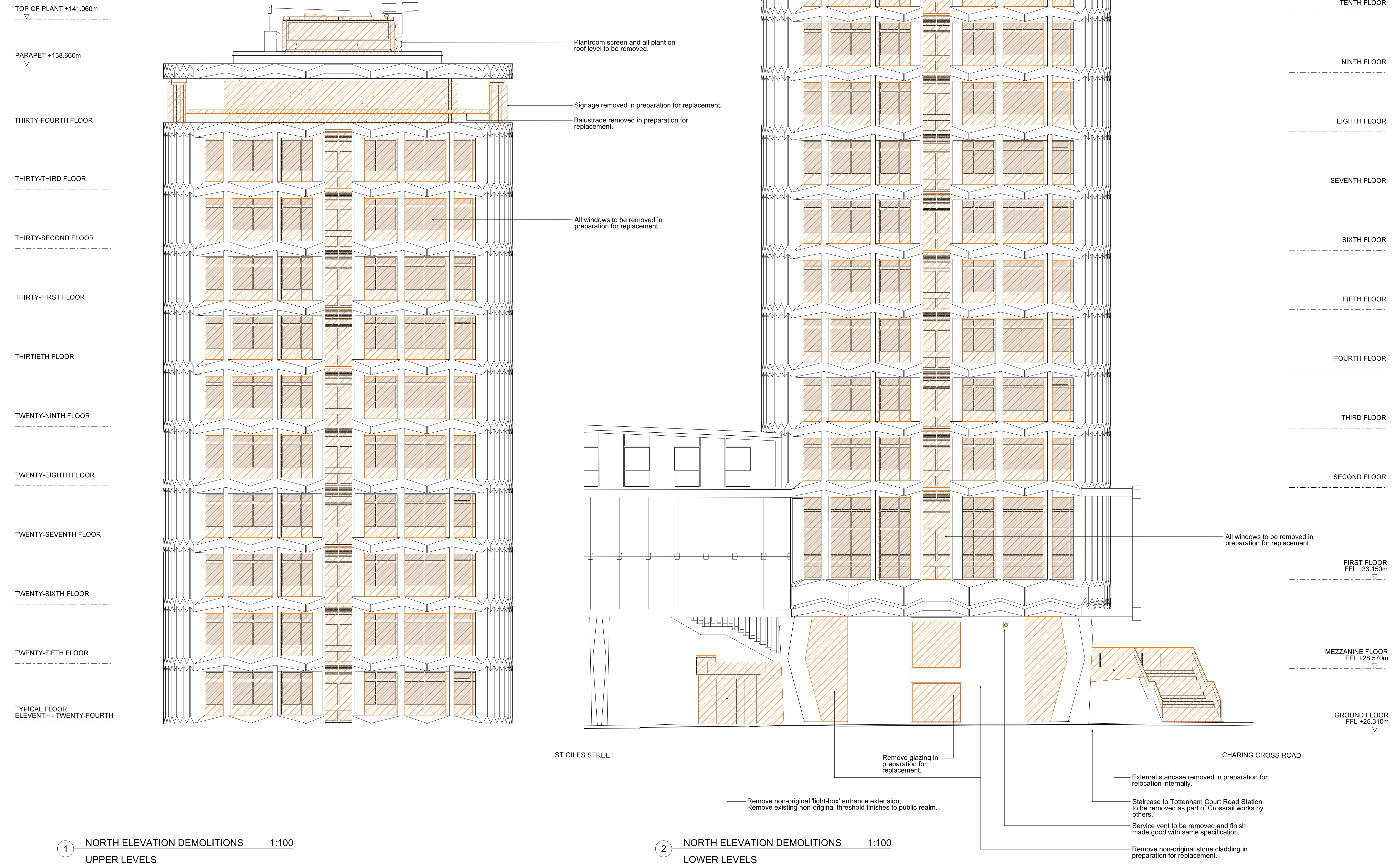
CONRAN+ PARTNERS
Architects Designers
22 Shad Thames London SE1 2YU
T: 020 7403 8899
cp@conran.com www.conranandpartners.com

Centre Point
101-103 New Oxford Street
London, WC1A 1DD

TITLE
DEMOLITION ELEVATIONS - NORTH

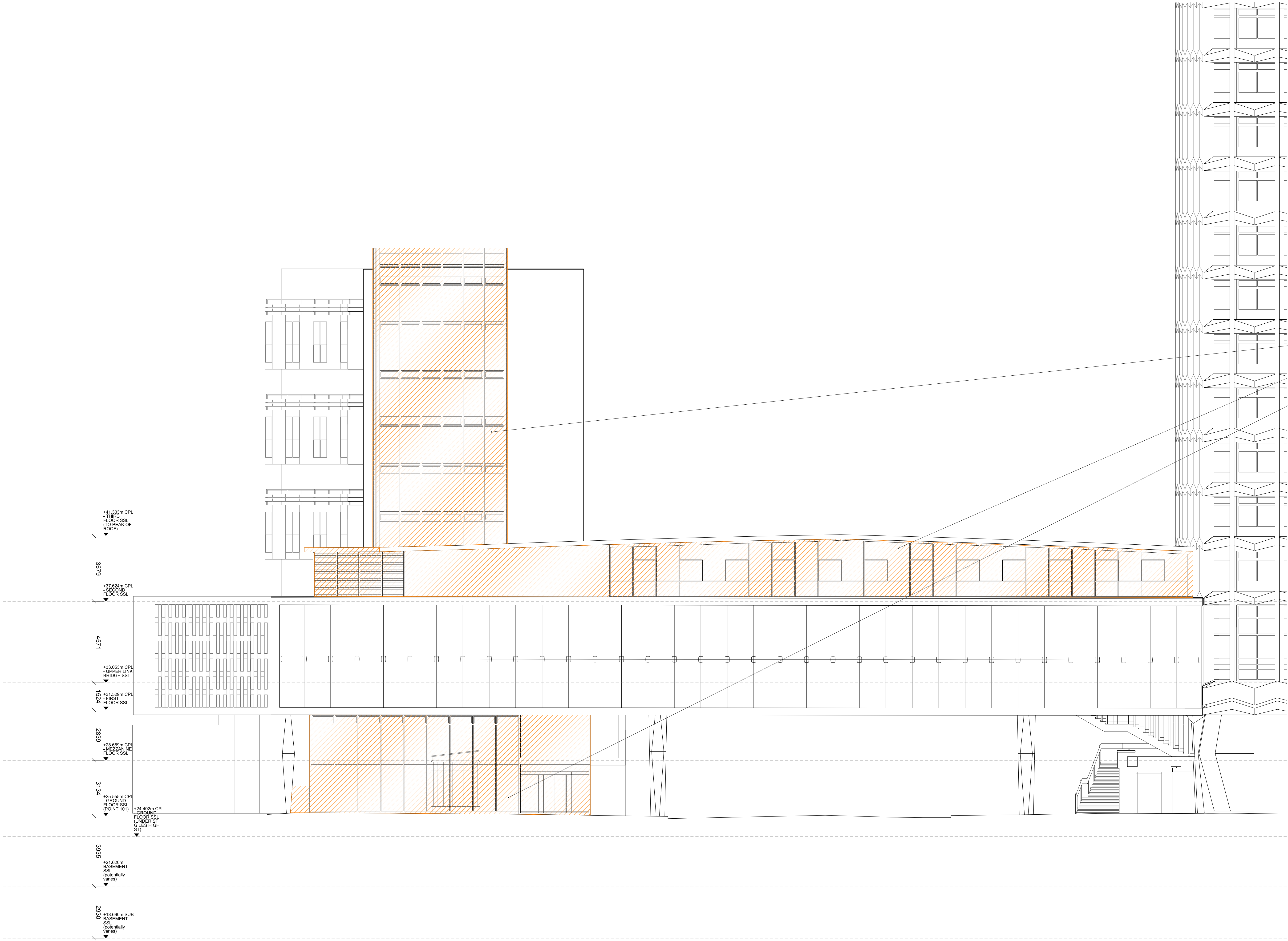
CENTRE POINT TOWER

| | | | | | | | |
|---------|----|------------|-------|-------|-----------|----------|----------|
| DRAWN | NT | JOB # | 552 | DRG # | 19254-CPT | REV | PL1 |
| CHECKED | NE | SCALE @ A1 | 1:100 | SIZE | A1 | REV DATE | APR 13 |
| | | | | | | | 01.04.13 |



1 NORTH ELEVATION DEMOLITIONS 1:100
UPPER LEVELS

2 NORTH ELEVATION DEMOLITIONS 1:100
LOWER LEVELS



NOTES

DO NOT SCALE FROM THIS DRAWING.
CONTRACTOR TO CHECK ALL DIMENSIONS ON SITE.
ANY DISCREPANCIES TO BE REPORTED TO THE ARCHITECT IMMEDIATELY.

THE SURVEY INFORMATION CONTAINED IN THIS DRAWING WAS PROVIDED BY PLOWMAN CRAVEN SURVEY DRAWINGS DEC 2011 - OCT 2012.

COPYRIGHT RICK MATHER ARCHITECTS LLP ©

KEY

DEMOLITION

EXISTING STRUCTURE

PARTITION

PROPOSED STRUCTURE

Stair core glazing and frames removed

Glazed wall and spandrels removed

Shop front glazing removed

REVISIONS

| PL | 01.04.13 | PLANNING ISSUE |
|-----|----------|----------------|
| REV | DATE | DESCRIPTION |
| | | |

KEY PLAN

STATUS

PLANNING

RICK MATHER ARCHITECTS ©

123 Camden High Street London NW1 7JR
T: 020 7284 1727 F: 020 7287 7826
info@rickmather.com www.rickmather.com

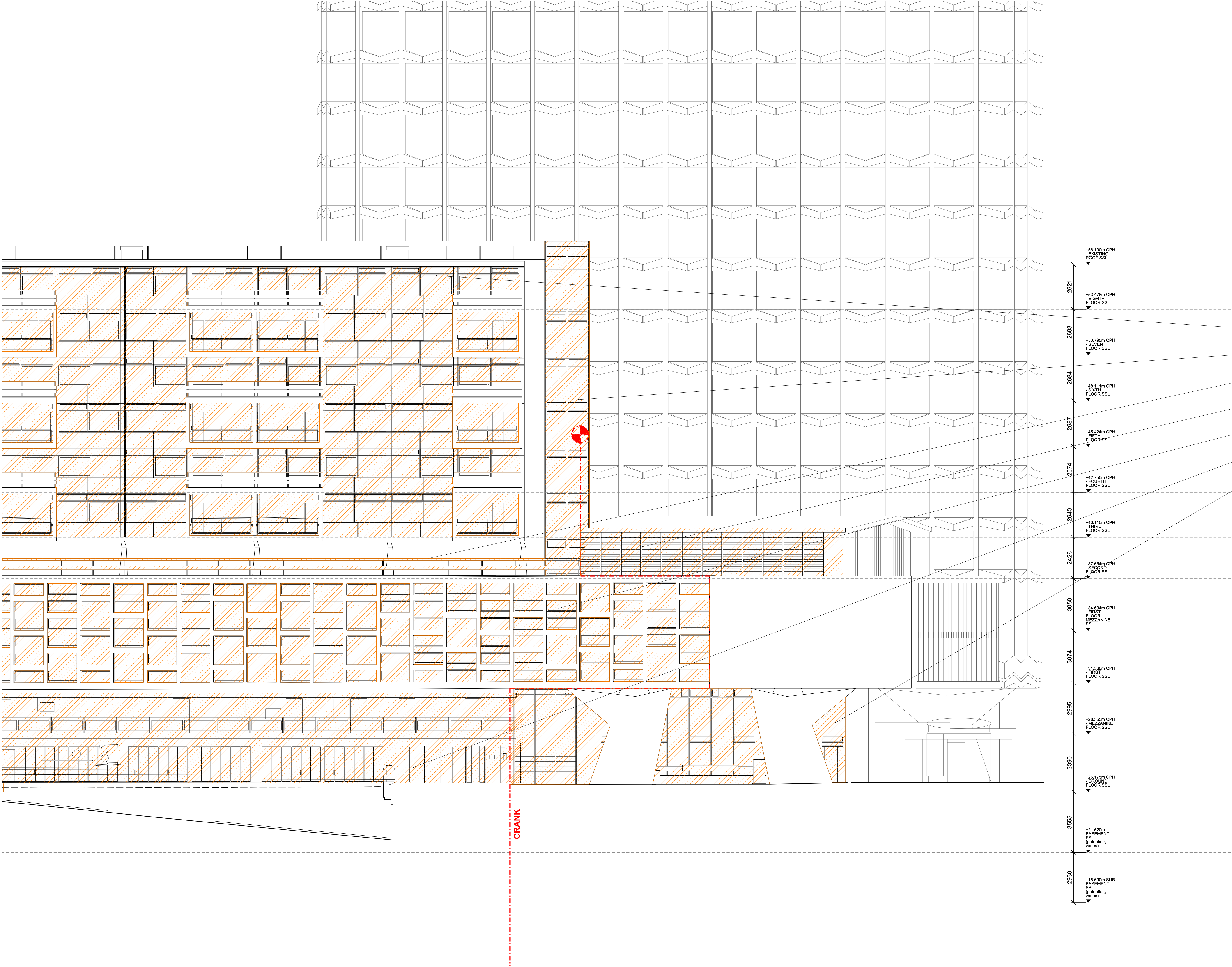
JOB

Centre Point
101-103 New Oxford Street
London, WC1A 1DD

TITLE

EXISTING ELEVATION - SHOWING DEMOLITIONS
NORTH (NEW OXFORD STREET) ELEVATION
CENTRE POINT LINK + HOUSE

| | | | | | | | |
|---------|------|----------|-------|-------|-----------|----------|----------|
| DRAWN | DMcC | JOB # | 552 | DRG # | 19255-CPA | REV | PL1 |
| CHECKED | GM | SCALE@A1 | 1:100 | SIZE | A1 | DATE | APR 13 |
| | | | | | | REV DATE | 01.04.13 |



NOTES

DO NOT SCALE FROM THIS DRAWING.
CONTRACTOR TO CHECK ALL DIMENSIONS ON SITE.
ANY DISCREPANCIES TO BE REPORTED TO THE ARCHITECT IMMEDIATELY.

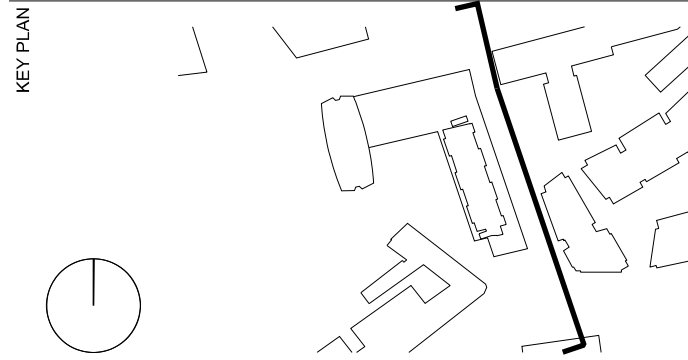
THE SURVEY INFORMATION CONTAINED IN THIS DRAWING WAS PROVIDED BY PLOWMAN CRAVEN SURVEY DRAWINGS DEC 2011 - OCT 2012.

COPYRIGHT RICK MATHER ARCHITECTS LLP ©

| KEY | | |
|-----|--------------------|--|
| | DEMOLITION | |
| | EXISTING STRUCTURE | |
| | PARTITION | |
| | PROPOSED STRUCTURE | |

- Curtain glazing removed
- Stair core glazing and frame removed
- Balustrade removed
- Louvréd wall to plant enclosure removed
- Glazing and spandrel panels behind brise soleil removed
- Non load bearing wall to ramp removed
- shop front glazing removed

| REVISIONS | | | |
|-----------|----------|----------------|--|
| PL1 | 01.04.13 | PLANNING ISSUE | |
| REV | DATE | DESCRIPTION | |



STATUS

PLANNING

RICK MATHER ARCHITECTS ©

123 Camden High Street London NW1 7JR
T: 020 7284 1727 F: 020 7287 7826
info@rickmather.com www.rickmather.com

JOB

Centre Point
101-103 New Oxford Street
London, WC1A 1DD

TITLE

EXISTING ELEVATION - SHOWING DEMOLITIONS
EAST (EARNSHAW STREET) ELEVATION - 1
CENTRE POINT LINK + HOUSE

| | | | | | | | |
|---------|------|----------|------------|----------|------------------|------|------------|
| DRAWN | DMcC | JOB # | 552 | DRG # | 19256-CPA | REV | PL1 |
| CHECKED | GM | SCALE@A1 | 1:100 | SIZE | A1 | DATE | APR 13 |
| | | | | REV/DATE | | | 01.04.13 |

NOTES

DO NOT SCALE FROM THIS DRAWING.
CONTRACTOR TO CHECK ALL DIMENSIONS ON SITE.
ANY DISCREPANCIES TO BE REPORTED TO THE ARCHITECT IMMEDIATELY.

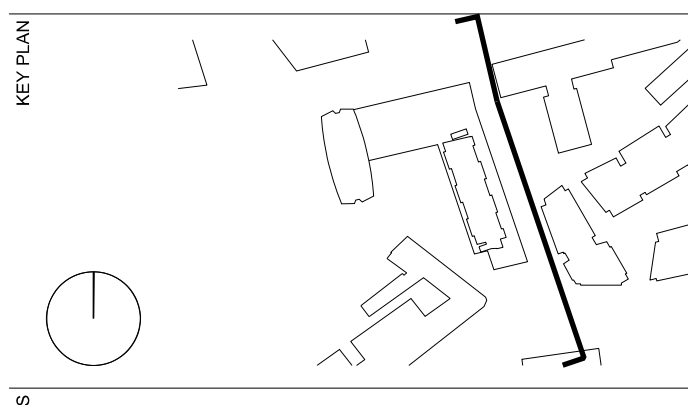
THE SURVEY INFORMATION CONTAINED IN THIS DRAWING WAS PROVIDED BY PLOWMAN CRAVEN SURVEY DRAWINGS DEC 2011 - OCT 2012.

COPYRIGHT RICK MATHER ARCHITECTS LLP ©

| KEY | | |
|-----|--------------------|--|
| | DEMOLITION | |
| | EXISTING STRUCTURE | |
| | PARTITION | |
| | PROPOSED STRUCTURE | |

- Curtain glazing removed
- Balustrade removed
- Glazing and spandrel panels behind brise soliel removed
- Non load bearing wall to ramp removed

| REVISIONS | | | |
|-----------|----------|----------------|--|
| PL1 | 01.04.13 | PLANNING ISSUE | |
| REV | DATE | DESCRIPTION | |



PLANNING

RICK MATHER ARCHITECTS ©

123 Camden High Street London NW1 7JR
T: 020 7284 1727 F: 020 7287 7826
info@rickmather.com www.rickmather.com

JOB

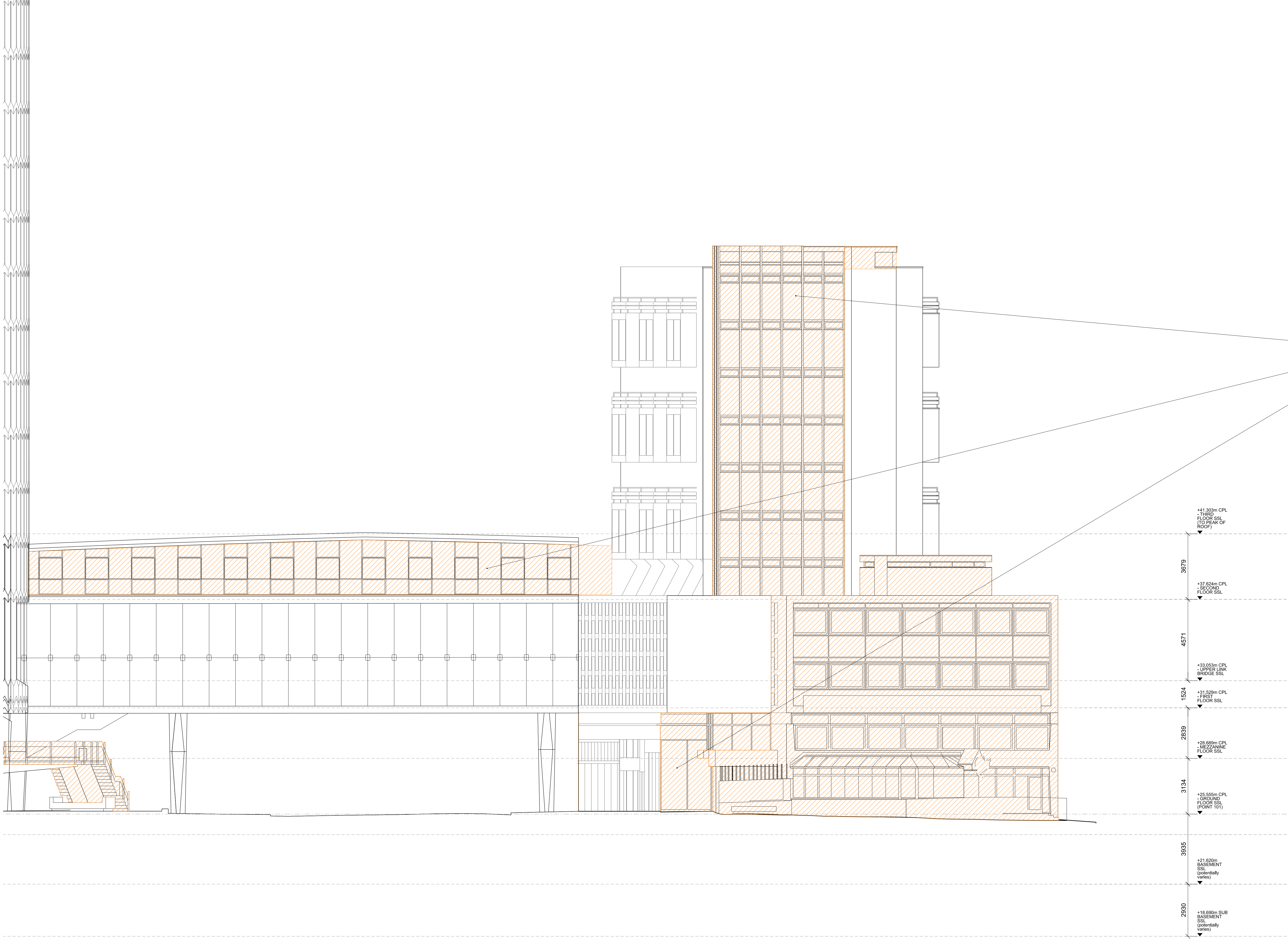
Centre Point
101-103 New Oxford Street
London, WC1A 1DD

TITLE

EXISTING ELEVATION - SHOWING DEMONLITIONS
EAST (EARNSHAW STREET) ELEVATION - 2
CENTRE POINT HOUSE

| | | | | | | | |
|---------|------|----------|------------|-------|------------------|----------|------------|
| DRAWN | DMcC | JOB # | 552 | DRG # | 19257-CPA | REV | PL1 |
| CHECKED | GM | SCALE@A1 | 1:100 | SIZE | A1 | DATE | APR 13 |
| | | | | | | REV DATE | 01.04.13 |

- +56.100m CPH
- EXISTING
ROOF SSL
- +53.478m CPH
- EIGHTH
FLOOR SSL
- +50.795m CPH
- SEVENTH
FLOOR SSL
- +48.111m CPH
- SIXTH
FLOOR SSL
- +45.494m CPH
- FIFTH
FLOOR SSL
- +42.750m CPH
- FOURTH
FLOOR SSL
- +40.110m CPH
- THIRD
FLOOR SSL
- +37.684m CPH
- SECOND
FLOOR SSL
- +34.634m CPH
- FIRST
FLOOR
MEZZANINE
SSL
- +31.560m CPH
- FIRST
FLOOR SSL
- +28.565m CPH
- MEZZANINE
FLOOR SSL
- +25.175m CPH
- GROUND
FLOOR SSL
- +21.620m
BASEMENT
SSL
(potentially
varies)
- +18.690m SUB
BASEMENT
SSL
(potentially
varies)



NOTES

DO NOT SCALE FROM THIS DRAWING.
CONTRACTOR TO CHECK ALL DIMENSIONS ON SITE.
ANY DISCREPANCIES TO BE REPORTED TO THE ARCHITECT IMMEDIATELY.

THE SURVEY INFORMATION CONTAINED IN THIS DRAWING WAS PROVIDED BY PLOWMAN CRAVEN SURVEY DRAWINGS DEC 2011 - OCT 2012.

COPYRIGHT RICK MATHER ARCHITECTS LLP ©

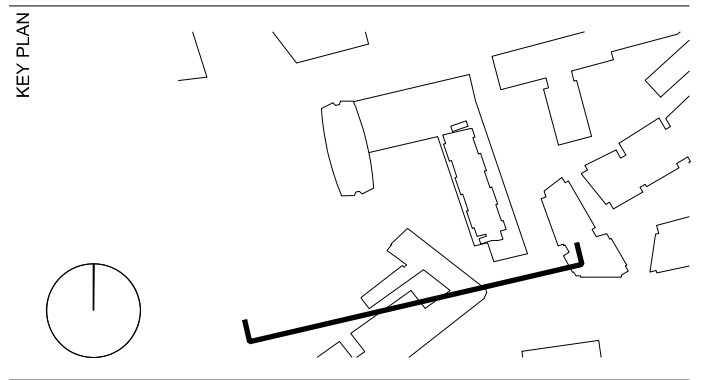
| KEY | | |
|-----|--------------------|--|
| | DEMOLITION | |
| | EXISTING STRUCTURE | |
| | PARTITION | |
| | PROPOSED STRUCTURE | |

Stair glazing and frame removed

Glazed wall and spandrel removed

Shop front glazing removed

| REVISIONS | | | |
|-----------|----------|----------------|--|
| REV | DATE | DESCRIPTION | |
| PL1 | 01.04.13 | PLANNING ISSUE | |

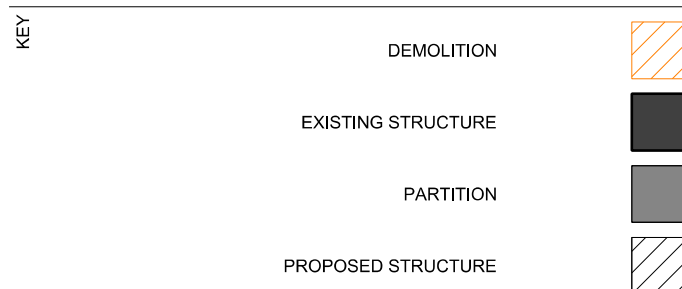


PLANNING

| | | | |
|--|--|----------|----------|
| RICK MATHER ARCHITECTS © | | | |
| 123 Camden High Street London NW1 7JR T: 020 7284 1727 F: 020 7287 7826 info@rickmather.com www.rickmather.com | | | |
| JOB # | Centre Point 101-103 New Oxford Street London, WC1A 1DD | | |
| TITLE | EXISTING ELEVATION - SHOWING DEMOLITIONS SOUTH ELEVATION CENTRE POINT LINK + HOUSE | | |
| DRAWN | DMcC | JOB # | 552 |
| CHECKED | GM | SCALE | A1 |
| | | DATE | APR 13 |
| | | REV | PL1 |
| | | REV DATE | 01.04.13 |

THE SURVEY INFORMATION CONTAINED IN THIS DRAWING
WAS PROVIDED BY PLOWMAN CRAVEN SURVEY DRAWINGS
DEC 2011 - OCT 2012.

COPYRIGHT RICK MATHER ARCHITECTS LLP ©



— Stair glazing removed

— Curtain glazing removed

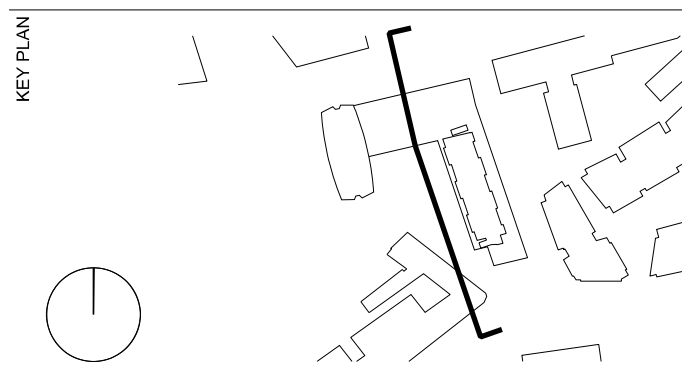
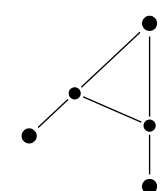
— Balustrade removed

— Retrofitted plant room removed

Glazing and spandrel panels behind brise soleil removed

— Shop front glazing removed

| PL1 | 01.04.13 | PLANNING ISSUE |
|-----|----------|----------------|
| REV | DATE | DESCRIPTION |



STATUS PLANNING

RICK MATHER ARCHITECTS ©

123 Camden High Street London NW1 7JF
T: 020 7284 1727 F: 020 7267 7826
info@rickmather.com www.rickmather.com

Centre Point

EXISTING ELEVATION - SHOWING DEMOLITIONS
WEST ELEVATION - 1
CENTRE POINT HOUSE

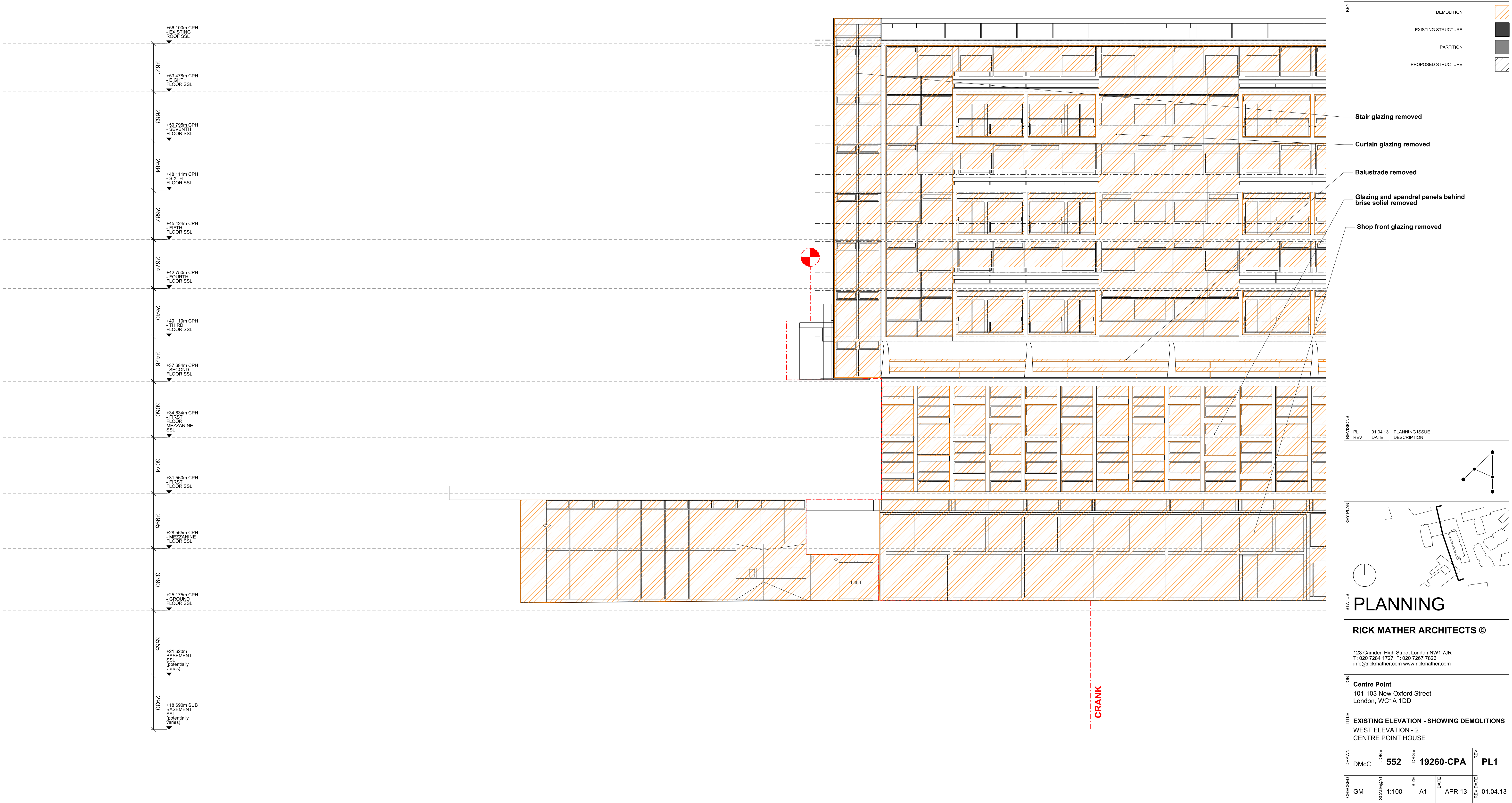
| | | | | | |
|---------|------|---------------------|---------------------------|----------------|----------------------|
| DRAWN | DMcC | JOB # 552 | DRG # 19259-CPA | | REV PL1 |
| CHECKED | GM | SCALE@A1 1:100 | SIZE A1 | DATE APR 13 | REV DATE 01.04.13 |

NOTES

DO NOT SCALE FROM THIS DRAWING.
CONTRACTOR TO CHECK ALL DIMENSIONS ON SITE.
ANY DISCREPANCIES TO BE REPORTED TO THE ARCHITECT IMMEDIATELY.

THE SURVEY INFORMATION CONTAINED IN THIS DRAWING WAS PROVIDED BY PLOWMAN CRAVEN SURVEY DRAWINGS DEC 2011 - OCT 2012.

COPYRIGHT RICK MATHER ARCHITECTS LLP ©



THE SURVEY INFORMATION CONTAINED IN THIS DRAWING
WAS PROVIDED BY PLOWMAN CRAVEN SURVEY DRAWINGS
DEC 2011 - OCT 2012.

STATUS PLANNING

123 Camden High Street London NW1 7JF
T: 020 7284 1727 F: 020 7267 7826
info@rickmather.com www.rickmather.com

Centre Point
101-103 New Oxford Street
London, WC1A 1DD

| | |
|-------|---|
| TITLE | SECTION KEY PLAN FOR DEMOLITION DRAWINGS |
| | 1:100 SET - EXISTING |
| | AMALGAMATED DRAWINGS |

| | | | | | |
|---------|------|---------------------|---------------------------|----------------|----------------------|
| DRAWN | DMcC | JOB # 552 | DRG # 19261-CPA | | REV PL1 |
| CHECKED | GM | SCALE@A1 1:250 | SIZE A1 | DATE APR 13 | REV/DATE 01.04.13 |

TOP OF PLANT +141.060m

PARAPET +138.660m

THIRTY-FOURTH FLOOR

THIRTY-THIRD FLOOR

THIRTY-SECOND FLOOR

THIRTY-FIRST FLOOR

Remove signage in preparation for replacement.

Remove plant screen.
Remove existing terrace floor finishes.

Remove windows in preparation for replacement.

Remove windows in preparation for replacement.
Remove upstand and heater to rear of spandrel panel at all levels.

Remove existing plant and plant screen.

Remove existing roof finishes.

Remove signage in preparation for replacement.

Remove plant screen.

Remove existing terrace floor finishes.

Remove existing plant and plant room floor. Structural alterations to be made to existing plant room wall.

Existing concrete upstand behind spandrel panel to be demolished throughout 33rd Floor

Remove windows in preparation for replacement.

Remove all existing linings to walls, columns and ceilings.

Remove all existing linings to walls, columns and ceilings.

Remove all windows in preparation for replacement.

Remove existing floor finishes.

Remove upstand and heater to rear of spandrel panel at all levels.

3 SECTION AA DEMOLITION 1:100
UPPER LEVELS

Remove windows in preparation for replacement.

Remove upstand to rear of spandrel.

Remove windows in preparation for replacement.

Remove all existing linings to walls, columns and ceilings.

Remove existing floor finishes.

Remove upstand to rear of spandrel panel.

2 SECTION AA DEMOLITION 1:100
TYPICAL LEVELS

THIRD FLOOR

SECOND FLOOR

FIRST FLOOR
FFL +33.150m

MEZZANINE FLOOR
FFL +28.570m

GROUND FLOOR
FFL +25.310m

Remove all windows in preparation for replacement.

Remove upstand to rear of spandrel.

Remove windows in preparation for replacement.

Remove all existing fenestration and glazing.

Remove all existing fascia and balustrade to mezzanine in preparation for replacement.

Remove external staircase in preparation for relocation internally.

Remove non-original plinths.

Remove all non-original floor finishes.

Remove non- original plinth around base of column.

Remove all windows in preparation for replacement.

Remove all existing linings to walls, columns and ceilings.

Remove existing floor finishes.

Remove upstand to rear of spandrel panel.

Remove all existing linings to walls, columns and ceilings.

Remove existing floor finishes.

Remove all existing ceiling finishes.

Remove all existing fascia and balustrade to mezzanine.

Remove all existing non-original ceiling finishes.

Remove all existing fenestration and glazing.

Remove existing external staircase in preparation for relocation internally.

Excavate level change to match proposed internal levels.

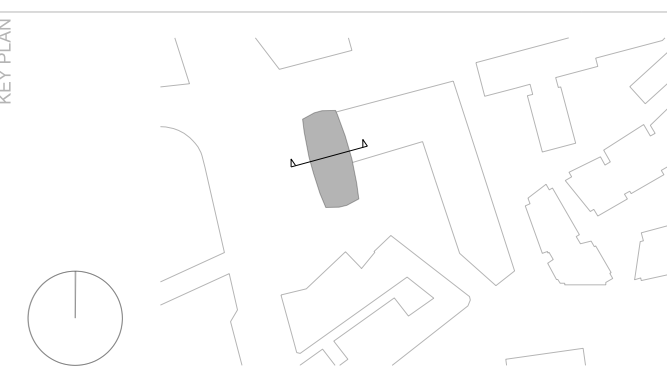
1 SECTION AA DEMOLITION 1:100
LOWER LEVELS

NOTES
DO NOT SCALE FROM THIS DRAWING.
CONTRACTOR TO CHECK ALL DIMENSIONS ON SITE.
ANY DISCREPANCIES TO BE REPORTED TO THE ARCHITECT IMMEDIATELY.
COPYRIGHT CONRAN AND PARTNERS LIMITED ©

| AREA KEY | RESIDENTIAL | |
|----------|---------------------|------------|
| | RETAIL | PLANT |
| KEY | CIRCULATION | CAR PARK |
| | BACK OF HOUSE | OFFICE |
| | RESIDENTIAL AMENITY | DEMOLITION |
| | EXISTING STRUCTURE | PARTITION |
| | PROPOSED STRUCTURE | |

Survey Information Prepared by Plowman Craven.
Original Drawing:
25411E-01C-Elevations

| REVISIONS | PL1 | 01.04.13 | PLANNING ISSUE |
|-----------|-----|----------|----------------|
| | REV | DATE | DESCRIPTION |



| STATUS | | PLANNING | |
|--|-------|---|----------|
| CONRAN+ PARTNERS | | Architects Designers | |
| 22 Shad Thames London SE1 2YU T: 020 7403 8899 cp@conran.com www.conranandpartners.com | | Centre Point 101-103 New Oxford Street London, WC1A 1DD | |
| TITLE | | DEMOLITION SECTION AA | |
| CENTRE POINT TOWER | | | |
| CHECKED | DRAWN | NT | 552 |
| SCALE @A1 | SIZE | DATE | REV |
| 1:100 | A1 | APR 13 | 01.04.13 |

NOTES

DO NOT SCALE FROM THIS DRAWING.
CONTRACTOR TO CHECK ALL DIMENSIONS ON SITE.
ANY DISCREPANCIES TO BE REPORTED TO THE ARCHITECT IMMEDIATELY.

THE SURVEY INFORMATION CONTAINED IN THIS DRAWING WAS PROVIDED BY PLOWMAN CRAVEN SURVEY DRAWINGS DEC 2011 - OCT 2012.

COPYRIGHT RICK MATHER ARCHITECTS LLP ©

NOTE: Existing granolithic tarmac topping to be scabbled off in both basement levels

| KEY | | |
|-----|--------------------|--|
| | DEMOLITION | |
| | EXISTING STRUCTURE | |
| | PARTITION | |
| | PROPOSED STRUCTURE | |

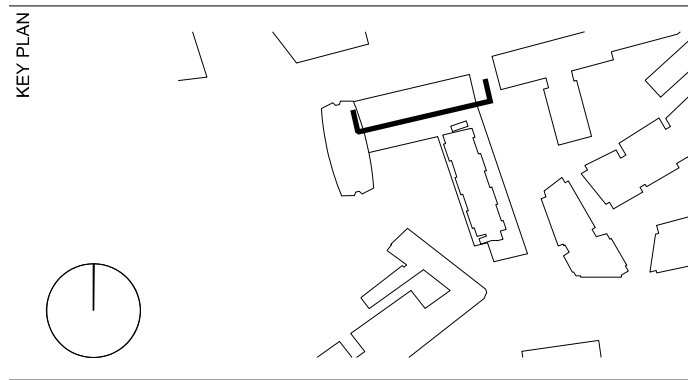
— All internal partitions removed

Suspended ceilings removed

Louvre wall to plant room enclosure removed

Raised floor removed

| REVISIONS | | | |
|-----------|----------|----------------|--|
| REV | DATE | DESCRIPTION | |
| PL1 | 01.04.13 | PLANNING ISSUE | |



PLANNING

| | | | |
|--|--|----------|----------|
| RICK MATHER ARCHITECTS © | | | |
| 123 Camden High Street London NW1 7JR T: 020 7284 1727 F: 020 7287 7826 info@rickmather.com www.rickmather.com | | | |
| JOB # | Centre Point 101-103 New Oxford Street London, WC1A 1DD | | |
| TITLE | EXISTING SECTION - SHOWING DEMOLITIONS SECTION BB CENTRE POINT LINK | | |
| DRAWN | DMcC | JOB # | 552 |
| CHECKED | GM | SCALE | A1 |
| | | SIZE | 1:100 |
| | | DATE | APR 13 |
| | | REV | PL1 |
| | | REV DATE | 01.04.13 |

NOTES

DO NOT SCALE FROM THIS DRAWING.
CONTRACTOR TO CHECK ALL DIMENSIONS ON SITE.
ANY DISCREPANCIES TO BE REPORTED TO THE ARCHITECT IMMEDIATELY.

THE SURVEY INFORMATION CONTAINED IN THIS DRAWING WAS PROVIDED BY PLOWMAN CRAVEN SURVEY DRAWINGS DEC 2011 - OCT 2012.

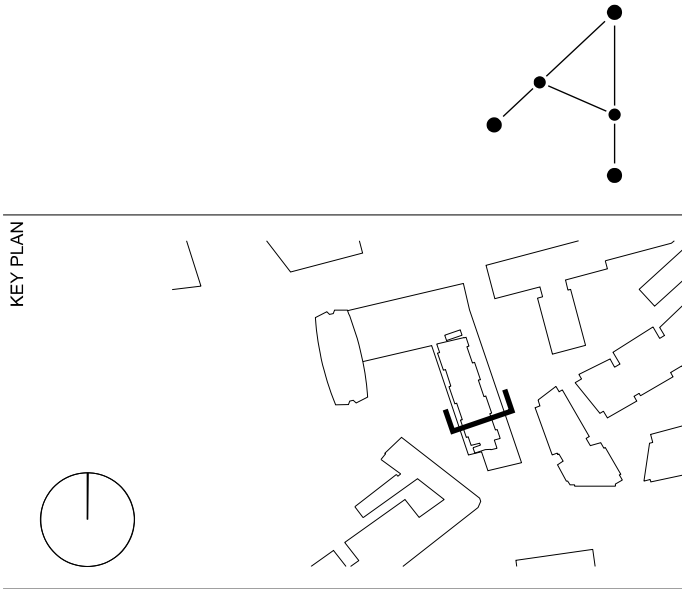
COPYRIGHT RICK MATHER ARCHITECTS LLP ©

NOTE: Existing granolithic tarmac topping to be scabbled off in both basement levels

| KEY | | |
|-----|--------------------|--|
| | DEMOLITION | |
| | EXISTING STRUCTURE | |
| | PARTITION | |
| | PROPOSED STRUCTURE | |

- Curtain glazing removed
- Holes cut in second floor slab to create clerestory
- Suspended ceilings removed
- Glazing behind brise soleil and retrofitted secondary glazing removed
- First mezzanine removed
- Shop front glazing removed
- Ground mezzanine slab removed
- Car ramp to basement removed

| REVISIONS | | | |
|-----------|----------|----------------|--|
| PL1 | 01.04.13 | PLANNING ISSUE | |
| REV | DATE | DESCRIPTION | |



PLANNING

| | | | |
|--|---|---------------------|---------------------------|
| RICK MATHER ARCHITECTS © | | | |
| 123 Camden High Street London NW1 7JR T: 020 7284 1727 F: 020 7287 7826 info@rickmather.com www.rickmather.com | | | |
| JOB | Centre Point 101-103 New Oxford Street London, WC1A 1DD | | |
| TITLE | EXISTING SECTION - SHOWING DEMOLITIONS SECTION CC CENTRE POINT HOUSE | | |
| DRAWN | DMcC | JOB # 552 | DRG # 19264-CPA |
| CHECKED | GM | SCALE@A1 1:100 | SIZE A1 |
| | | DATE APR 13 | REV PL1 |
| | | | REV DATE 01.04.13 |

NOTES

DO NOT SCALE FROM THIS DRAWING.
CONTRACTOR TO CHECK ALL DIMENSIONS ON SITE.
ANY DISCREPANCIES TO BE REPORTED TO THE ARCHITECT IMMEDIATELY.

THE SURVEY INFORMATION CONTAINED IN THIS DRAWING WAS PROVIDED BY PLOWMAN CRAVEN SURVEY DRAWINGS DEC 2011 - OCT 2012.

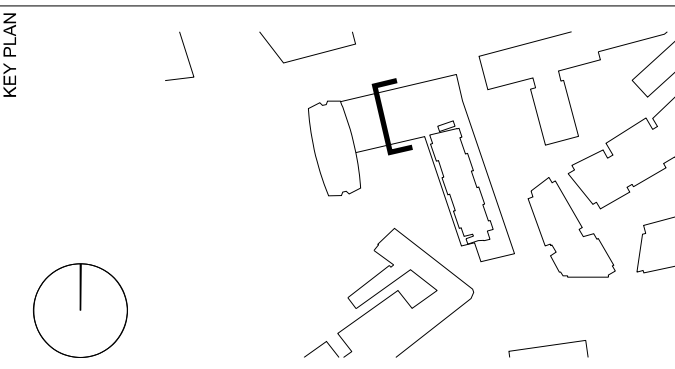
COPYRIGHT RICK MATHER ARCHITECTS LLP ©

NOTE: Existing granolithic tarmac topping to be scabbled off in both basement levels

| KEY | | |
|--------------------|--|--|
| DEMOLITION | | |
| EXISTING STRUCTURE | | |
| PARTITION | | |
| PROPOSED STRUCTURE | | |

- Glazed wall and upstand partition removed
- Suspended ceilings removed
- Raised floor removed
- Shop front glazing removed
- Partitions removed to allow for new brick buildup in sub basement

| REVISIONS | | | |
|-----------|----------|----------------|--|
| REV | DATE | DESCRIPTION | |
| PL1 | 01.04.13 | PLANNING ISSUE | |



STATUS

PLANNING

RICK MATHER ARCHITECTS ©

123 Camden High Street London NW1 7JR
T: 020 7284 1727 F: 020 7287 7826
info@rickmather.com www.rickmather.com

JOB

Centre Point
101-103 New Oxford Street
London, WC1A 1DD

TITLE

EXISTING SECTION - SHOWING DEMOLITIONS
SECTION DD
CENTRE POINT LINK

| | | | | | | | |
|---------|------|----------|------------|----------|------------------|------|------------|
| DRAWN | DMcC | JOB # | 552 | DRG # | 19265-CPA | REV | PL1 |
| CHECKED | GM | SCALE@A1 | 1:100 | SIZE | A1 | DATE | APR 13 |
| | | | | REV/DATE | | | 01.04.13 |

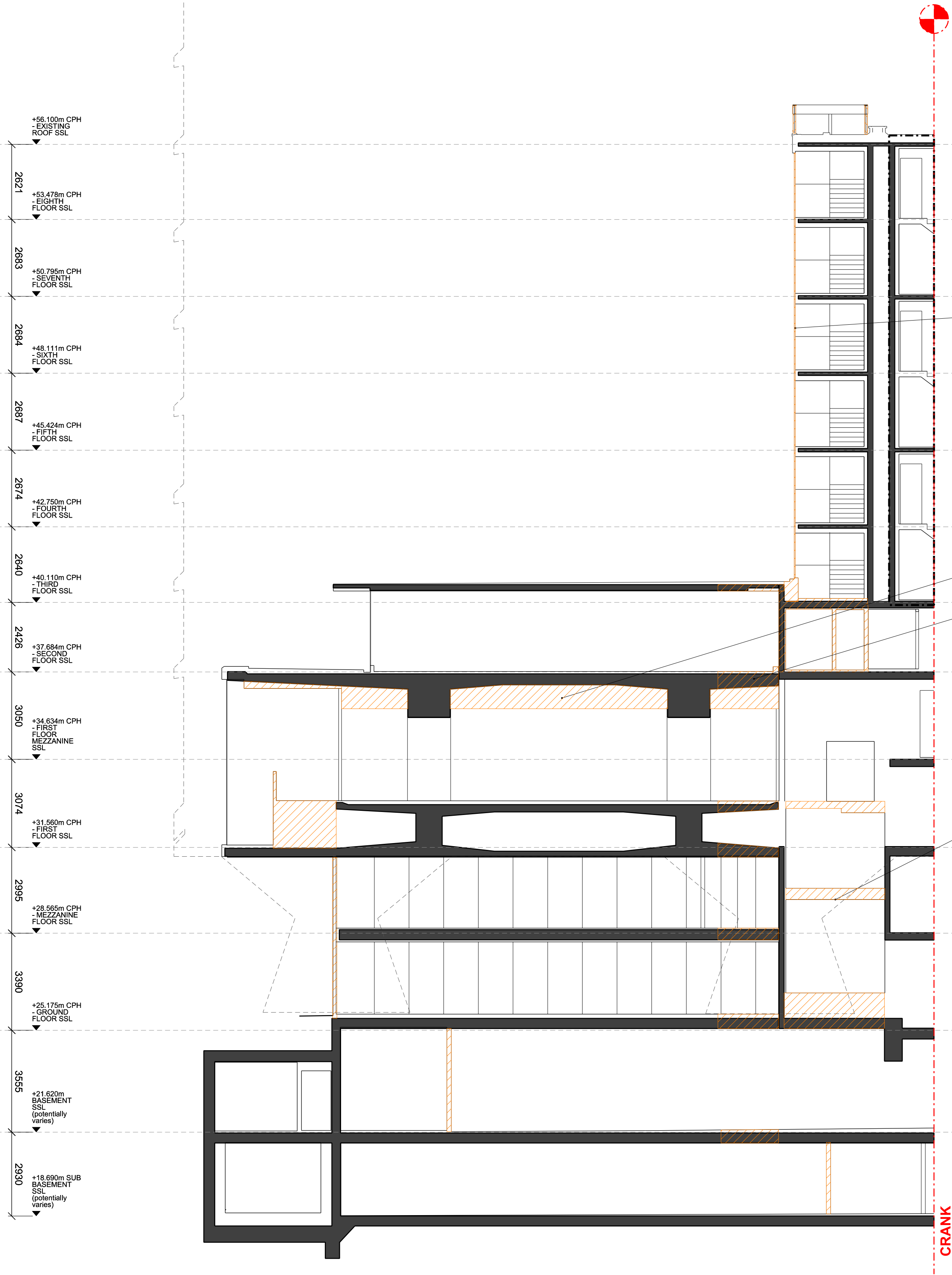
NOTES

DO NOT SCALE FROM THIS DRAWING.
CONTRACTOR TO CHECK ALL DIMENSIONS ON SITE.
ANY DISCREPANCIES TO BE REPORTED TO THE ARCHITECT IMMEDIATELY.

THE SURVEY INFORMATION CONTAINED IN THIS DRAWING WAS PROVIDED BY PLOWMAN CRAVEN SURVEY DRAWINGS DEC 2011 - OCT 2012.

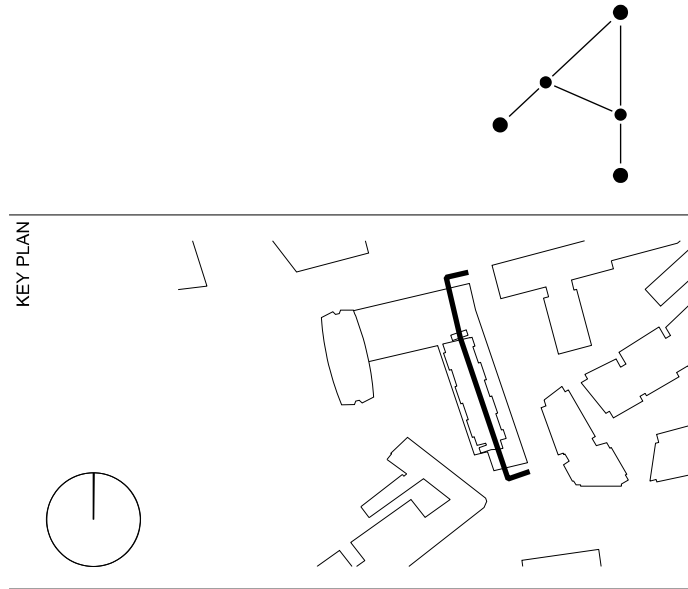
COPYRIGHT RICK MATHER ARCHITECTS LLP ©

NOTE: Existing granolithic tarmac topping to be scabbled off in both basement levels

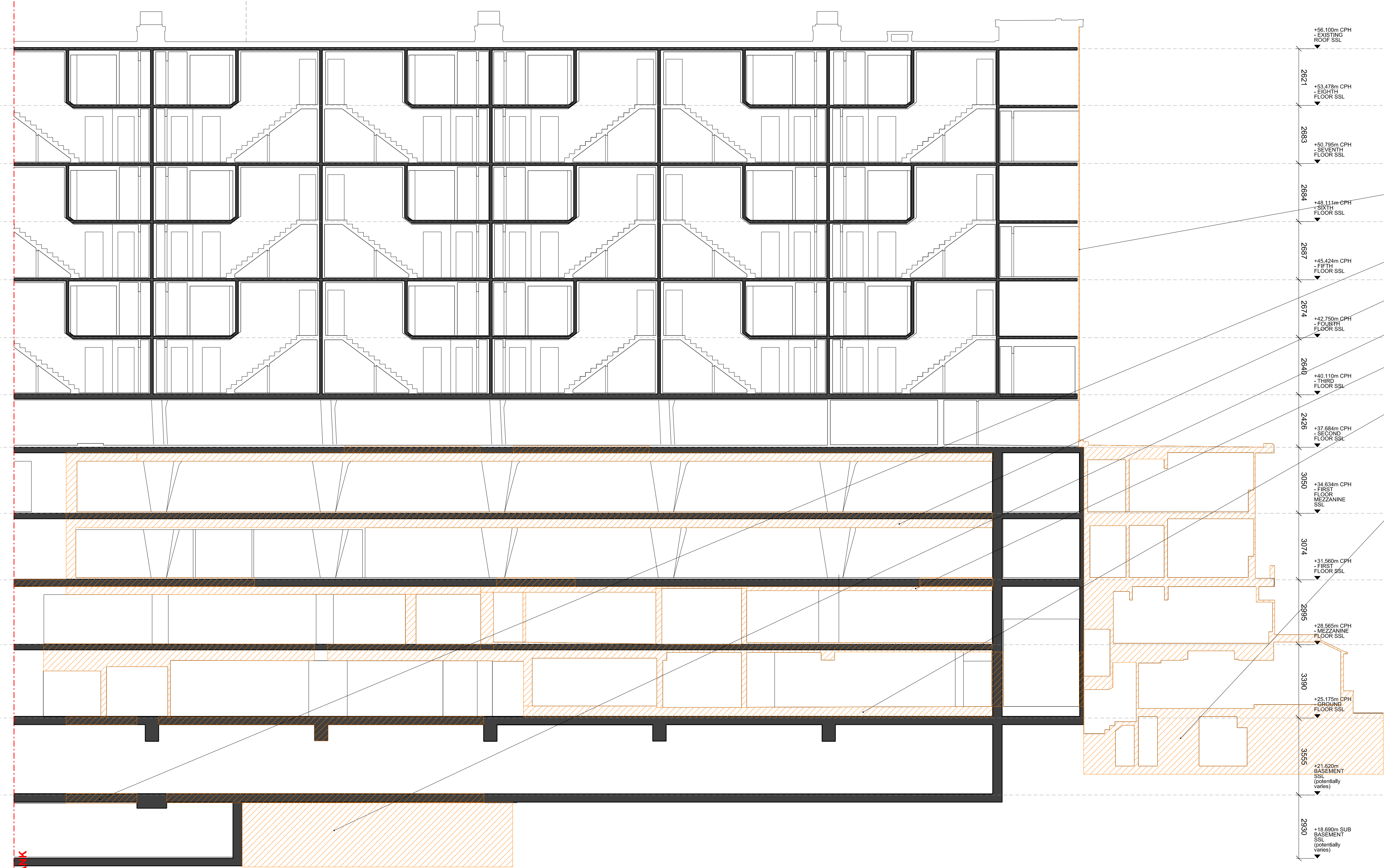


| KEY | | |
|--------------------|--|--|
| DEMOLITION | | |
| EXISTING STRUCTURE | | |
| PARTITION | | |
| PROPOSED STRUCTURE | | |

| REVISIONS | | | |
|-----------|----------|----------------|--|
| PL1 | 01.04.13 | PLANNING ISSUE | |
| REV | DATE | DESCRIPTION | |



| STATUS | | | | | |
|--|-------|-----------|--------|----------|-----|
| PLANNING | | | | | |
| RICK MATHER ARCHITECTS © | | | | | |
| 123 Camden High Street London NW1 7JR T: 020 7284 1727 F: 020 7287 7826 info@rickmather.com www.rickmather.com | | | | | |
| JOB | | | | | |
| Centre Point 101-103 New Oxford Street London, WC1A 1DD | | | | | |
| TITLE | | | | | |
| EXISTING SECTION - SHOWING DEMOLITIONS SECTION EE - 1 CENTRE POINT HOUSE | | | | | |
| DRAWN | JOB # | DRG # | REV | | |
| DMcC | 552 | 19266-CPA | PL1 | | |
| CHECKED | SCALE | SIZE | DATE | REV DATE | REV |
| GM | 1:100 | A1 | APR 13 | 01.04.13 | |



CRACK

NOTES

DO NOT SCALE FROM THIS DRAWING.
CONTRACTOR TO CHECK ALL DIMENSIONS ON SITE.
ANY DISCREPANCIES TO BE REPORTED TO THE ARCHITECT IMMEDIATELY.

THE SURVEY INFORMATION CONTAINED IN THIS DRAWING WAS PROVIDED BY PLOWMAN CRAVEN SURVEY DRAWINGS DEC 2011 - OCT 2012.

COPYRIGHT RICK MATHER ARCHITECTS LLP ©

NOTE: Existing granolithic tarmac topping to be scabbled off in both basement levels

KEY

| | |
|--------------------|--|
| DEMOLITION | |
| EXISTING STRUCTURE | |
| PARTITION | |
| PROPOSED STRUCTURE | |

— All suspended ceilings removed

— Stair core glazing and frames removed

— Proposed lift shaft

— First floor mezzanine slab removed

— Excavation for car lift pits

— Ground floor mezzanine slab removed

— Raised floor removed

— Substation retained beyond

REVISIONS

| PL1 | 01.04.13 | PLANNING ISSUE |
|-----|----------|----------------|
| REV | DATE | DESCRIPTION |
| | | |

KEY PLAN

STATUS

DRAFT

RICK MATHER ARCHITECTS ©

123 Camden High Street London NW1 7JR
T: 020 7284 1727 F: 020 7287 7826
info@rickmather.com www.rickmather.com

JOB

Centre Point
101-103 New Oxford Street
London, WC1A 1DD

TITLE

EXISTING SECTION - SHOWING DEMOLITIONS
SECTION EE - 2
CENTRE POINT HOUSE

| | | | | | | | |
|---------|------|----------|------------|-------|------------------|----------|------------|
| DRAWN | DMcC | JOB # | 552 | DRG # | 19267-CPA | REV | PL1 |
| CHECKED | GM | SCALE@A1 | 1:100 | SIZE | A1 | DATE | APR 13 |
| | | | | | | REV DATE | 01.04.13 |