

JW3 external sign scheme – siteplan



rev	date	by	revisions
-----	------	----	-----------

A	11.04.13	GD	planning application boundary
---	----------	----	-------------------------------



notes

- JCCV site location / planning application boundary
- JCCV ownership

This drawing is the property of Lifschutz Davidson Sandilands Ltd. No disclosure or copy of it may be made without the written permission of Lifschutz Davidson Sandilands Ltd.

key plan



project

A Jewish Community Centre
341-359 Finchley Road &
27 Lymington Road
London NW3 6ET

client

JCC Ventures Ltd

architect

Lifschutz
Davidson
Sandilands
Island Studios
22 St Peter's Square
London W6 9NW
T +44 (0)20 8600 4800
F +44 (0)20 8600 4700
mail@lds-uk.com

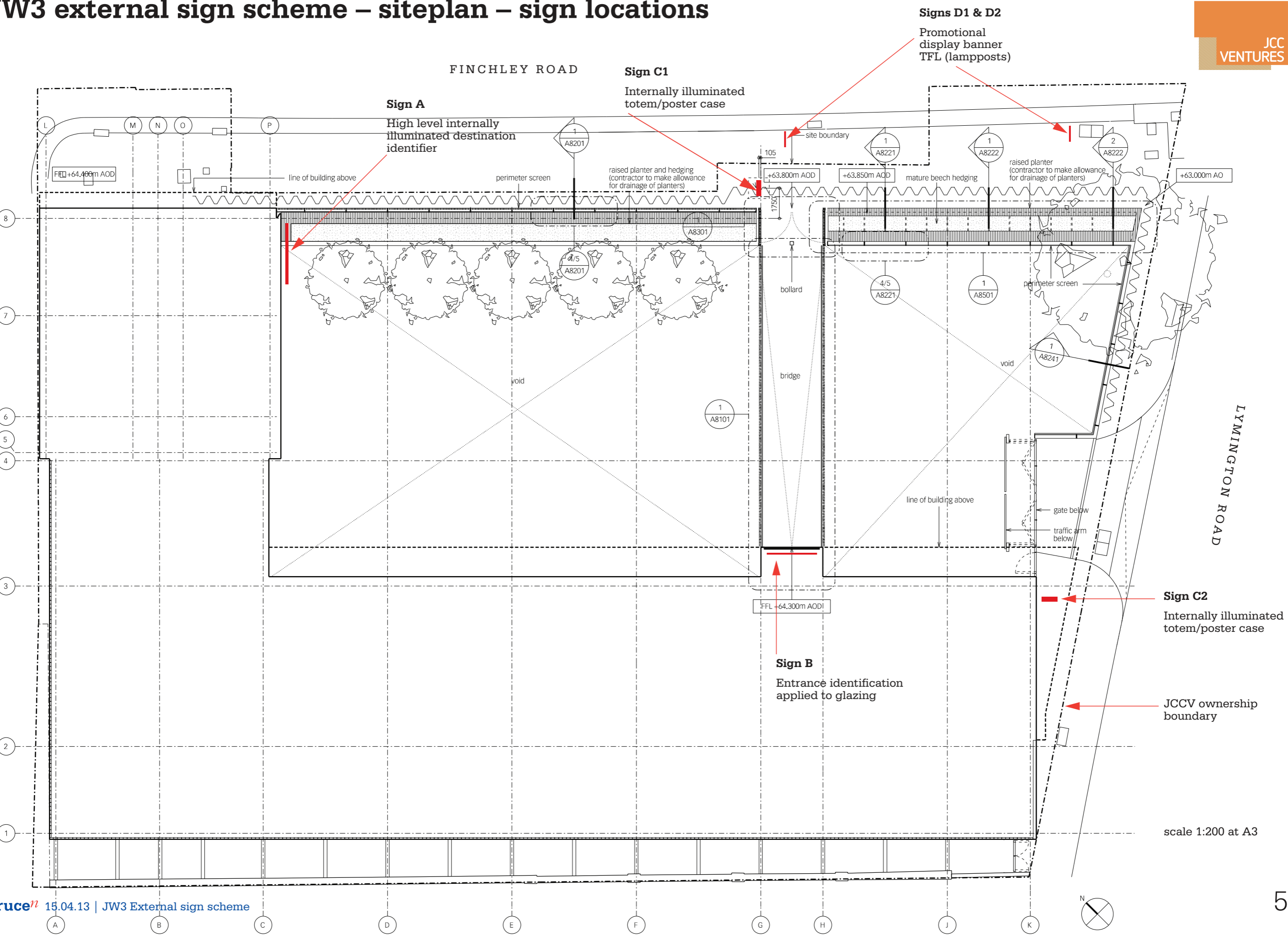
drawing title

JCCV site location and ownership

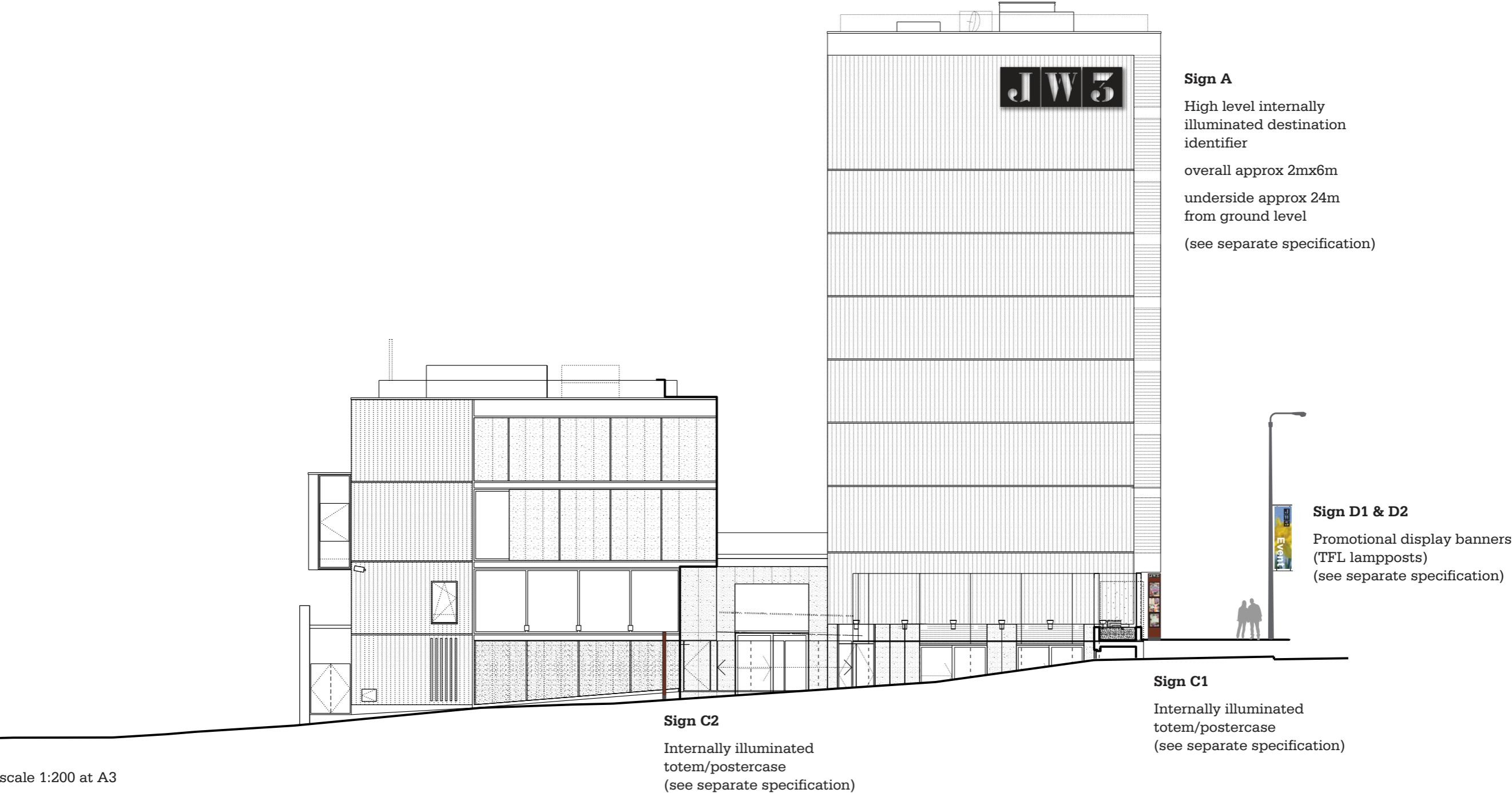
scale at A1	scale at A3	drawn	date
1:250	1:500	EM	04.13

job no.	drawing
0790B	SK320

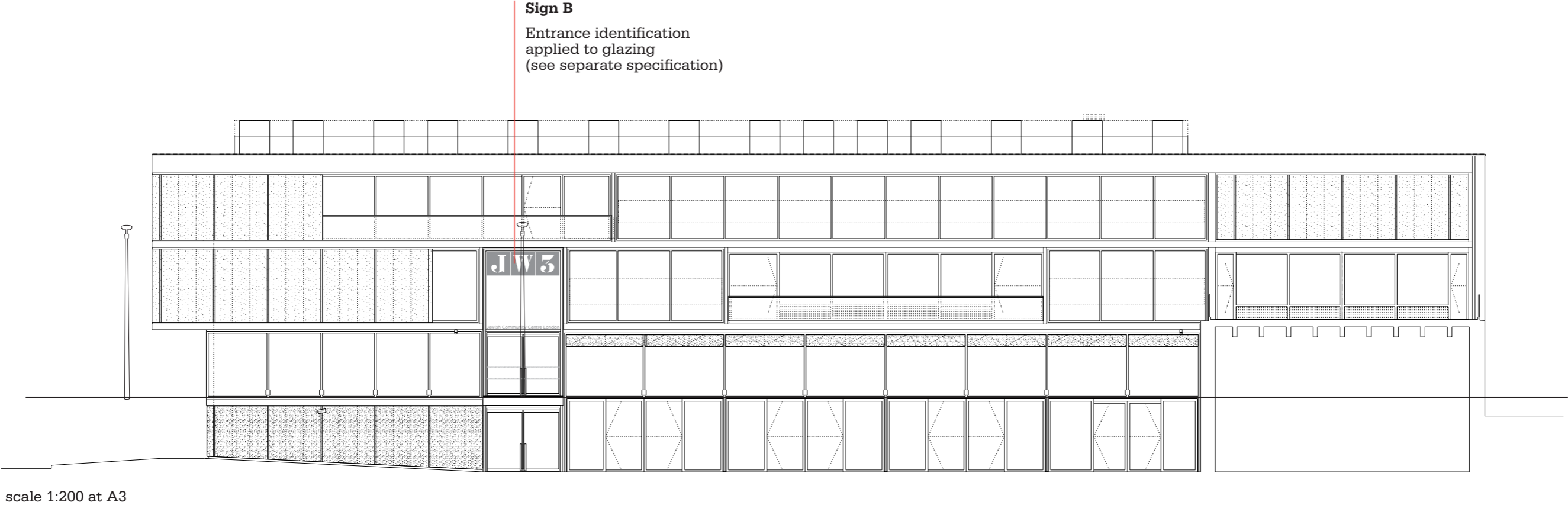
JW3 external sign scheme – siteplan – sign locations



JW3 external sign scheme – south east elevation



JW3 external sign scheme – pavillion – north east elevation



JW3 external sign scheme – sign A – high level destination identifier



Powder-coated/anodised aluminium fabricated construction approx 2m high x 6m wide and 150mm deep.

Aperture cut letterforms reveal building facade behind. Letter height approx 1.45m.

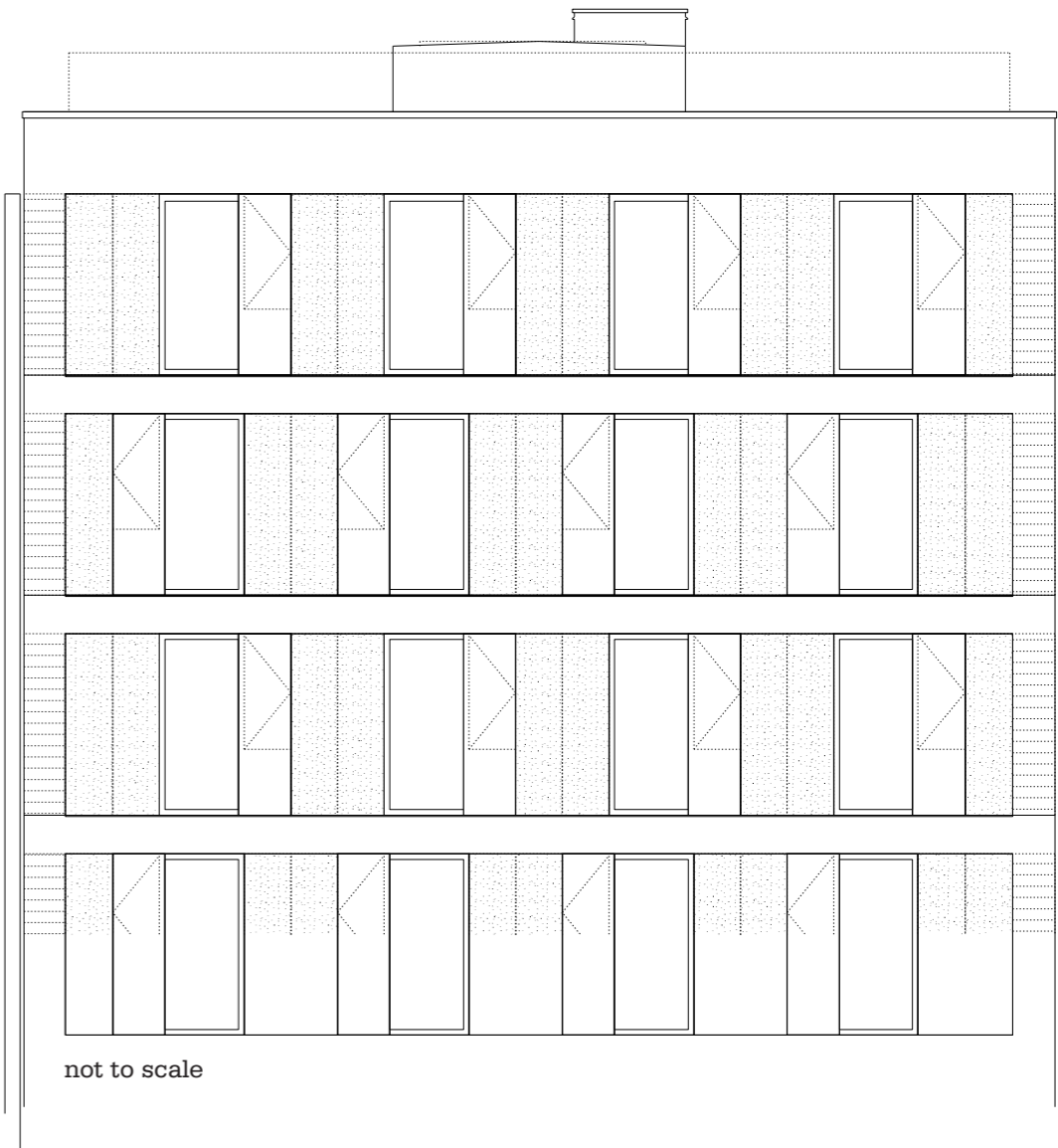
Back tray fixed through precast concrete panel to building facade. Maximum projection from building surface 400mm.

Internally illuminated by white led modules to provide white letters with luminance level not greater than 350–400cd/m2.

not to scale

Location of sign on facade at top of north east elevation.

Maximum projection from precast concrete cladding 400mm.



not to scale

JW3 external sign scheme – sign B – entrance identification



JW3 external sign scheme – signs C1&2 – totem/poster case

pavement-mounted
2-sided totem as
shown on siteplan
within JW3 building
demise

fabricated aluminium
and stainless steel
construction over
structural frame

Anodised/powder
coated bronze finish to
match entrance portico

approx size overall
560mm x 3m x 150mm



internally led
illuminated letters
to form logo

A2 locking and
weatherproof
poster case, 4mm
toughened glass,
with internal
top-lit led
illumination



similar examples located at the
Natural History Museum London

not to scale

JW3 external sign scheme – signs D1&2 – TFL lamppost banners

