

**ALLFORD
HALL
MONAGHAN
MORRIS**

103 Camley Street

Metal Facings

Project Ref. 10019/ Report Ref. REP-16/ April 2013
Planning condition 3b facing materials (partial) Approval Report
Ref. planning permission 2011/5695/P

Executive summary

The following metal facings report forms our formal submission for partial discharge of condition 3b - facing materials for the metal panels only, for the referred Planning Permission - reference 2011/5695/P approved on 30 March 2012.

We have been in discussion with Neil McDonald the principle planning officer & attended site with Kevin Fisher a design advisor who has viewed an initial mock-up on site; as well as the conservation officer, Antonia Powell.

A final mock-up will be available for viewing on site at an agreed date.

Document Control

Job Title:	103 Camley Street
Job number:	10019
Report title:	Metal Facings
Report number:	REP-16
Revision:	-
Date of issue:	25 April 2013
Purpose of issue:	Issued for Approval
Compiled by:	Kate Rayment - AHMM Architects
Reviewed by:	Kevin Hong - AHMM Architects
Date reviewed:	25 April 2013
File name/ location	

Context

At Planning stage, the brick skin revealed a contrasting palette of glazing & metal cladding. Further refinement was added with the use of cast masonry below the windows (in the floor zone) & a coursing of cast masonry expressing the 2-storey module throughout the elevations.



① Aluminium insulated panels with integrated perforations for natural ventilation

②a Smooth cast masonry below the windows

②b Coursing of cast masonry expressing the 2-storey module.

September 2011 - PLANNING

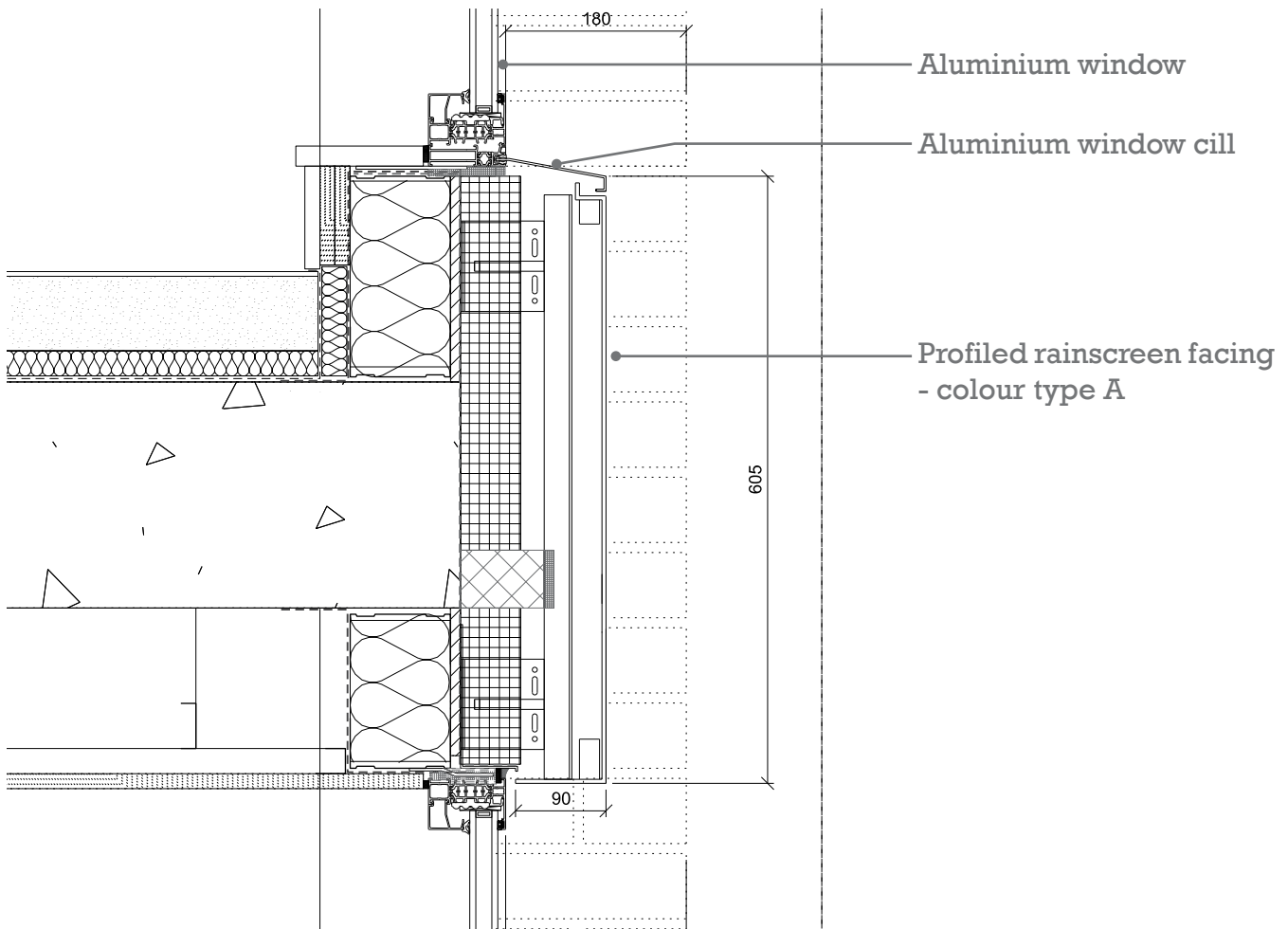
Post Planning Design Development

At detail design stage the use of cast masonry below the windows was tested and in order to reinforce the material palette of glazing & metal it is now proposed that these horizontal elements be constructed in a metal profiled facing.

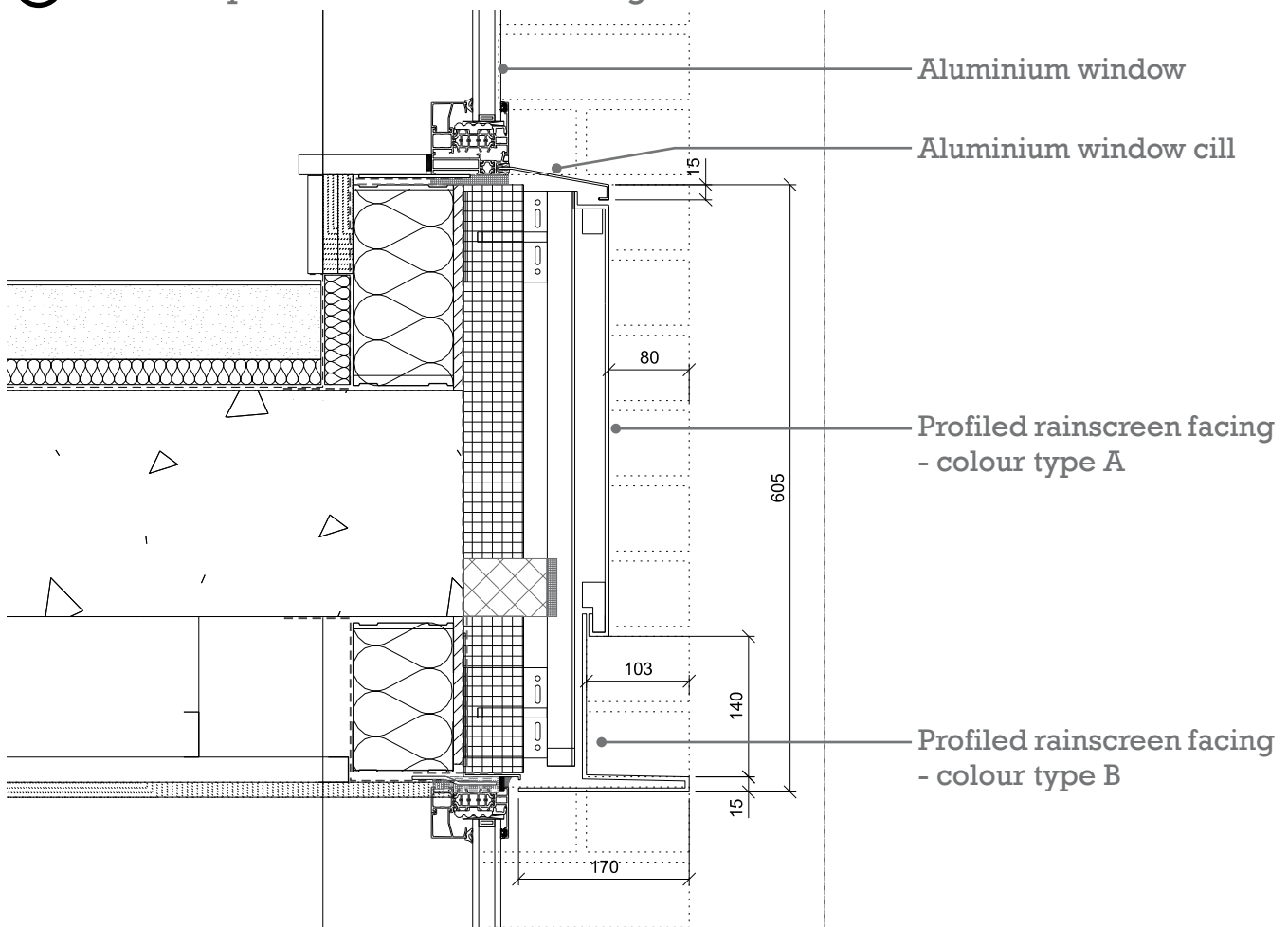


- ① Aluminium insulated panels with integrated perforations for natural ventilation
- ②a Profiled rainscreen facing below windows
- ②b Profiled rainscreen facing expressing the 2-storey module.

January 2013 - POST PLANNING



2a Detail of profiled rainscreen facing below windows



2b Detail of profiled rainscreen facing expressing the 2-storey module

Development of metal facings colour selection

An initial mock up of the metal panels has been constructed on site to begin the colour selection process.



Initial mock up to test colour palette

Final metal panel colour selection

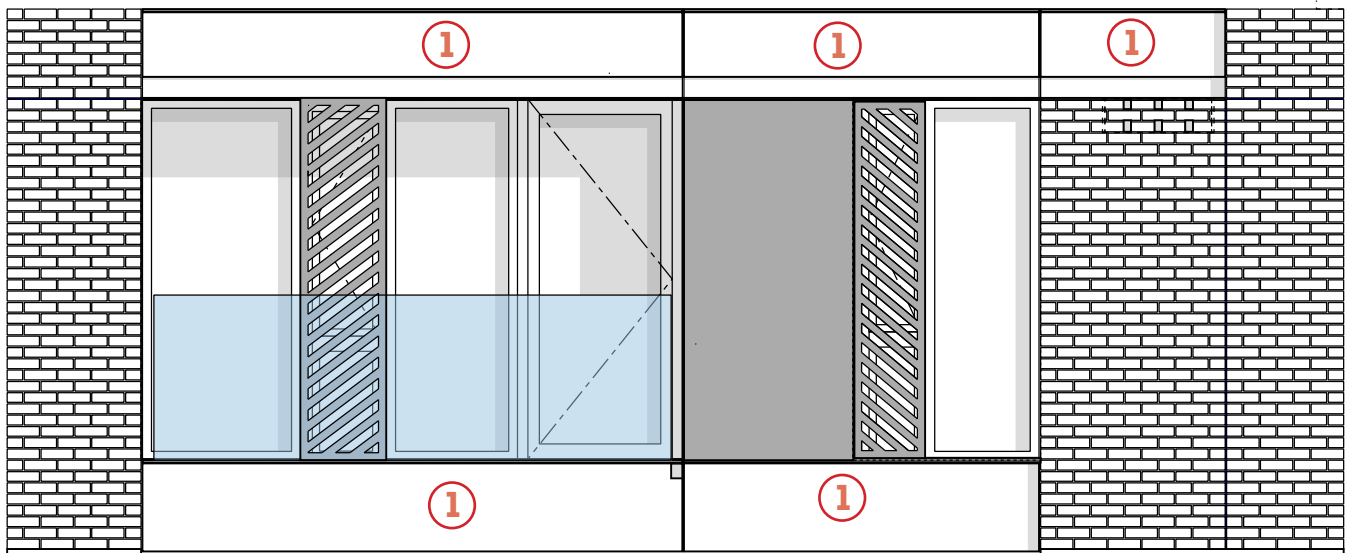
The final colour selection of the metal panel has been chosen with special consideration to the brick colour/finish and the window/ rainscreen cladding colour. We are proposing RAL no. 9006 'metallic' finish based upon the following points:

1. A balance between the window colour and the initial design intent of the horizontal banding.
2. In lieu of the original cast masonry, this finish offers some texture to the metal facing giving it a different light reflection to the matte finish of the windows.
3. Between having different metal facing profiles and a lively building footprint, this offers different light qualities to the metal facings and therefore have kept the colour similar, but not the same, to the windows /rainscreen cladding.
4. With the current brick selection, the banding was envisaged as light and distinct from the brick which has an earthy, grey colour.



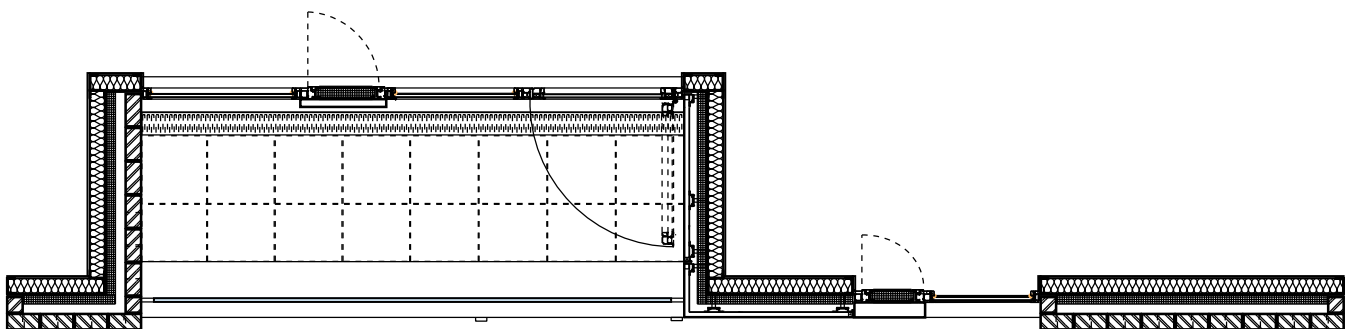
Final Mock up Panel

A final mockup displaying aspects of the facade will be constructed on site for review within the next couple of weeks including the metal facings, along side the other materials.



Elevation

① Metal Facing - RAL 9006 'metallic' finish



Plan

Drawing of proposed mockup for Review