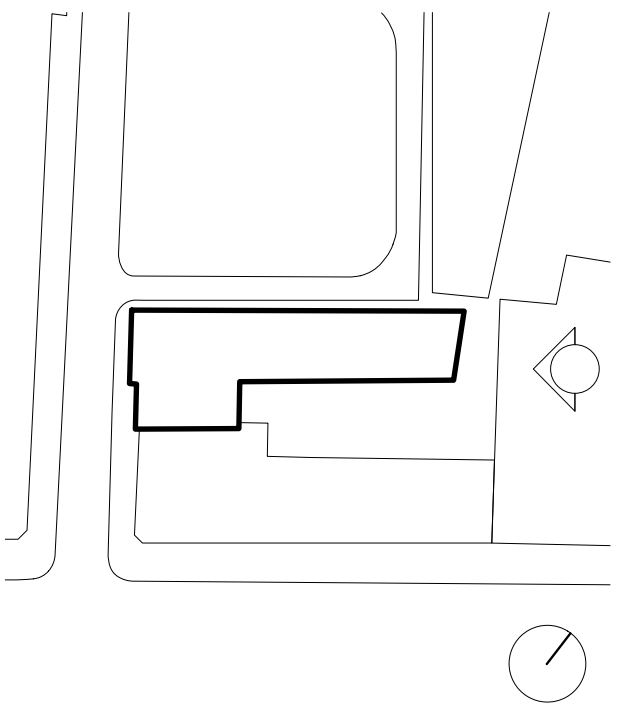


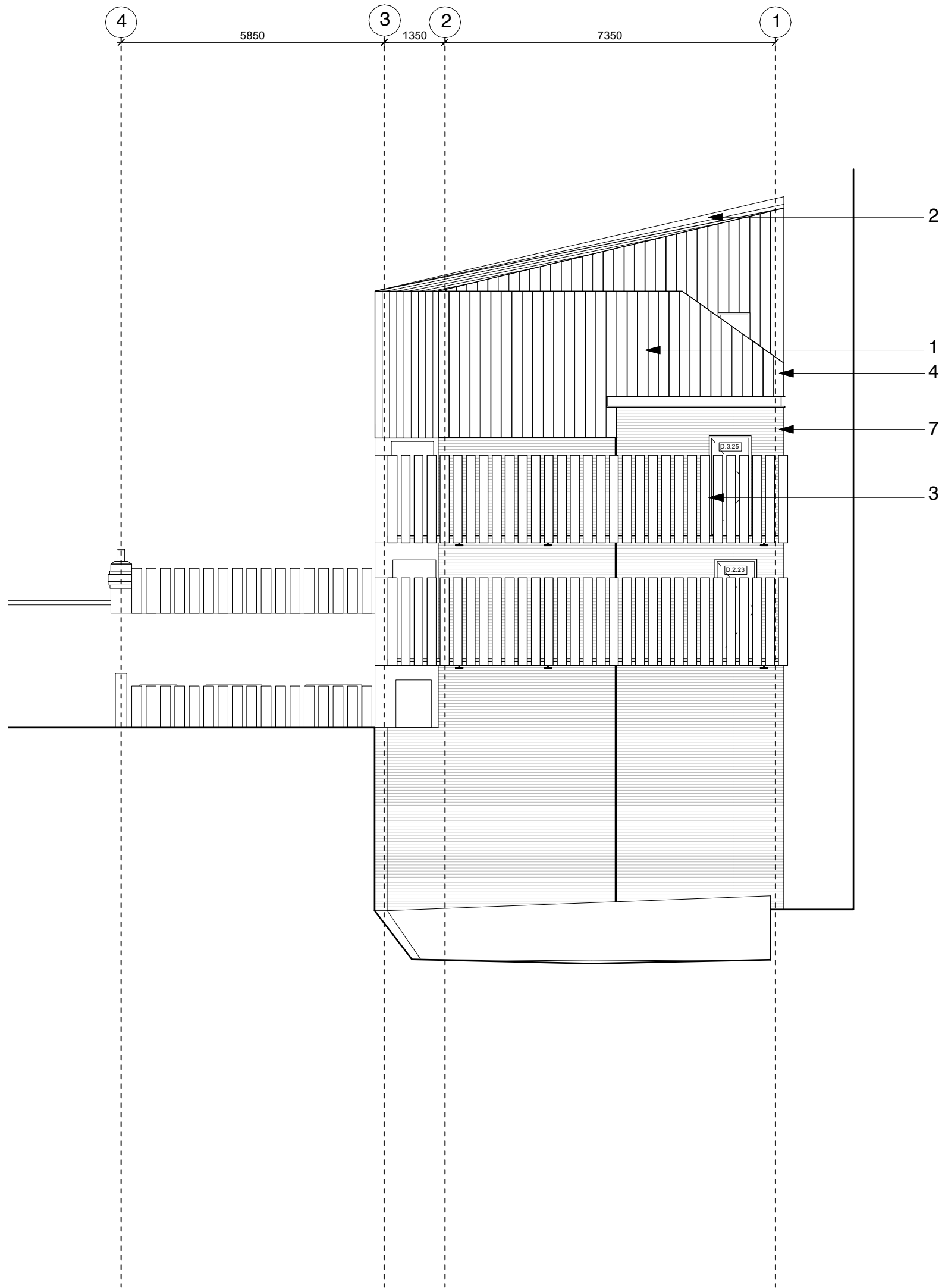
notes

Key

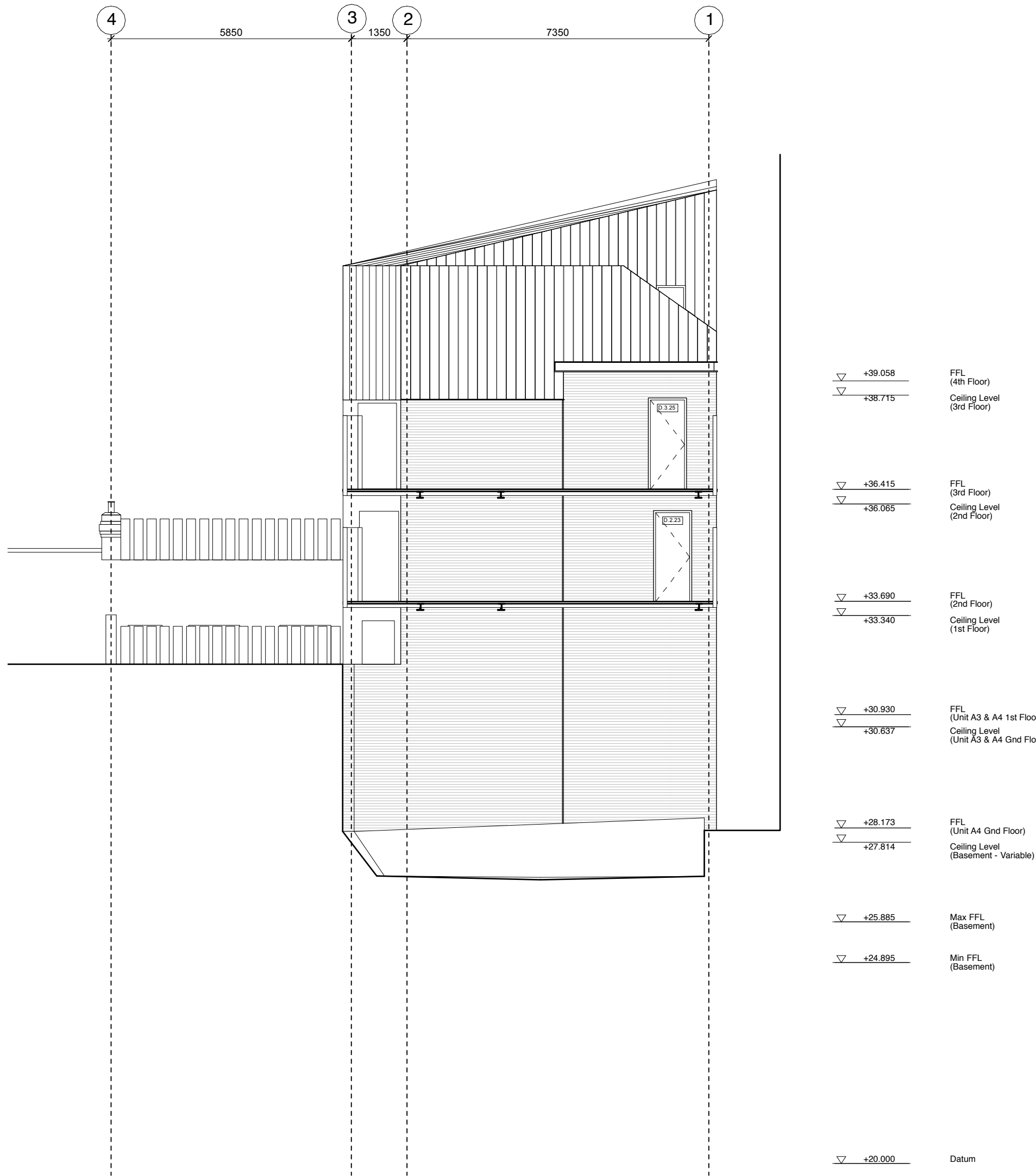


KEY:

1. Wall clad with cementitious board
2. Roof clad with cementitious board
3. Screen of louvred aluminium
4. Roof terrace
5. New aluminium window
6. New timber window in existing opening
7. Existing brickwork made good
8. Painted brickwork
9. Downpipe
10. Solar panels
11. Obscure Glazing



1 East Elevation



2 East Elevation - Section Through Walkway

▽ +39.058	FFL (6th Floor)
▽ +38.715	Ceiling Level (3rd Floor)
▽ +36.415	FFL (5th Floor)
▽ +36.065	Ceiling Level (2nd Floor)
▽ +33.690	FFL (2nd Floor)
▽ +33.340	Ceiling Level (1st Floor)
▽ +30.930	FFL (Unit A3 & A4 1st Floor)
▽ +30.637	Ceiling Level (Unit A3 & A4 Gnd Floor)
▽ +28.173	FFL (Unit A4 Gnd Floor)
▽ +27.814	Ceiling Level (Basement - Variable)
▽ +25.885	Max FFL (Basement)
▽ +24.895	Min FFL (Basement)
▽ +20.000	Datum

B	27 03 13	Issued for Planning
A	17 09 10	Issued for Planning
	24 06 09	Issued for Planning

P L A N N I N G

rev	date	comments
DSDHA 8 Iliffe Yard London SE17 3QA T 020 7703 3555 F 020 7703 3890 E info@dsdha.co.uk W www.dsdha.co.uk		
project		
Suffolk House 1-8 Whitfield Place London		
drawing title		
Proposed North East Elevations		
drawn	size	date
RS	A1/A3	20 05 09
drawing number	revision	
P155_2_12	B	
REPORT DISCREPANCIES DO NOT SCALE FROM THIS DRAWING COPYRIGHT © DSDHA		USE LATEST REVISION CHECK DIMENSIONS ON SITE