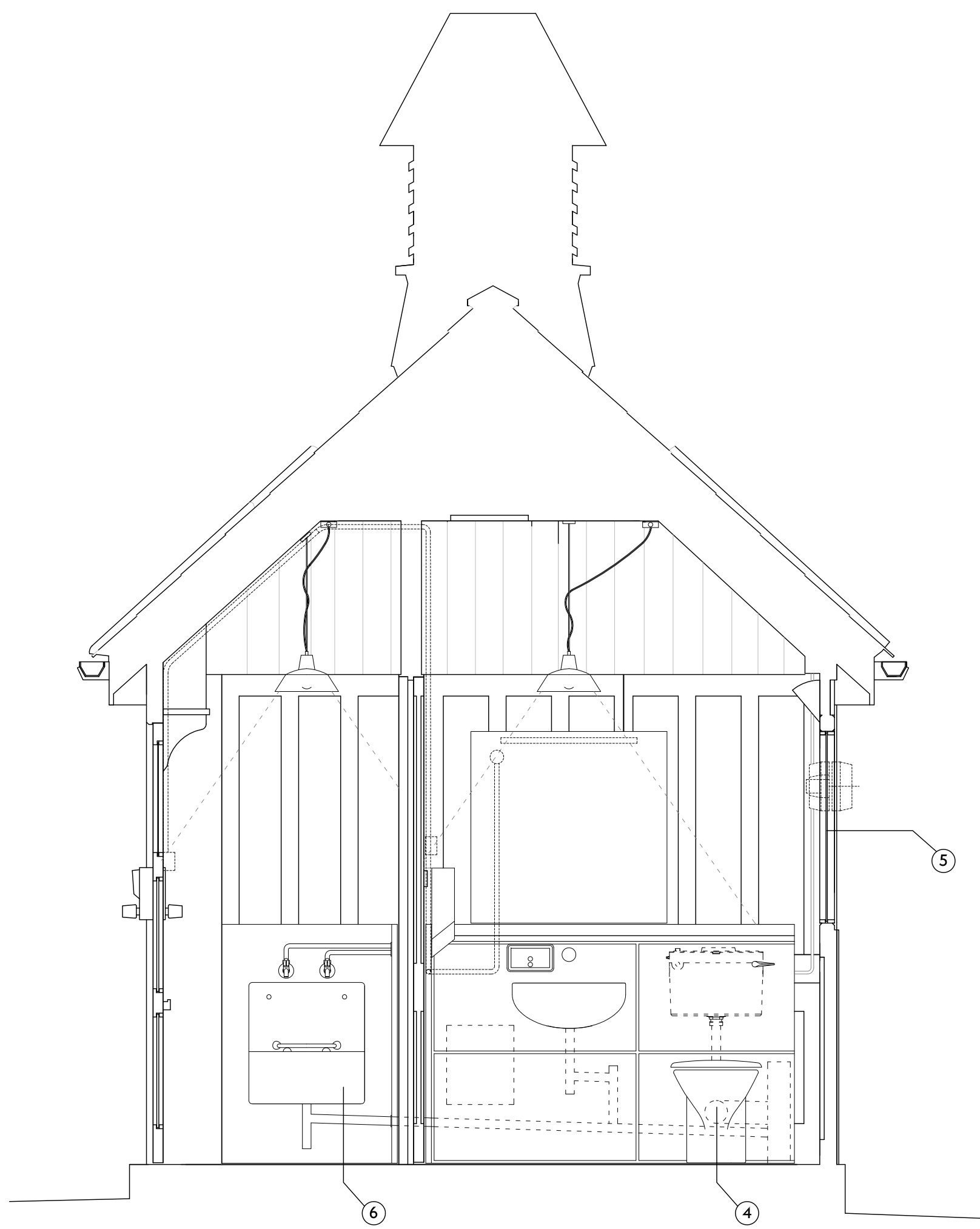




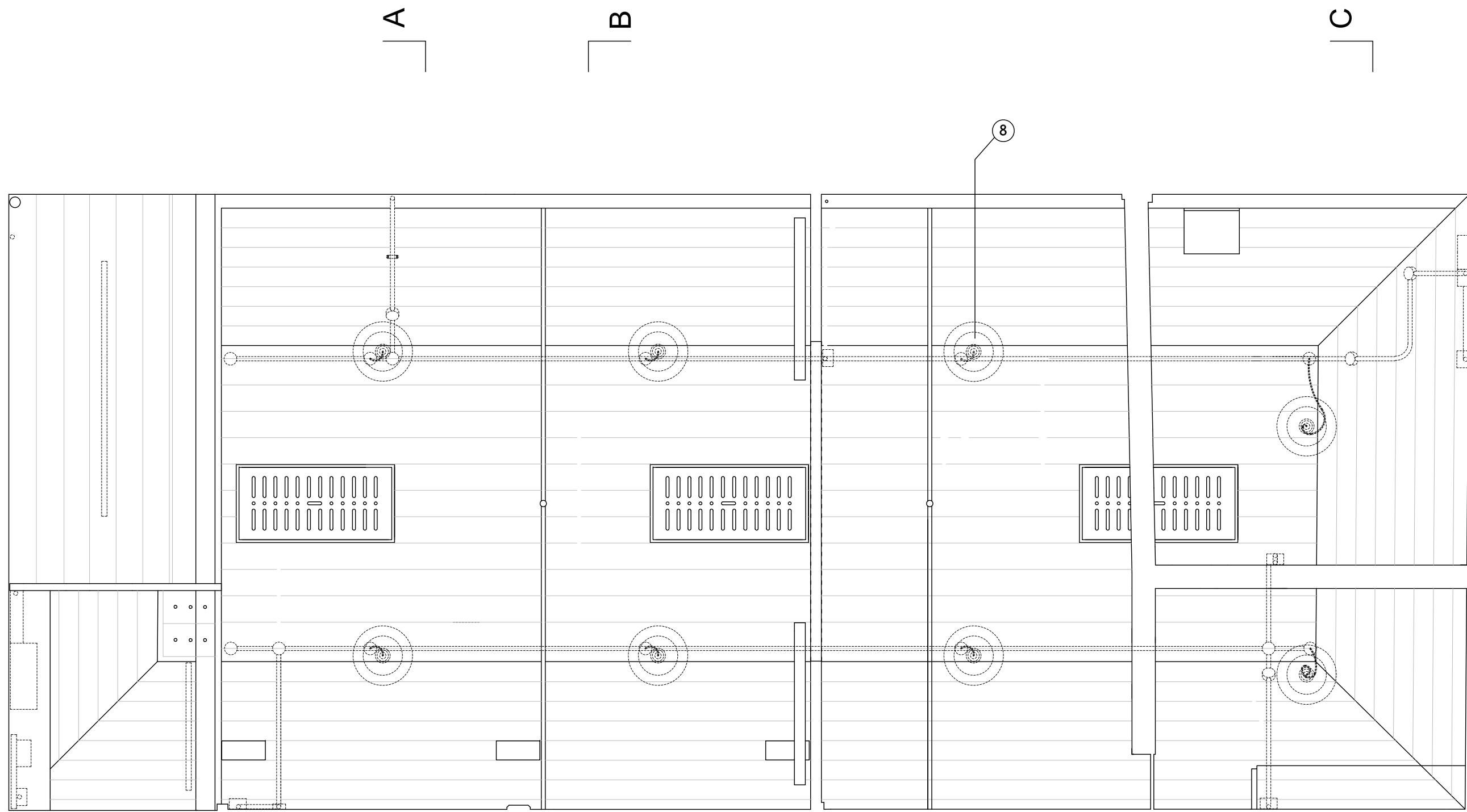
SECTION AA

SECTION BB



SECTION CC

- ① NEW OPENING FORMED IN EXISTING PARTITION BY CUTTING OUT THE MIDDLE SECTION OF TIMBER PANELLING AND REVERSE HANGING AS A PAIR OF FIXED PANELS TO THE REMAINING NIBS. DECORATED TO MATCH EXISTING.
- ② NEW FREESTANDING 3 BAY KITCHEN UNIT INCORPORATING A VENDING MACHINE, MICROWAVE OVEN AND SINK. STAINLESS STEEL TOP SURFACE AND SPLASH BACKS WITH FORMICA FACED DOOR PANELS BELOW CONCEALING THE PLUMBING AND HOT WATER BOILER .
- ④ NEW WHITE VITREOUS CHINA WC AND WHB ON FORMICA FACED UNIT CONCEALING THE PLUMBING. STAINLESS STEEL TOP AND SIDE PANEL WITH HAND DRIER. POLISHED EDGED MIRROR WALL FIXED WITH CONCEALED LIGHTING.
- ⑤ OPAQUE SECONDARY GLAZING LAYER ADDED TO PROVIDE INCREASED PRIVACY WITHIN WC.
- ⑥ NEW WHITE CERAMIC VITREOUS CHINA CLEANER'S SINK WITH STAINLESS STEEL GRATE AND WALL PROTECTION PANELS. CHROMED BRASS BIB TAPS, SURFACE MOUNTED WATER FEED AND WASTE PIPES.
- ⑧ NEW VITRIFIED ENAMEL STEEL PENDANT LAMPSHADES SUSPENDED ON SUPPORT CHAINS. ELECTRICAL FEED VIA A NEW GALVANISED SURFACE MOUNTED LIGHTING DISTRIBUTION CIRCUIT TO MATCH EXISTING.



REFLECTED CEILING PLAN



**London Buses**  
**Bus Infrastructure**  
10th Floor, Zone G3, Palestra  
197 Blackfriars Road  
London SE1 8NJ  
Telephone : 020 3054 1194

Project	HAMPSTEAD SOUTH END GREEN			
Title	PROPOSED SECTIONS & REFLECTED CEILING PLAN			
Scale @ A1	Drawn ME	Checked ABC	Authorised ABC	
1:20	Date 18/04/13	Date DD/MM/YY	Date	DD/MM/YY
Drawing No	LBSL_HSEG_01_A_D2_SE_02		Rev	-
File path	J:\HAMPSTEAD SOUTH END GREEN\2013 FEASIBILITY.dwg			