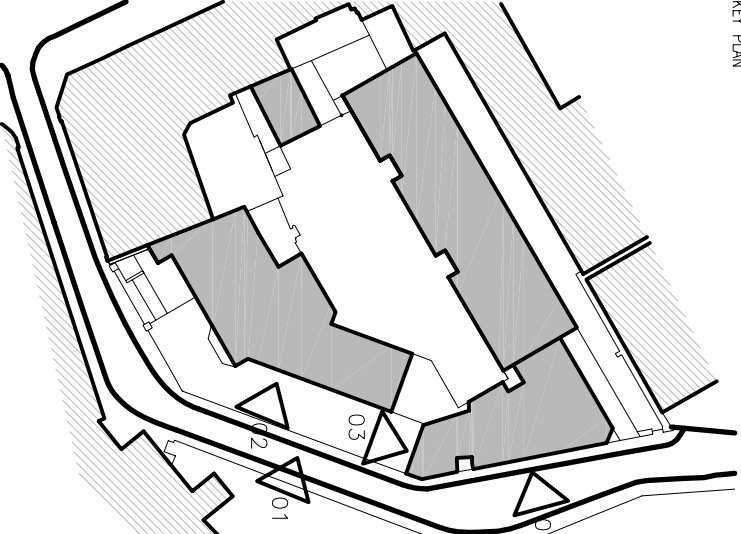


THE INFORMATION CONTAINED HEREIN IS FOR THE EXCLUSIVE USE OF THE CLIENT AND IS NOT TO BE REPRODUCED OR TRANSMITTED IN ANY FORM OR BY ANY MEANS, ELECTRONIC OR MECHANICAL, INCLUDING PHOTOCOPYING, RECORDING, OR BY ANY INFORMATION STORAGE AND RETRIEVAL SYSTEM, WITHOUT THE WRITTEN PERMISSION OF WILLMOTT DIXON.

KEY PLAN



NOTES

1. DO NOT SCALE FROM THIS DRAWING. ALL DIMENSIONS TO BE CHECKED ON SITE BY CONTRACTOR BEFORE CONSTRUCTION PROCEEDS AND PRIOR TO THE FABRICATION OF ANY COMPONENT.
2. ALL BUILDING WORKS ARE TO BE CARRIED OUT IN ACCORDANCE WITH THE RELEVANT BS EN STANDARDS, BUILDING REGULATIONS AND NBS REQUIREMENTS.
3. THE BUILDING IS TO BE CONSTRUCTED TO AN AIR TIGHTNESS OF 3 m³/m²/hr @ 50 pa.
4. MANUFACTURER'S GUIDANCE AND RECOMMENDATIONS ARE TO BE FOLLOWED FOR INSTALLATION OF ALL CONSTRUCTION COMPONENTS.
5. THE DRAWING IS TO BE READ IN CONJUNCTION WITH OTHER DRAWINGS AND SPECIFICATIONS FOR LOCATION AND IDENTIFICATION AND CONSULTANTS DRAWINGS.
6. REFER TO MAKE CONSULTANTS DRAWINGS FOR LOCATION AND NUMBER OF SERVICES. ALL DRAWINGS TO BE READ IN CONJUNCTION WITH SET DRAWINGS.

WILLMOTT DIXON		
HOUSING		
REVIEWED		
PRELIMINARY	STATUS	
FOR COMMENT	A	
FOR CONSTRUCTION	B	
SIGNED	C	
DATE		

005	10.04.13	WINDOW ANNOTATIONS AS SUBMITTED	06	PH
004	02.04.13	ADDITIONAL BRICK ANNOTATIONS ADDED	06	PH
003	28.03.13	WINDOW ANNOTATIONS TO LIFT WINDOW POSITIONS	06	PH
002	20.03.13	WINDOW ANNOTATIONS TO LIFT WINDOW POSITIONS	06	PH
001	10.02.13	MEETING CONSULTANT REVIEW	06	PH
000	01.02.13	ISSUED FOR CONSTRUCTION REVIEW	06	PH
000	13.02.13	WINDOW ANNOTATIONS TO WINDOW POSITIONS	06	PH
000	13.02.13	WINDOW ANNOTATIONS TO DETAILS AND WINDOW	06	PH
000	25.01.13	PROPOSING	06	PH
000	22.11.12	WINDOW ADJUSTMENT OF WINDOW POSITIONS	06	PH
000	12.10.12	ANALYSIS TO ACCOMMODATE COMMENTS	06	PH
000	01.06.12	DESIGN DEVELOPMENT	06	PH
REV	DATE	DESCRIPTION	06	PH
000	01.06.12	DESIGN DEVELOPMENT	06	PH
000	01.06.12	DESIGN DEVELOPMENT	06	PH

PETER BARBER ARCHITECTS
173 Kings Cross Road, London WC1X 9BZ
020 7333 4488
t: 020 7333 4488

CLIENT
WILLMOTT DIXON

PROJECT
MOUNT PLEASANT HOSTEL

52-54 MOUNT PLEASANT, LONDON

DRAWING TITLE
MOUNT PLEASANT ELEVATIONS

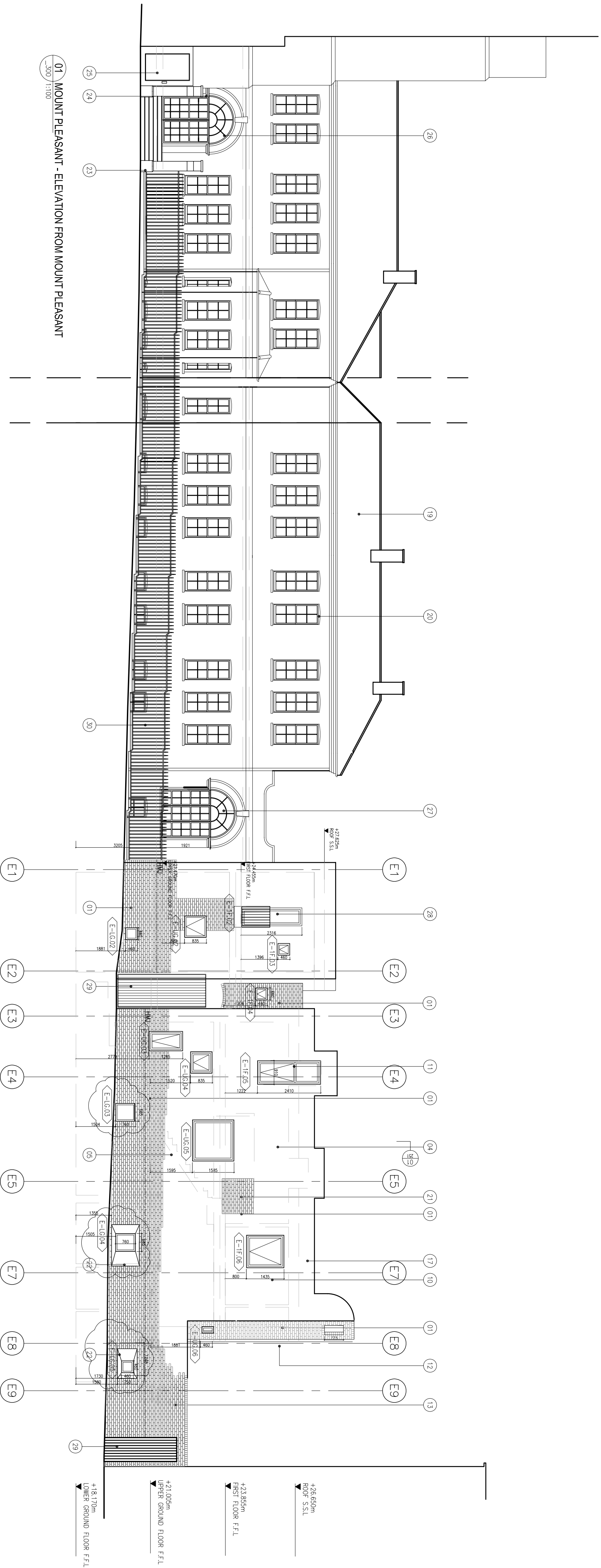
SCALE 1:100	A1 SHEET
-------------	----------

STATUS
CONSTRUCTION

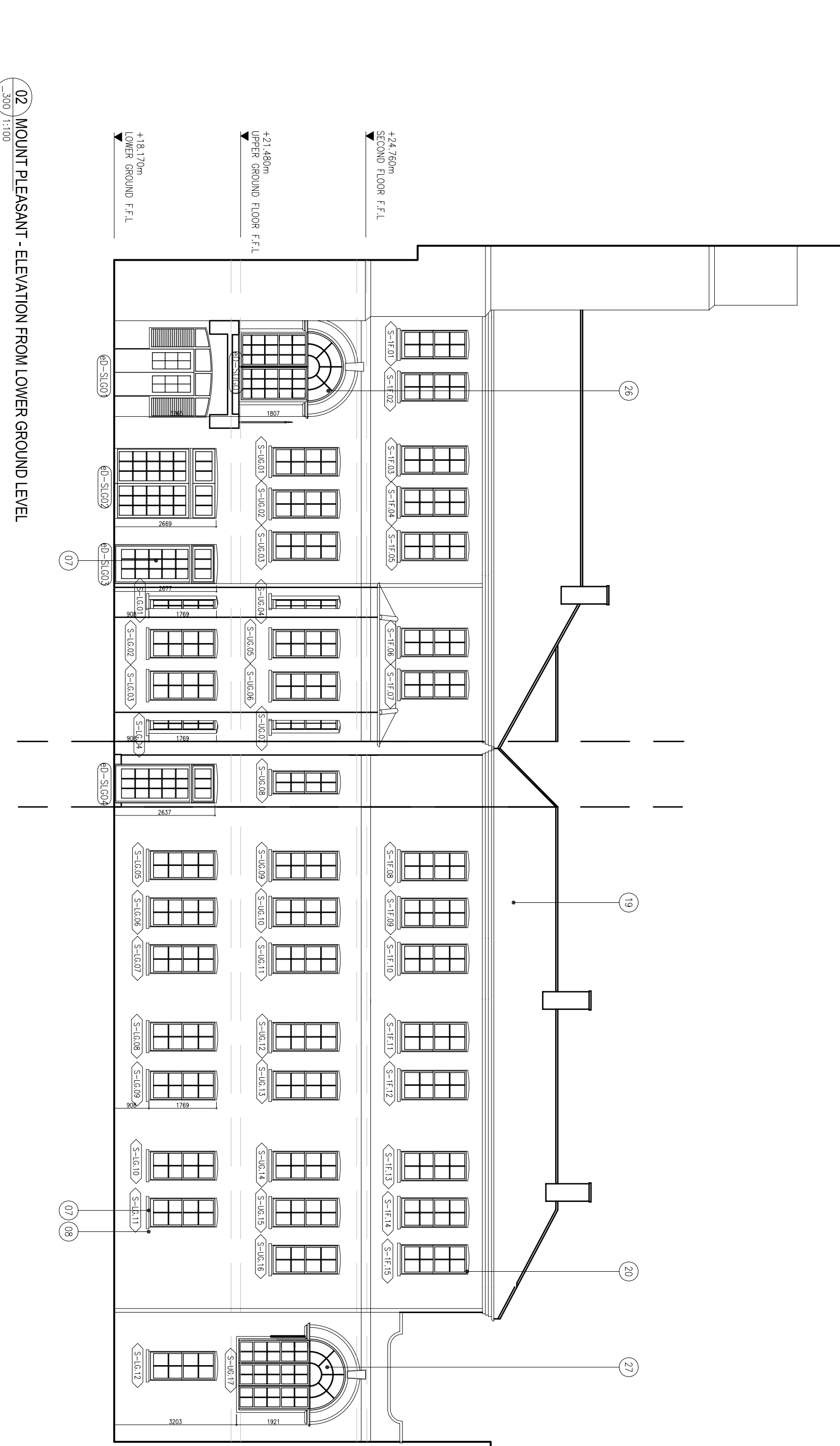
DRAWING NO 099_L_300	REV C05
-------------------------	------------

KEY

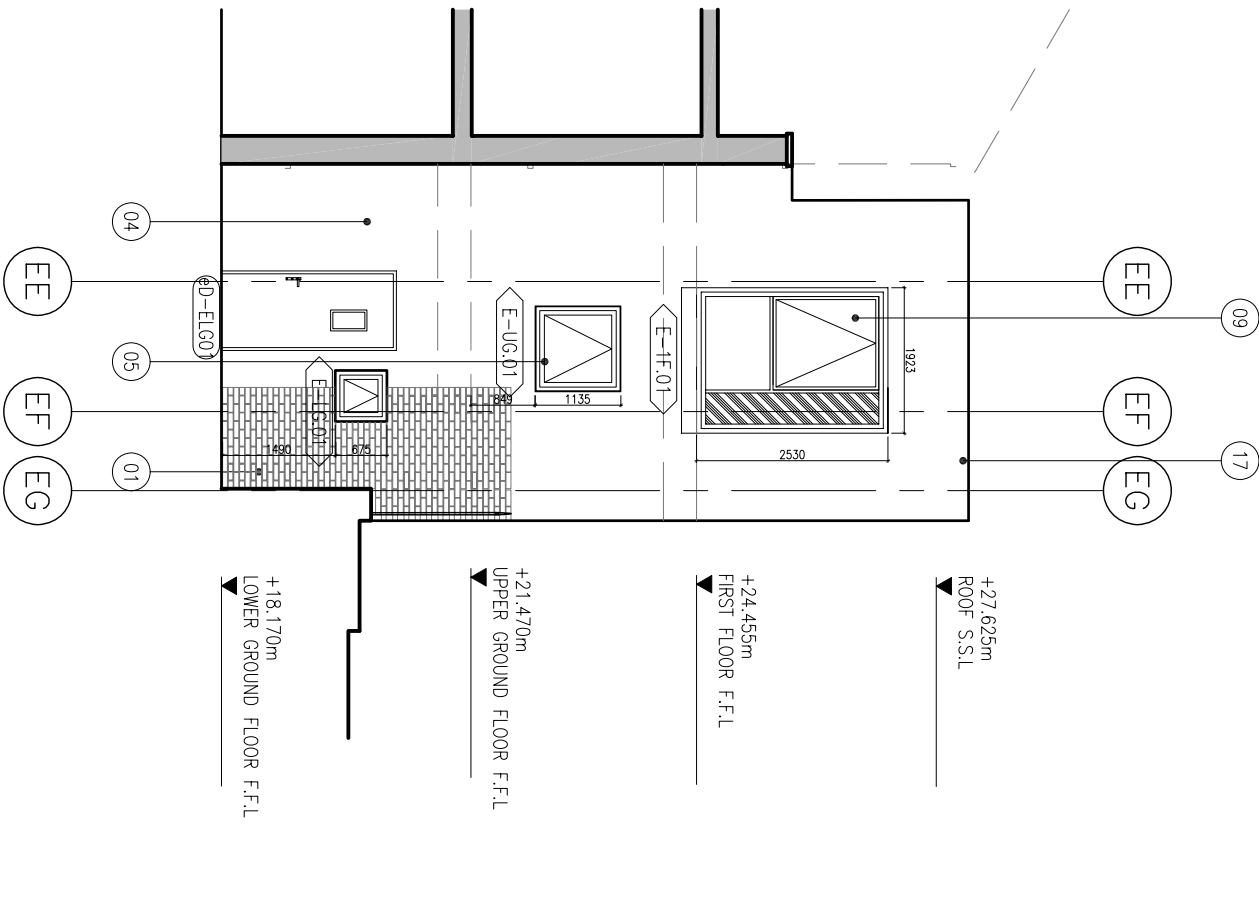
- 01 EXTERNAL BRICKWORK TYPE 1: HERFAGE YELLOW BY ROU MASSON LTD
- 02 EXTERNAL BRICKWORK TYPE 3: WEINBERGER ST WES GREY RUSTICA WITH WHITE WORKFAR
- 03 WHITE PAVEMENT COLOR RENDER SYSTEM BY WEINBERGER OR SIMILAR APPROVED. RENDER
- 04 DOUBLE GLAZED TIMBER WINDOW SYSTEM TO MATCH U VALUE 1.17W/m²K. RAL: 5003
- 05 ALU UPVC WINDOW REPLACED WITH DOUBLE GLAZED TIMBER SASH WINDOWS
- 06 NEW DOUBLE GLAZED TIMBER WINDOW/DOOR WITH SQUARE CORNER ARCH BRICK AT HEAD
- 07 NEW CONCRETE SILL TO MATCH EXISTING
- 08 BRICKWORK TO BE CLEANED TO REMOVE MORTARSPRINT AND ORGANIC DEPOSITS.
- 09 NEW DOWNER WINDOWS COAD IN LEAD
- 10 PRESSED ALUMINUM CORNIC SYSTEM POWDER COATED. PALUBE
- 11 EXISTING ROOF TO BE REPAIRED/REPLACED SUBJECT TO CONDITION SURVEY
- 12 ALL TIMBER WINDOWS REPAIRED/REPLACED SUBJECT TO CONDITION SURVEY
- 13 BRICK FEATURE PANEL
- 14 ANGLE WINDOW REVEALS IN BRICKWORK
- 15 REPAIR BRICK PERS CLEANED AND REPAIRED
- 16 REPAIR BRICK GABLE LIGHT FITTINGS WITH ASSOCIATED MURRO INTRODUCED ON PERS.
- 17 PLATFORM LIFT. ABILITY LIFTING SHED OR SIMILAR APPROVED
- 18 NEW DECORATIVE TIMBER GLAZED DOORS. SIMILAR DESIGN AS CLUSTER 20 WINDOW DESIGN
- 19 CLUSTER 20 WINDOW SILL. LOWERED WITH NEW WINDOW PANELS TO MATCH EXISTING
- 20 GALVANIZED STEEL RAILING ON PROTECTING BALCONY
- 21 GALVANIZED STEEL GATE
- 22 STEEL BALUNIS REPAIRED, STRIPPED AND REPAINTED. PALUBE
- 23 NEW DECORATIVE STEEL BALUNIS. GALVANIZED AND PAINTED TO MATCH EXISTING PAL. TEC



01 MOUNT PLEASANT - ELEVATION FROM MOUNT PLEASANT



02 MOUNT PLEASANT - ELEVATION FROM LOWER GROUND LEVEL



03 MOUNT PLEASANT - NEW EASTERN BUILDING PART ELEVATION

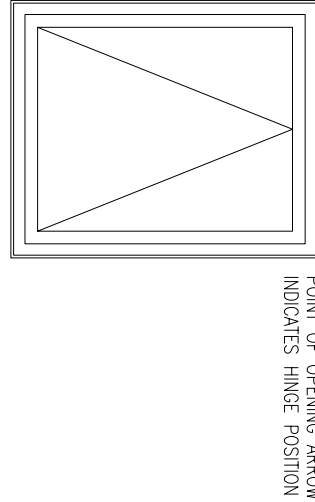


DIAGRAM OF WINDOW FRAME AND WINDOW OPENING