

Trees	Source	Age	Height	Girth	Root	Cntr	Form	ClrStem	Brks	Quantity
Betula albo-sinensis 'Fascination'	(NPS)	3x/4x	500-550cm	20-25	RB	80cm		min 200	-	3
Betula utilis 'Jacquemontii'	(NPS)	3x/4x	500-550cm	20-25	RB	80cm		min 200	-	4
Prunus avium	(NPS)	3x/4x	500-550cm	20-25	RB	80cm		min 200	-	3
Prunus serrulata 'Hokusai'	(NPS)	3x/4x	500-550cm	20-25	RB	80cm		min 200	-	2

Shrubs/Conifers	Source	Age	Height	Girth	Root	Cntr	Habit	Brks	Spacing	Quantity
Acer palmatum 'Osakazuki'	(NPS)		250-300cm		C	45L	Branched		-	2
Buxus sempervirens 'Suffruticosa'	(NPS)		40-60cm		C	10L	Bushy	6	8/m.sq	152
Cornus sanguinea 'Midwinter Fire'	(NPS)		60-80cm		C	3L	Branched	3	4/m.sq	111
x Fatshedera lizei 'Annemieke'	(NPS)		60-80cm		C	3L			6/m.sq	101
Fatsia japonica	(NPS)		60-80cm		C	10L	Leader		5/m.sq	25
Ilex aquifolium	(NPS)		60-80cm		C	10L	Leader with laterals		3/lin.m	65
Ilex aquifolium 'J C van Tol'	(NPS)		100-125cm		C	15L	Leader with laterals	5	4/lin.m	72
Juniperus horizontalis 'Bar Harbor'	(NPS)		40-60cm(D)		C	10-12L	Branched		8/m.sq	89
Photinia 'Red Robin'	(NPS)		20-30cm		C	3L	Bushy	9	4/m.sq	29
Pinus mugo 'Pumilio'	(NPS)		30-40cm		C	10-12L	Bushy		6/m.sq	55
Pyracantha 'Orange Glow'	(NPS)		40-60cm		C	4L	Bushy	3	4/m.sq	85
Sarcococca humilis	(NPS)		20-30cm		C	3L	Bushy	6	6/m.sq	279
Taxus baccata	(NPS)	4x	100-125cm		RB		Leaders		3/m.sq	82

Native shrub mix	Source	Age	Height	Girth	Root	Cntr	Form	ClrStem	Brks	Spacing	Quantity
Carpinus betulus	(NPS)	2x	150-175cm		B		Feathered		3	3/m.sq	16
Corylus avellana	(NPS)	1+2	60-80cm		B		Branched		3	3/m.sq	16
Crataegus monogyna	(NPS)	2x	125-150cm		B		Feathered			3/m.sq	16
Ilex aquifolium	(NPS)		60-80cm		C	10L	Leader & Laterals			4/m.sq	21
Taxus baccata	(NPS)		80-100cm		C	10-12L	Leaders			2/m.sq	11

Perennial Plants - General	Source	Root	Cntr	Buds	Prop	Spacing	Quantity
Epimedium x versicolor 'Sulphureum'	(NPS)	C	3-4L		V	8/m.sq	132
Polystichum setiferum	(NPS)	C	1.5-2L		S or V	8/m.sq	155
Vinca minor 'La Grave'	(NPS)	C	1.5-2L		V	6/m.sq	62

Perennial Plants - Area H1	Source	Root	Cntr	Buds	Prop	Spacing	Quantity
Crocsmia 'Lucifer'	(NPS)	C	3-4L		V	6/m.sq	18
Epimedium x versicolor 'Sulphureum'	(NPS)	C	3-4L		V	8/m.sq	24
Phormium tenax 'Veitchianum'	(NPS)	C	10L			4/m.sq	12
Sedum spectabile 'Autumn Joy'	(NPS)	C	3-4L		V	8/m.sq	24
Stipa gigantea	(NPS)	C	3-4L		S or V	6/m.sq	18

Perennial Plants - Area H2	Source	Root	Cntr	Buds	Prop	Spacing	Quantity
Helenium 'Moerheim Beauty'	(NPS)	C	1.5-2L		V	8/m.sq	16
Pennisetum alopecuroides 'Hameln'	(NPS)	C	3-4L		S or V	6/m.sq	9
Salvia nemorosa 'Caradonna'	(NPS)	C	1.5-2L		V	5/m.sq	10
Stipa tenuissima	(NPS)	C	3-4L		S or V	4/m.sq	8

Perennial Plants - Area H3	Source	Root	Cntr	Buds	Prop	Spacing	Quantity
Crocsmia 'Lucifer'	(NPS)	C	3-4L		V	6/m.sq	6
Hemerocallis fulva 'Flore Pleno'	(NPS)	C	3-4L		V	8/m.sq	8
Salvia nemorosa 'Caradonna'	(NPS)	C	1.5-2L		V	5/m.sq	10
Stipa gigantea	(NPS)	C	3-4L		S or V	6/m.sq	6

Perennial Plants - Area H4	Source	Root	Cntr	Buds	Prop	Spacing	Quantity
Crocsmia 'Lucifer'	(NPS)	C	3-4L		V	6/m.sq	12
Epimedium x versicolor 'Sulphureum'	(NPS)	C	3-4L		V	8/m.sq	16
Sedum spectabile 'Autumn Joy'	(NPS)	C	3-4L		V	8/m.sq	16
Stipa gigantea	(NPS)	C	3-4L		S or V	6/m.sq	12

Bamboos	Source	Height	Root	Cntr	Habit	Brks	Spacing	Quantity
Phyllostachys nigra	(NPS)	300cm	C	43L	Several shoots	5	2/lin.m	56

Climbers	Source	Height	Root	Cntr	Habit	Brks	Support	Quantity
Clematis armandii	(NPS)	100-150cm	C	10L	Several shoots	5	Frame	8
Hedera algeriensis 'Gloire de Marengo'	(NPS)	100-150cm	C	10L	Several shoots	5	3x Canes	6
Hedera colchica 'Dentata-Variiegata'	(NPS)	80-100cm	C	15L	Several shoots	7	3x Canes	13
Hedera helix 'Hibernica'	(NPS)	60-80cm	C	3L	Several shoots	5	Cane	5
Hedera helix 'Ivalace'	(NPS)	60-80cm	C	3L	Several shoots	4	Cane	110
Hydrangea petiolaris	(NPS)	80-100cm	C	10L	Several shoots	5	Frame	3
Lonicera henryii	(NPS)	100-150cm	C	10L	Several shoots	5	3x Canes	8
Parthenocissus quinquefolia	(NPS)	100-150cm	C	10L	Several shoots	5	3x Canes	5
Parthenocissus tricuspidata	(NPS)	100-150cm	C	10L	Several shoots	5	3x Canes	7

---

---

# Planting Proposals

April 2013

---

---

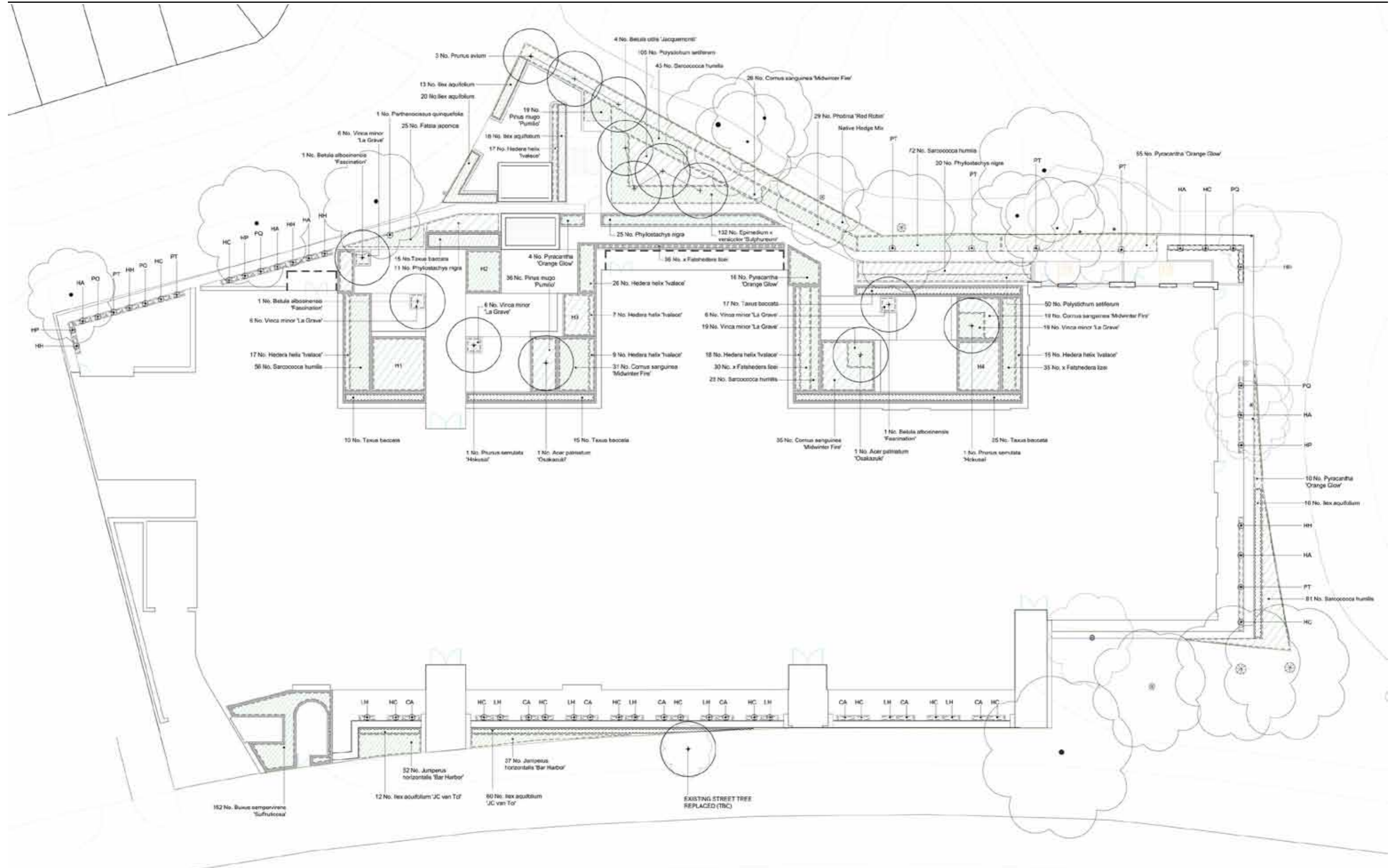
The planting proposals have been developed to deal with a number of physical and climatic issues found across the site. The key planting characteristics are:

- **Low-maintenance requirements**
- **Low-water demand/drought-tolerant species** - to deal with conditions found in planters
- **Shade-tolerant** - to deal with different locations around the building
- **Evergreens/perennials** - providing screening and 'greening' throughout the year (particularly important in relation to the rear retaining wall)
- **Plants with interest at different times of the year** - flower colour in Spring/Summer; Autumn leaf colour; bark/stem colour in Winter; scent
- **Native species where appropriate** - including Herbaceous Perennials to the Biodiverse roof, to increase the nature conservation value of the project

# Landscape Plan



# Planting Plan



## Communal Garden - Proposed Trees



Within the development site we are intending to plant a range of appropriate smaller-scale trees, to complement the surrounding mature trees, to help screen the retaining wall to the northern edge of the site and to create character within the courtyard garden spaces.

Species chosen are small-to-medium-sized trees with interest at different times of the year; the Japanese Maple and Cherry selected provide a link back to the Peace Park. The native Wild Cherry has been chosen to complement the existing Wild Cherries to the boundary of the Peace Park.



Japanese Maple *Acer palmatum* 'Osakazuki'



*Betula albo-sinensis* 'Fascination'



Japanese Cherry *Prunus serrulata* 'Hokusai'

# Communal Garden - Shrubs and Groundcovers

## Shrubs



Dogwood - *Cornus sanguinea* 'Midwinter Fire'



x *Fatshedera lizei* 'Annemieke'



Japanese Aralia - *Fatsia japonica*



*Pyracantha* 'Orange Glow'



*Phormium tenax* 'Veitchianum'



Christmas Berry *Photinia* 'Red Robin'



*Pinus mugo* 'Pumilio'



Sweet Box *Sarcococca humilis*

# Communal Garden - Shrubs and Groundcovers

## Hedges



Yew hedges - *Taxus baccata*

## Bamboo to retaining wall



Black Bamboo - *Phyllostachys nigra*



## Groundcovers



*Hedera helix* 'Ivalace'



*Polystichum setiferum*



*Vinca minor* 'La Grave'



## Communal Garden - Herbaceous Perennial plants



*Epimedium versicolor* 'Sulphureum'



*Helenium* 'Moerheim Beauty'



Mexican Feather Grass - *Stipa tenuissima*



*Stipa gigantea* and *Crocosmia* 'Lucifer'



*Hemerocallis fulva* 'Flore Pleno'



*Pennisetum alopecuroides* 'Hameln'



*Salvia nemorosa* 'Caradonna'



*Sedum spectabile* 'Autumn Joy'

## Communal Garden - Climbing and Trailing plants to Retaining Wall

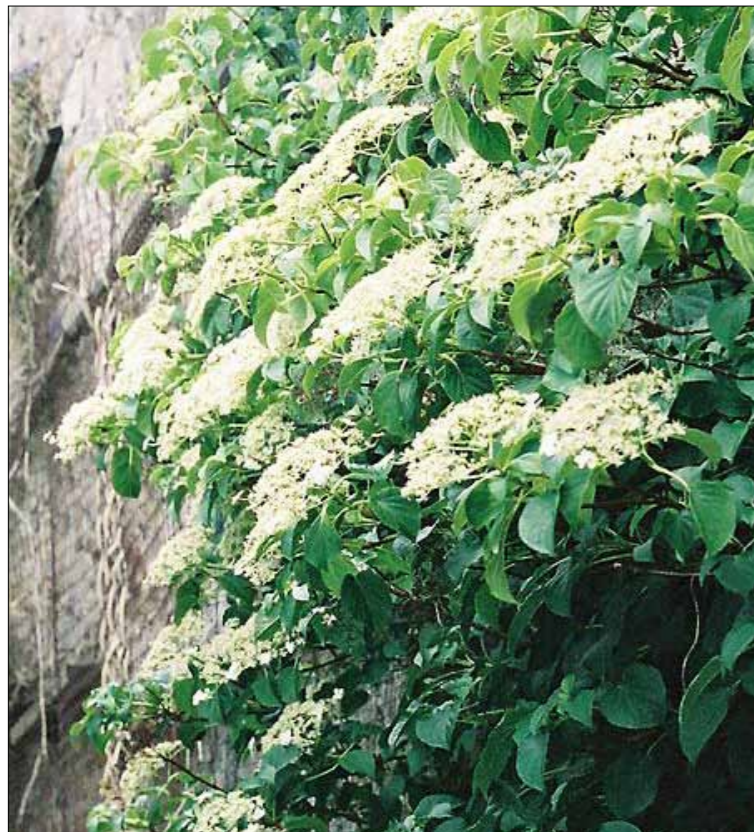


*Hedera algeriensis* 'Gloire de Marengo'



*Hedera helix* 'Hibernica'

To soften the mass and height of the retaining walls to the northern and eastern site boundaries, we are proposing to use a combination of self-clinging evergreen and deciduous climbers to cover the walls.



Virginia Creeper *Hydrangea petiolaris*



Virginia Creeper *Parthenocissus quinquefolia*



Boston Ivy *Parthenocissus tricuspidata*

# Northern boundary - Trees and Shrubs

## Trees



Wild Cherry *Prunus avium*



Himalayan Birch *Betula utilis* 'Jacquemontii'

## Groundcovers



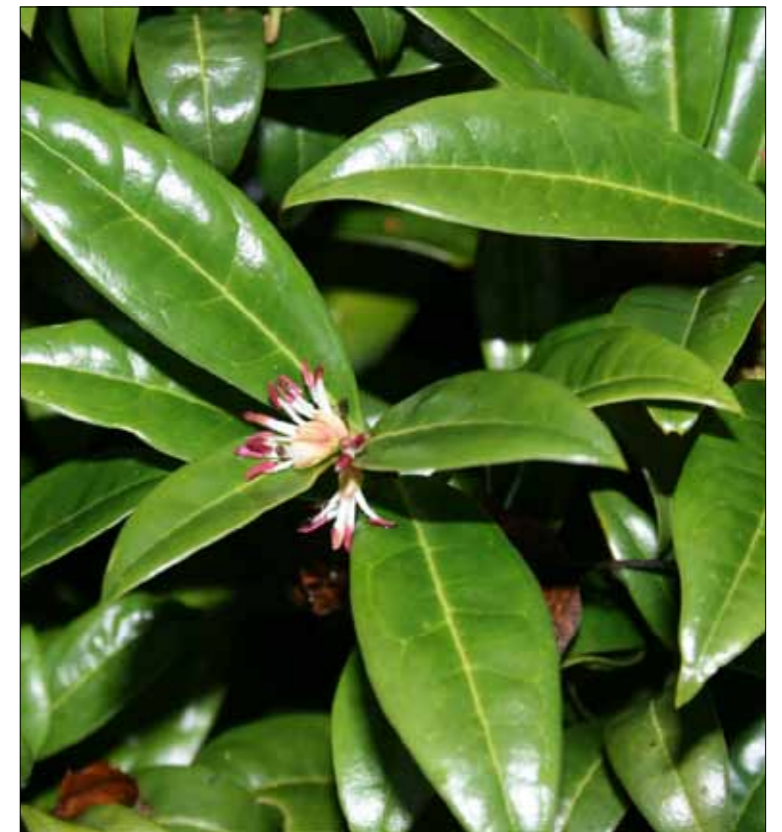
Dogwood - *Cornus sanguinea* 'Midwinter Fire'



Christmas Berry *Photinia* 'Red Robin'



*Pyracantha* 'Orange Glow'



Sweet Box *Sarcococca humilis*

## Northern boundary - Native hedge to boundary and Groundcovers

### Native hedge shrubs



Hornbeam - *Carpinus betulus*



Hazel - *Corylus avellana*



Hawthorn - *Crataegus monogyna*



Holly - *Ilex aquifolium*



Yew - *Taxus baccata*

### Groundcovers



*Epimedium versicolor* 'Sulphureum'



*Polystichum setiferum*

## Front Gardens - Climbing plants



Evergreen Clematis *Clematis arandii*



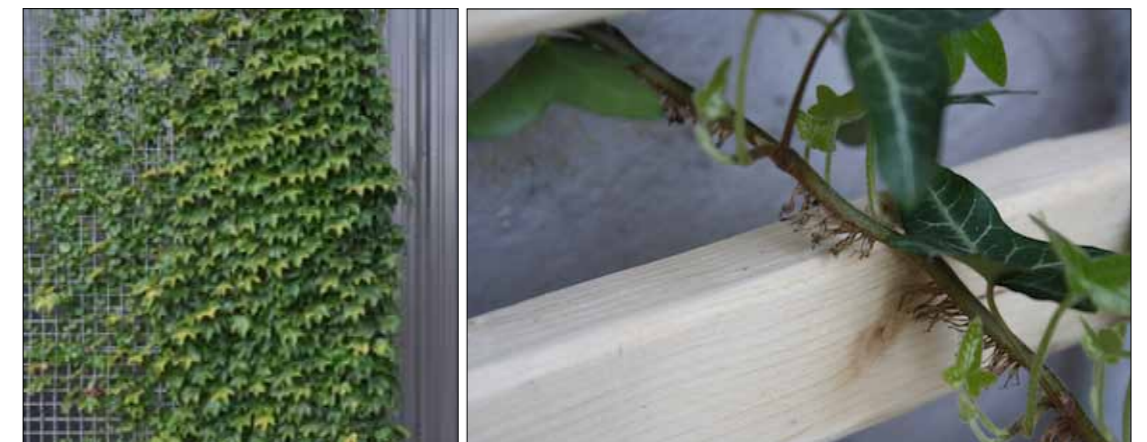
*Hedera colchica* 'Dentata Variegata'



Honeysuckle *Lonicera henryi*

The Front Gardens are at basement level, and as such are sunken spaces with access directly from bedrooms.

To soften and screen the boundary retaining wall, we are proposing a series of raised metal-clad planters (600mm height) containing shade-tolerant climbing species with evergreen foliage. The Evergreen Clematis and Honeysuckle both have scented flowers. The climbers are to be grown over a timber trellis, attached to the retaining wall.



# Maygrove Road frontage

## Hedges



Holly *Ilex aquifolium* 'J C van Tol'

The planting frontage along Maygrove Road is designed to have structure and provide a setting for the development.

The backdrop is an evergreen Holly hedge with a low carpet of evergreen Juniper. The area around the escape stairwell is Box, clipped to form a dense green enclosure.

## Shrubs



Box - *Buxus sempervirens* 'Suffruticosa'

## Groundcovers



*Juniperus horizontalis* 'Bar Harbor'

## Roofscapes - Biodiverse Roof



The Biodiverse Roof will comprise mounded substrate/growing medium between 80mm-150mm depth and will be supplemented with a wildflower seed mix to aid natural colonization.

To facilitate rapid establishment and promote a more predictable mix of species of biodiversity benefit there will be areas of plug planting of wildflower species within the overall Wildflower seed mix. The species mix has been carefully chosen to optimise biodiversity across the roof spaces, to suit the substrate utilised, and importantly, to tolerate the drought and wind exposed conditions prevalent at the different roof levels.

A selection of proposed species are illustrated; a full list of species is included in the Greengage report 'Bio-diverse Roof Spec for Maygrove Road'. The proposed species are commonly found on industrial, wasteland and brownfield sites in this region.



Agrimony - *Agrimonia eupatoria*



Corncockle - *Agrostemma githago*



Bugle - *Ajuga reptans*



Cornflower - *Centaurea cyanus*



Mouse-ear Chickweed - *Cerastium fontanum*



Viper's Bugloss - *Echium vulgare*

## Roofscapes - Biodiverse Roof



Ox-Eye Daisy - *Leucanthemum vulgare*



Bird's Foot Trefoil - *Lotus corniculatus*



Field Forget-Me-Not - *Myosotis arvensis*



Common Poppy - *Papaver rhoeas*



Cowslip - *Primula veris*



Bladder Campion - *Silene vulgaris*



Bladder Campion - *Thymus serpyllum*



Persian Speedwell - *Veronica persica*



Common Vetch - *Vicia sativa*