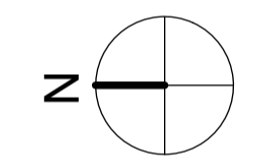


This drawing has been prepared for Planning purposes only and should not be used for construction purposes.

All figured dimensions are in millimetres

**Key**

- Existing light fittings to be removed
- 1 Proposed reception desk below
- 2 Proposed continuous recessed linear downlights to replace existing low voltage spot lights
- 3 Proposed flush mounted LED downlights



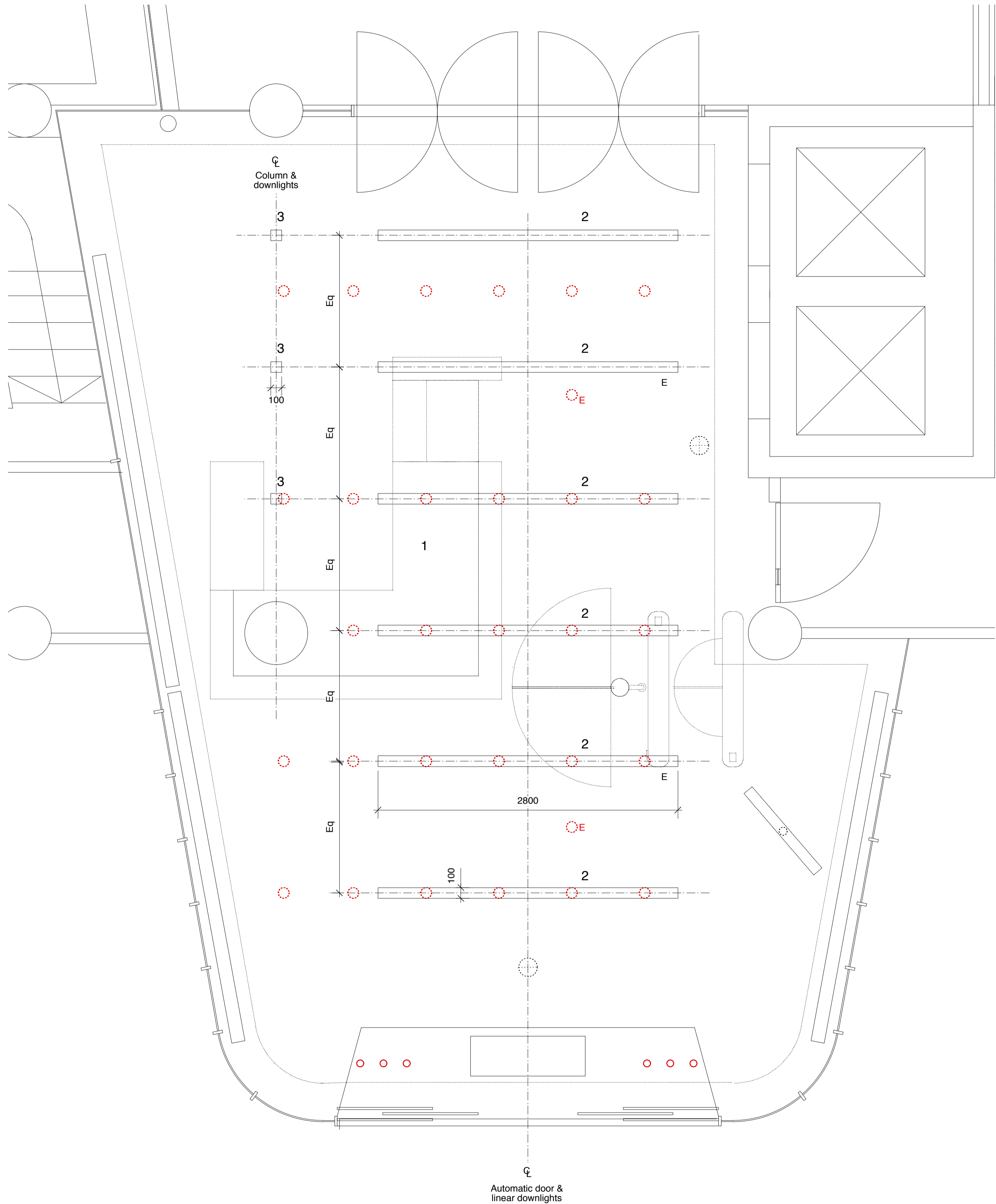
0 1.25m

Rev	Description	Drawn	Date
P	Planning	OP	08.05.13

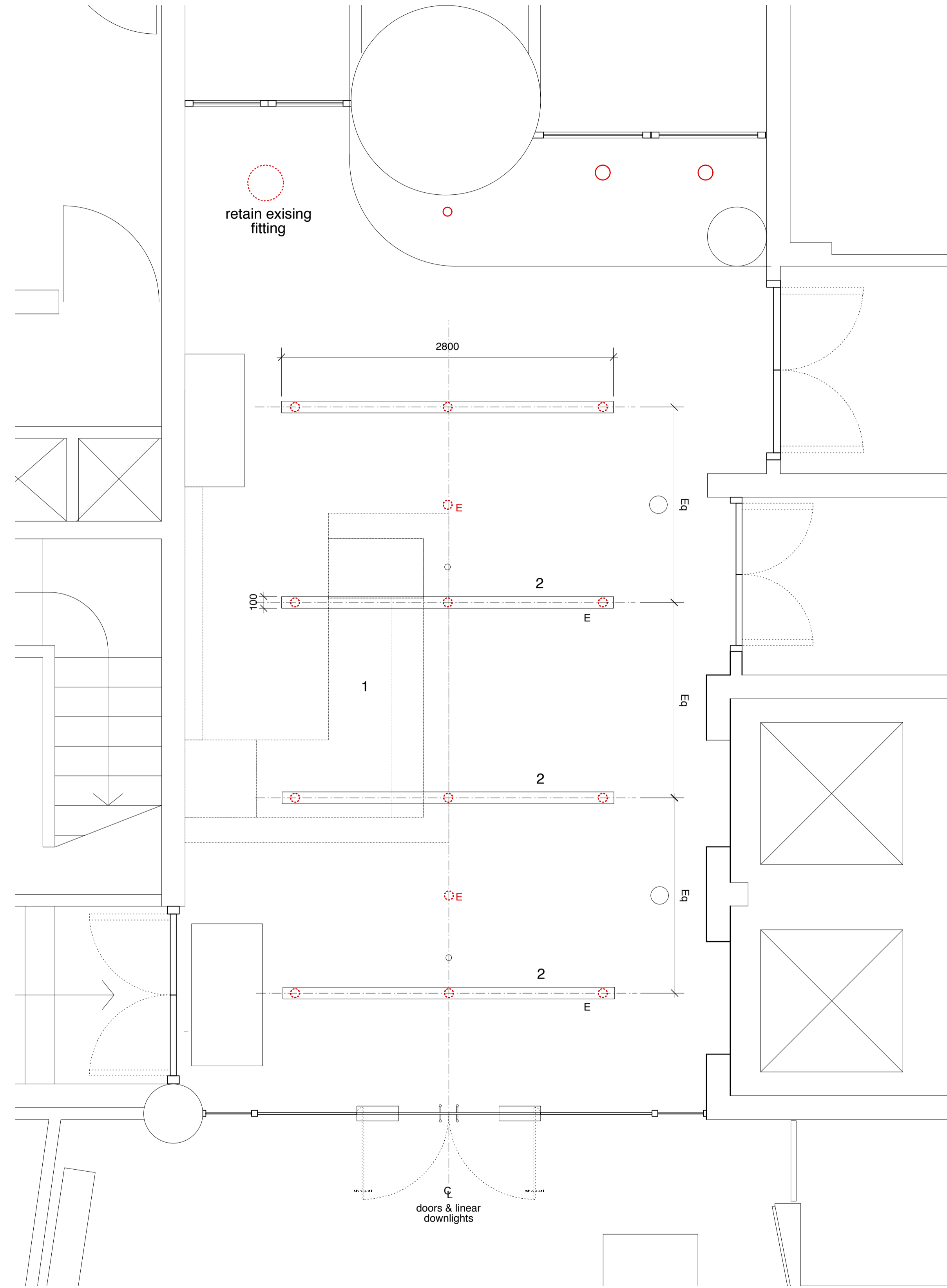
Trades Union Congress  
**Congress House Refurbishment**  
 Reflected Ceiling Reception Plans  
 Status: Planning  
 Scale 1:25@A1, 1:50@A3  
 May 2013

Draw N° 186_P_14	Rev P
Drawn by EW	Authorised by AK Size A1

**HUGHBROUGHTONARCHITECTS**  
 41a Beavor Lane London W6 9BL  
 T 020 8735 9959 F 020 8563 3891 E info@hbarchitects.co.uk  
 © Hugh Broughton Architects Ltd



MAIN RECEPTION REFLECTED CEILING PLAN 1:25



REAR RECEPTION REFLECTED CEILING PLAN 1:25