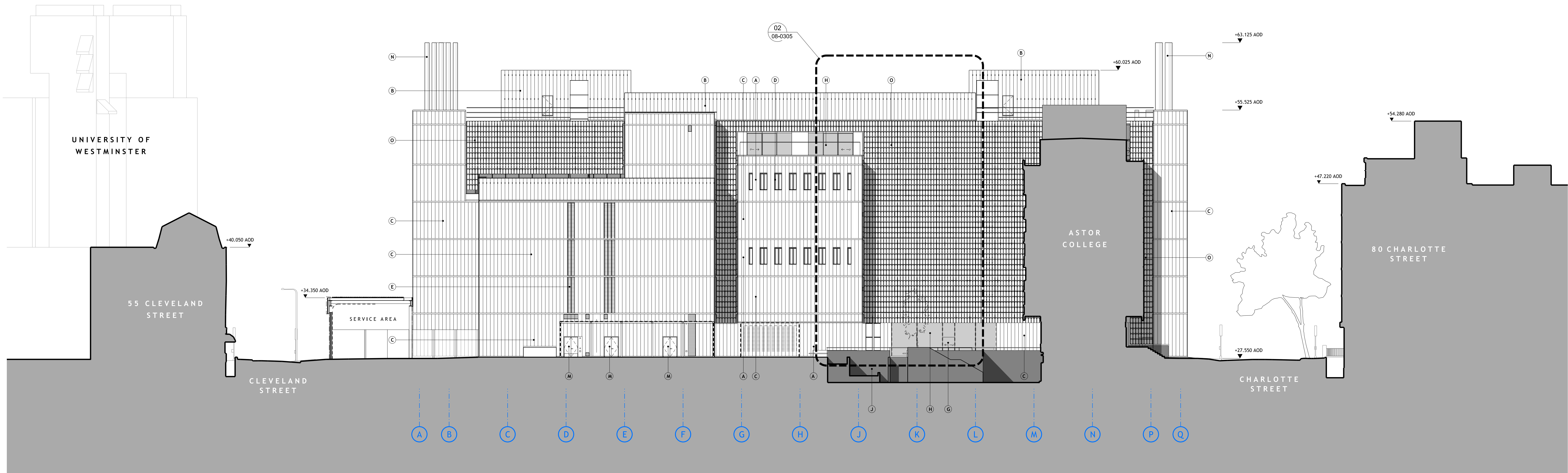


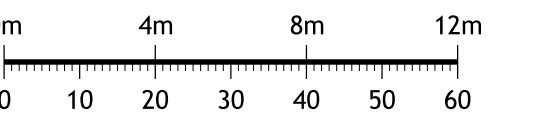
1 PROPOSED NORTH ELEVATION - HOWLAND STREET / NEW CAVENDISH STREET



2 PROPOSED SOUTH ELEVATION - SECTION THROUGH SITE

DO NOT SCALE

THIS DRAWING IS © IAN RITCHIE ARCHITECTS LTD
Dimensions to be verified on site.
Figured dimensions to take preference to those scaled.
All discrepancies to be clarified with the project architect.
Unless otherwise stated all levels to be AOD.
This drawing is the property of Ian Ritchie Architects Ltd and is
issued on the condition it is not reproduced, rescaled or
copied in any form without written consent.



LEGEND:

- (A) ENAMELLED LOW-IRON CAST GLASS WITH TRANSLUCENT INSULATION
- (B) ENAMELLED LOW-IRON CAST GLASS
- (C) ENAMELLED LOW-IRON CAST GLASS WITH OPAQUE INSULATION
- (D) GLAZED WINDOW WITH ENAMELLED GLASS LOUVRES
- (E) VENT FOR AIR INTAKE / EXTRACT WITH ENAMELLED GLASS LOUVRES
- (F) DOOR WITH ENAMELLED GLASS FRONTAGE TO MATCH SURROUNDING CAST GLASS
- (G) CLEAR GLAZED SLIDING DOOR
- (H) FIXED CLEAR GLAZING
- (I) REVOLVING DOOR
- (J) VISUAL CONCRETE
- (K) WHITE VISUAL CONCRETE COLUMNS
- (L) GALVANISED MESH SCREEN TO GENERATOR AREA
- (M) WHITE POWDERCOATED DOOR
- (N) WHITE METAL FLUES
- (O) TRANSLUCENT SUSPENDED LAMELLA SCREEN
- (P) FIXED CLEAR GLAZING (VITRINE ART DISPLAY)
- (Q) WHITE LOUVRE DOOR TO UKPN ROOM
- (R) WHITE DRY RISER INLET BOX SET INTO ENAMELLED LOW-IRON CAST GLASS
- (S) CLEAR GLAZING WITH FIXED/SLIDING PANELS AND TRANSLUCENT GLAZED OVERPANEL
- (T) CLEAR GLAZED DOOR WITH TRANSLUCENT OVERPANEL

C	28.03.13	JB	AS	GT	Elevation 1 Level of mesh screen added. Shading corrected. Further material cross references added.
B	01.02.13	KS	AS	GT	Legends updated. Cast glass amended to achieve desired effect as sandblasting. Louvre sizes amended. Door, positions and heights amended. Ground floor fenestration amended. Lvl 5 fenestration amended. Horizontal cladding added.
A	28.02.12	KS	LSM	GT	Plant screen heights amended on north and south elevations
Rev	Date	By	Cd	App	Description

Job Title
UCL Howland Street Site

Drawing Title
**ELEVATIONS
NORTH & SOUTH
PROPOSED**

© IAN RITCHIE ARCHITECTS LTD
110 Three Colt Street London E14 8AZ
Tel: 020 7338 1100 Fax: 020 7338 1199

Status	PLANNING	Date	16.03.11
Scale	1:200@A0	Drawn	KS
Checked	LSM	Approved	GT
Job No	608	Drawing No	IRAL-08-0205
Rev	C		